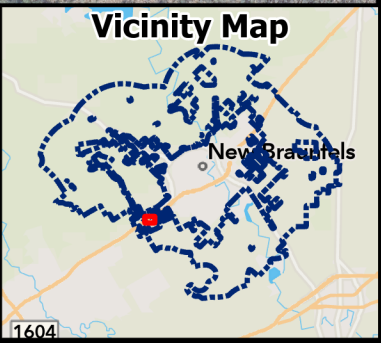


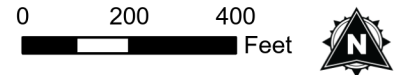
Aerial Exhibit



 Subject Property



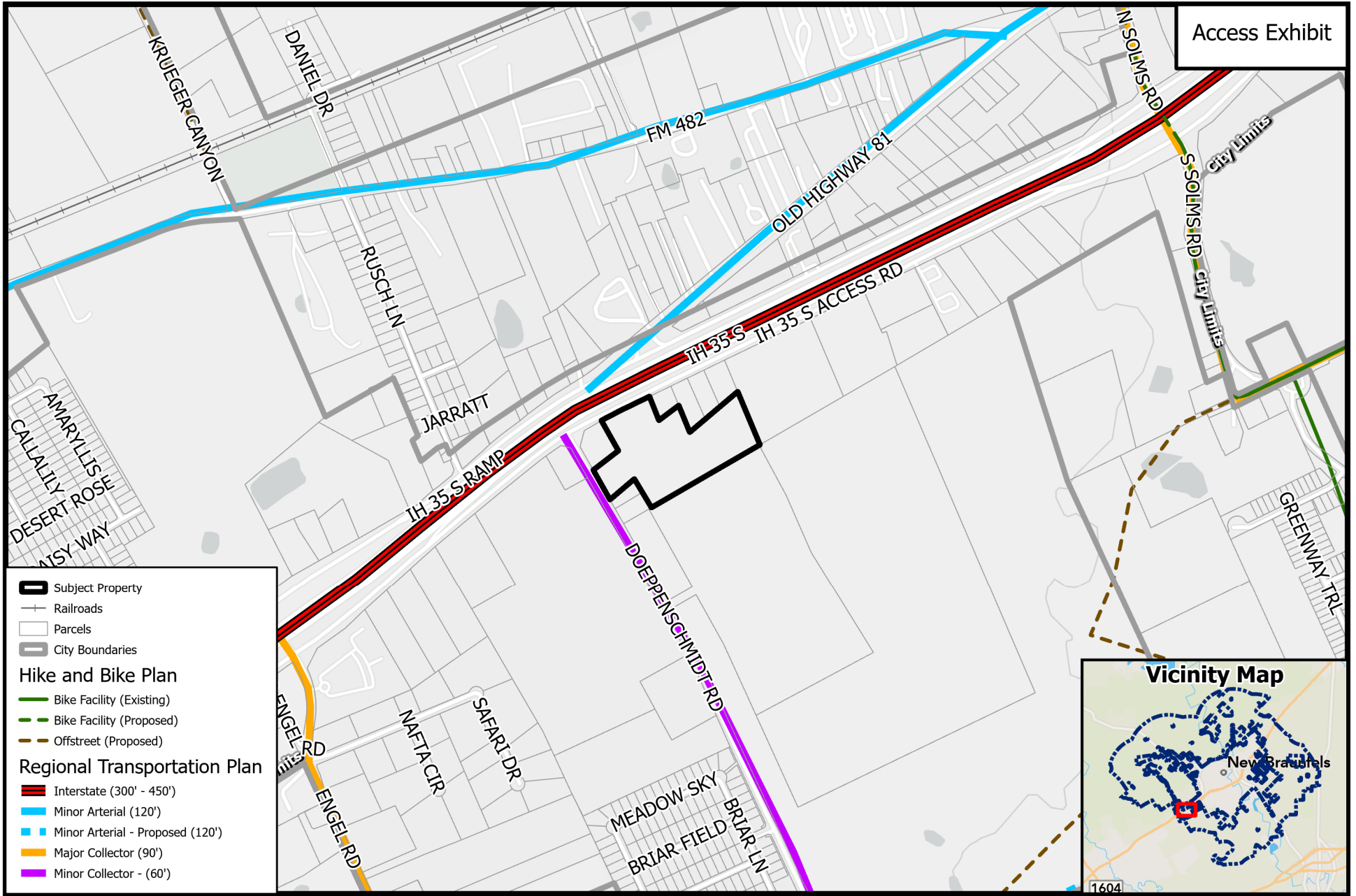
PZ24-0327
APD & M-1 to M-1A
5309 IH 35 S



Path: P:\ZoneChange & SUPs\2024\PZ24-0327 - 5309 IH 35 S - APD & M-1 to

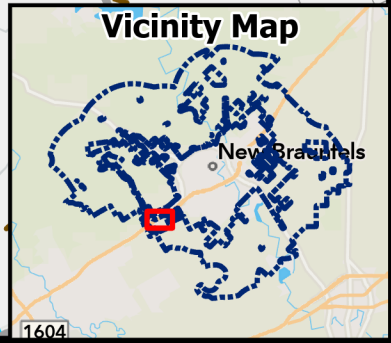
Source: City of New Braunfels Planning
Date: 10/14/2024

DISCLAIMER: This map and information contained in it were developed exclusively for use by the City of New Braunfels. Any use or reliance on this map by anyone else is at that party's risk and without liability to the City of New Braunfels, its officials or employees for any discrepancies, errors, or variances which may exist.



Access Exhibit

- Subject Property
 - Railroads
 - Parcels
 - City Boundaries
- Hike and Bike Plan**
- Bike Facility (Existing)
 - Bike Facility (Proposed)
 - Offstreet (Proposed)
- Regional Transportation Plan**
- Interstate (300' - 450')
 - Minor Arterial (120')
 - Minor Arterial - Proposed (120')
 - Major Collector (90')
 - Minor Collector - (60')



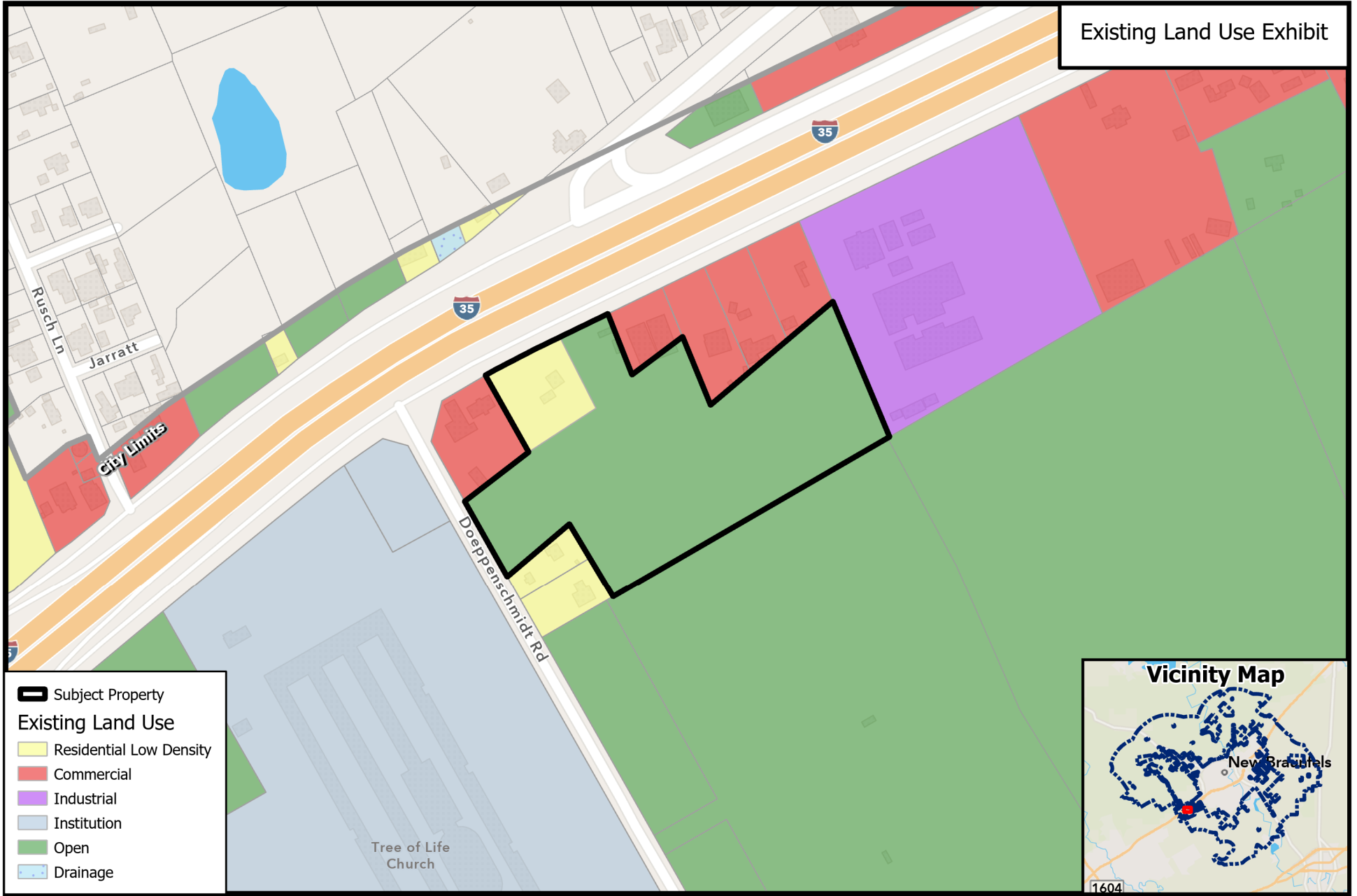
PZ24-0327
APD & M-1 to M-1A
5309 IH 35 S



Path: P:\ZoneChange & SUPs\2024\PZ24-0327 - 5309 IH 35 S - APD & M-1 to

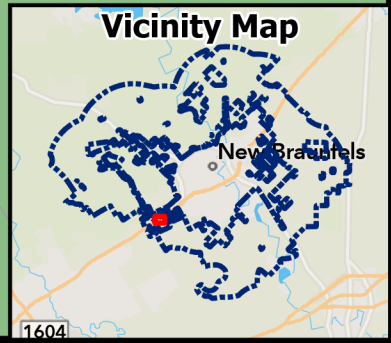
Source: City of New Braunfels Planning
 Date: 10/14/2024

DISCLAIMER: This map and information contained in it were developed exclusively for use by the City of New Braunfels. Any use or reliance on this map by anyone else is at that party's risk and without liability to the City of New Braunfels, its officials or employees for any discrepancies, errors, or variances which may exist.

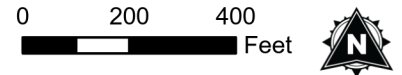


Existing Land Use Exhibit

-  Subject Property
- Existing Land Use**
-  Residential Low Density
-  Commercial
-  Industrial
-  Institution
-  Open
-  Drainage



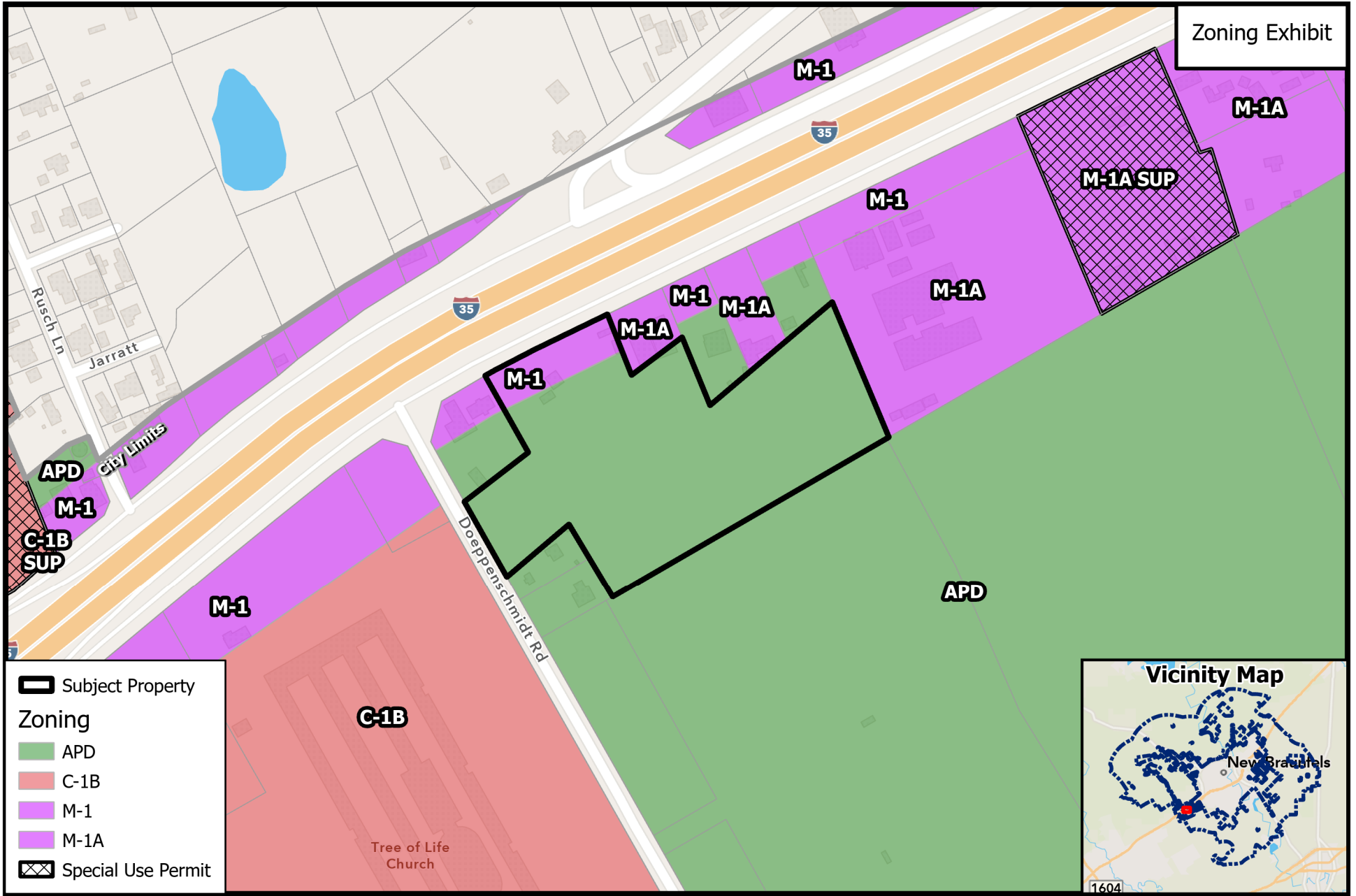
PZ24-0327
APD & M-1 to M-1A
5309 IH 35 S



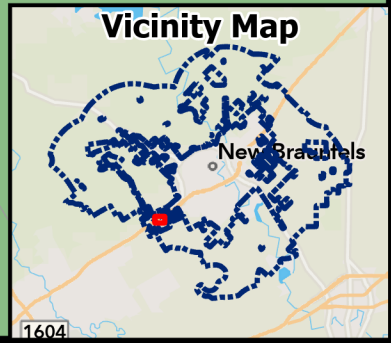
Path: P:\ZoneChange & SUPs\2024\PZ24-0327 - 5309 IH 35 S - APD & M-1 to

Source: City of New Braunfels Planning
 Date: 10/14/2024

DISCLAIMER: This map and information contained in it were developed exclusively for use by the City of New Braunfels. Any use or reliance on this map by anyone else is at that party's risk and without liability to the City of New Braunfels, its officials or employees for any discrepancies, errors, or variances which may exist.



- Subject Property
- Zoning**
- APD
- C-1B
- M-1
- M-1A
- Special Use Permit



PZ24-0327
APD & M-1 to M-1A
5309 IH 35 S

