

Aerial Exhibit



Subject Property

Vicinity Map

New Braunfels

1604



**PZ23-0480**  
**R-2 AH to M-1 AH**

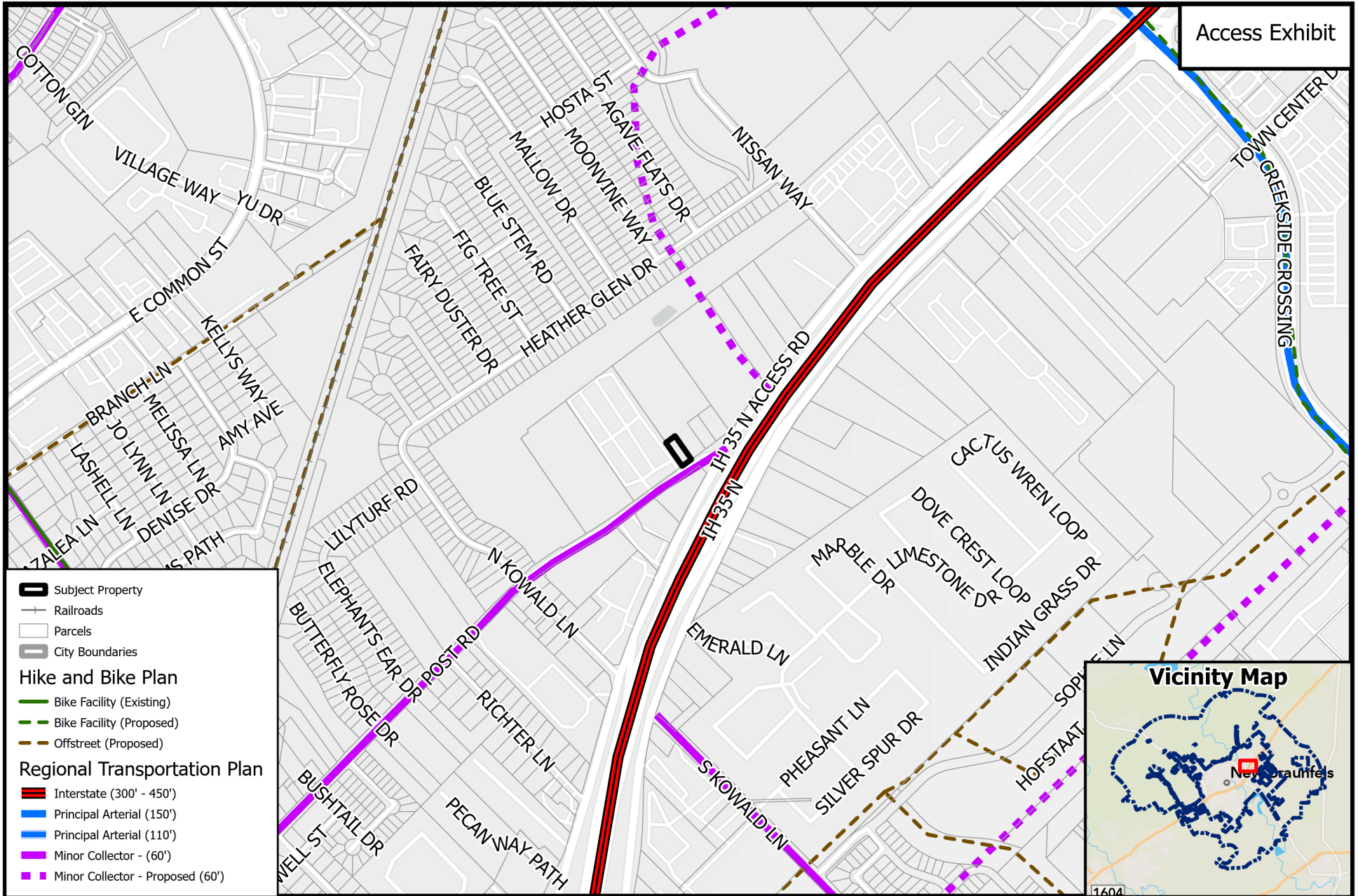
0 100 200 Feet

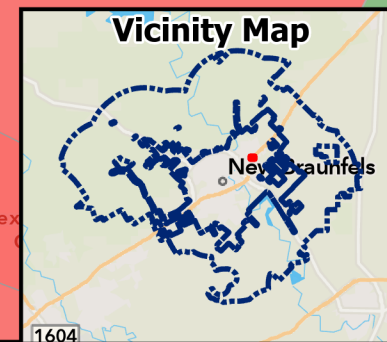
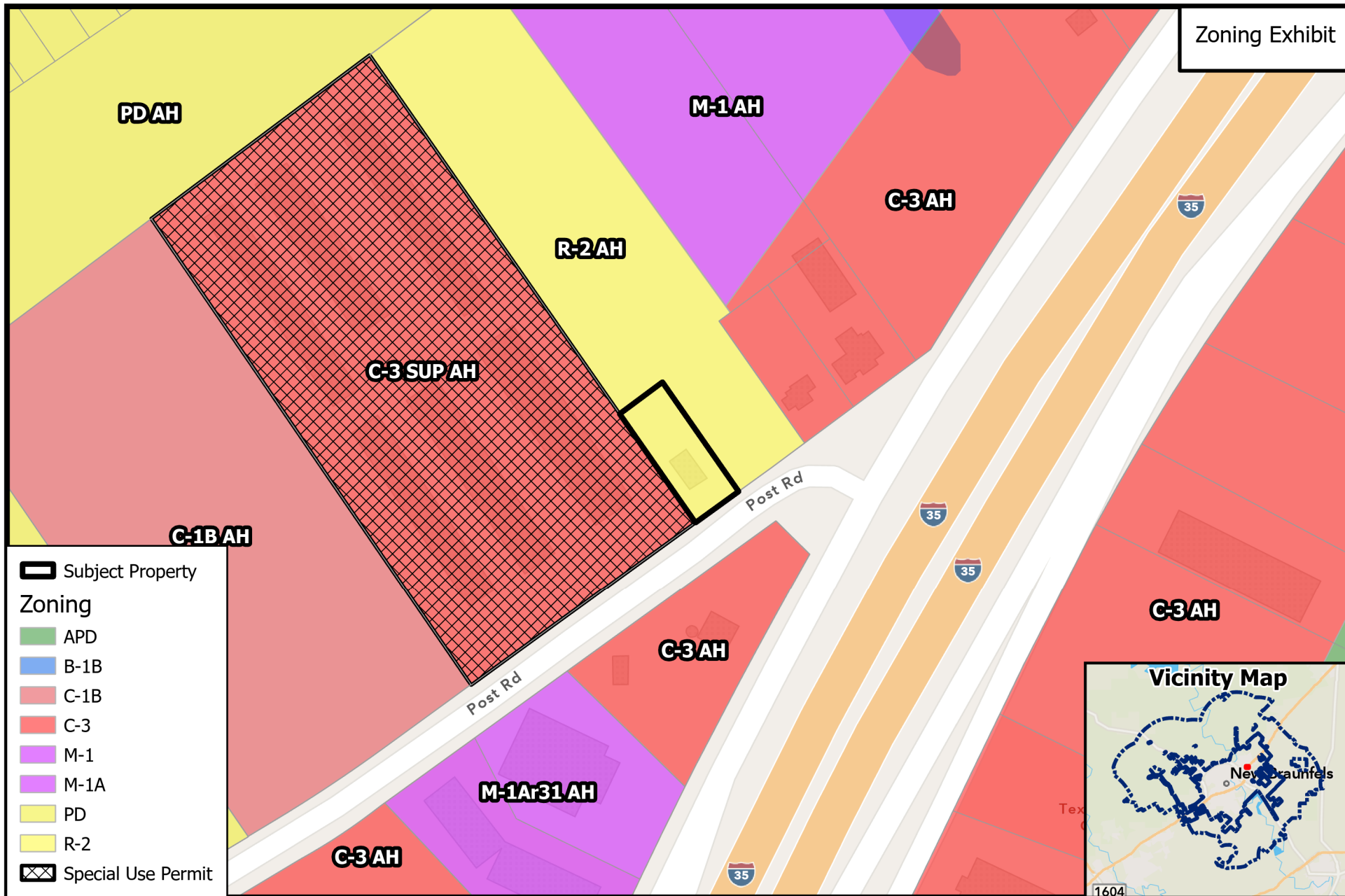


Path:  
B:\ZoneChange & SUPs\2024\PZ23-0480 -1977 Post Rd - R-2 AH to M-1A

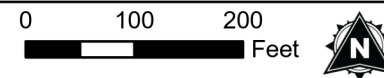
Source: City of New Braunfels Planning  
Date: 11/29/2023

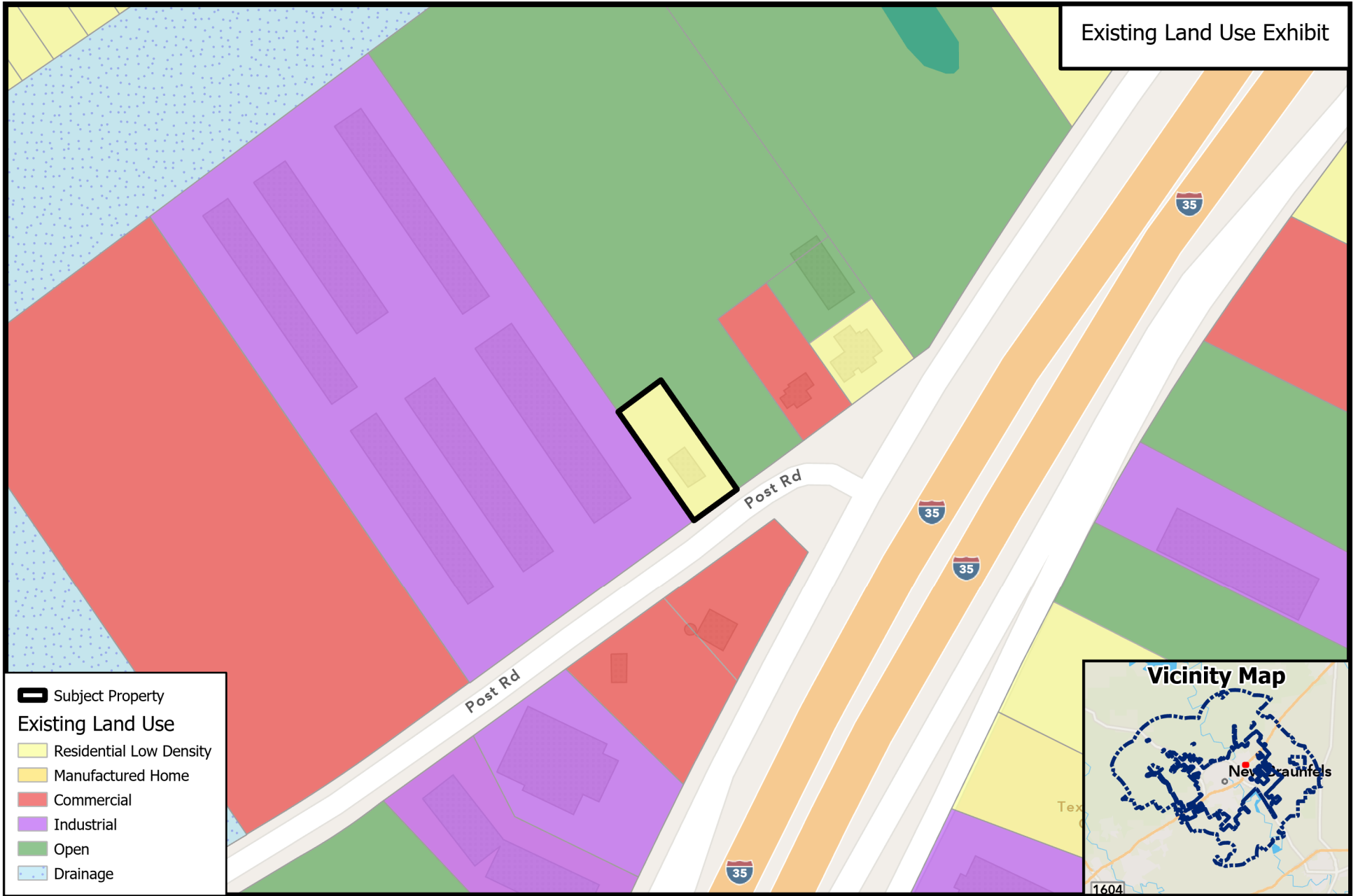
DISCLAIMER: This map and information contained in it were developed exclusively for use by the City of New Braunfels. Any use or reliance on this map by anyone else is at that party's risk and without liability to the City of New Braunfels, its officials or employees for any discrepancies, errors, or variances which may exist.





**PZ23-0480**  
**R-2 AH to M-1 AH**







Map of the Houston area showing the proposed Green Line and Purple Line transit routes. The map includes major highways like I-10, I-69, and I-25, and various colored zones (green, purple, orange, blue, yellow) representing different land use or transit planning areas. The Green Line is shown as a green line, and the Purple Line as a purple line. The map also shows existing transit lines and stations.

- ◆ Located in the Oak Creek Sub-Area
- ◆ Within the Transitional Mixed-Use Corridor and the IH 35 Corridor
- ◆ Near an existing Market center, and proposed Employment centers

- **Action 1.3:** Encourage balanced and fiscally responsible land use patterns.
- **Action 1.8:** Concentrate future investment in industrial and employment centers near existing and emerging hubs, such as the airport; and along existing high-capacity transportation networks, such as Interstate Highway 35.
- **Action 3.1:** Plan for healthy jobs/housing balance.