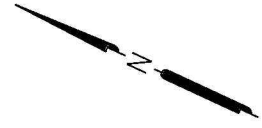
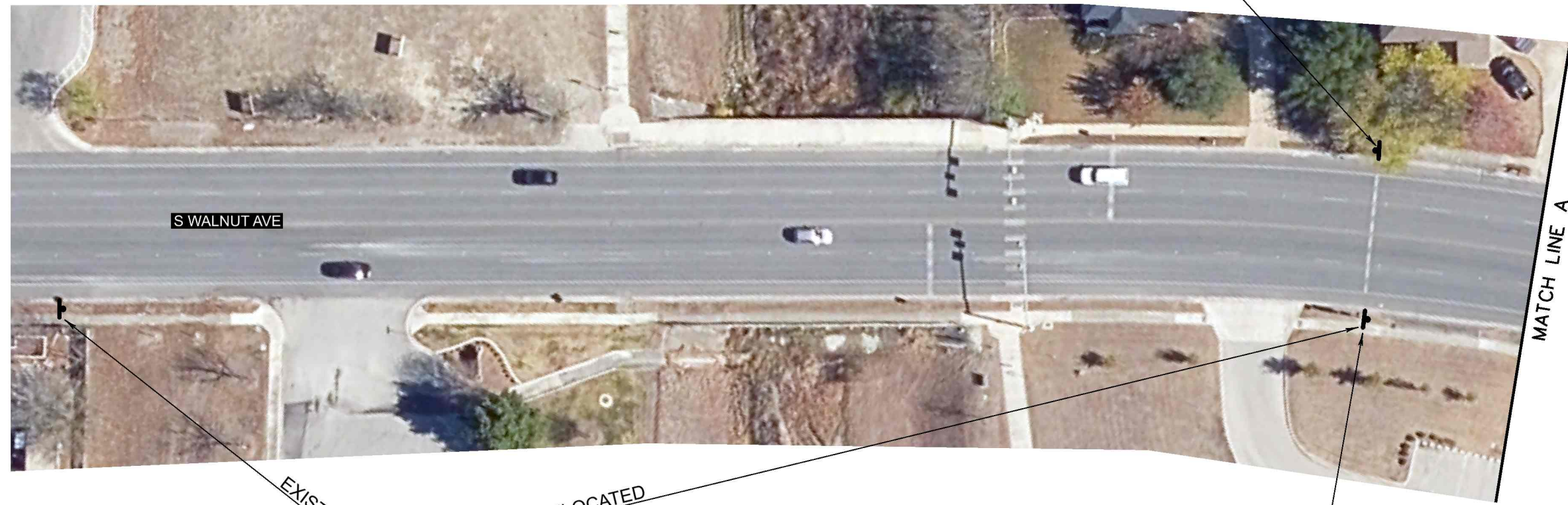


7/31/2023 10:10:17 AM \\fr118-02\user\ss\pub\lic\works\for\ow\documents\l\layouts\power\dr\of\w\l\ut-School\_Zone\l\ut-School\_Zone\_001.dgn



EXISTING, TO BE RELOCATED (SEE SHEET 2)



S WALNUT AVE

MATCH LINE A

EXISTING

RELOCATED



SCHOOL

EXISTING, TO BE RELOCATED



SCHOOL


SPEED LIMIT 20 WHEN FLASHING

CELL PHONE USE PROHIBITED UP TO \$200 FINE



EXISTING, TO BE RELOCATED (SEE SHEET 2)

NO.	DATE	REVISION	APPROV.

  
 City of New Braunfels  
 ENGINEERING DIVISION  
 WALNUT AVE  
 SCHOOL ZONE SIGNING LAYOUT  
 SCALE: 1"=50' SHEET: 1 OF 4







**SCHOOL**  
**SPEED LIMIT**  
**20**  
 6:45 AM-8:45 AM  
 2:50 PM-4:00 PM  
**CELL PHONE USE PROHIBITED**  
 UP TO \$200 FINE

EXISTING, TO BE REMOVED

**SCHOOL**  
 CELL PHONE USE PROHIBITED  
 UP TO \$200 FINE  
 ← →  
 6:30AM-8:50AM  
 2:00PM-3:50PM

NEW, TO BE INSTALLED

**SCHOOL**  
 CELL PHONE USE PROHIBITED  
 UP TO \$200 FINE  
 ← →  
 6:30AM-8:50AM  
 2:00PM-3:50PM


EXISTING

**SCHOOL**  
**SPEED LIMIT**  
**20**  
 6:45 AM-8:45 AM  
 2:50 PM-4:00 PM

NEW, TO BE INSTALLED

7/31/2023 10:01:52 AM \\F:\lib-02\user\ss\pub\lic\works\for\row\document\school\sign\power\dr\of\hwa\lut-School-Zone\hwa\lut-School-Zone\_003.dgn

NO.	DATE	REVISION	APPROV.

  
 City of  
**New Braunfels**  
 ENGINEERING DIVISION

WALNUT AVE  
 SCHOOL ZONE SIGNING LAYOUT

SCALE: 1"=50' SHEET: 3 OF 4

