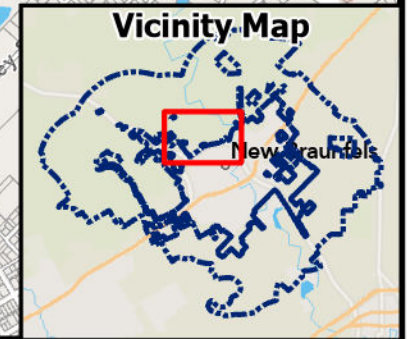
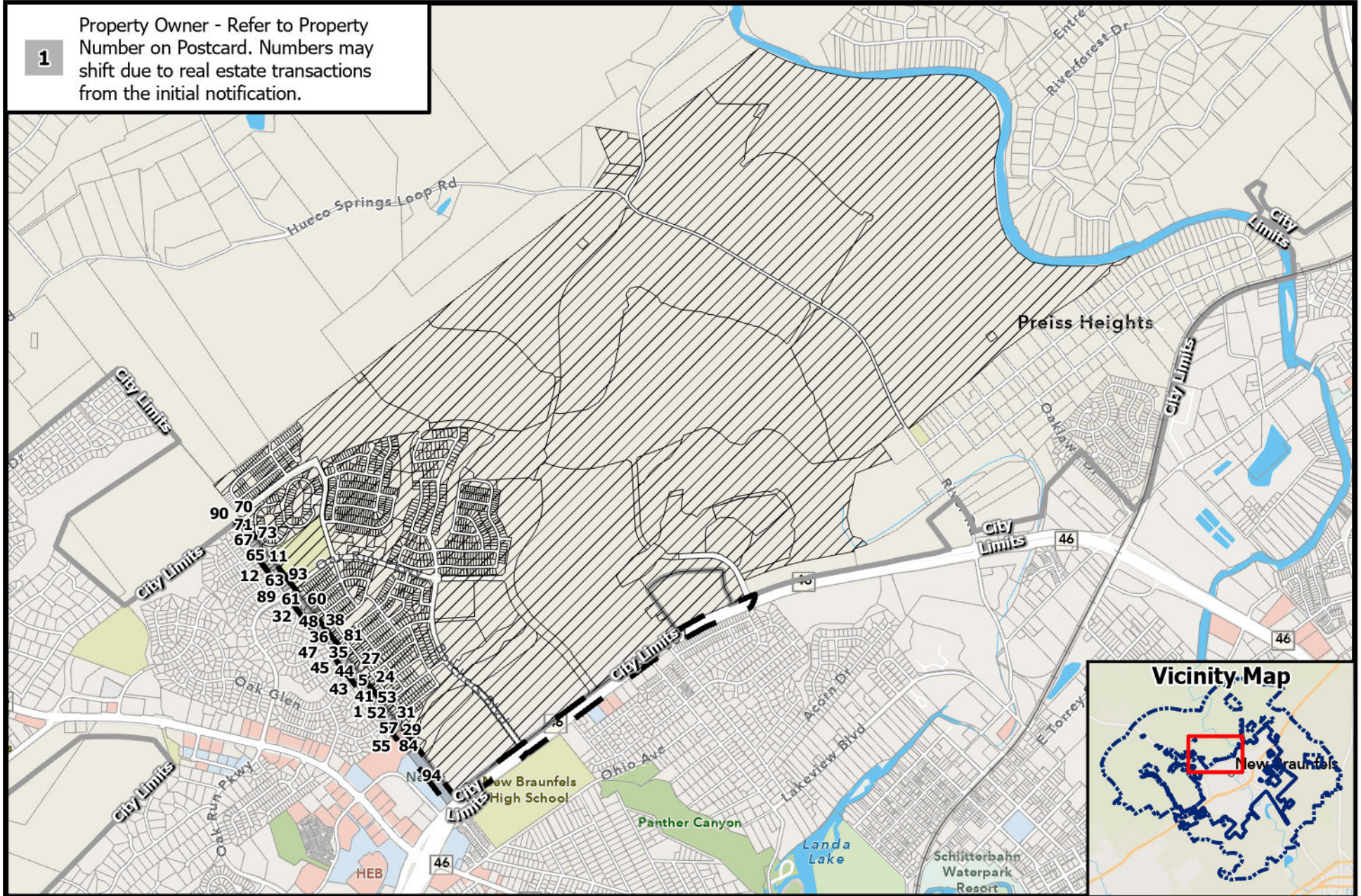


1

Property Owner - Refer to Property Number on Postcard. Numbers may shift due to real estate transactions from the initial notification.



CS24-0075

## Veramendi Master Framework Plan Amendment

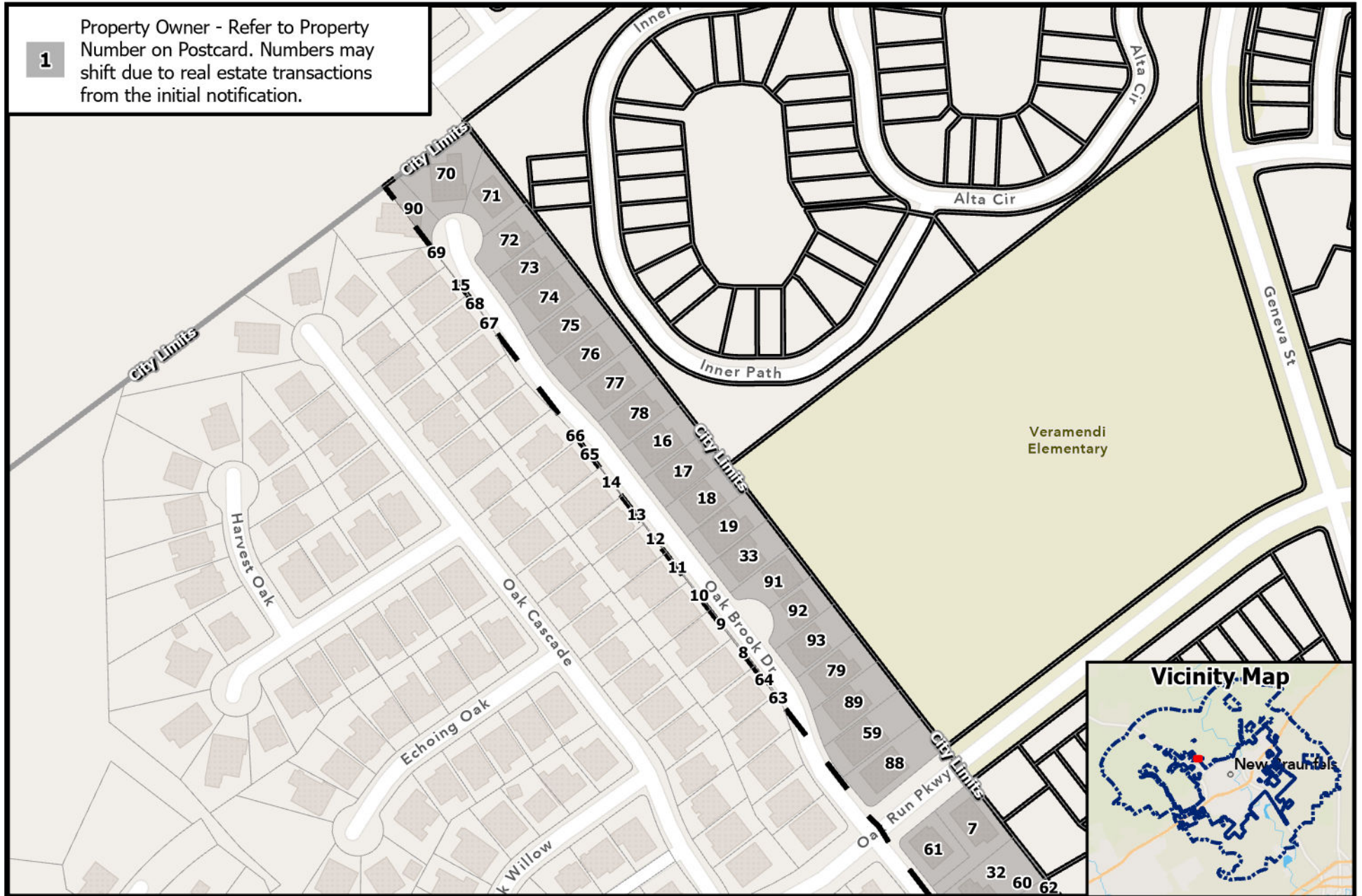
0 1,000 2,000 Feet





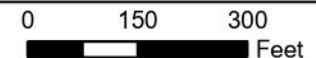
1

Property Owner - Refer to Property Number on Postcard. Numbers may shift due to real estate transactions from the initial notification.



CS24-0075

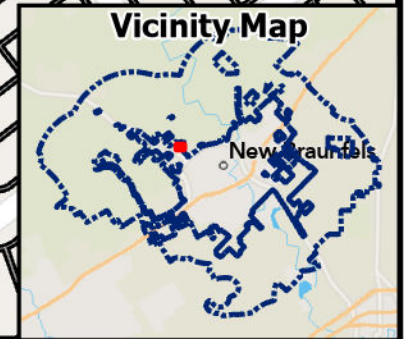
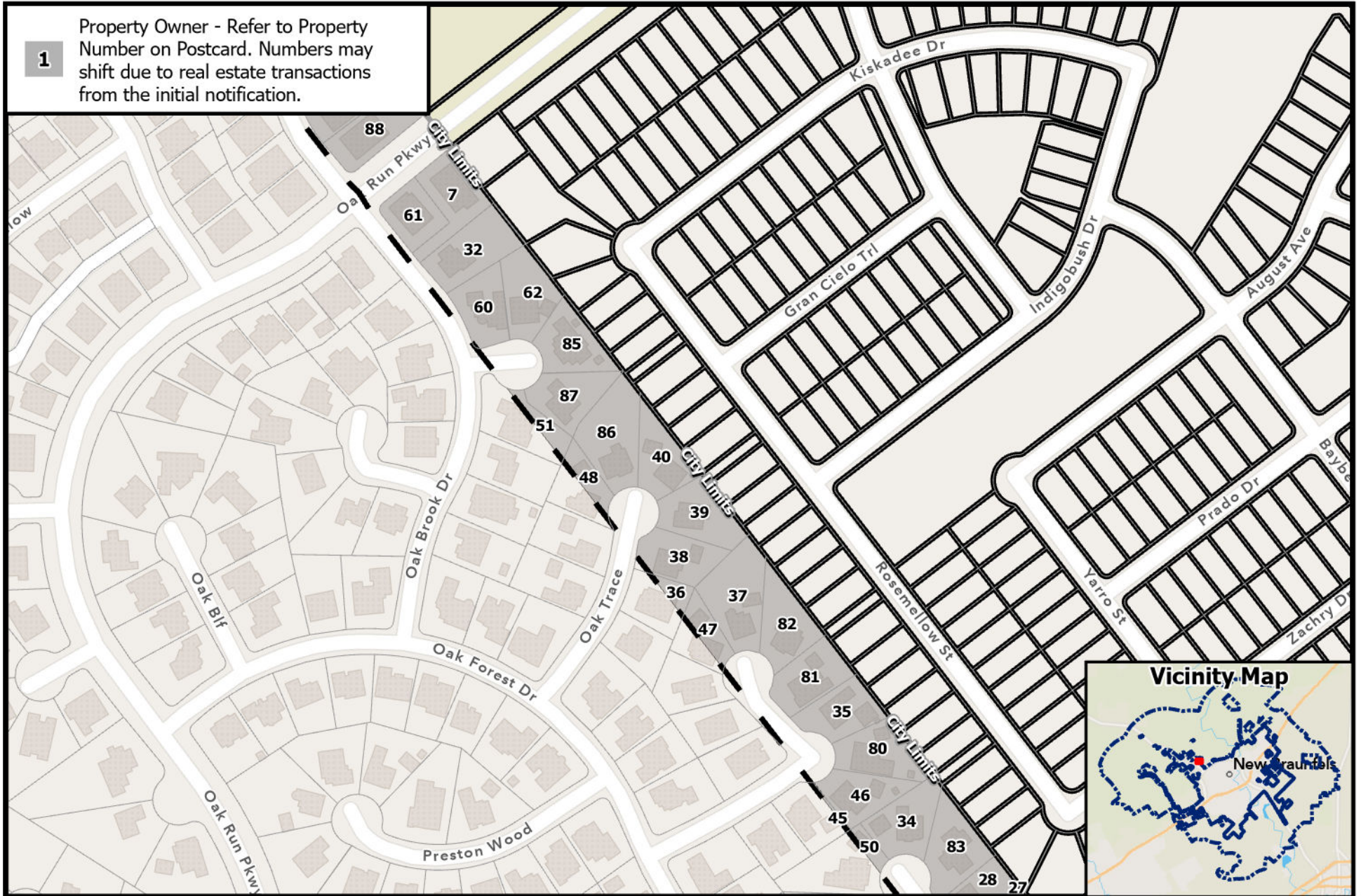
# Veramendi Master Framework Plan Amendment





1

Property Owner - Refer to Property Number on Postcard. Numbers may shift due to real estate transactions from the initial notification.



CS24-0075

## Veramendi Master Framework Plan Amendment

0 150 300 Feet



Path:  
P:\Plats\2024\CS24-0075 Master Framework Plan Amendment - Veramendi\CS24-0075.aprx

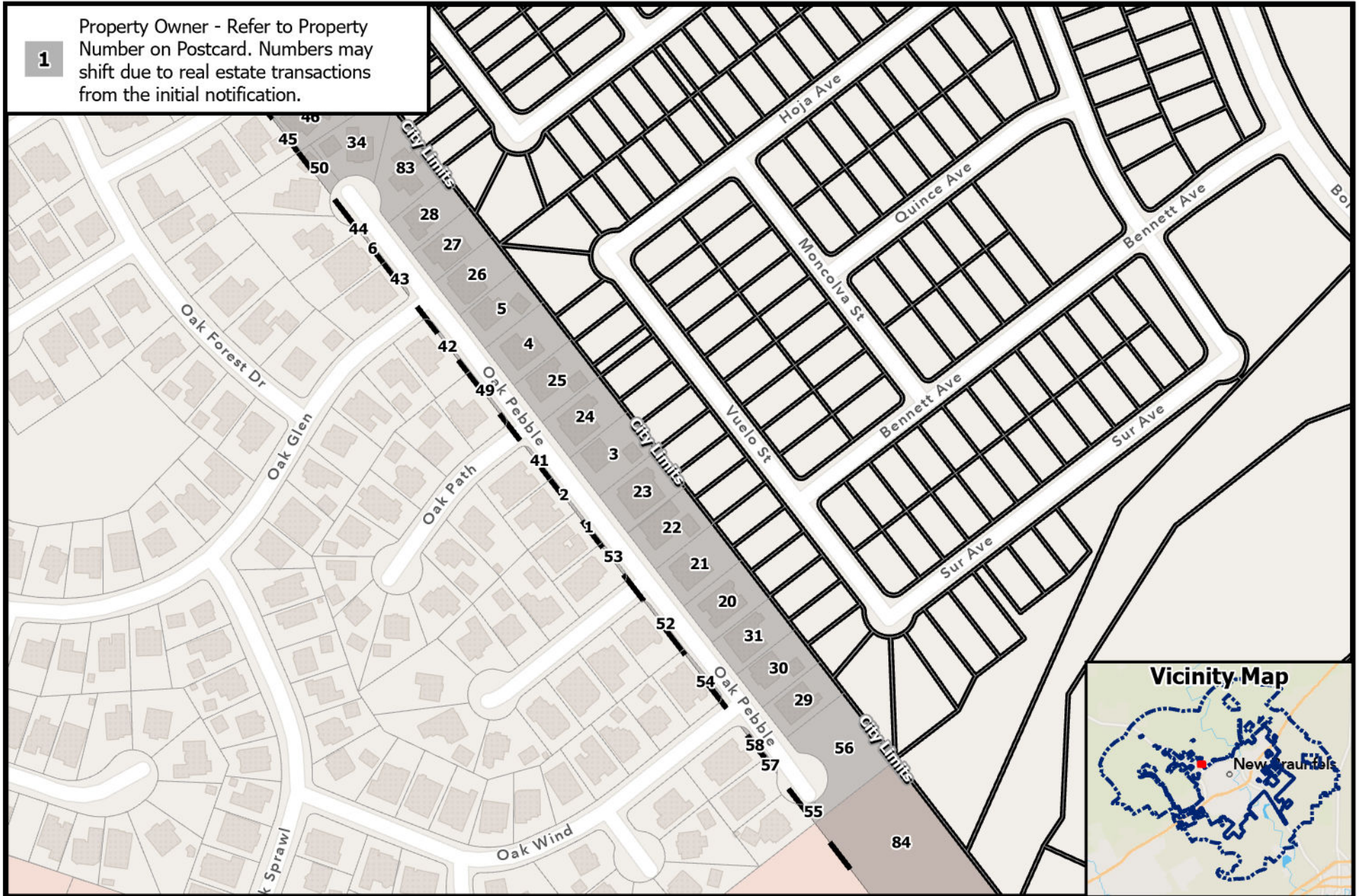
Source: City of New Braunfels Planning  
Date: 3/8/2024

DISCLAIMER: This map and information contained in it were developed exclusively for use by the City of New Braunfels. Any use or reliance on this map by anyone else is at that party's risk and without liability to the City of New Braunfels, its officials or employees for any discrepancies, errors, or variances which may exist.



1

Property Owner - Refer to Property Number on Postcard. Numbers may shift due to real estate transactions from the initial notification.



CS24-0075

## Veramendi Master Framework Plan Amendment

0 150 300  
Feet



Path:  
P:\Plats\2024\CS24-0075 Master Framework Plan Amendment - Veramendi\CS24-0075.aprx

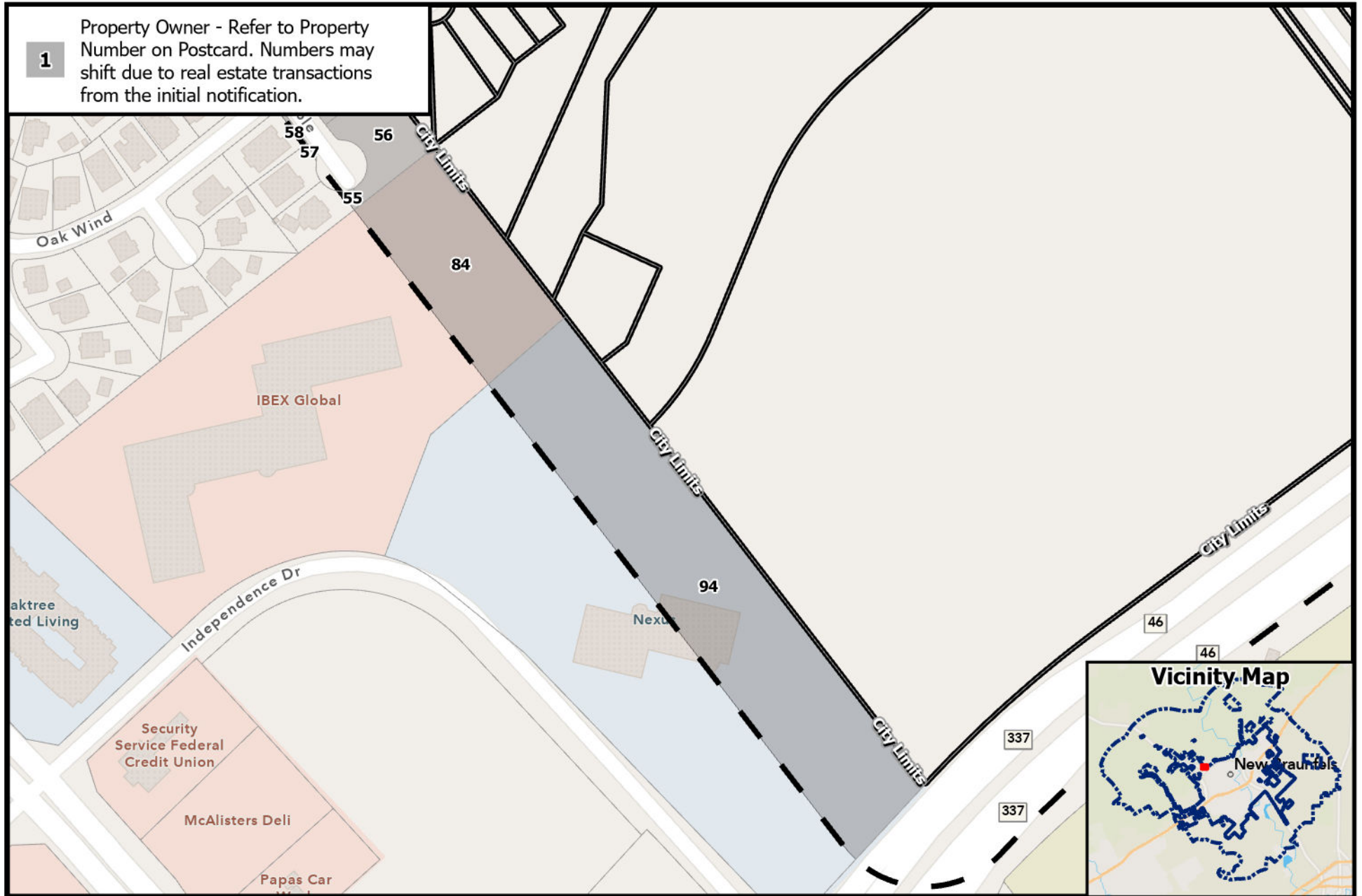
Source: City of New Braunfels Planning  
Date: 3/8/2024

DISCLAIMER: This map and information contained in it were developed exclusively for use by the City of New Braunfels. Any use or reliance on this map by anyone else is at that party's risk and without liability to the City of New Braunfels, its officials or employees for any discrepancies, errors, or variances which may exist.



1

Property Owner - Refer to Property Number on Postcard. Numbers may shift due to real estate transactions from the initial notification.



CS24-0075

## Veramendi Master Framework Plan Amendment

0 150 300  
Feet



Path:  
P:\Plats\2024\CS24-0075 Master Framework Plan Amendment - Veramendi\CS24-0075.aprx

Source: City of New Braunfels Planning  
Date: 3/8/2024

DISCLAIMER: This map and information contained in it were developed exclusively for use by the City of New Braunfels. Any use or reliance on this map by anyone else is at that party's risk and without liability to the City of New Braunfels, its officials or employees for any discrepancies, errors, or variances which may exist.