

**PZ22-0268**  
**Zone Change: C-3 AH & APD AH to MU-A AH**

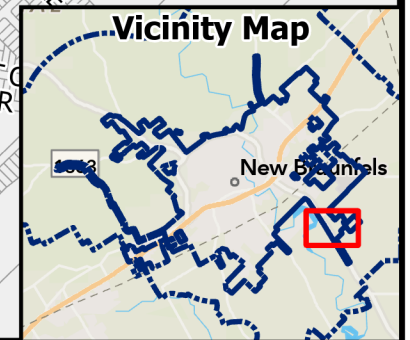
0 675 1,350  
 Feet

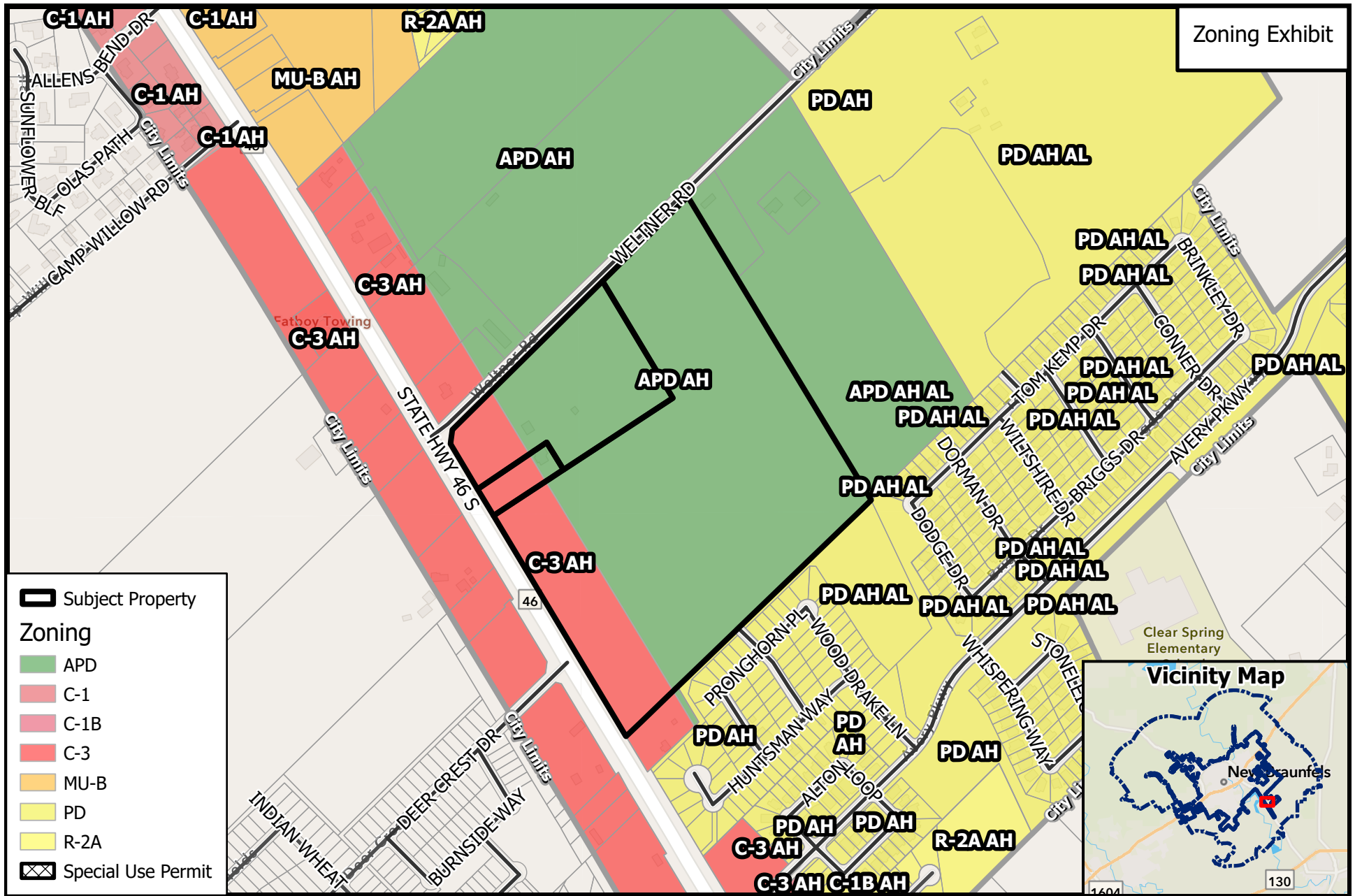


Path:  
 P:\ZoneChange-SUP-Replats\2022\PZ22-0268 - HKEK - 1983 SH 46 S - Zone

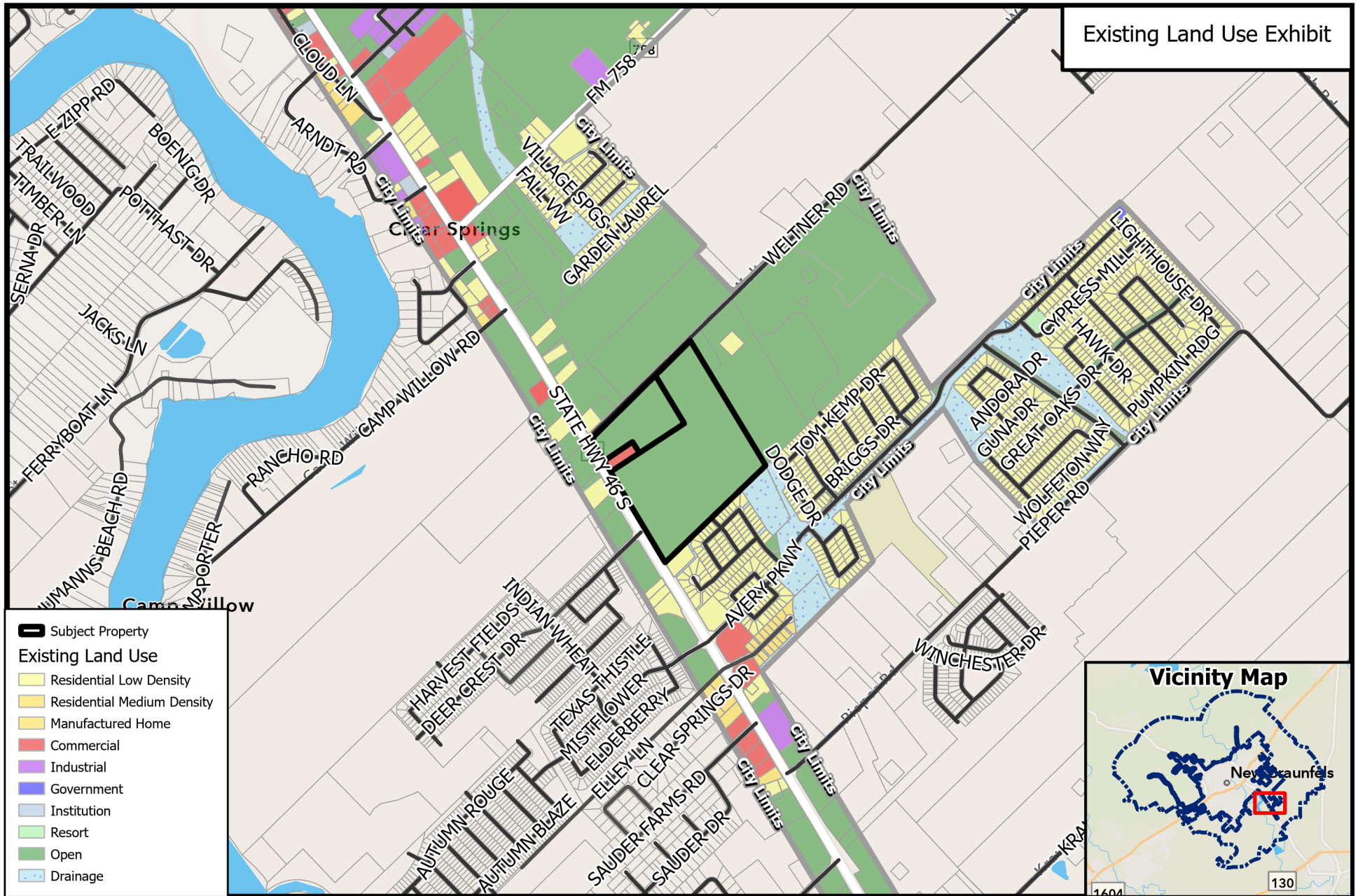
Source: City of New Braunfels Planning  
 Date: 7/13/2022

DISCLAIMER: This map and information contained in it were developed exclusively for use by the City of New Braunfels. Any use or reliance on this map by anyone else is at that party's risk and without liability to the City of New Braunfels, its officials or employees for any discrepancies, errors, or variances which may exist.









**PZ22-0268**  
**Zone Change: C-3 AH & APD AH to MU-A AH**

0 880 1,760  
 Feet



Path:  
 P:\ZoneChange-SUP-Replats\2022\PZ22-0268 - HKEK - 1983 SH 46 S - Zone

Source: City of New Braunfels Planning  
 Date: 7/13/2022

DISCLAIMER: This map and information contained in it were developed exclusively for use by the City of New Braunfels. Any use or reliance on this map by anyone else is at that party's risk and without liability to the City of New Braunfels, its officials or employees for any discrepancies, errors, or variances which may exist.



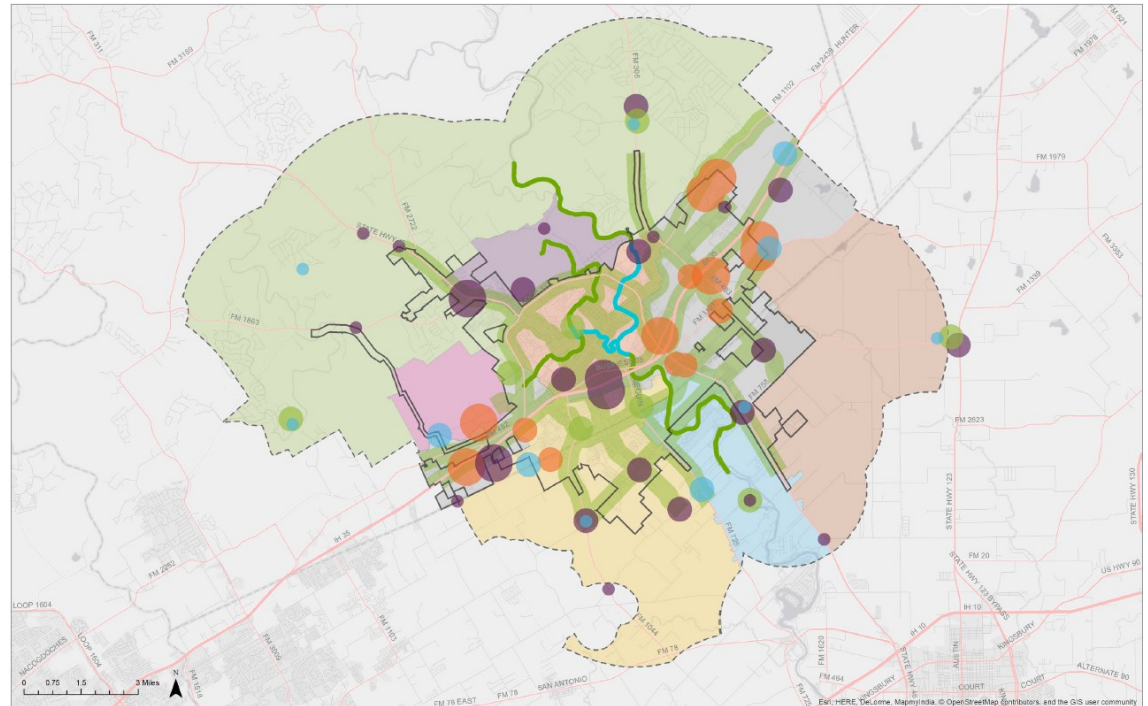


## Envision New Braunfels

A SPECIAL PLACE BY DESIGN

- ◆ Located in the Freiheit Sub Area and Dunlap Sub Area.
- ◆ Along a Transitional Mixed-Use Corridor
- ◆ Near Existing Education Centers and a Proposed Civic Center and Market Center.

## Future Land Use Map



- **Action 1.3:** Encourage balanced and fiscally responsible land use patterns.
- **Action 1.6:** Incentivize infill development and redevelopment to take advantage of existing infrastructure.
- **Action 3.1:** Plan for healthy jobs/housing balance.
- **Action 3.21:** Enhance local recreational venues.
- **Action 3.3:** Balance commercial centers with stable neighborhoods.