



1



2023 Season in Review

- Tubing in New Braunfels is a resilient form of recreation, even in drought conditions
- There was an increase in River Management Fees collected in comparison to the last few years
- Parking revenue collected was a new high for the season
- Parking and litter totals point to higher weekday use
- There is a need for re-education on the Disposable Container Ban

2

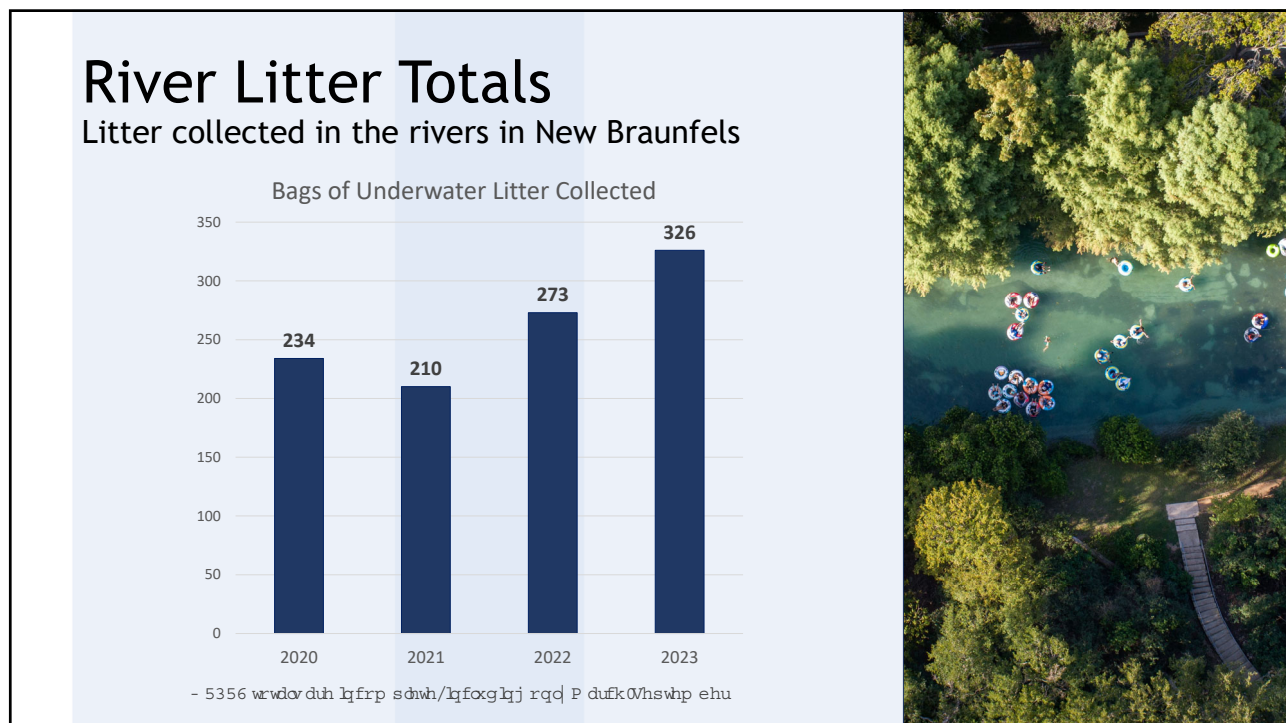


2023 Season in Review

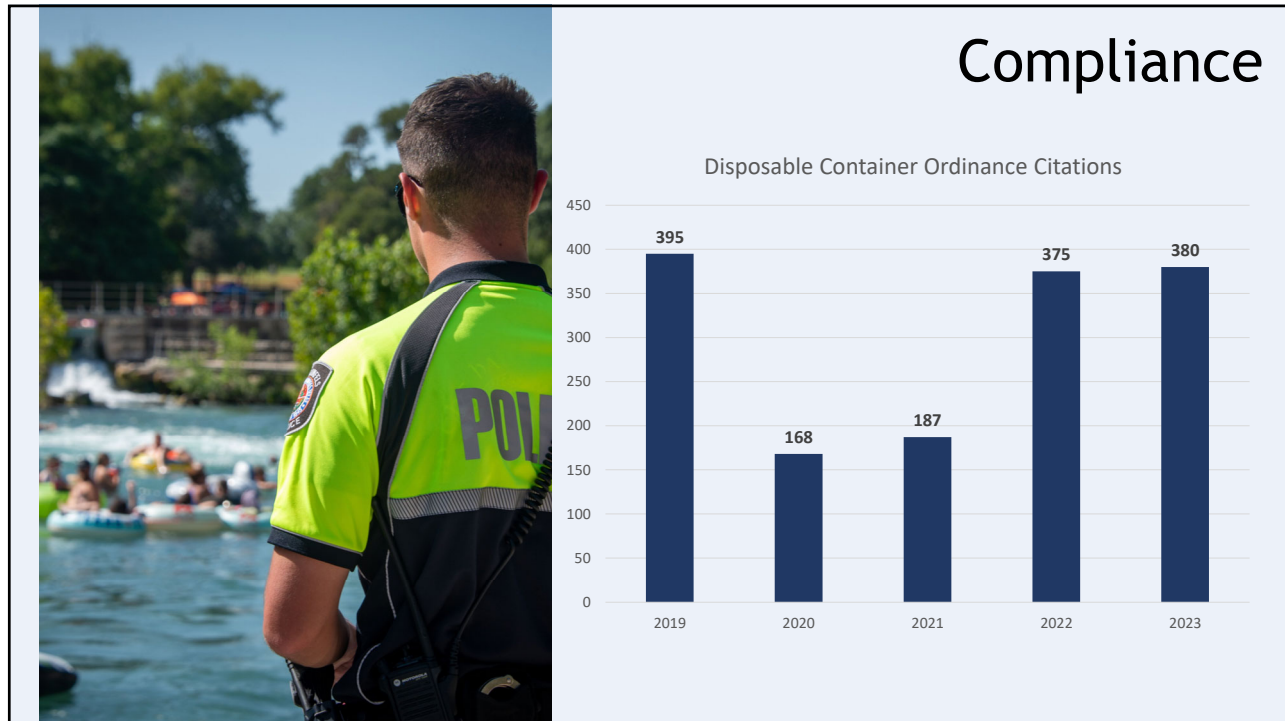
Continued

- It was hot and dry- again!
 - Triple digit temperatures most of the summer
 - No river closures
 - The float was long- over 4 hours in July
- There were no staging days for the Comal River
- Low river flow brought new challenges from one weekend to the next
- The free lifejacket program continues to see tremendous use

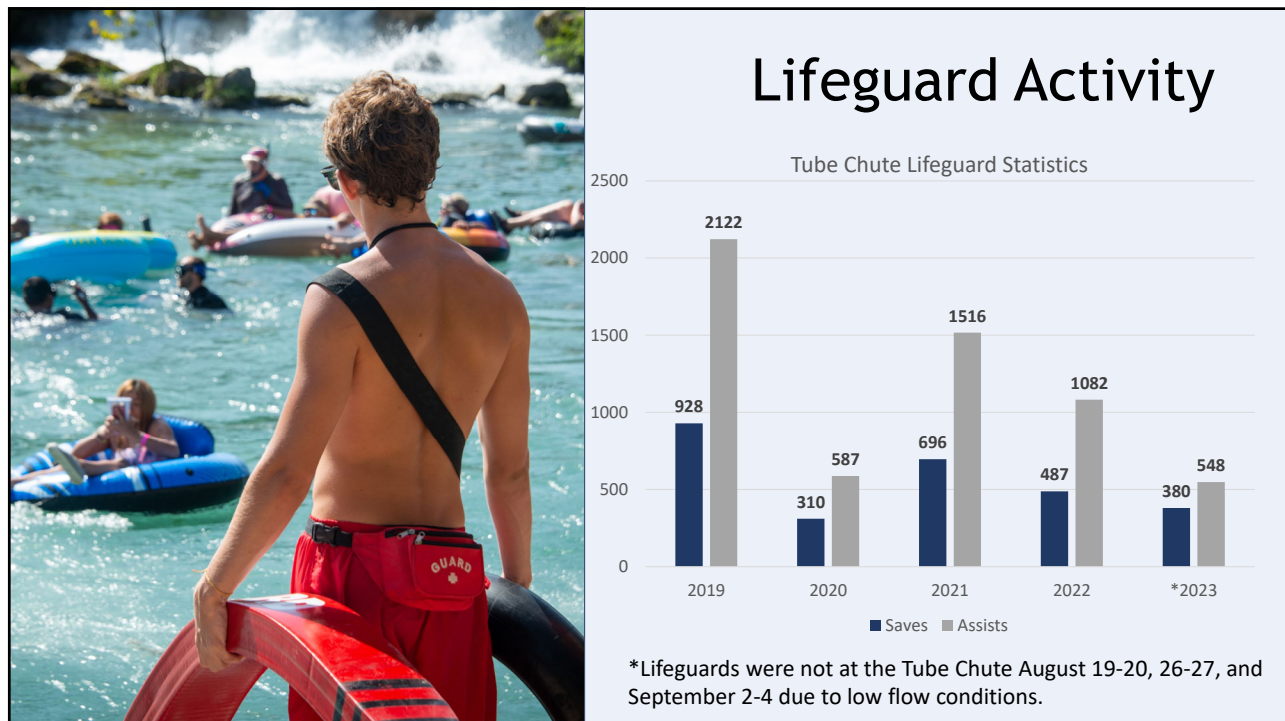
3



4



5



6

Parking Revenue

- Parking is the #1 source of revenue in the River Fund
- 5 paid parking lots, 4 are free for residents
- No rain days
- Parking revenue points to an increase in weekday visitation

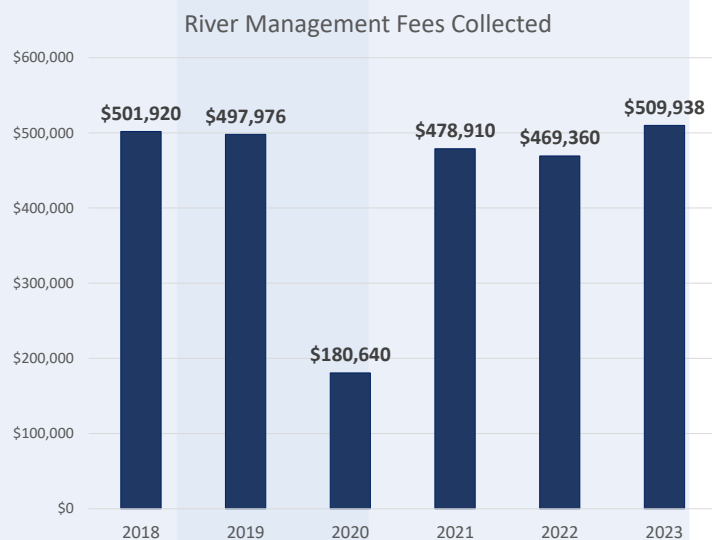


7

7

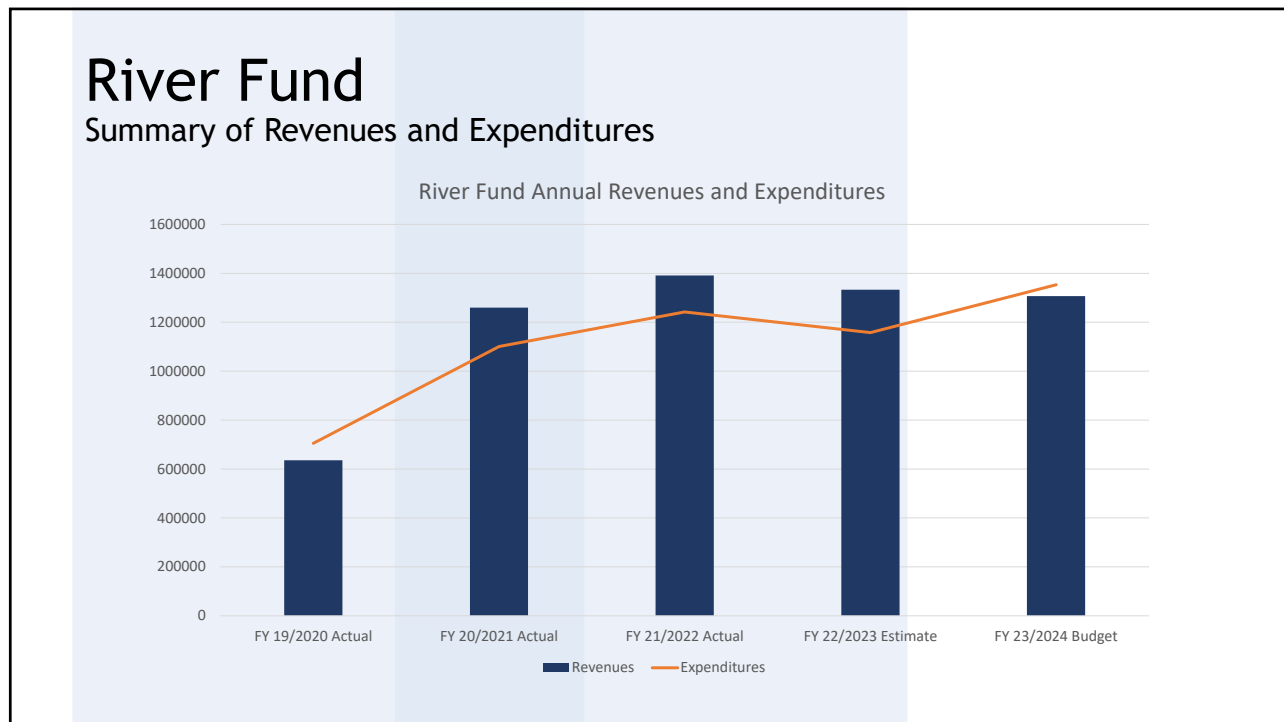
River Management Fee

- The River Management Fee is \$2 per user on weekends and holidays from Memorial Day Weekend- Labor Day
- Extra holiday collection day on July 3rd
- 22% of River Management Fees are collected by the City, and 78% are collected by River Outfitters



8

8



9

Dos Rios Watershed Cleanup

7th Annual Cleanup
October 14, 2023

Helping Here.

H-E-B

GBRA
Guadalupe-Blanco River Authority

LEAPFROG PROMOTIONS
Design | Printing | Promotional Products
www.LeapFrogPromos.com

Chick-fil-A
WestPointe Village

HEADWATERS
AT THE COMAL
WHERE IT BEGINS.

CEMEX

Wurstfest
SINCE 1983
NEW BRAUNFELS, TX

COPILLOT CREATIVE CO.

TEXAS TUBES

SCHLITTERBAHN
WATERPARKS & RESORT

ROCKIN' R

EDWARDS AQUIFER AUTHORITY
MANAGE • ENHANCE • PROTECT

THE HOME DEPOT

GRUENE COFFEE HAUS
GRUENE

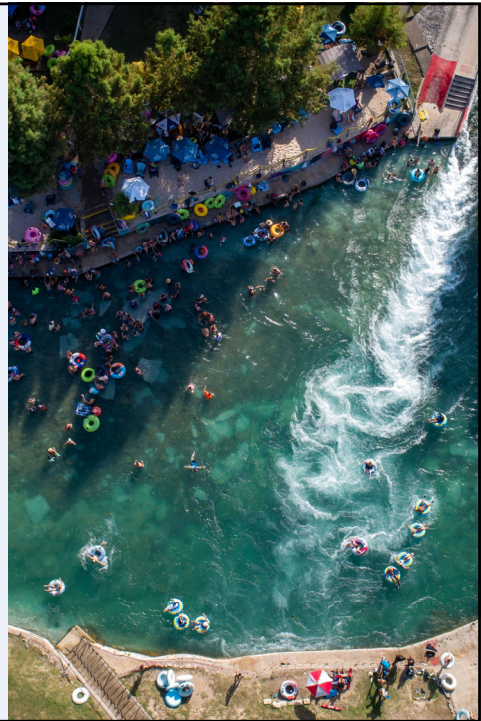
NEW BRAUNFELS Herald-Zeitung
Reporting the life story of New Braunfels since 1882

MOLAK CORPORATION
NB SA

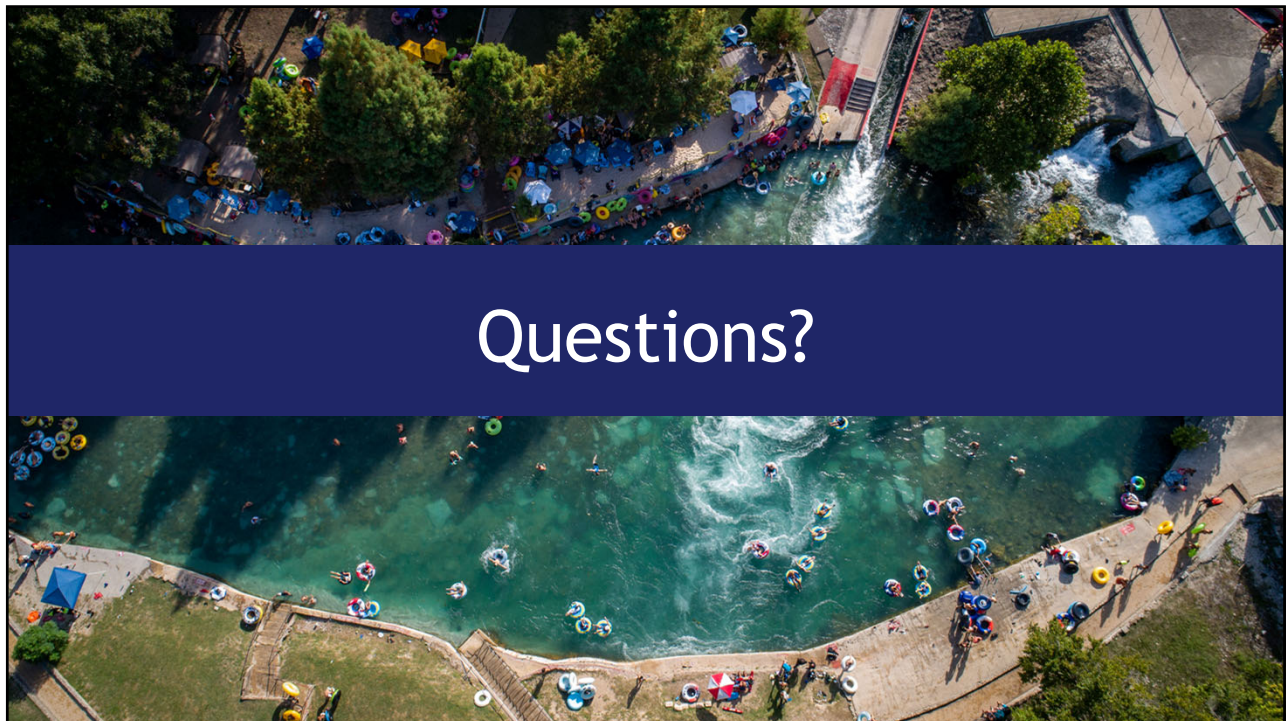
10

River Advisory Committee & Upcoming Projects

- Financial forecasting to ensure long-term solvency of the River Fund
- Comal River Improvement Project- Last Public Exit
- Comal River and Parks Sign Plan
- Consider application for National Water Trail recognition for the Comal River
- Consider Paid Parking at Guadalupe River Parks
- Consider Park Hours at City Tube Chute Park
- Direction for River Advisory Committee



11



12