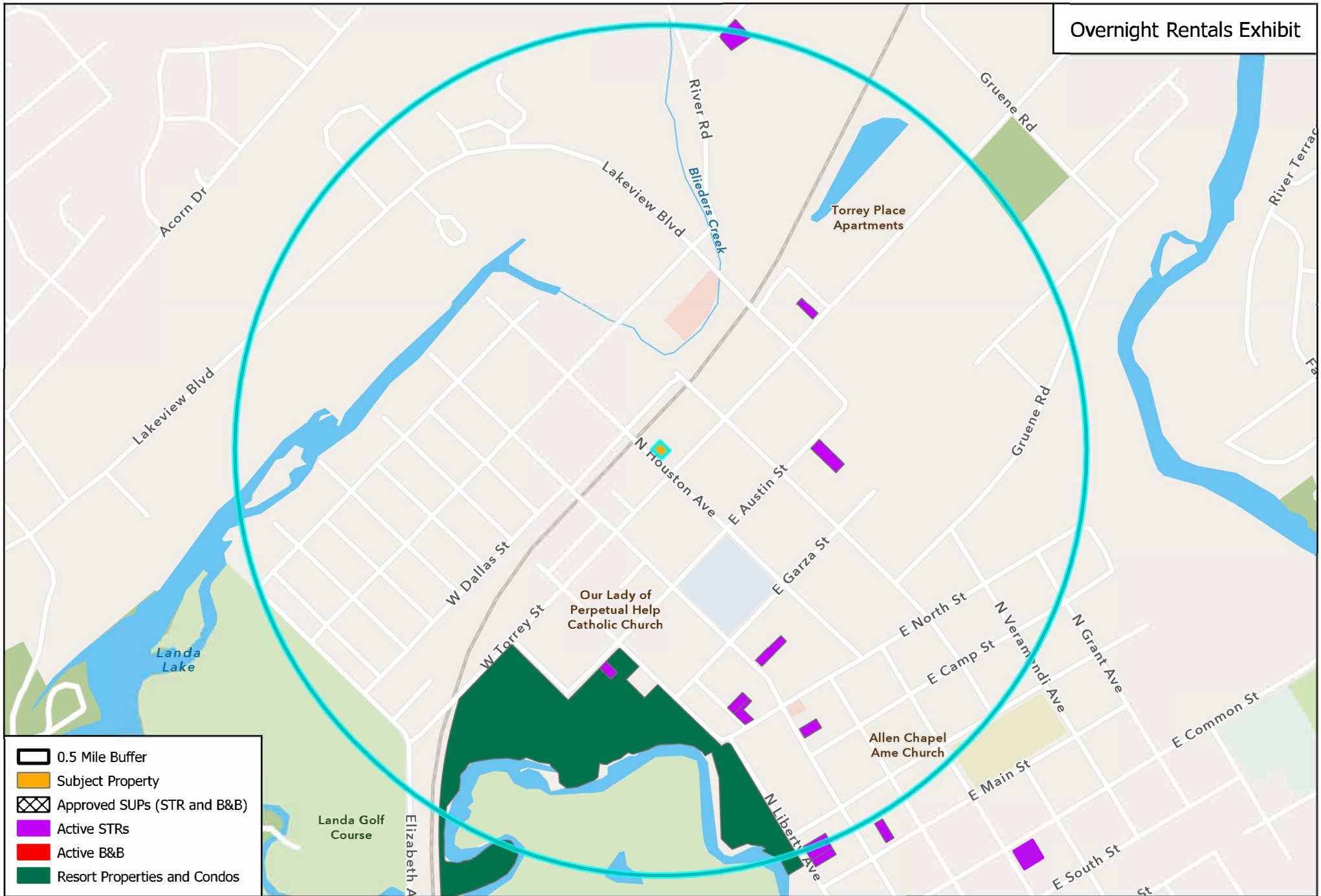










- **Action 1.3: Encourage balanced and fiscally responsible land-use patterns.**
- **Action 1.14: Ensure regulations do not unintentionally inhibit the provisions of a variety of flexible and innovative lodging options and attractions.**



-  0.5 Mile Buffer
-  Subject Property
-  Approved SUPs (STR and B&B)
-  Active STRs
-  Active B&B
-  Resort Properties and Condos