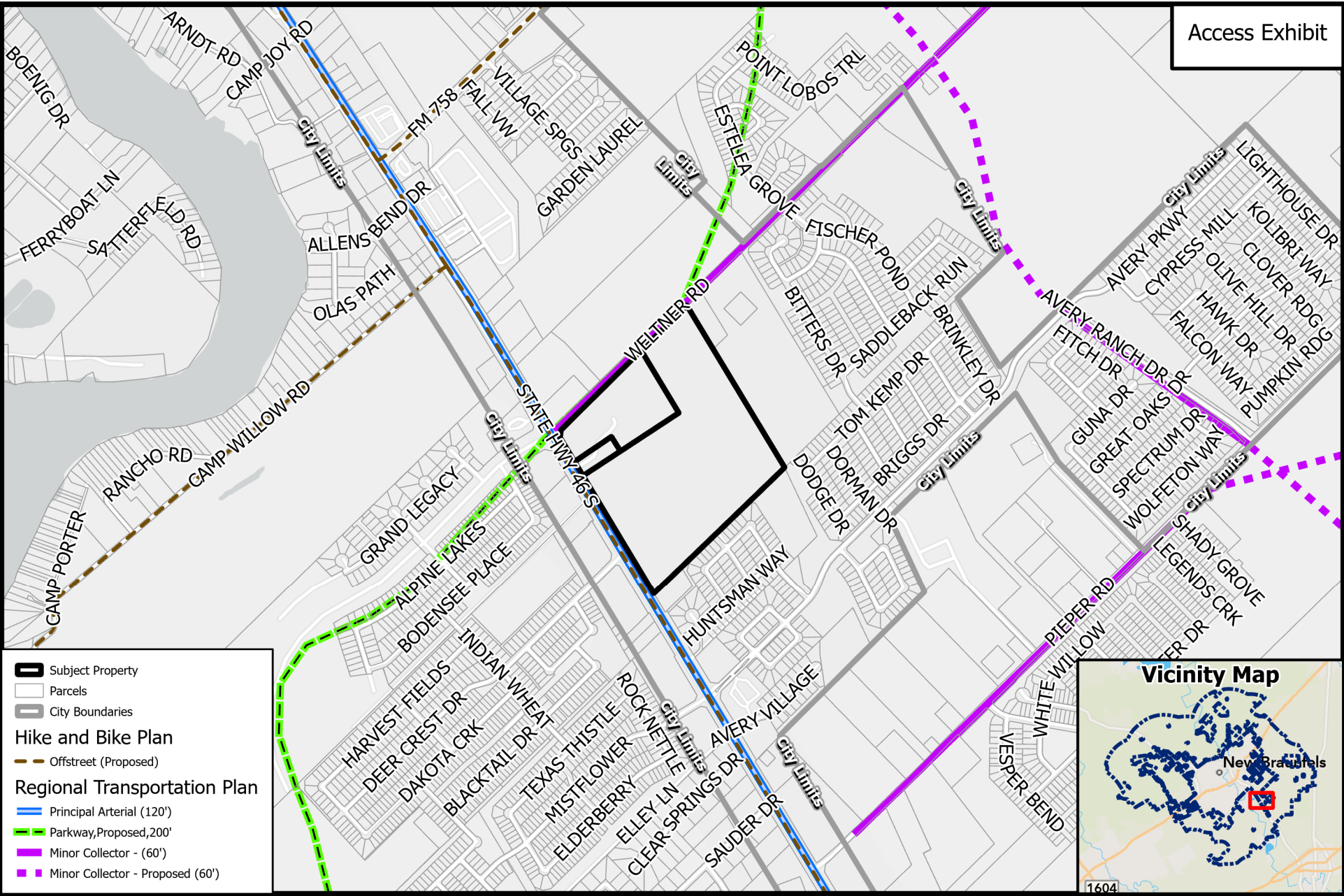


PZ24-0285
C-1B AH & MU-A AH to MU-A AH
1983 State Hwy 46 S





Legend

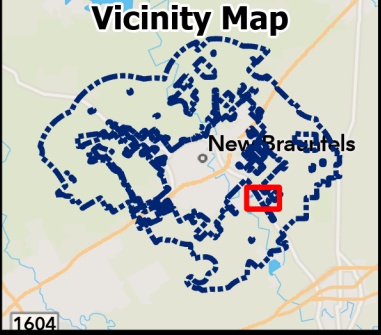
- Subject Property
- Parcels
- City Boundaries

Hike and Bike Plan

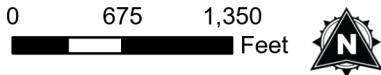
- Offstreet (Proposed)

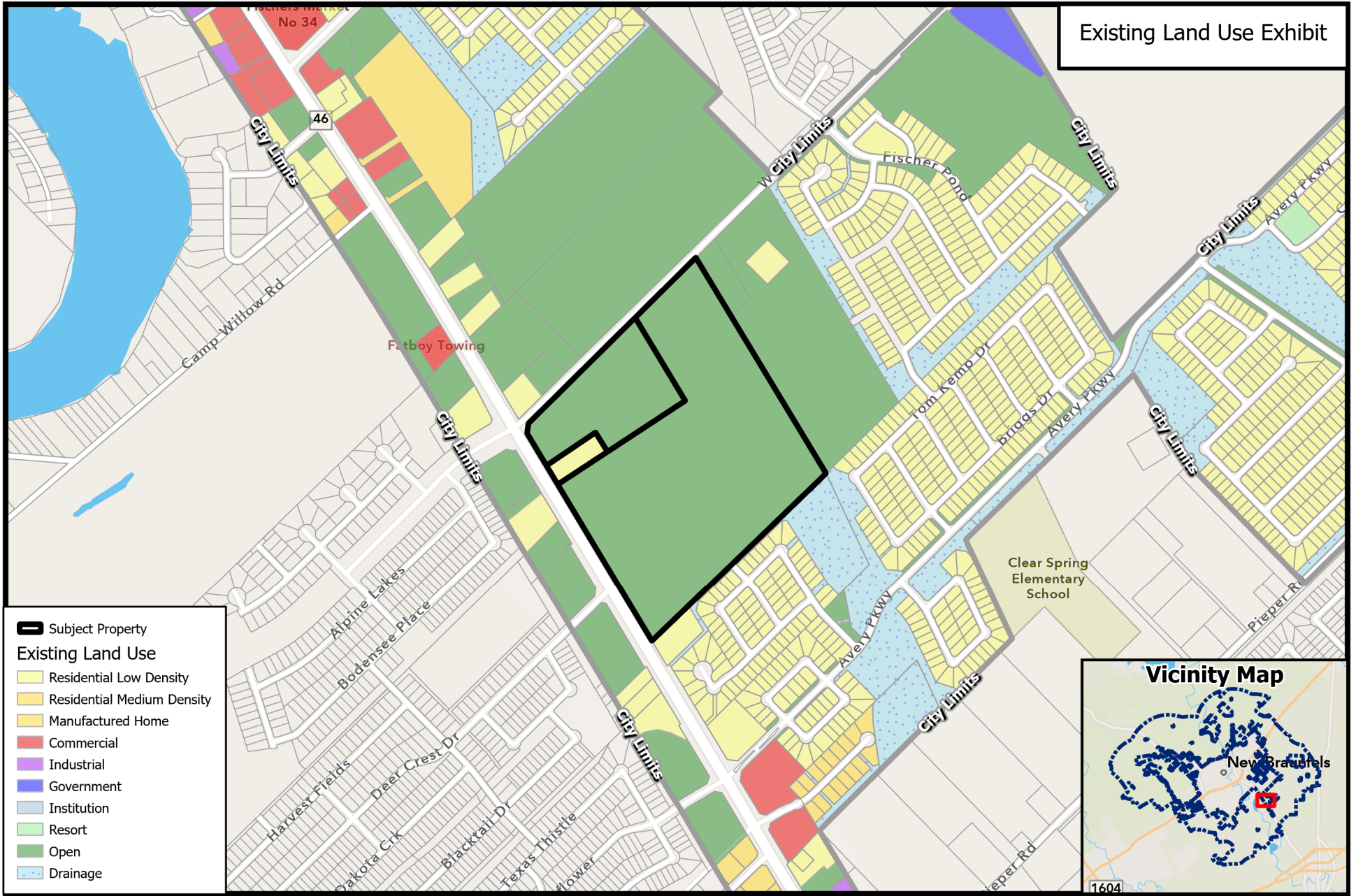
Regional Transportation Plan

- Principal Arterial (120')
- Parkway, Proposed, 200'
- Minor Collector - (60')
- Minor Collector - Proposed (60')



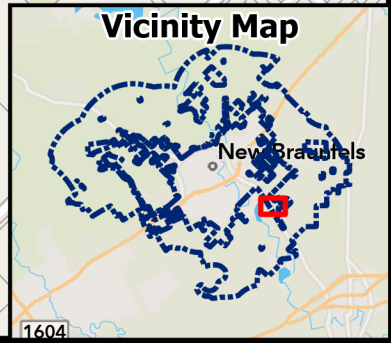
PZ24-0285
C-1B AH & MU-A AH to MU-A AH
1983 State Hwy 46 S





Existing Land Use Exhibit

- Subject Property
- Existing Land Use**
- Residential Low Density
- Residential Medium Density
- Manufactured Home
- Commercial
- Industrial
- Government
- Institution
- Resort
- Open
- Drainage



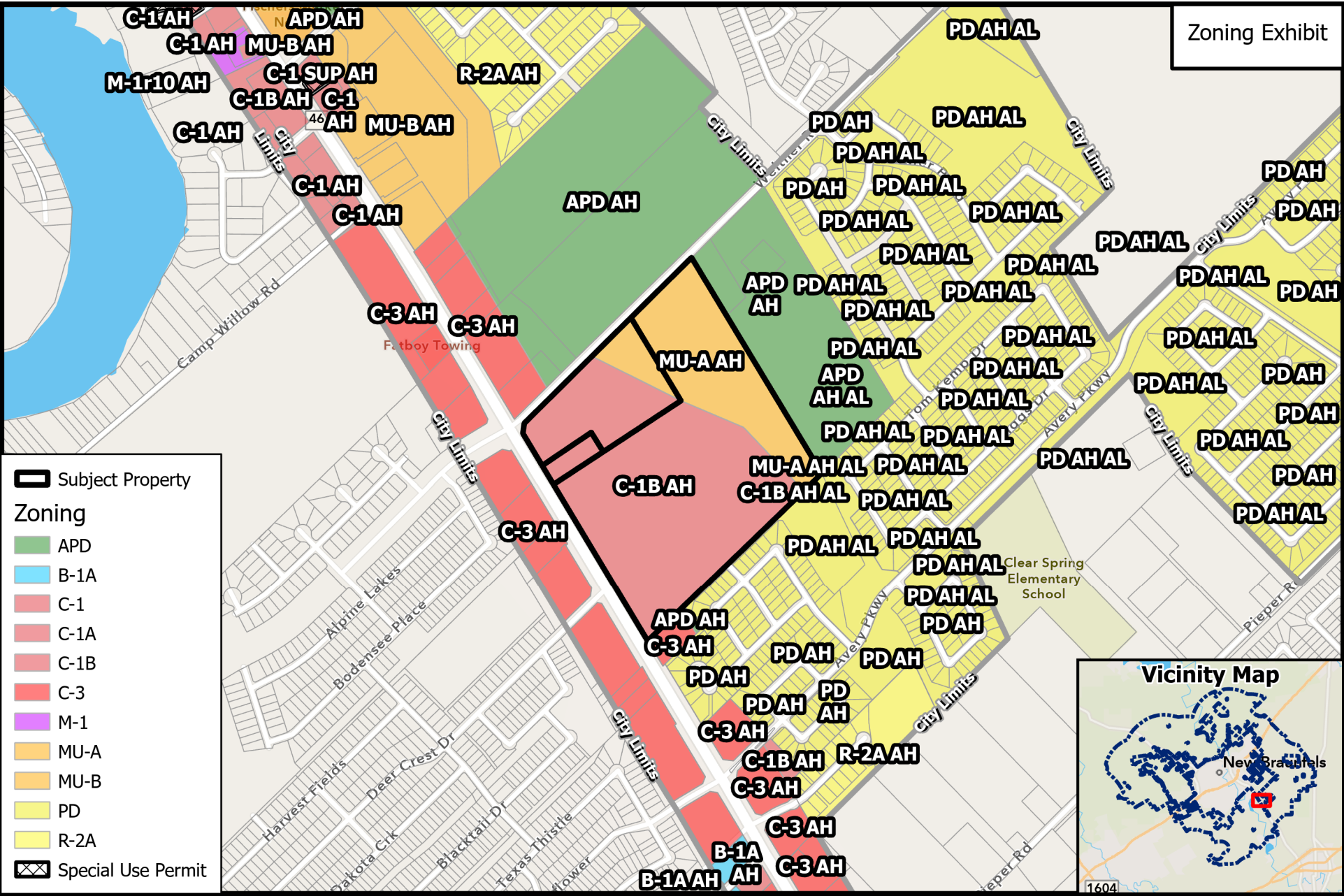
PZ24-0285
C-1B AH & MU-A AH to MU-A AH
1983 State Hwy 46 S



Path: P:\ZoneChange & SUPs\2024\PZ24-0285 - 1983 SH 46 - C-1B + MU-A AH to MU-A

Source: City of New Braunfels Planning
 Date: 9/5/2024

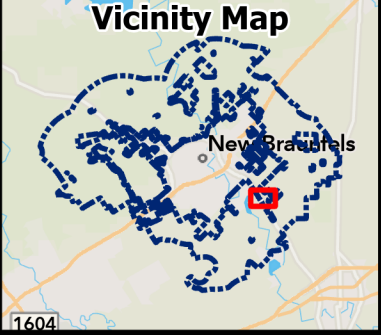
DISCLAIMER: This map and information contained in it were developed exclusively for use by the City of New Braunfels. Any use or reliance on this map by anyone else is at that party's risk and without liability to the City of New Braunfels, its officials or employees for any discrepancies, errors, or variances which may exist.



Subject Property

Zoning

- APD
- B-1A
- C-1
- C-1A
- C-1B
- C-3
- M-1
- MU-A
- MU-B
- PD
- R-2A
- Special Use Permit



PZ24-0285
C-1B AH & MU-A AH to MU-A AH
1883 State Hwy 46 S

