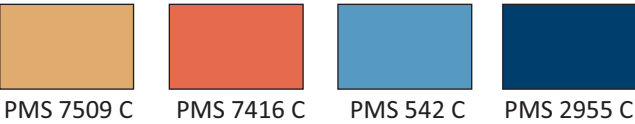


HORIZONTAL SQ. TUBE STL. TRUSS STRUCTURE BEHIND LETTERS TO BE DESIGNED AND ENGINEERED PER STRUCTURAL ENGINEERING. DESIGN INTENT ONLY REPRESENTED HERE.

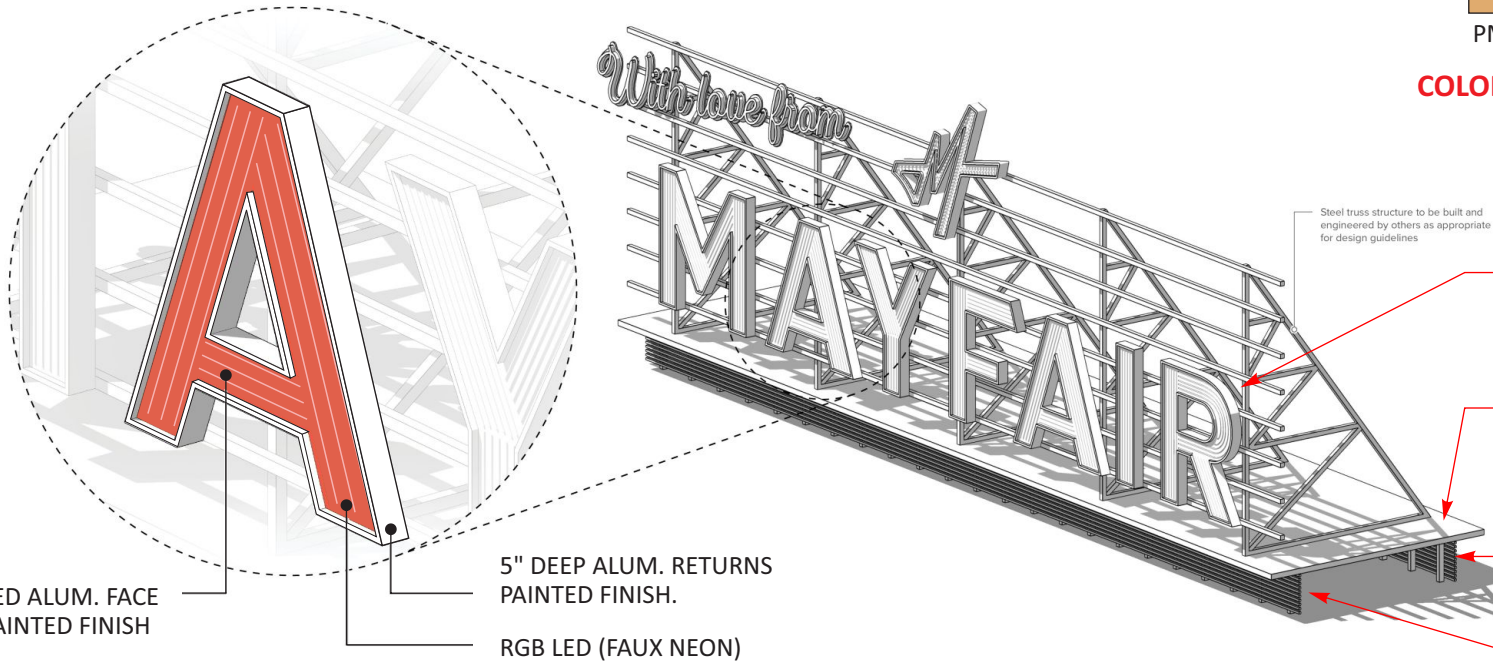
BRAND PAINTED ALUM. LETTERS AND BRAND MARK WITH EXPOSED RGB FAUX NEON INFILL AS NEEDED; COLORED AREA RECESSED 4" FROM PAINTED FRAME

CONCEPTUAL PLACEMAKING IDENTITY

SCALE: 3/32" = 1' - 0"



COLORS TO BE VERIFIED OR CONFIRMED WITH CUSTOMER



RECESSED ALUM. FACE WITH PAINTED FINISH

5" DEEP ALUM. RETURNS PAINTED FINISH.

RGB LED (FAUX NEON)

FINAL LETTER SIGNAGE REDUCED 25%

PLATFORM (COVER) HAS BEEN REMOVED FROM SCOPE OF WORK

FABRICATED SCREEN WALL TO REMAIN

FABRICATED SCREEN WALL TO REMAIN

3-D CONCEPTUAL PLACEMAKING IDENTITY

NOT TO SCALE

Design #	
0633408Ar12	
Sheet	1 of 13
Client	
MAYFAIR	
Address	
Ih35 between Watson Ln., New Braunfels, TX	
Account Rep.	STAN MACRUM MELANIE DeLEON
Designer	TQ
Date	8/15/22
Approval / Date	
Client	
Sales	
Estimating	
Art	
Engineering	
Landlord	
Revision/Date	
R108-18-22BR: add SMB Eng. calc's to design.	
R209-07-22PA: Added more mfg. details per phone conference with D.M.	
R302-08-23PA: Revised Letter Signs on frame structure with 2 Options - Option 1 - 5" deep open channel letters, redesigned with 3 rows of Contour LED's; Option 2 - FCO Alum. with 2" alum. angle perimeter all back for rigging, external lighting by customer. Water Tower. Calculated & added center steel support & Plan. recalculated all piers as 48" dia. x 11' deep.	
R312-12-23PA: Revised "M" Logo to read "MAYFAIR" 72" odc around tower rail with 2 strokes of Contour LED's.	
R401-01-23PA: Revised "B" Water Tower to have 2 Options: Opt 1 - 36" Base Center Pipe Support x 5 dia. x 20' deep Pier with (6) 8" x 8" sq. steel supports; Opt 2 - 36" Base Center Pipe Support x 5 dia. x 20' deep Pier with (4) 10" x 10" sq. steel supports. Showed artist's graphic at both options.	
R402-02-23PA: Removed Opt. 1 & 2 from rendering on pg. 18; B - Opt. 1. Changed all letters to red, not multi-colored; B Opt 2 Removed Mural Graphic, changed all letters to red, not multi-colored.	
R403-03-23PA: Removed Option 2 - Non-H letters for sign "A"; Reduced "A" letter signage 25%, keeping same height framework, reducing number of support piers from 18 to 14; adjusted rendering on page 1 showing correct number rows of contour led tubing; updated site plan showing all signage approx. locations. (Note: Signs C1-C5 are on separate two R403-04-23PA).	
R3101-10-23PA: Broke out Mockup plan of Letter "M".	
R1101-01-23PA: updated a site plan from customer.	
R411-11-23PA: Updated site plan and showed 2 optional locations for sign A; Included Mockup targeting photos with approximate sign placement; photo survey studies; Removed sign B from package temporarily.	
R412-12-23PA: Updated photo / renderings at sheets 5 & 7.;	
R1122-02-23PA: Deleted page 8.	
R1129-02-23PA: Corrected Option 1 sign location on Option-1 Photo-rendering Exhibits 1 & 2.	
R1113-03-23PA: Reduced sign structure height by eliminating a 7' frame section and also reducing the lower platform accordingly; R1104-03-23PA: Added a square footage study showing each letter height x width and percentage of sign that is actual letter portion of sign.	
R1112-07-23PA: Kept Option 1 placement, deleted option 2; Changed The Faux Neon at "MAYFAIR" to be RGB Faux Neon	
R12-01-24PA: Removed Sign Square footage calculations showing "Live Area"	



National Headquarters	14201 Sovereign Road #101 Fort Worth, TX 76155 (214) 902-2000 Fax (214) 902-2044
	17319 San Pedro Avenue Suite 200 San Antonio, TX 78232 (210) 349-3804 Fax (210) 349-8724
Northeast US	2301 River Road, Suite 201 Louisville, KY 40206 (502) 897-9800 Cell (502) 554-2575
Georgia	111 Woodstone Place Dawsonville, GA 30534 (678) 725-8852 Fax (210) 349-8724
South Texas	PO BOX 125 206 Doral Drive Portland, TX 78374 (961) 563-5999 Fax (361) 643-6533

This drawing is the property of Chandler Signs, LLC. All rights to its use for reproduction are reserved by Chandler Signs, LLC.

FINAL ELECTRICAL CONNECTION BY CUSTOMER

THIS SIGN IS INTENDED TO BE INSTALLED IN ACCORDANCE WITH ARTICLE 600 OF THE NATIONAL ELECTRICAL CODE AND/OR OTHER APPLICABLE LOCAL CODES. THIS INCLUDES PROPER GROUNDING & BONDING OF THE SIGN. SIGN WILL BEAR UL LABEL(S).





Design #

0633408Ar12

Sheet 2 of 13

Client

MAYFAIR

Address

Ih35 between Watson Ln.,
New Braunfels, TX

Account Rep. STAN MACRUM
MELANIE DeLEON

Designer TQ

Date 8/15/22

Approval / Date

Client	
Sales	
Estimating	
Art	
Engineering	
Landlord	

Revision/Date

R1/08-18-22/R: add SMB Eng. calc's to design.
R2/09-07-22/PK: Added more mfg. details per phone conference with D.M.
R3/23-23/PK: Revised Letter Signs on frame structure with 2 Options - Option 1 - 5" deep open channel letters, redesigned with 3 rows of Contour LED's; Option 2: FCO Alum. with 2" alum. angle perimeter all back for uplight, external lighting by customer. Water Tower. Calculated & welded center steel support & Plan. recalculated all piers as 48" dia. x 11' deep.
R3/12/23/PK: Revised "M" Logo to read "MAYFAIR" 72" odc around tower rail with 2 strokes of Contour LED's.
R4/31/23/PK: Revised "B" Water Tower to have 2 Options: Opt 1 - 36" Base Center Pipe Support x 5 dia. x 20' deep Pier with (4) 8" x 8" sq. steel supports; Opt 2 - 36" Base Center Pipe Support x 5 dia. x 20' deep Pier with (4) 10" x 10" sq. steel supports. Showed artist's graphic at both regions.
R5/3/16/23/PK: Removed Opt. 1 & 2 from rendering on pg. 18; B - Opt. 1: Changed all letters to red, not multi-colored; B Opt 2: Removed Mural Graphic, changed all letters to red, not multicolored.
R6/6/23/23/PK: Removed Option 2 - Non-H letters for sign "A"; Reduced "A" letter signage 25%, keeping same height framework, reducing number of support piers from 18 to 14; adjusted rendering on page 1 showing correct number rows of contour led tubing; updated site plan showing all signage approx. locations. (Note: Signs C1-C5 are on separate set R6/23/24/R1)
R7/10/12/23/PK: Broke out Mockup plan of Letter "M"; (11/01/23/PK: updated a site plan from customer.
R8/11/15/23/PK: Updated site plan and showed 2 optional locations for sign A; Included Mockup lighting photo with approximate sign placement; photo survey studies; Removed sign B from package temporarily.
R9/11/23/23/PK: Updated photo / renderings at sheets 5 & 7.; (11/22/23/PK: Deleted page 8.
(11/29/23/PK: Corrected Option 1 sign location on Option-1 Photo-rendering Exhibits 1 & 2.
R10/11/20/23/PK: Reduced sign structure height by eliminating a 7' frame section and also reducing the lower platform accordingly. (12/04/23/PK: Added a square footage study showing each letter height x width and percentage of sign that is actual letter portion of sign.
R11/12/07/23/PK: Kept Option 1 placement, deleted option 2; Changed The Faux Neon at "MAYFAIR" to be RGB Faux Neon
R12/20/12/24/PK: Removed Sign Square footage calculations showing "Live Area"



National Headquarters 14201 Sovereign Road #101
Fort Worth, TX 76155
(214) 902-2000 Fax (214) 902-2044

San Antonio 17319 San Pedro Avenue
Suite 200
San Antonio, TX 78232
(210) 349-3804 Fax (210) 349-8724

Northeast US 2301 River Road, Suite 201
Louisville, KY 40206
(502) 897-9800 Cell (502) 554-2575

Georgia 111 Woodstone Place
Dawsonville, GA 30534
(678) 725-8852 Fax (210) 349-8724

South Texas PO BOX 125 206 Doral Drive
Portland, TX 78374
(961) 563-5599 Fax (361) 643-6533

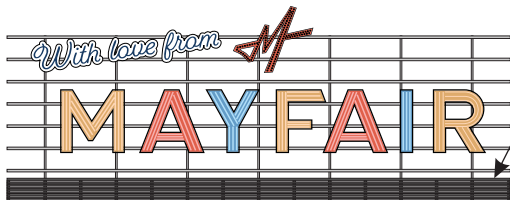
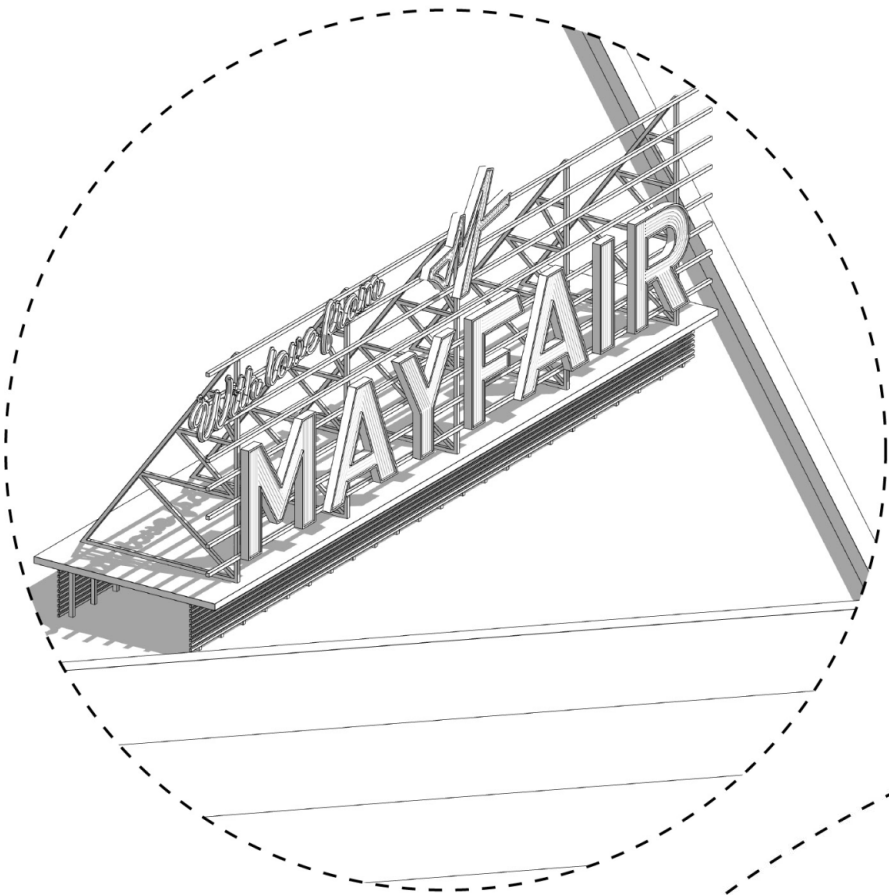
This drawing is the property of
Chandler Signs, LLC
All rights to its use for reproduction
are reserved by Chandler Signs, LLC

FINAL ELECTRICAL
CONNECTION BY
CUSTOMER

THIS SIGN IS INTENDED TO BE INSTALLED
IN ACCORDANCE WITH ARTICLE 600 OF THE
NATIONAL ELECTRICAL CODE AND/OR OTHER
APPLICABLE LOCAL CODES. THIS INCLUDES
PROPER GROUNDING & BONDING OF THE SIGN.
SIGN WILL BEAR UL LABEL(S).

3-D CONCEPTUAL PLACEMAKING IDENTITY

NOT TO SCALE



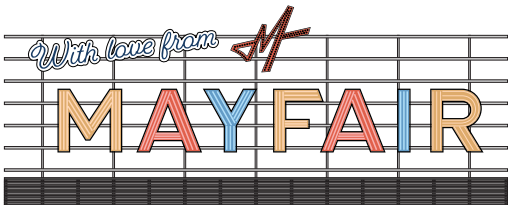
Once service road buildings are completed, neon sign is meant to be removed from site and placed on architecture near the I-35 corridor

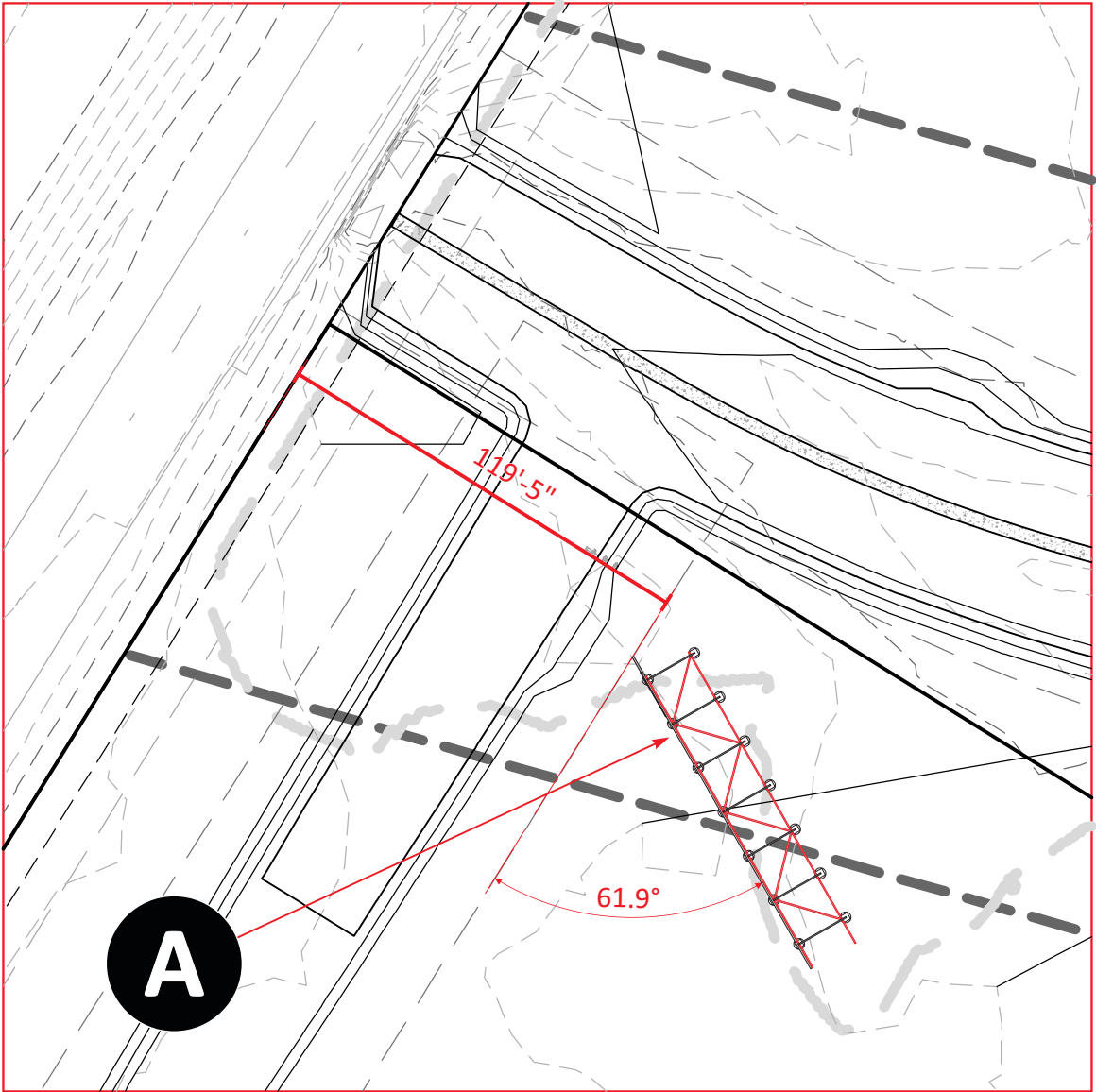
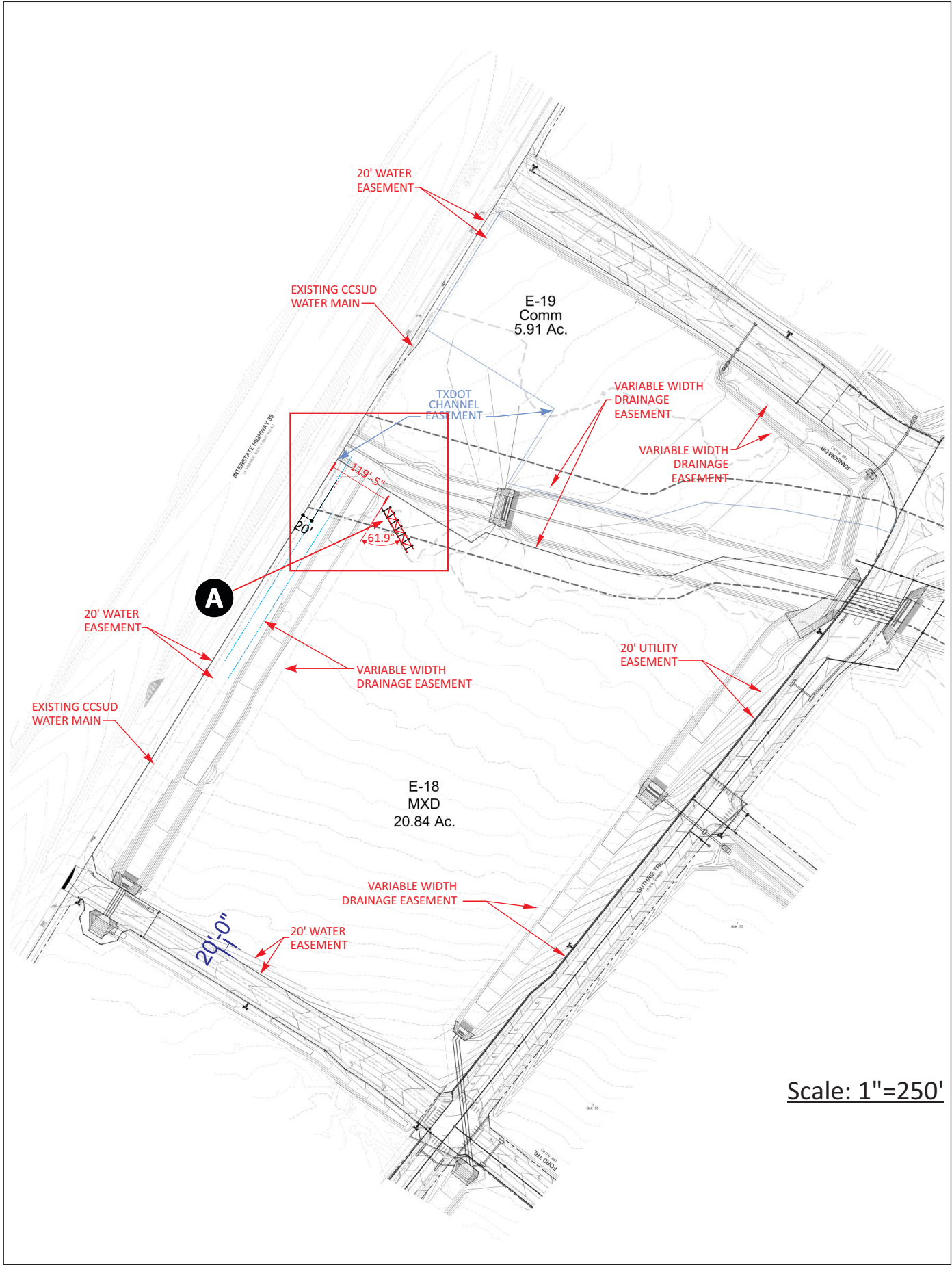
Please Note: architecture shown here is for diagram purposes only


New base structure to be designed and engineered to raise truss structure above parapet for ground level visibility

INSTALLED AT ROOF LEVEL

INSTALLED AT GROUND LEVEL







Design #

0633408Ar12

Sheet

3

of

13

Client

MAYFAIR

Address

Ih35 between Watson Ln.,
New Braunfels, TX

Account Rep.

STAN MACRUM
MELANIE DeLEON

Designer

TQ

Date

8/15/22

Approval / Date

Client

Sales

Estimating

Art

Engineering

Landlord

Revision/Date

R108-18-22BRC: add SMB Eng. calc's to design.

R209-07-22AP: Added more mfg. details per phone conference with D.M.

R202-08-23PA: Revised Letter Signs on frame structure with 2 Options - Option 1 - 5" deep open channel letters, redesigned with 3 rows of Contour LED's; Option 2 - FCO Alum. with 2" alum. angle perimeter at back for rigidity, external lighting by customer. Water Tower. Calculated & added center steel support & Plan. recalculated all piers as 48" dia. x 11' deep.

R0912023PA: Revised "M" Logo to read "MAYFAIR" 72" cdc around tower with 2 strokes of Contour LED's.

R0313023PA: Revised "B" Water Tower to have 2 Options: Opt 1 - 36" Base Center Pipe Support x 2 dia. x 20' deep Pier with (6) 8" x 8" sq. steel supports; Opt 2 - 36" Base Center Pipe Support x 5' dia. x 20' deep Pier with (4) 10" x 10" sq. steel supports. Showed artist's graphic at both options.

R0316023PA: Removed Opt. 1 & 2 from rendering on pg. 18; B - Opt. 1. Changed all letters to red, not multi-colored; B Opt 2 Removed Mural Graphic, changed all letters to red, not multicolored.

R0802023PA: Removed Option 2 - Non-H letters for sign "A"; Reduced "A" letter signage 25%, keeping same height framework, reducing number of support piers from 18 to 14; adjusted rendering on page 1 showing correct number rows of contour led tubing; updated site plan showing all signage approx. locations. (Note: Signs C1-C5 are on separate set R050504R1).

R3101023PA: Broke out Mockup plan of Letter "M".

R1101023PA: updated a site plan from customer.

R041115023PA: Updated site plan and showed 2 optional locations for sign A; Included Mockup lighting photo with approximate sign placement; photo survey studies; Removed sign B from package temporarily.

R041102023PA: Updated photo / renderings at sheets 5 & 7.;


R1102023PA: Deleted page 8.

R1102023PA: Corrected Option 1 sign location on Option-1 Photo-rendering Exhibits 1 & 2.

R101102023PA: Reduced sign structure height by eliminating a 7' frame section and also reducing the lower platform accordingly; (1104023PA: Added a square footage study showing each letter height x width and percentage of sign that is actual letter portion of sign.

R111207023PA: Kept Option 1 placement, deleted option 2; Changed The Faux Neon at "MAYFAIR" to be RGB Faux Neon

R12020124PA: Removed Sign Square footage calculations showing "Live Area"



CHANDLER
SIGNS

National Headquarters

14201 Sovereign Road #101
Fort Worth, TX 76155
(214) 902-2000 Fax (214) 902-2044

San Antonio

17319 San Pedro Avenue
Suite 200
San Antonio, TX 78232
(210) 349-3804 Fax (210) 349-8724

Northeast US

2301 River Road, Suite 201
Louisville, KY 40206
(502) 897-9800 Cell (502) 554-2575

Georgia


111 Woodstone Place
Dawsonville, GA 30534
(678) 725-8852 Fax (210) 349-8724

South Texas

PO BOX 125 206 Doral Drive
Portland, TX 78374
(961) 563-5599 Fax (361) 643-6533

This drawing is the property of
Chandler Signs, LLC
All rights to its use for reproduction
are reserved by Chandler Signs, LLC

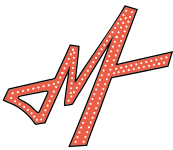
FINAL ELECTRICAL
CONNECTION BY
CUSTOMER



THIS SIGN IS INTENDED TO BE INSTALLED
IN ACCORDANCE WITH ARTICLE 600 OF THE
NATIONAL ELECTRICAL CODE AND/OR OTHER
APPLICABLE LOCAL CODES. THIS INCLUDES
PROPER GROUNDING & BONDING OF THE SIGN.
SIGN WILL BEAR UL LABEL(S).



EXHIBIT 1



Design #	
0633408Ar12	
Sheet	4 of 13
Client	
MAYFAIR	
Address	
lh35 between Watson Ln., New Braunfels, TX	
Account Rep.	STAN MACRUM MELANIE DeLEON
Designer	TQ
Date	8/15/22
Approval / Date	
Client	
Sales	
Estimating	
Art	
Engineering	
Landlord	
Revision/Date	
R1/08-18-22/BR: add SMB Eng. calc's to design. R2/09-07-22/PA: Added more mfg. details per phone conference with D.M. R3/23-08-23/PA: Revised Letter Signs on frame structure with 2 Options - Option 1 - 5" deep open channel letters, redesigned with 3 rows of Contour LEDs; Option 2: FCO Alum. with 2" alum. angle perimeter at back for repch. external lighting by customer. Water Tower. Calculated & added center steel support & Plan. recalculated all piers as 48" dia. x 11' deep. R3/12/23/PA: Revised "M" Logo to read "MAYFAIR" 72" odc around tower with 2 strokes of Contour LEDs. R4/31/23/PA: Revised "B" Water Tower to have 2 Options: Opt 1 - 36" Base Center Pipe Support x 5 dia. x 20' deep Pier with (4) 8" x 8" sq. steel supports; Opt 2 - 36" Base Center Pipe Support x 5 dia. x 20' deep Pier with (4) 10" x 10" sq. steel supports. Showed artist's graphic at both options. R4/31/23/PA: Removed Opt. 1 & 2 from rendering on pg. 18; B - Opt. 1. Changed all letters to red, not multi-colored; B Opt 2 Removed Mural Graphic, changed all letters to red, not multi-colored. R4/31/23/PA: Removed Option 2 - Non-H letters for sign "M"; Reduced "M" letter signage 25%, keeping same height framework, reducing number of support piers from 18 to 14; adjusted rendering on page 1 showing correct number rows of contour led tubing; updated site plan showing all signage approx. locations. (Note: Signs C1-C5 are on separate set R5/23/24/PA-1) R7/10/23/PA: Broke out Mockup plan of Letter "M"; (11/01/23/PA: updated a site plan from customer. R8/11/23/PA: Updated site plan and showed 2 optional locations for sign A; included Mockup targeting photo with approximate sign placement; photo survey studies; Removed sign B from package temporarily. R8/11/23/PA: Updated photo / renderings at sheets 5 & 7.; (11/22/23/PA: Deleted page 8. (11/29/23/PA: Corrected Option 1 sign location on Option-1 Photo-rendering Exhibits 1 & 2. R10/11/23/23/PA: Reduced sign structure height by eliminating a 7' frame section and also reducing the lower platform accordingly. (11/04/23/PA: Added a square footage study showing each letter height x width and percentage of sign that is actual letter portion of sign. R11/12/23/PA: Kept Option 1 placement, deleted option 2; Changed The Faux Neon at "MAYFAIR" to be RGB Faux Neon R12/20/24/PA: Removed Sign Square footage calculations showing "Live Area"	



National Headquarters	14201 Sovereign Road #101 Fort Worth, TX 76155 (214) 902-2000 Fax (214) 902-2044
	17319 San Pedro Avenue Suite 200 San Antonio, TX 78232 (210) 349-3804 Fax (210) 349-8724
Northeast US	2301 River Road, Suite 201 Louisville, KY 40206 (502) 897-9800 Cell (502) 554-2575
Georgia	111 Woodstone Place Dawsonville, GA 30534 (678) 725-8852 Fax (210) 349-8724
South Texas	PO BOX 125 206 Doral Drive Portland, TX 78374 (961) 363-5999 Fax (361) 643-6533

This drawing is the property of
Chandler Signs, LLC
All rights to its use for reproduction
are reserved by Chandler Signs, LLC

**FINAL ELECTRICAL
CONNECTION BY
CUSTOMER**

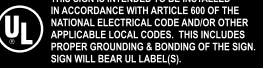
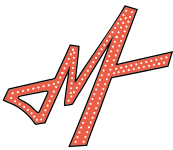




EXHIBIT 2



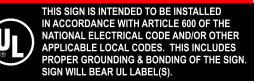
Design #	
0633408Ar12	
Sheet	5 of 13
Client	
MAYFAIR	
Address	
Ih35 between Watson Ln., New Braunfels, TX	
Account Rep.	STAN MACRUM MELANIE DeLEON
Designer	TQ
Date	8/15/22
Approval / Date	
Client	
Sales	
Estimating	
Art	
Engineering	
Landlord	
Revision/Date	
R1008-18-22(BR: add SMB Eng. calc's to design. R2009-07-22(PA: Added more mfg. details per phone conference with D.M. R3023-08-23(PA: Revised Letter Signs on frame structure with 2 Options - Option 1 - 5" deep open channel letters, redesigned with 3 rows of Contour LEDs; Option 2: FCO Alum. with 2" alum. angle perimeter all back for night, external lighting by customer. Water Tower. Calculated & added center steel support & Plat. recalculated all piers as 48" dia. x 11' deep. R091202(PA: Revised "M" Logo to read "MAYFAIR" 72" odc around tower all with 2 strokes of Contour LEDs. R0313023(PA: Revised "B" Water Tower to have 2 Options: Opt 1 - 36" Base Center Pipe Support x 5 dia x 20' deep Plat with (4) 8" x 8" sq. steel supports; Opt 2 - 36" Base Center Pipe Support x 5 dia x 20' deep Plat with (4) 10" x 10" sq. steel supports. Showed artist's graphic at both options. R0316023(PA: Removed Opt. 1 & 2 from rendering on pg. 18; B - Opt. 1: Changed all letters to red, not multi-colored; B Opt 2: Removed Mural Graphic, changed all letters to red, not multi-colored. R0602023(PA: Removed Option 2 - Non-H letters for sign "A"; Reduced "A" letter signage 25%, keeping same height framework, reducing number of support piers from 18 to 14; adjusted rendering on page 1 showing correct number rows of contour led tubing; updated site plan showing all signage approx. locations. (Note: Signs C1-C5 are on separate wo. R0502040-1). R31010123(PA: Broke out Mockup plan of Letter "M". R11010123(PA: updated a site plan from customer. R061115023(PA: Updated site plan and showed 2 optional locations for sign A; included Mockup targeting photo with appropriate sign placement; photo survey studies; Removed sign B from package temporarily. R061101023(PA: Updated photo / renderings at sheets 5 & 7.; R1102023(PA: Deleted page 8. R1102023(PA: Corrected Option 1 sign location on Option-1 Photo-rendering Exhibits 1 & 2. R101103023(PA: Reduced sign structure height by eliminating a 7' frame section and also reducing the lower platform accordingly. (10/4/23PA: Added a square footage study showing each letter height x width and percentage of sign that is actual letter portion of sign. R11120723(PA: Kept Option 1 placement; deleted option 2; Changed The Faux Neon at "MAYFAIR" to be FCB Faux Neon R12010124(PA: Removed Sign Square footage calculations showing "Live Area"	

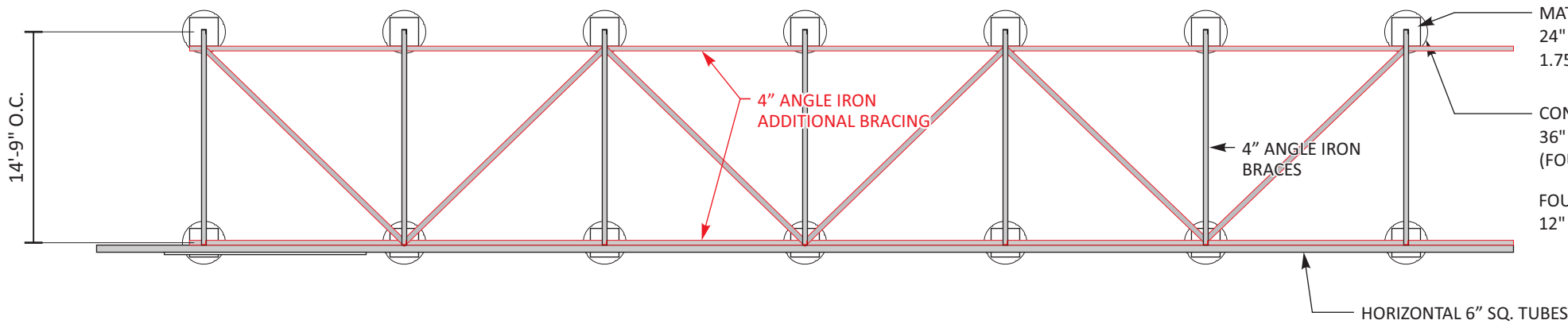


National Headquarters	14201 Sovereign Road #101 Fort Worth, TX 76155 (214) 902-2000 Fax (214) 902-2044
	17319 San Pedro Avenue Suite 200 San Antonio, TX 78232 (210) 349-3804 Fax (210) 349-8724
Northeast US	2301 River Road, Suite 201 Louisville, KY 40206 (502) 897-9800 Cell (502) 554-2575
Georgia	111 Woodstone Place Dawsonville, GA 30534 (678) 725-8852 Fax (210) 349-8724
South Texas	PO BOX 125 206 Doral Drive Portland, TX 78374 (961) 363-5999 Fax (361) 643-6533

This drawing is the property of
Chandler Signs, LLC
All rights to its use for reproduction
are reserved by Chandler Signs, LLC

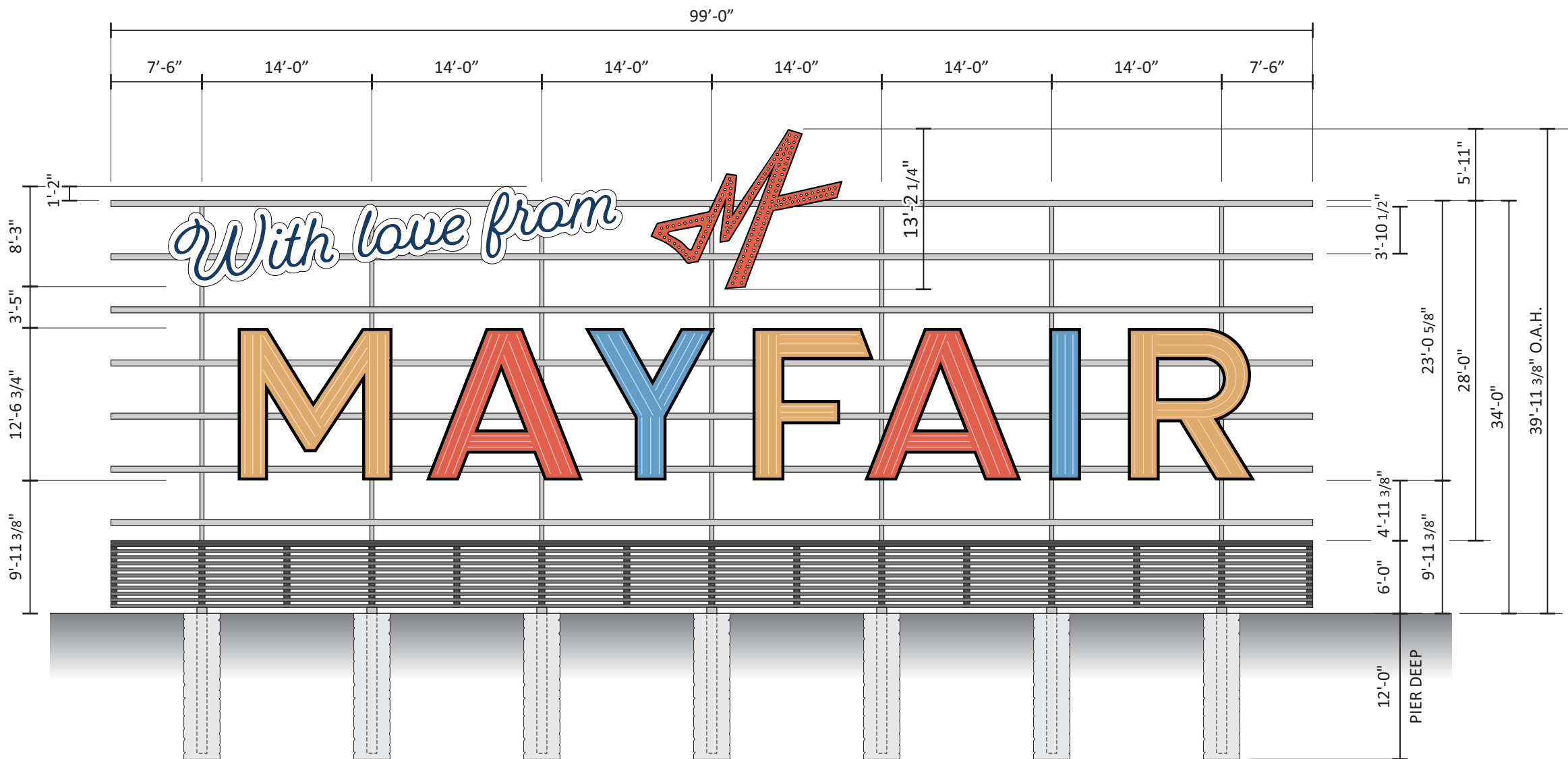
**FINAL ELECTRICAL
CONNECTION BY
CUSTOMER**





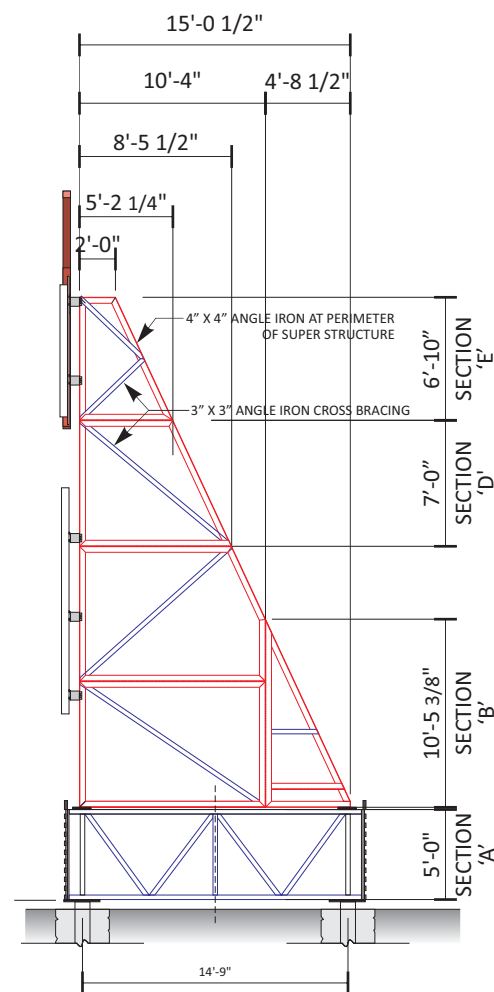
PLAN VIEW

SCALE: 3/32" = 1' - 0"



A MAIN SIGN I.D.
ONE [1] REQUIRED - MANUFACTURE & INSTALL

SCALE: 3/32" = 1' - 0"



NOTE: STAMPED ENGINEERING REQUIRED PRIOR TO FABRICATION



Design #

0633408Ar12

Sheet 6 of 13

Client

MAYFAIR

Address

Ih35 between Watson Ln.,
New Braunfels, TX

Account Rep. STAN MACRUM
MELANIE DeLEON

Designer TQ

Date 8/15/22

Approval / Date

Client	
Sales	
Estimating	
Art	
Engineering	
Landlord	

Revision/Date

R108-18-22BR	add SMB Eng. calc's to design.
R209-07-22PA	Added more mfg. details per phone conference with D.M.
R323-08-23PA	Revised Letter Signs on frame structure with 2 Options - Option 1 - 5" deep open channel letters, redesigned with 3 rows of Contour LEDs; Option 2 - FCO Alum. with 2" alum. angle perimeter all back for night, external lighting by customer. Water Tower. Calculated & added center steel support & Pier. recalculated all piers as 48" dia. x 11' deep.
R321-12-23PA	Revised "M" Logo to read "MAYFAIR" 72" c/c around tower with 2 stories of Contour LEDs.
R431-02-23PA	Revised "M" Water Tower to have 2 Options: Opt 1 - 36" Base Center Pipe Support x 5 dia. x 20' deep Pier with (4) 8" x 8" sq. steel supports; Opt 2 - 36" Base Center Pipe Support x 5 dia. x 20' deep Pier with (4) 10" x 10" sq. steel supports. Showed artist's graphic at both options.
R431-02-23PA	Removed Opt. 1 & 2 from rendering on pg. 18; B - Opt. 1. Changed all letters to red, not multi-colored; B Opt 2 Removed Metal Graphic, changed all letters to red, not multi-colored.
R462-02-23PA	Removed Option 2 - Non-H letters for sign "M". Reduced "M" letter signage 25%, keeping same height framework, reducing number of support piers from 18 to 14 adjusted rendering on page 1 showing correct number rows of contour led tubing; updated site plan showing all signage approx. locations. (Note: Signs C1-C5 are on separate w/ R462-02-23PA).
R3101-10-23PA	Broke out Mockup plan of Letter "M".
R1101-12-23PA	updated a site plan from customer.
R411-11-23PA	Updated site plan and showed 2 optional locations for sign A; Included Mockup lighting photos with approximate sign placement; photo survey studies; Removed sign B from package temporarily.
R411-12-23PA	Updated photo / renderings at sheets 5 & 7.;
R1122-02-23PA	Deleted page 8.
R1126-02-23PA	Corrected Option 1 sign location on Option-1 Photo-rendering Exhibits 1 & 2.
R1111-12-23PA	Reduced sign structure height by eliminating a 7' frame section and also reducing the lower platform accordingly; (1104-02-23PA) Added a square footage study showing each letter height x width and percentage of sign that is actual letter portion of sign.
R1112-07-23PA	Kept Option 1 placement; deleted option 2; Changed The Faux Neon at "MAYFAIR" to be RGB Faux Neon
R12201-12-24PA	Removed Sign Square footage calculations showing "Live Area"



National Headquarters	14201 Sovereign Road #101 Fort Worth, TX 76155 (214) 902-2000 Fax (214) 902-2044
San Antonio	17319 San Pedro Avenue Suite 200 San Antonio, TX 78232 (210) 349-3804 Fax (210) 349-8724
Northeast US	2301 River Road, Suite 201 Louisville, KY 40206 (502) 897-9800 Cell (502) 554-2575
Georgia	111 Woodstone Place Dawsonville, GA 30534 (678) 725-8852 Fax (210) 349-8724
South Texas	PO BOX 125 206 Doral Drive Portland, TX 78374 (961) 563-5599 Fax (361) 643-6533

This drawing is the property of
Chandler Signs, LLC
All rights to its use for reproduction
are reserved by Chandler Signs, LLC

FINAL ELECTRICAL
CONNECTION BY
CUSTOMER

THIS SIGN IS INTENDED TO BE INSTALLED
IN ACCORDANCE WITH ARTICLE 600 OF THE
NATIONAL ELECTRICAL CODE AND/OR OTHER
APPLICABLE LOCAL CODES. THIS INCLUDES
PROPER GROUNDING & BONDING OF THE SIGN.
SIGN WILL BEAR UL LABEL(S).



Design #	
0633408Ar12	
Sheet	7 of 13
Client	
MAYFAIR	
Address	
lh35 between Watson Ln., New Braunfels, TX	
Account Rep.	STAN MACRUM MELANIE DeLEON
Designer	TQ

Date 8/15/22

Approval / Date	
Client	
Sales	
Estimating	
Art	
Engineering	
Landlord	

Revision/Date	
R1/08-18-22/R: add SMB Eng. calc's to design.	
R2/09-07-22/PK: Added more mfg. details per phone conference with D.M.	
R3/23-08-23/PK: Revised Letter Signs on frame structure with 2 Options - Option 1 - 5" deep open channel letters, redesigned with 3 rows of Contour LEDs; Option 2: FCO Alum. with 2" alum. angle perimeter all back for uplight, external lighting by customer. Water Tower. Calculated & added center steel support & Plan. recalculated all piers as 48" dia. x 11' deep.	
R3/12/23/PK: Revised "M" Logo to read "MAYFAIR" 72" odc around tower all with 2 strokes of Contour LEDs.	
R4/31/23/PK: Revised "B" Water Tower to have 2 Options: Opt 1 - 36" Base Center Pipe Support x 5 dia. x 20' deep Pier with (4) 8" x 8" sq. steel supports; Opt 2 - 36" Base Center Pipe Support x 9 dia. x 20' deep Pier with (4) 10" x 10" sq. steel supports. Showed artist's graphic at both regions.	
R5/3/16/23/PK: Removed Opt. 1 & 2 from rendering on pg. 18; B - Opt. 1. Changed all letters to red, not multi-colored; B Opt 2 Removed Mural Graphic, changed all letters to red, not multi-colored.	
R6/6/23/23/PK: Removed Option 2 - Non-H letters for sign "A"; Reduced "A" letter signage 25%, keeping same height framework, reducing number of support piers from 18 to 14; adjusted rendering on page 1 showing correct number rows of contour led tubing; updated site plan showing all signage approx. locations. (Note: Signs C1-C5 are on separate w/ R6/23/24/R1).	
R7/10/12/23/PK: Broke out Mockup plan of Letter "M".	
R11/01/23/PK: updated a site plan from customer.	
R6/11/15/23/PK: Updated site plan and showed 2 optional locations for sign A; Included Mockup targeting photos with approximate sign placements photo survey studies; Removed sign B from package temporarily.	
R6/11/12/23/PK: Updated photo / renderings at sheets 5 & 7.;	
R12/22/23/PK: Deleted page 8.	
R12/26/23/PK: Corrected Option 1 sign location on Option-1 Photo-rendering Exhibits 1 & 2.	
R13/11/30/23/PK: Reduced sign structure height by eliminating a 7' frame section and also reducing the lower platform accordingly. (1/24/23/PK: Added a square footage study showing each letter height x width and percentage of sign that is actual letter portion of sign.	
R11/12/07/23/PK: Kept Option 1 placement, deleted option 2; Changed The Faux Neon at "MAYFAIR" to be RGB Faux Neon	
R12/20/24/PK: Removed Sign Square footage calculations showing "Live Area"	



National Headquarters	14201 Sovereign Road #101 Fort Worth, TX 76155 (214) 902-2000 Fax (214) 902-2044
	17319 San Pedro Avenue Suite 200 San Antonio, TX 78232 (210) 349-3804 Fax (210) 349-8724
Northeast US	2301 River Road, Suite 201 Louisville, KY 40206 (502) 897-9800 Cell (502) 554-2575
Georgia	111 Woodstone Place Dawsonville, GA 30534 (678) 725-8852 Fax (210) 349-8724
South Texas	PO BOX 125 206 Doral Drive Portland, TX 78374 (961) 563-5999 Fax (361) 643-6533

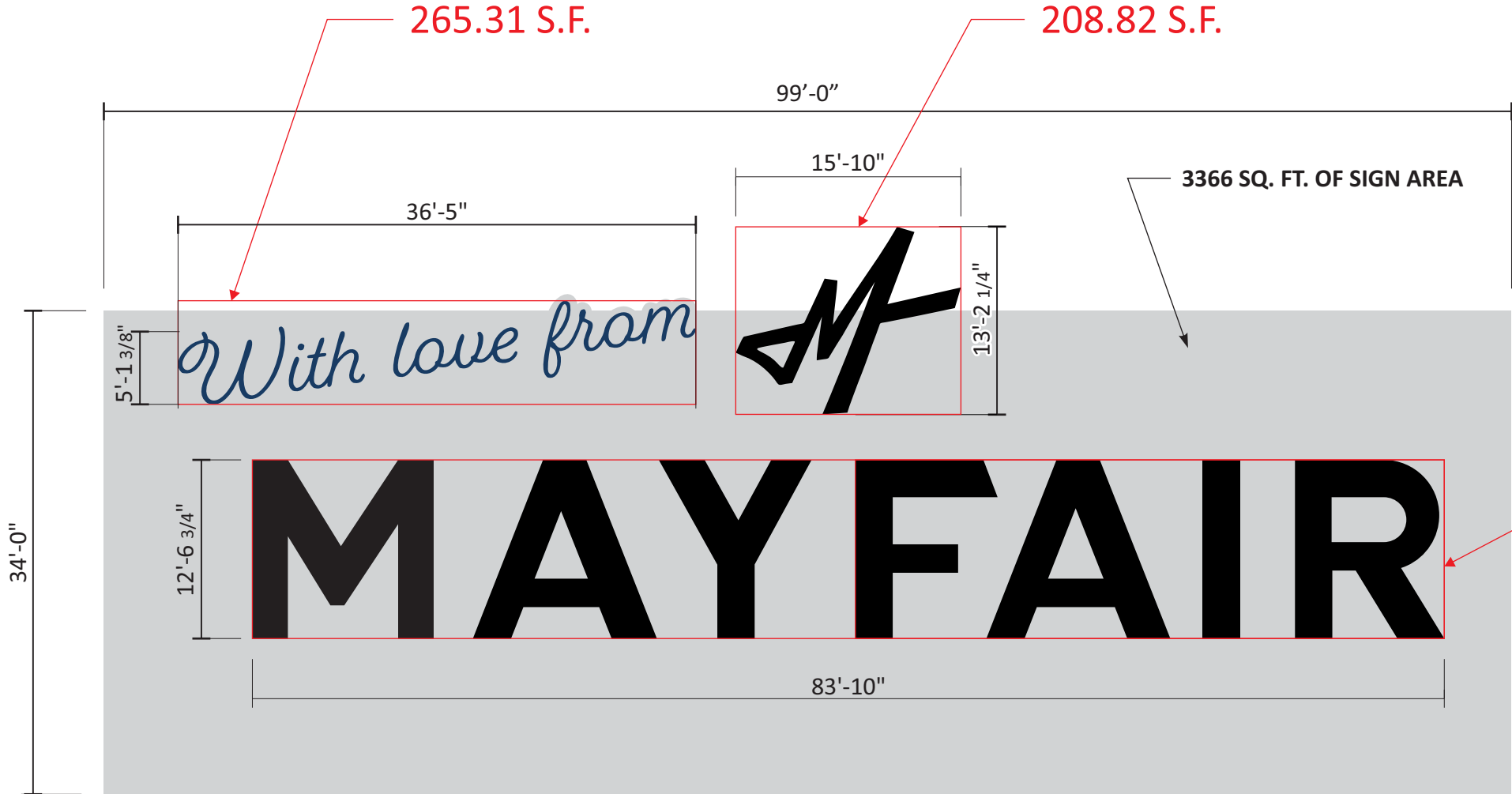
This drawing is the property of Chandler Signs, LLC
All rights to its use for reproduction are reserved by Chandler Signs, LLC

FINAL ELECTRICAL CONNECTION BY CUSTOMER

THIS SIGN IS INTENDED TO BE INSTALLED IN ACCORDANCE WITH ARTICLE 600 OF THE NATIONAL ELECTRICAL CODE AND/OR OTHER APPLICABLE LOCAL CODES. THIS INCLUDES PROPER GROUNDING & BONDING OF THE SIGN. SIGN WILL BEAR UL LABEL(S).

265.31 S.F. - WITH LOVE FROM
208.82 S.F. - M
1053.15 S.F. - MAYFAIR

1527.28 S.F. - TOTAL



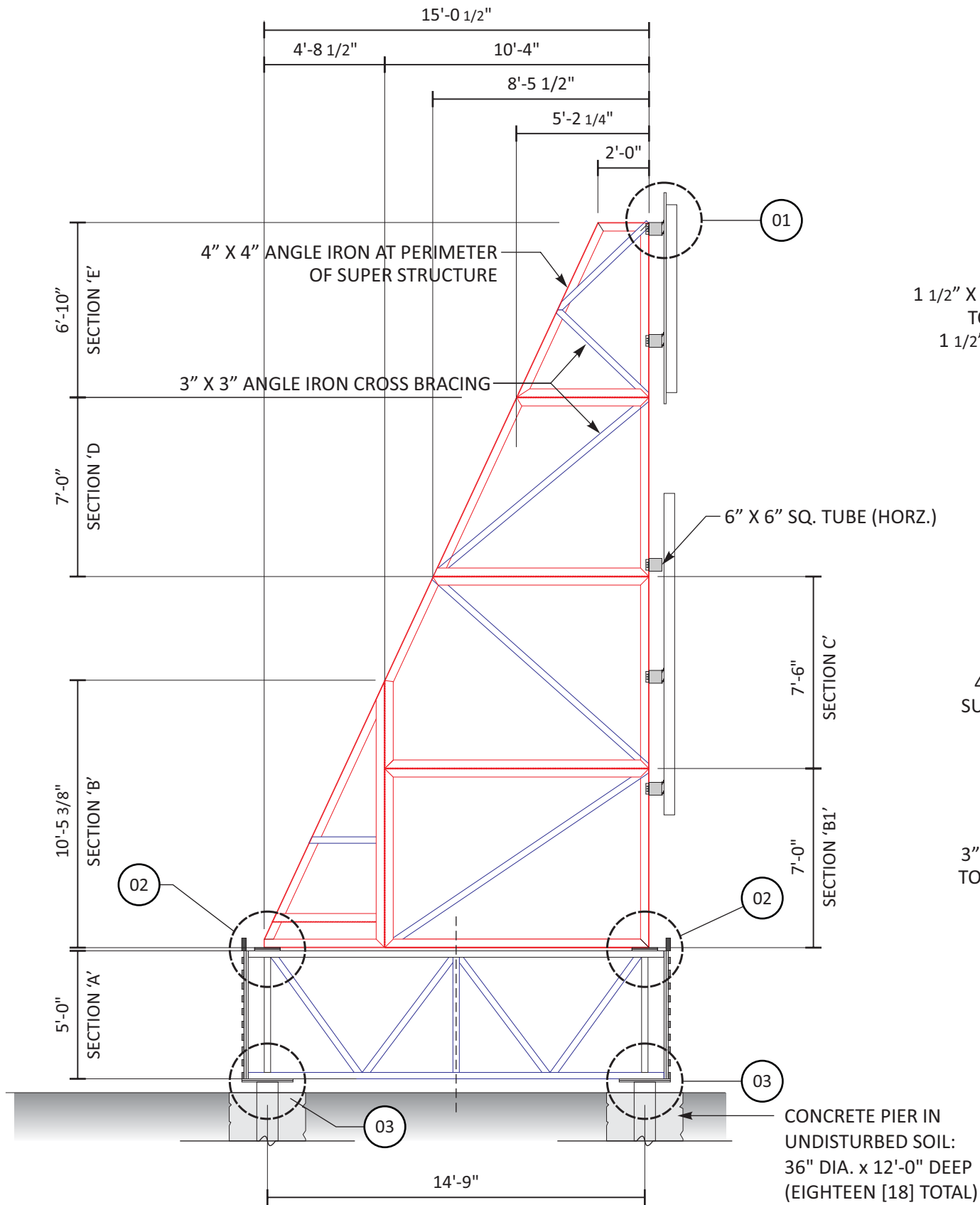
1053.15 S.F.

45.37% OF SIGN AREA IS ACTUAL LETTERING

A LETTER SIGNAGE - SQUARE FOOTAGE CALCULATIONS

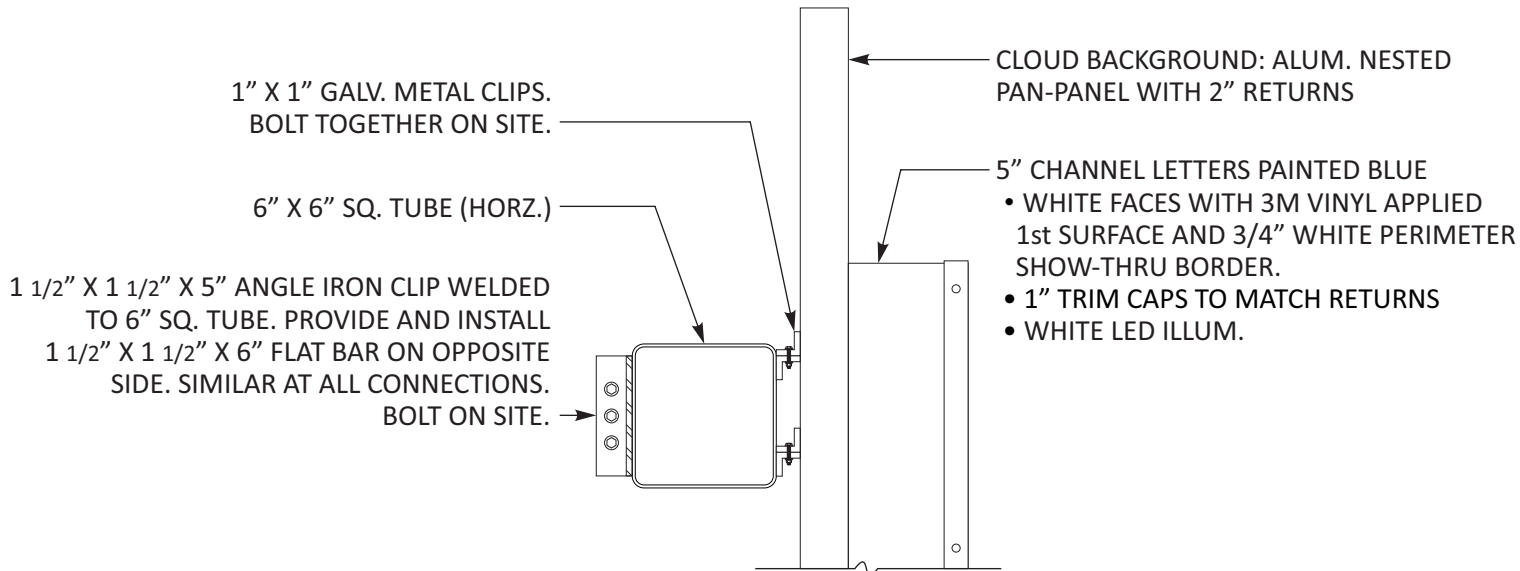
SCALE: 3/32" = 1' - 0"

1527.28 S.F. - TOTAL



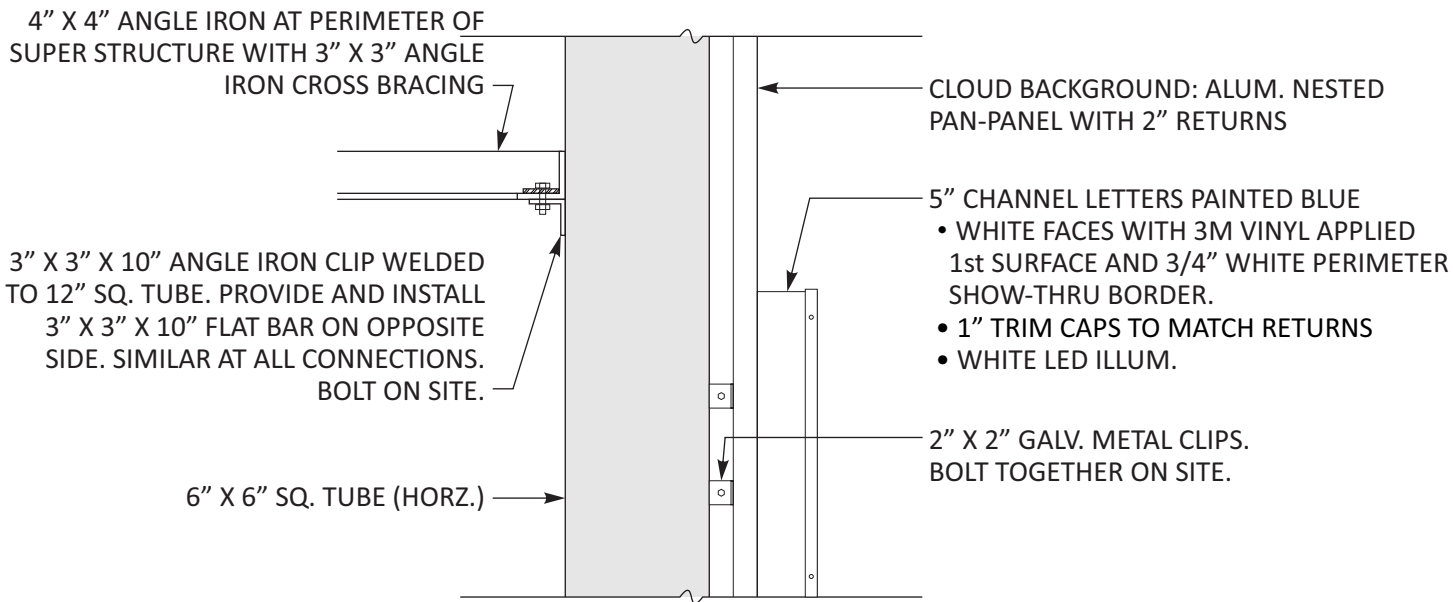
SECTION DETAIL AT GROUND LEVEL

SCALE: 3/16" = 1' - 0"



SECTION DETAIL

SCALE: 1 1/2" = 1' - 0"



PLAN VIEW

SCALE: 3/4" = 1' - 0"

Design #

0633408Ar12

Sheet 8 of 13

Client

MAYFAIR

Address

Ih35 between Watson Ln.,
New Braunfels, TX

Account Rep.

STAN MACRUM
MELANIE DeLEON

Designer

TQ

Date

8/15/22

Approval / Date

Client

Sales

Estimating

Art

Engineering

Landlord

Revision/Date

R1/08-18-22(BR) add SMB Eng. calc's to design.

R2/09-07-22(PA) Added more mfg. details per phone conference with D.M.

R3/23-08-23(PA) Revised Letter Signs on frame structure with 2 Options - Option 1 - 5" deep open channel letters, redesigned with 3 rows of Contour LED's; Option 2 - FCO Alum. with 2" alum. angle perimeter all back for rigidity, external lighting by customer. Water Tower. Calculated & added center steel support & Plan. recalculated all piers as 48" dia. x 11' deep.

R3/12/23(PA) Revised "M" Logo to read "MAYFAIR" 72" cdc around tower with 2 strokes of Contour LED's.

R4/31/23(PA) Revised "B" Water Tower to have 2 Options: Opt 1 - 36" Base Center Pipe Support x 5 dia. x 20' deep Pier with (4) 8" x 8" sq. steel supports; Opt 2 - 36" Base Center Pipe Support x 5 dia. x 20' deep Pier with (4) 10" x 10" sq. steel supports. Showed artist's graphic at both options.

R5/2/23(PA) Removed Opt. 1 & 2 from rendering on pg. 18; B - Opt. 1. Changed all letters to red, not multi-colored; B Opt 2 Removed Mutual Graphic, changed all letters to red, not multicolored.

R6/2/23(PA) Removed Option 2 - Non-H letters for sign "A"; Reduced "A" letter signage 25%, keeping same height framework, reducing number of support piers from 18 to 14; adjusted rendering on page 1 showing correct number rows of contour led tubing; updated site plan showing all signage approx. locations. (Note: Signs C1-C5 are on separate two R6/2/23(PA) R1).

R7/10/23(PA) Broke out Mockup plan of Letter "M".

R11/01/23(PA) updated a site plan from customer.

R8/11/23(PA) Updated site plan and showed 2 optional locations for sign A; Included Mockup lighting photos with approximate sign placement; photo survey studies; Removed sign B from package temporarily.

R9/11/23(PA) Updated photo / renderings at sheets 5 & 7.;

R10/22/23(PA) Deleted page 8.

R11/29/23(PA) Connected Option 1 sign location on Option-1 Photo-rendering Exhibits 1 & 2.

R12/11/23(PA) Reduced sign structure height by eliminating a 7' frame section and also reducing the lower platform accordingly; R12/04/23(PA) Added a square footage study showing each letter height x width and percentage of sign that is actual letter portion of sign.

R11/12/07/23(PA) Kept Option 1 placement; deleted option 2; Changed The Faux Neon at "MAYFAIR" to be RGB Faux Neon

R12/20/24(PA) Removed Sign Square footage calculations showing "Live Area"

CHANDLER
SIGNS

National Headquarters

14201 Sovereign Road #101
Fort Worth, TX 76155
(214) 902-2000 Fax (214) 902-2044

San Antonio

17319 San Pedro Avenue
Suite 200
San Antonio, TX 78232
(210) 349-3804 Fax (210) 349-8724

Northeast US

2301 River Road, Suite 201
Louisville, KY 40206
(502) 897-9800 Cell (502) 554-2575

Georgia

111 Woodstone Place
Dawsonville, GA 30534
(678) 725-8852 Fax (210) 349-8724

South Texas

PO BOX 125 206 Doral Drive
Portland, TX 78374
(961) 563-5599 Fax (361) 643-6533

This drawing is the property of
Chandler Signs, LLC
All rights to its use for reproduction
are reserved by Chandler Signs, LLC

FINAL ELECTRICAL
CONNECTION BY
CUSTOMER

UL

THIS SIGN IS INTENDED TO BE INSTALLED
IN ACCORDANCE WITH ARTICLE 600 OF THE
NATIONAL ELECTRICAL CODE AND/OR OTHER
APPLICABLE LOCAL CODES. THIS INCLUDES
PROPER GROUNDING & BONDING OF THE SIGN.
SIGN WILL BEAR UL LABEL(S).



Design #

0633408Ar12

Sheet 9 of 13

Client

MAYFAIR

Address

Ih35 between Watson Ln.,
New Braunfels, TX

Account Rep. STAN MACRUM
MELANIE DeLEON

Designer TQ

Date 8/15/22

Approval / Date

Client	
Sales	
Estimating	
Art	
Engineering	
Landlord	

Revision/Date

R1/08-18-22/R: add SMB Eng. calc's to design.
R2/09-07-22/PK: Added more mfg. details per phone conference with D.M.
R3/23-08-23/PK: Revised Letter Signs on frame structure with 2 Options - Option 1 - 5" deep open channel letters, redesigned with 3 rows of Contour LED's; Option 2: FCO Alum. with 2" alum. angle perimeter all back for rigidity, external lighting by customer. Water Tower. Calculated & added center steel support & Plan. recalculated all piers as 48" dia. x 11' deep.
R3/12/23/PK: Revised "MF" Logo to read "MAYFAIR" 72" cdc around tower all with 2 strokes of Contour LED's.
R4/31/23/PK: Revised "Water Tower" to have 2 Options: Opt 1 - 36" Base Center Pipe Support x 5 dia. x 20' deep Pier with (4) 8" x 8" sq. steel supports; Opt 2 - 36" Base Center Pipe Support x 5 dia. x 20' deep Pier with (4) 10" x 10" sq. steel supports. Showed artist's graphic at both options.
R5/2/16/23/PK: Removed Opt. 1 & 2 from rendering on pg. 18; B - Opt. 1: Changed all letters to red, not multi-colored; B Opt 2: Removed Metal Graphic, changed all letters to red, not multi-colored.
R6/6/23/23/PK: Removed Option 2 - Non-H letters for sign "A"; Reduced "A" letter signage 25%, keeping same height framework, reducing number of support piers from 18 to 14; adjusted rendering on page 1 showing correct number rows of contour led tubing; updated site plan showing all signage approx. locations. (Note: Signs C1-C5 are on separate two R6/23/24/1).
R7/10/12/23/PK: Broke out Mockup plan of Letter "M".
R11/01/23/PK: updated a site plan from customer.
R8/11/15/23/PK: Updated site plan and showed 2 optional locations for sign A; Included Mockup targeting photo with approximate sign placement; photo survey studies; Removed sign B from package temporarily.
R9/11/23/23/PK: Updated photo / renderings at sheets 5 & 7.;
R10/22/23/PK: Deleted page 8.
R11/26/23/PK: Corrected Option 1 sign location on Option-1 Photo-rendering Exhibits 1 & 2.
R12/11/23/23/PK: Reduced sign structure height by eliminating a 7' frame section and also reducing the lower platform accordingly. (1/24/23/PK: Added a square footage study showing each letter height x width and percentage of sign that is actual letter portion of sign.
R11/12/07/23/PK: Kept Option 1 placement, deleted option 2; Changed The Faux Neon at "MAYFAIR" to be RGB Faux Neon
R12/20/12/24/PK: Removed Sign Square footage calculations showing "Live Area"



National Headquarters 14201 Sovereign Road #101
Fort Worth, TX 76155
(214) 902-2000 Fax (214) 902-2044

San Antonio 17319 San Pedro Avenue
Suite 200
San Antonio, TX 78232
(210) 349-3804 Fax (210) 349-8724

Northeast US 2301 River Road, Suite 201
Louisville, KY 40206
(502) 897-9800 Cell (502) 554-2575

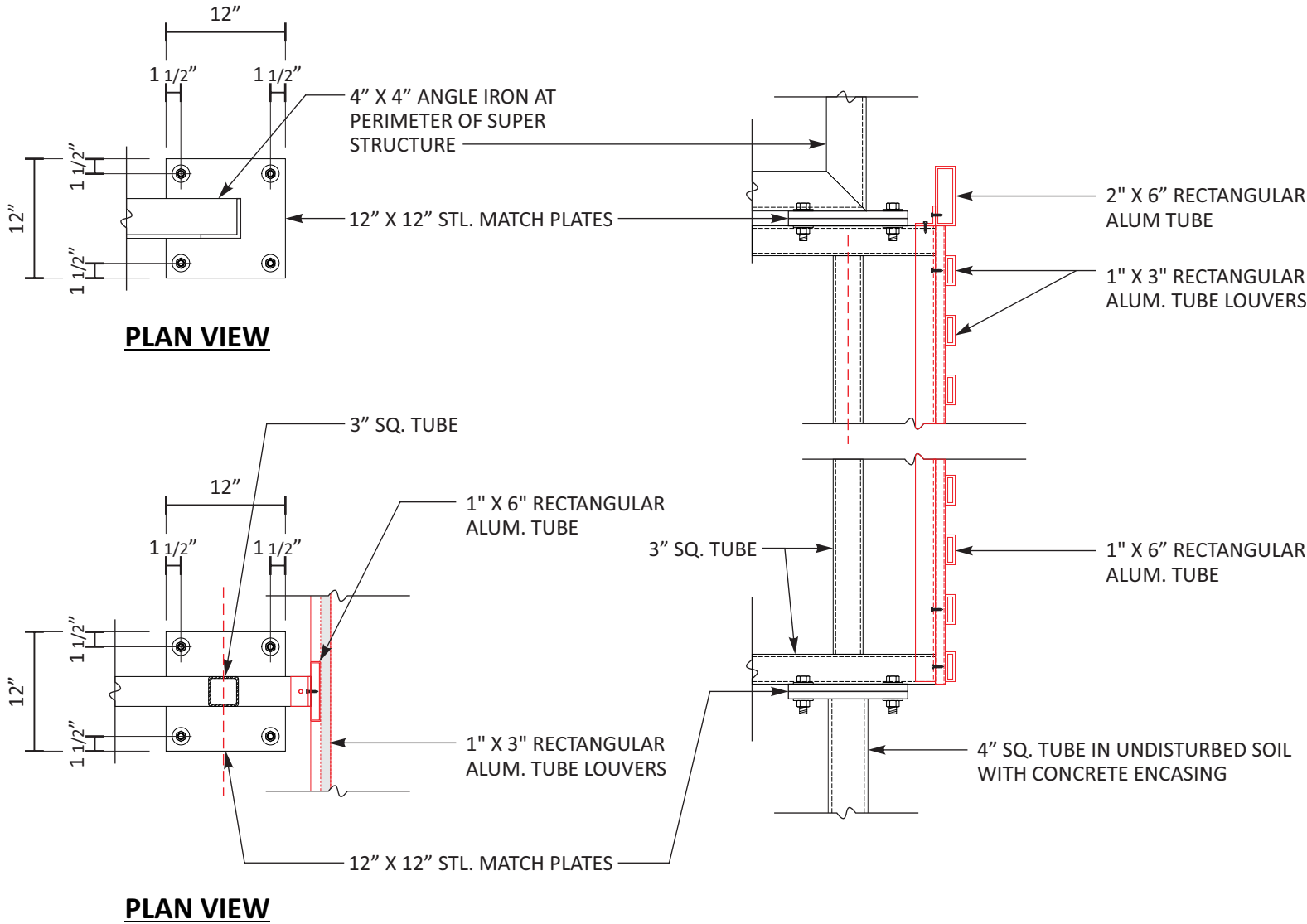
Georgia 111 Woodstone Place
Dawsonville, GA 30534
(678) 725-8852 Fax (210) 349-8724

South Texas PO BOX 125 206 Doral Drive
Portland, TX 78374
(961) 563-5999 Fax (361) 643-6533

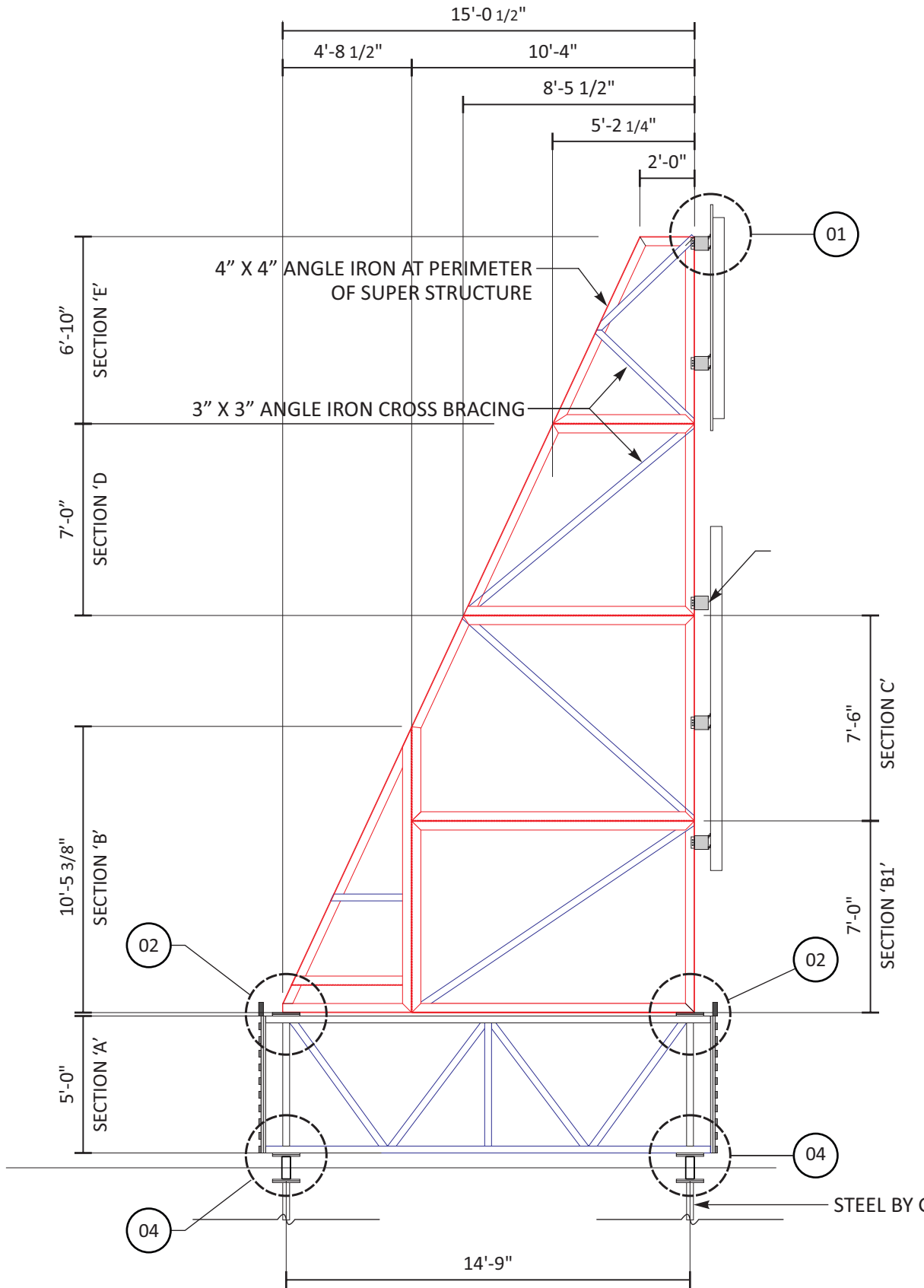
This drawing is the property of
Chandler Signs, LLC
All rights to its use for reproduction
are reserved by Chandler Signs, LLC

FINAL ELECTRICAL
CONNECTION BY
CUSTOMER

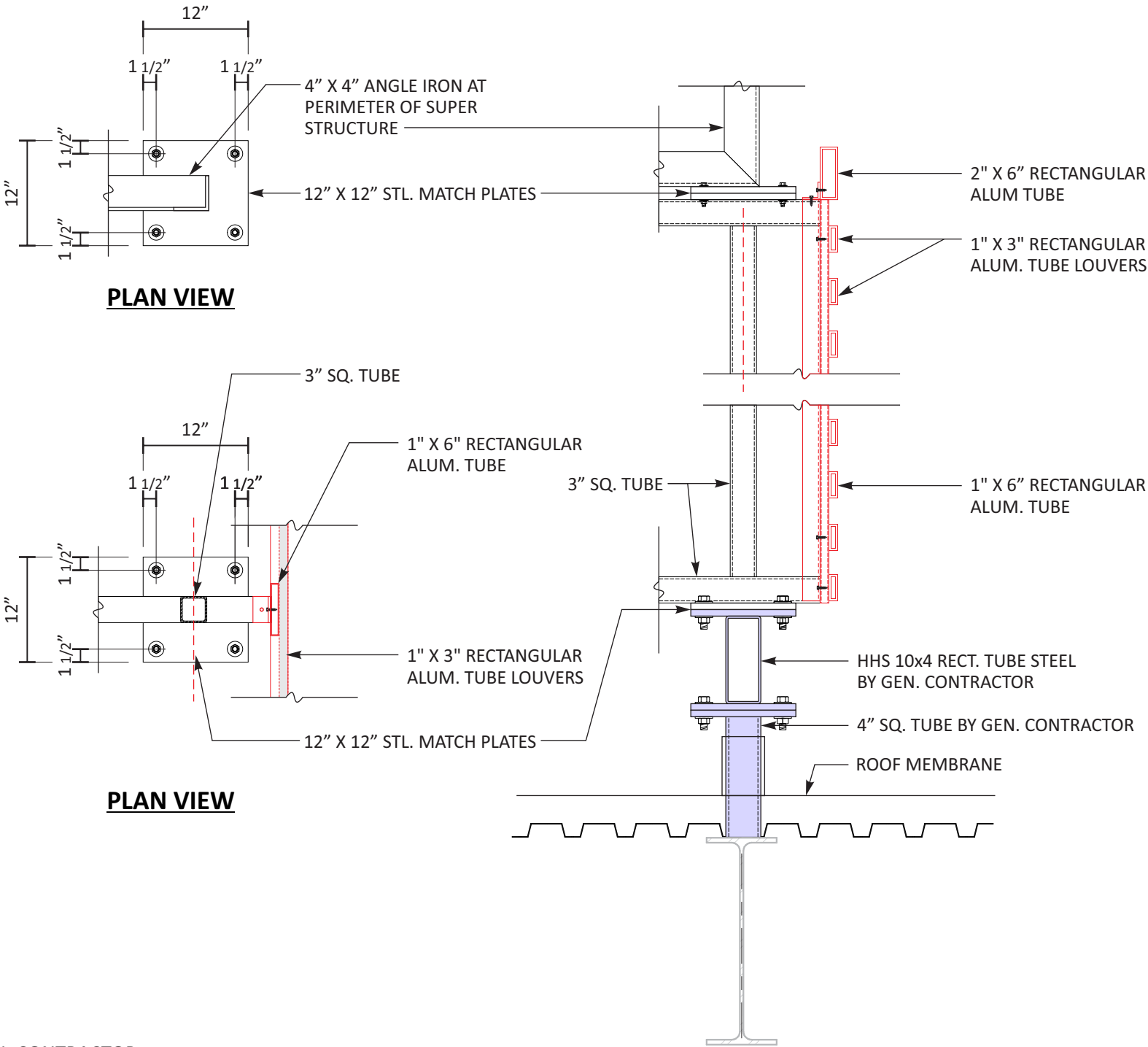
THIS SIGN IS INTENDED TO BE INSTALLED
IN ACCORDANCE WITH ARTICLE 600 OF THE
NATIONAL ELECTRICAL CODE AND/OR OTHER
APPLICABLE LOCAL CODES. THIS INCLUDES
PROPER GROUNDING & BONDING OF THE SIGN.
SIGN WILL BEAR UL LABEL(S).



02 03 CONNECTION DETAILS AT GROUND LEVEL SCALE: 3/4" = 1' - 0"



SECTION DETAIL AT ROOF LEVEL
SCALE: 3/16" = 1' - 0"



CONNECTION DETAILS AT ROOF
SCALE: 3/4" = 1' - 0"

Design #

0633408Ar12

Sheet

10 of 13

Client

MAYFAIR

Address

Ih35 between Watson Ln.,
New Braunfels, TX

Account Rep.

STAN MACRUM
MELANIE DeLEON

Designer

TQ

Date

8/15/22

Approval / Date

Client

Sales

Estimating

Art

Engineering

Landlord

Revision/Date

R108-18-22(BR: add SMB Eng. calc's to design.
R209-07-22(PA: Added more mfg. details per phone conference with D.M.
R323-08-23(PA: Revised Letter Signs on frame structure with 2 Options - Option 1 - 5" deep open channel letters, redesigned with 3 rows of Contour LEDs; Option 2 - FCO Alum. with 2" alum. angle perimeter all back for repick, external lighting by customer. Water Tower. Calculated & added center steel support & Plan. recalculated all piers as 48" dia. x 11' deep.
R321-12(PA: Revised "M" Logo to read "MAYFAIR" 72" odc around tower with 2 strokes of Contour LEDs.
R431-02(PA: Revised "B" Water Tower to have 2 Options: Opt 1 - 36" Base Center Pipe Support x 5 dia. x 20' deep Pier with (4) 8" x 8" sq. steel supports; Opt 2 - 36" Base Center Pipe Support x 5 dia. x 20' deep Pier with (4) 10" x 10" sq. steel supports. Showed artist's graphic at both regions.
R431-02(PA: Removed Opt. 1 & 2 from rendering on pg. 18; B - Opt. 1. Changed all letters to red, not multi-colored; B Opt 2 Removed Mural Graphic, changed all letters to red, not multi-colored.
R462-02(PA: Removed Option 2 - Non-H letters for sign "A"; Reduced "A" letter signage 25%, keeping same height framework, reducing number of support piers from 18 to 14; adjusted rendering on page 1 showing correct number rows of contour led tubing; updated site plan showing all signage approx. locations. (Note: Signs C1-C5 are on separate set R6352404r1).
R3101-12(PA: Broke out Mockup plan of Letter "M".
R1101-02(PA: updated a site plan from customer.
R411-15(PA: Updated site plan and showed 2 optional locations for sign A; Included Mockup targeting photos with approximate sign placement; photo survey studies; Removed sign B from package temporarily.
R411-15(PA: Updated photo / renderings at sheets 5 & 7.;
R122-02(PA: Deleted page 8.
R122-02(PA: Corrected Option 1 sign location on Option-1 Photo-rendering Exhibits 1 & 2.
R1101-12(PA: Reduced sign structure height by eliminating a 7' frame section and also reducing the lower platform accordingly. (10/4/23PA: Added a square footage study showing each letter height x width and percentage of sign that is actual letter portion of sign.
R1112-07(PA: Kept Option 1 placement, deleted option 2; Changed The Faux Neon at "MAYFAIR" to be RGB Faux Neon
R122-01(PA: Removed Sign Square footage calculations showing "Live Area"



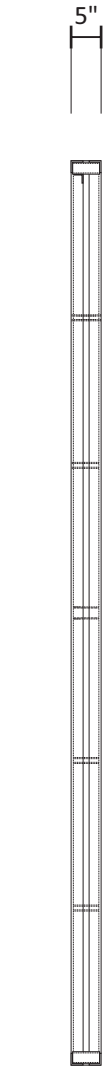
National Headquarters	14201 Sovereign Road #101 Fort Worth, TX 76155 (214) 902-2000 Fax (214) 902-2044
	17319 San Pedro Avenue Suite 200 San Antonio, TX 78232 (210) 349-3804 Fax (210) 349-8724
Northeast US	2301 River Road, Suite 201 Louisville, KY 40206 (502) 897-9800 Cell (502) 554-2575
Georgia	111 Woodstone Place Dawsonville, GA 30534 (678) 725-8852 Fax (210) 349-8724
South Texas	PO BOX 125 206 Doral Drive Portland, TX 78374 (961) 563-5599 Fax (361) 643-6533

This drawing is the property of
Chandler Signs, LLC
All rights to its use for reproduction
are reserved by Chandler Signs, LLC

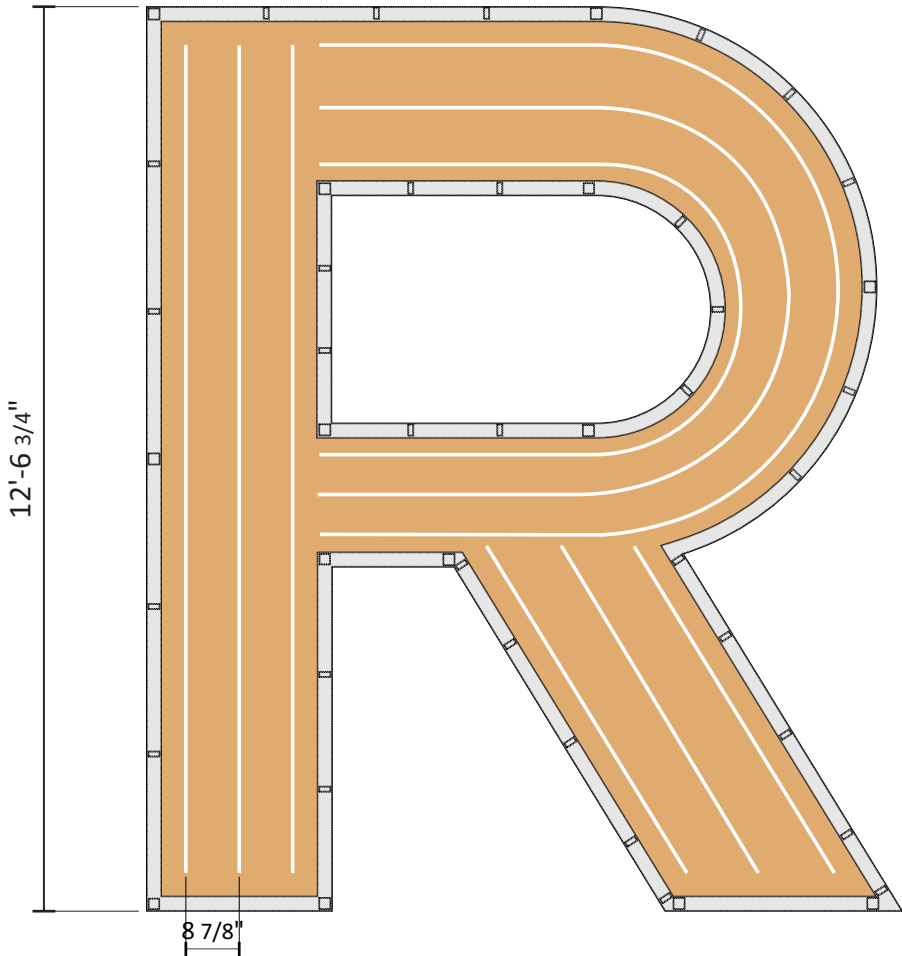
FINAL ELECTRICAL
CONNECTION BY
CUSTOMER

THIS SIGN IS INTENDED TO BE INSTALLED
IN ACCORDANCE WITH ARTICLE 600 OF THE
NATIONAL ELECTRICAL CODE AND/OR OTHER
APPLICABLE LOCAL CODES. THIS INCLUDES
PROPER GROUNDING & BONDING OF THE SIGN.
SIGN WILL BEAR UL LABEL(S).



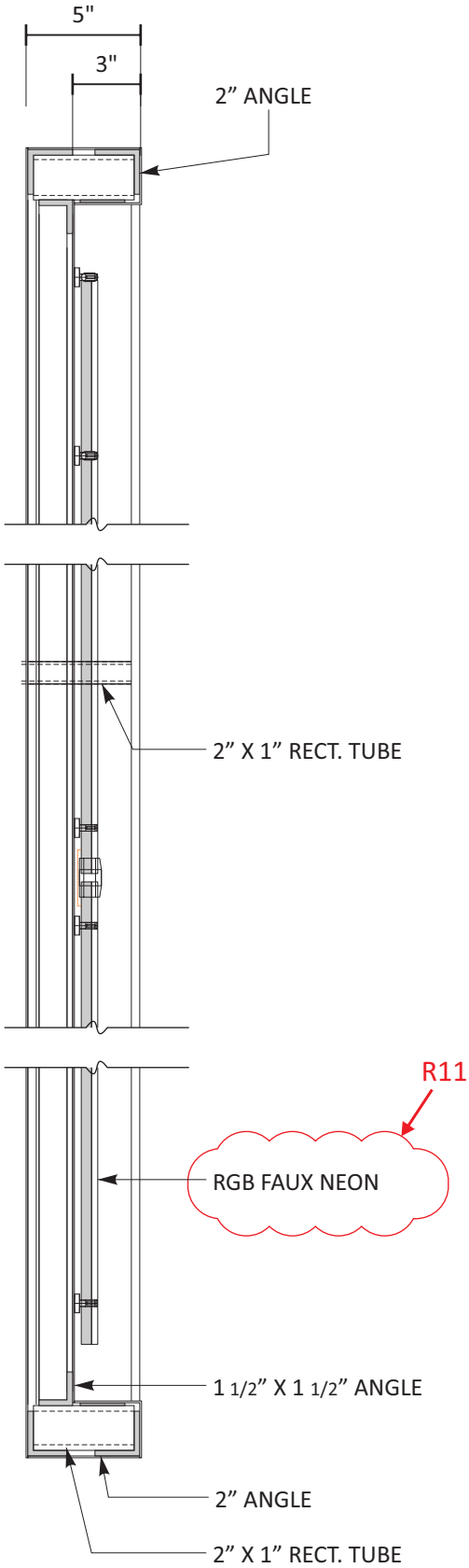


END VIEW



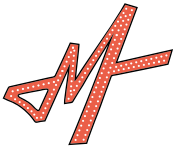
05 OCL - ELEV.

SCALE: 3/8" = 1' - 0"



06 SECTION DETAIL

SCALE: 1 1/2" = 1' - 0"



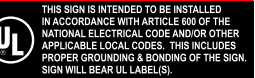
Design #	
0633408Ar12	
Sheet	11 of 13
Client	
MAYFAIR	
Address	
lh35 between Watson Ln., New Braunfels, TX	
Account Rep.	STAN MACRUM MELANIE DeLEON
Designer	TQ
Date	8/15/22
Approval / Date	
Client	
Sales	
Estimating	
Art	
Engineering	
Landlord	
Revision/Date	
R108-18-22(BR: add SMB Eng. calc's to design. R509-07-22(PA: Added more mfg. details per phone conference with D.M. R302-08-23(PA: Revised Letter Signs on frame structure with 2 Options - Option 1 - 5" deep open channel letters, redesigned with 3 rows of Contour LEDs; Option 2: FCO Alum. with 2" alum. angle perimeter all back for rigidity, external lighting by customer. Water Tower. Calculated & added center steel support & Plan. recalculated all piers as 48" dia. x 11' deep. R09120(PA: Revised "M" Logo to read "MAYFAIR" 72" odc around tower all with 2 strokes of Contour LEDs. R03130(PA: Revised "B" Water Tower to have 2 Options: Opt 1 - 36" Base Center Pipe Support x 5 dia. x 20' deep Pier with (4) 8" x 8" sq. steel supports; Opt 2 - 36" Base Center Pipe Support x 5 dia. x 20' deep Pier with (4) 10" x 10" sq. steel supports. Showed artist's graphic at both regions. R03160(PA: Removed Opt. 1 & 2 from rendering on pg. 18; B - Opt. 1: Changed all letters to red, not multi-colored; B Opt 2: Removed Mural Graphic, changed all letters to red, not multicolored. R06030(PA: Removed Option 2 - Non-H letters for sign "A"; Reduced "A" letter signage 25%, keeping same height framework, reducing number of support piers from 18 to 14; adjusted rendering on page 1 showing correct number rows of contour led tubing; updated site plan showing all signage approx. locations. (Note: Signs C1-C5 are on separate two R06030A(1). R31010120(PA: Broke out Mockup plan of Letter "M". R11010120(PA: updated a site plan from customer. R0411150(PA: Updated site plan and showed 2 optional locations for sign A; Included Mockup targeting photos with approximate sign placement; photo survey studies; Removed sign B from package temporarily. R041110120(PA: Updated photo / renderings at sheets 5 & 7.; R11020(PA: Deleted page 8. R11020(PA: Corrected Option 1 sign location on Option-1 Photo-rendering Exhibits 1 & 2. R10110020(PA: Reduced sign structure height by eliminating a 7' frame section and also reducing the lower platform accordingly. (10/04/23PA: Added a square footage study showing each letter height x width and percentage of sign that is actual letter portion of sign. R1112070(PA: Kept Option 1 placement, deleted option 2; Changed The Faux Neon at "MAYFAIR" to be RGB Faux Neon R120120120(PA: Removed Sign Square footage calculations showing "Live Area"	



National Headquarters	14201 Sovereign Road #101 Fort Worth, TX 76155 (214) 902-2000 Fax (214) 902-2044
San Antonio	17319 San Pedro Avenue Suite 200 San Antonio, TX 78232 (210) 349-3804 Fax (210) 349-8724
Northeast US	2301 River Road, Suite 201 Louisville, KY 40206 (502) 897-9800 Cell (502) 554-2575
Georgia	111 Woodstone Place Dawsonville, GA 30534 (678) 725-8852 Fax (210) 349-8724
South Texas	PO BOX 125 206 Doral Drive Portland, TX 78374 (961) 563-5999 Fax (361) 643-6533

This drawing is the property of
Chandler Signs, LLC
All rights to its use for reproduction
are reserved by Chandler Signs, LLC

**FINAL ELECTRICAL
CONNECTION BY
CUSTOMER**





Design #

0633408Ar12

Sheet 12 of 13

Client

MAYFAIR

Address

Ih35 between Watson Ln.,
New Braunfels, TX

Account Rep. STAN MACRUM
MELANIE DeLEON

Designer TQ

Date 8/15/22

Approval / Date

Client	
Sales	
Estimating	
Art	
Engineering	
Landlord	

Revision/Date

R108-18-22BR: add SMB Eng. calc's to design.
R209-07-22PA: Added more mfg. details per phone conference with D.M.
R322-08-23PA: Revised Letter Signs on frame structure with 2 Options - Option 1 - 5" deep open channel letters, redesigned with 3 rows of Contour LEDs; Option 2: FCO Alum. with 2" alum. angle perimeter all back for night, external lighting by customer. Water Tower. Calculated & added center steel support & Plan. recalculated all piers as 48" dia. x 11' deep.
R312-12-23PA: Revised "M" Logo to read "MAYFAIR" 72" odc around tower rail with 2 strokes of Contour LEDs.
R431-02-23PA: Revised "B" Water Tower to have 2 Options: Opt 1 - 36" Base Center Pipe Support x 5 dia. x 20' deep Pier with (6) 8" x 8" sq. steel supports; Opt 2 - 36" Base Center Pipe Support x 5 dia. x 20' deep Pier with (4) 10" x 10" sq. steel supports. Showed artist's graphic at both options.
R621-02-23PA: Removed Opt. 1 & 2 from rendering on pg. 18; B - Opt. 1: Changed all letters to red, not multi-colored; B Opt 2: Removed Metal Graphic, changed all letters to red, not multicolored.
R662-02-23PA: Removed Option 2 - Non-H letters for sign "A"; Reduced "A" letter signage 25%, keeping same height framework, reducing number of support piers from 18 to 14; adjusted rendering on page 1 showing correct number rows of contour led tubing; updated site plan showing all signage approx. locations. (Note: Signs C1-C5 are on separate set R652-04-23PA)
R7101-12-23PA: Broke out Mockup plan of Letter "M".
R1101-12-23PA: updated a site plan from customer.
R811-11-23PA: Updated site plan and showed 2 optional locations for sign A; included Mockup targeting photos with approximate sign placement; photo survey studies; Removed sign B from package temporarily.
R811-12-23PA: Updated photo / renderings at sheets 5 & 7.;
R1122-02-23PA: Deleted page 8.
R1126-02-23PA: Corrected Option 1 sign location on Option-1 Photo-rendering Exhibits 1 & 2.
R1111-02-23PA: Reduced sign structure height by eliminating a 7' frame section and also reducing the lower platform accordingly; (1104-02-23PA: Added a square footage study showing each letter height x width and percentage of sign that is actual letter portion of sign.
R1112-07-23PA: Kept Option 1 placement, deleted option 2; Changed The Faux Neon at "MAYFAIR" to be RGB Faux Neon
R12201-12-24PA: Removed Sign Square footage calculations showing "Live Area"



National Headquarters 14201 Sovereign Road #101
Fort Worth, TX 76155
(214) 902-2000 Fax (214) 902-2044

San Antonio 17319 San Pedro Avenue
Suite 200
San Antonio, TX 78232
(210) 349-3804 Fax (210) 349-8724

Northeast US 2301 River Road, Suite 201
Louisville, KY 40206
(502) 897-9800 Cell (502) 554-2575

Georgia 111 Woodstone Place
Dawsonville, GA 30534
(678) 725-8852 Fax (210) 349-8724

South Texas PO BOX 125 206 Doral Drive
Portland, TX 78374
(981) 563-5999 Fax (361) 643-6533

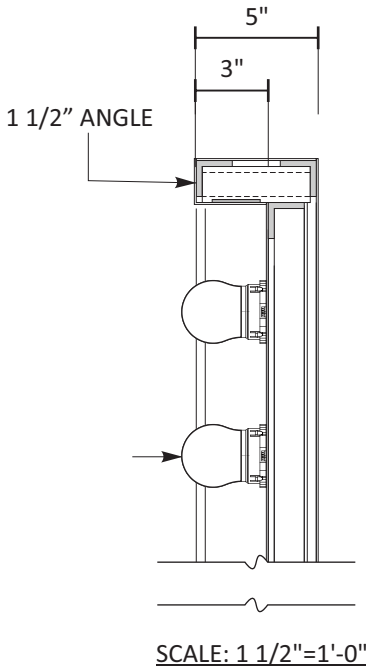
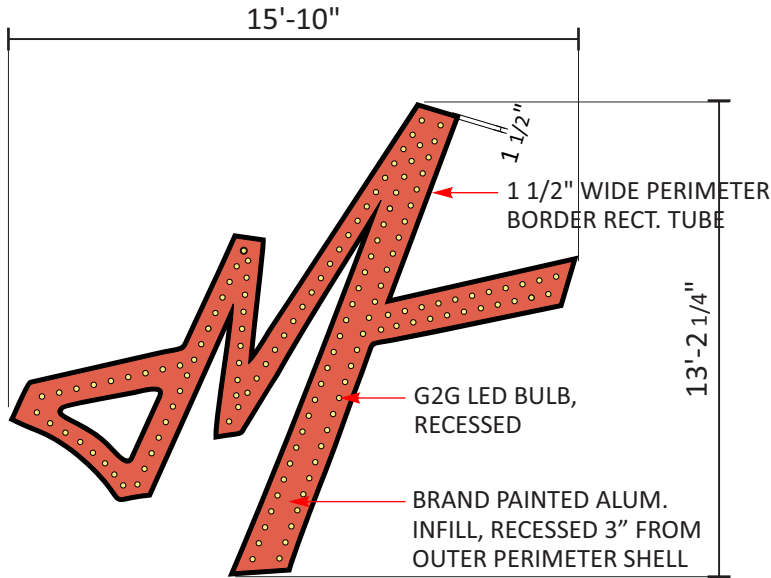
This drawing is the property of
Chandler Signs, LLC
All rights to its use for reproduction
are reserved by Chandler Signs, LLC

FINAL ELECTRICAL
CONNECTION BY
CUSTOMER

THIS SIGN IS INTENDED TO BE INSTALLED
IN ACCORDANCE WITH ARTICLE 600 OF THE
NATIONAL ELECTRICAL CODE AND/OR OTHER
APPLICABLE LOCAL CODES. THIS INCLUDES
PROPER GROUNDING & BONDING OF THE SIGN.
SIGN WILL BEAR UL LABEL(S).

5"

END VIEW



G2G Marquee Mod

Featuring SMD5050 RGB high brightness LED's, the unique D50 globe lamp has a look similar to a round decorative light bulb. The polycarbonate globe snaps on to its companion base which contains the LED's. The base can mount into practically any substrate after drilling a 1.2" hole. All wires are concealed behind the substrate.



c  us
E344189

IP65

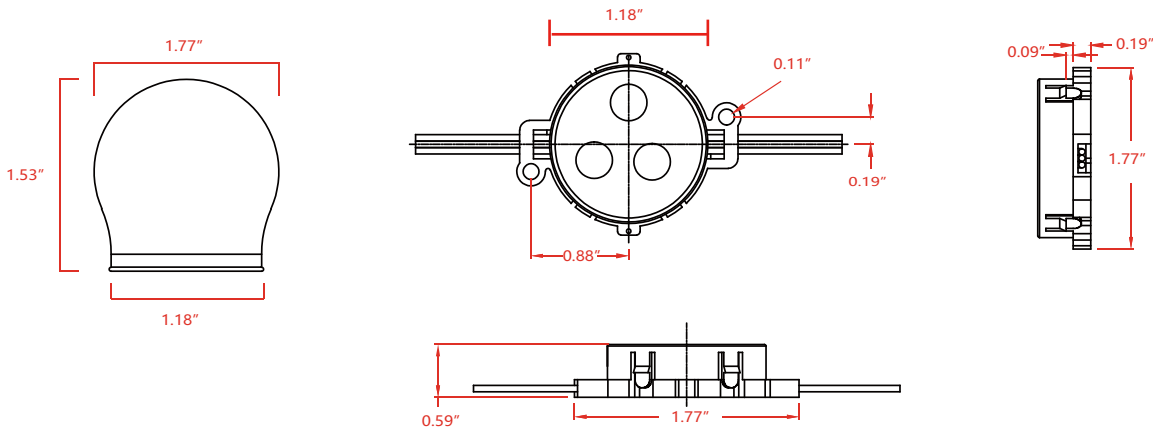
LED MODULE SPECIFICATIONS

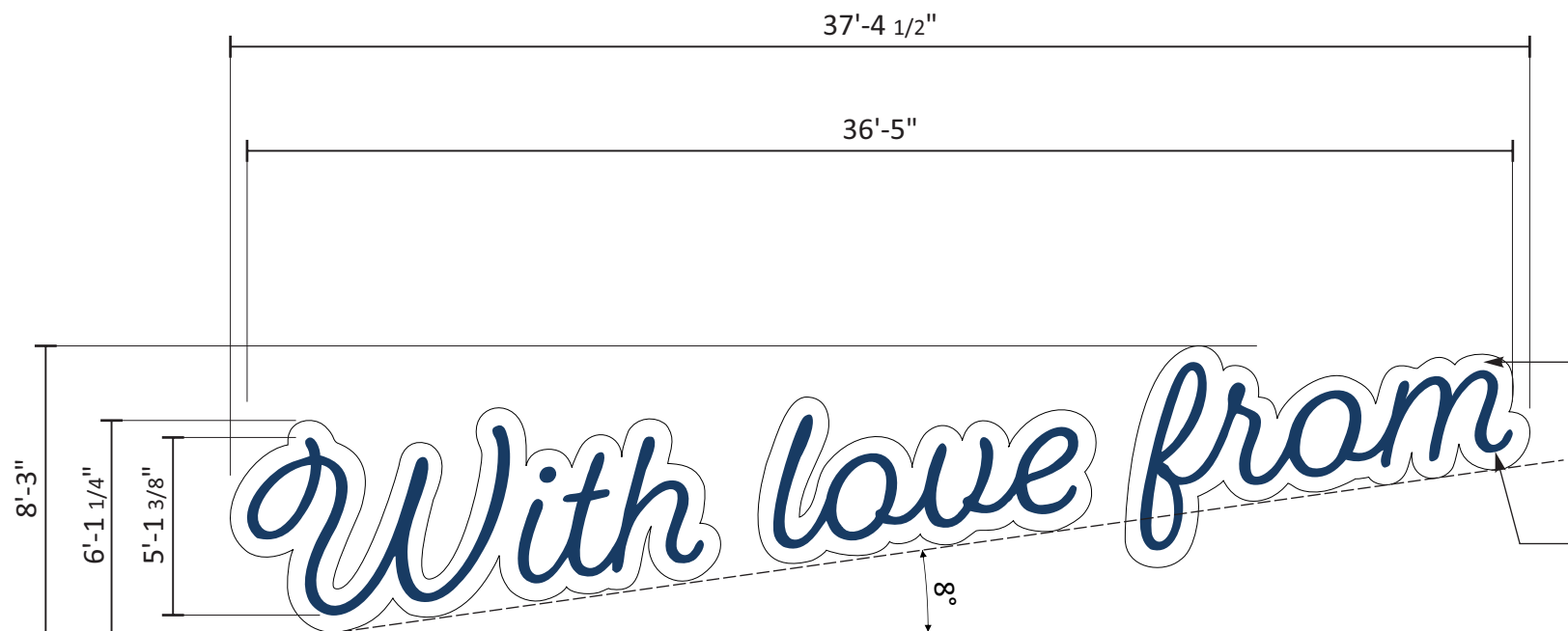
Product Diameter	30mm/1.18in
Waterproof Performance	IP65
Product line length	7.8 in
Cover Material	PC
Cover Color	Milky White
Packaging	25pcs/bag, 250pcs/case
Warranty	5 Years

SPECIFICATIONS

Model	Voltage	Signal	IC Chip	Color Temperature	Power	Aperture size of Luminaire	Applicable Temperature
G2G D50 RGB	12VDC	DMX	UCS512	RGB	0.72W	1.2 in	-20 ° to +60 °
G2G D50 White	12VDC	SPI	WS2801	2700K/5000K	0.72W	1.2 in	-20 ° to +60 °

LED MODULE DIMENSIONS

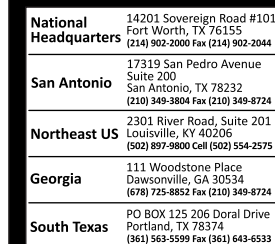




- 5" CHANNEL LETTERS PAINTED BLUE
- WHITE FACES WITH 3M VINYL APPLIED
- 1st SURFACE AND 3/4" WHITE PERIMETER
- SHOW-THRU BORDER.
- 1" TRIM CAPS TO MATCH RETURNS
- WHITE LED ILLUM.



SCALE: 3/16" = 1' - 0"



**FINAL ELECTRICAL
CONNECTION BY
CUSTOMER**

