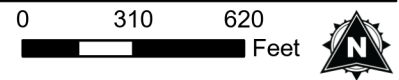
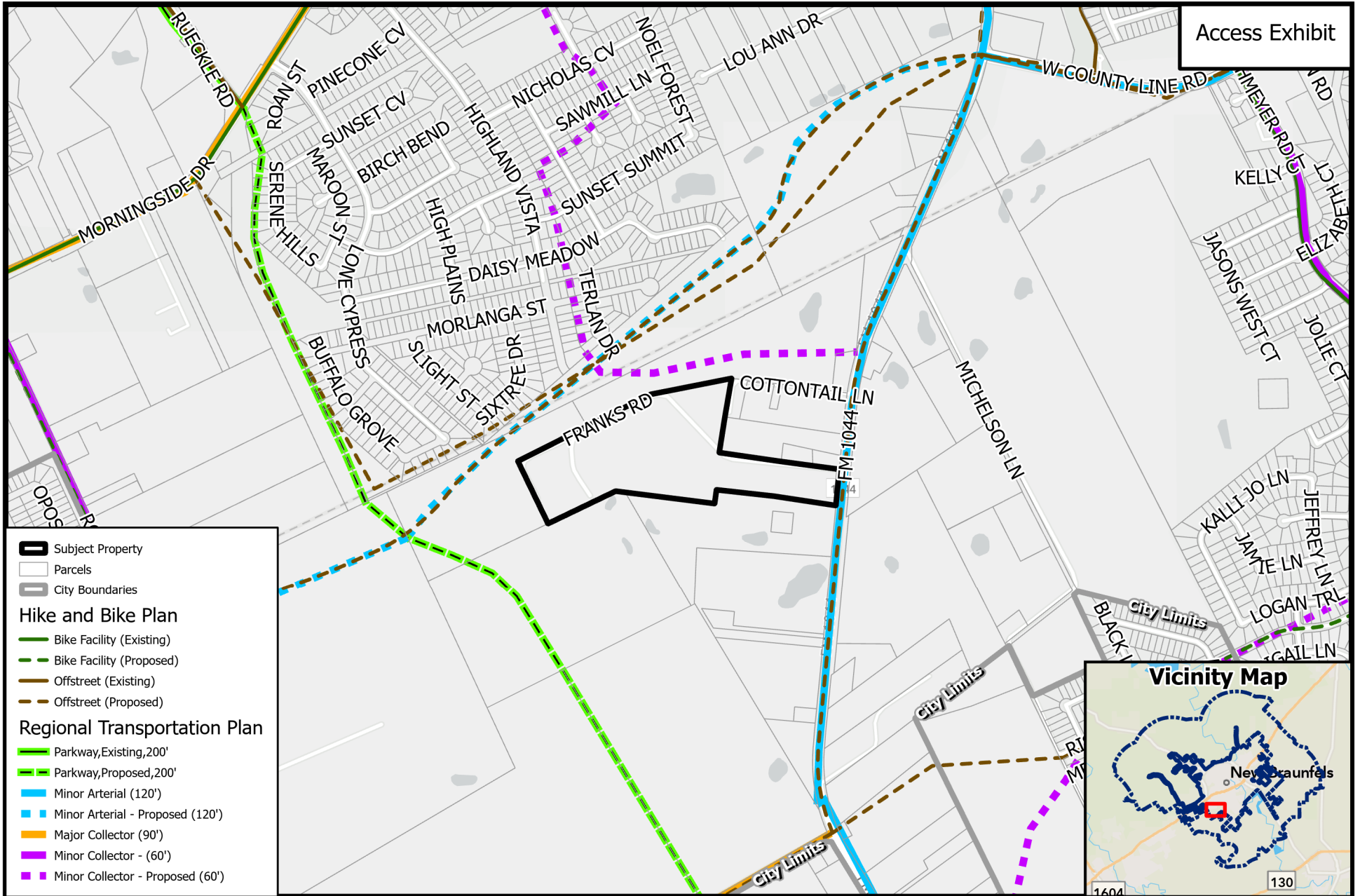


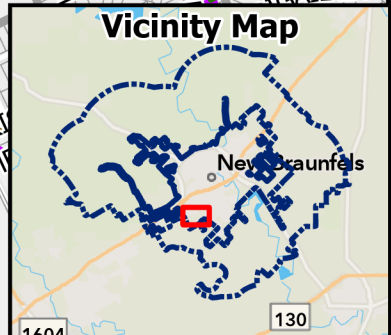
PZ22-0327
Resone APD to MU-A



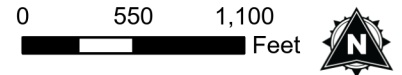


Access Exhibit

- Subject Property
- Parcels
- City Boundaries
- Hike and Bike Plan**
 - Bike Facility (Existing)
 - Bike Facility (Proposed)
 - Offstreet (Existing)
 - Offstreet (Proposed)
- Regional Transportation Plan**
 - Parkway, Existing, 200'
 - Parkway, Proposed, 200'
 - Minor Arterial (120')
 - Minor Arterial - Proposed (120')
 - Major Collector (90')
 - Minor Collector - (60')
 - Minor Collector - Proposed (60')



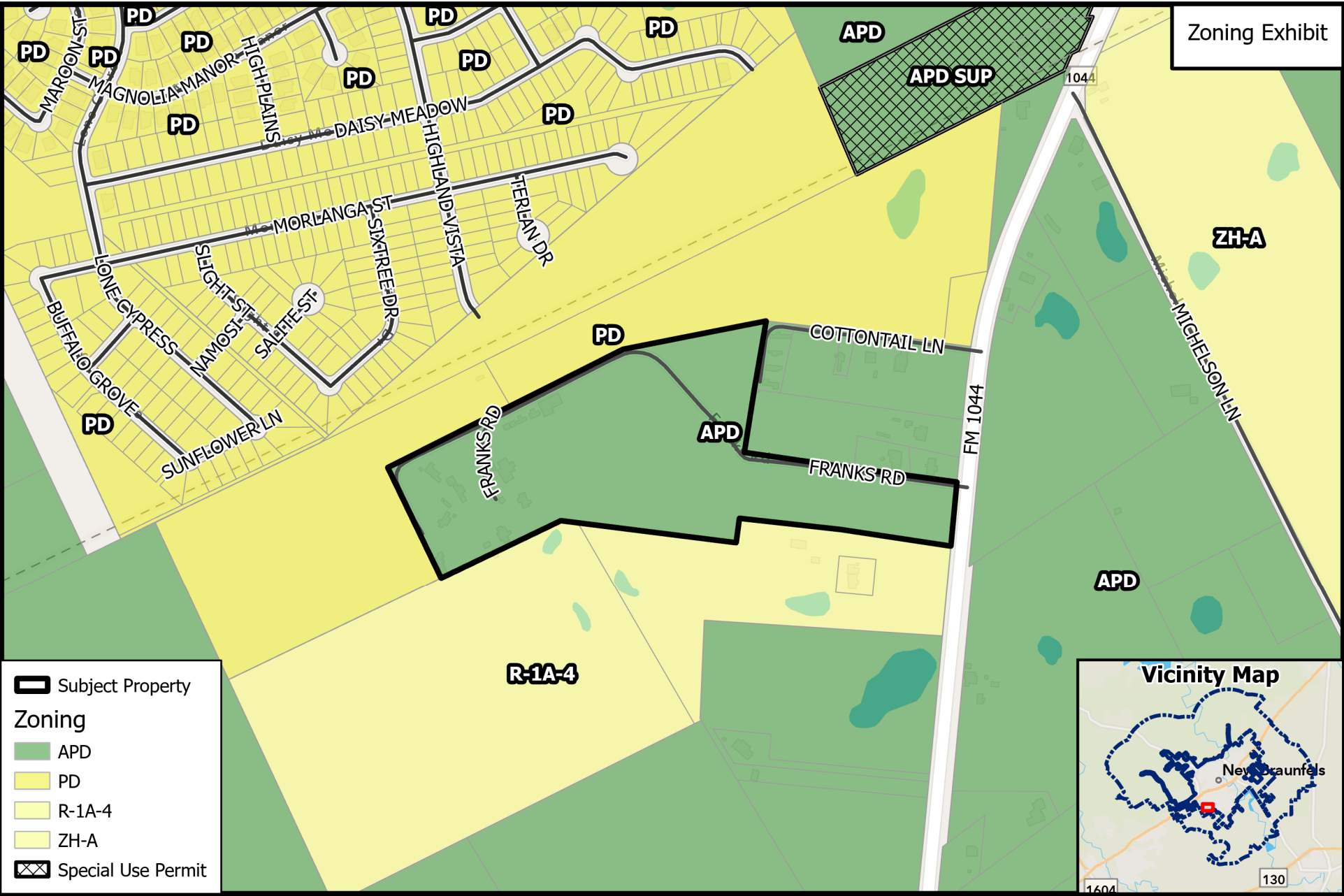
PZ22-0327
Resone APD to MU-A



Path: P:\ZoneChange & SUPs\2022\PZ22-0327 - Mahan - 409 Franks Road - APD to

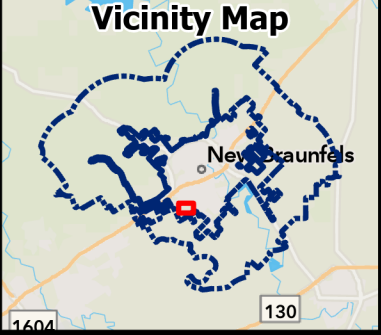
Source: City of New Braunfels Planning
 Date: 8/23/2022

DISCLAIMER: This map and information contained in it were developed exclusively for use by the City of New Braunfels. Any use or reliance on this map by anyone else is at that party's risk and without liability to the City of New Braunfels, its officials or employees for any discrepancies, errors, or variances which may exist.

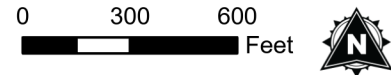


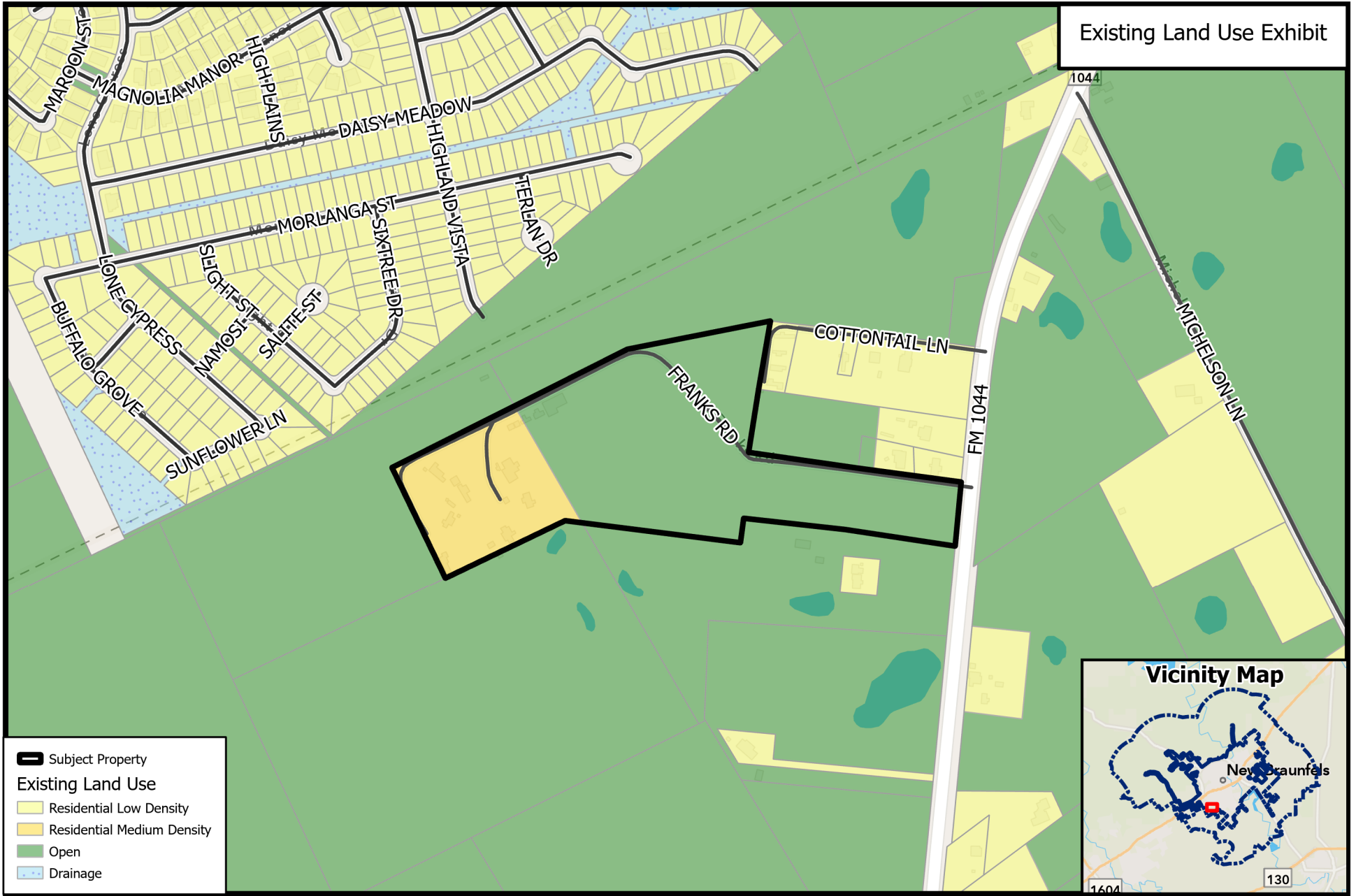
Legend

- Subject Property
- Zoning**
- APD
- PD
- R-1A-4
- ZH-A
- Special Use Permit



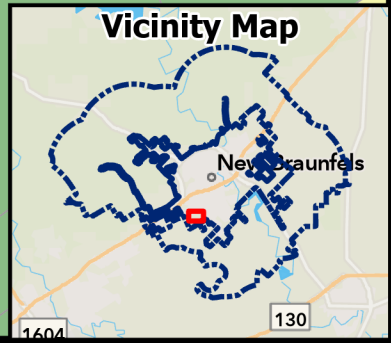
PZ22-0327
Resone APD to MU-A





Existing Land Use Exhibit

- Subject Property
- Existing Land Use
 - Residential Low Density
 - Residential Medium Density
 - Open
 - Drainage



PZ22-0327
Resone APD to MU-A



Path: P:\ZoneChange & SUPs\2022\PZ22-0327 - Mahan - 409 Franks Road - APD to

Source: City of New Braunfels Planning
 Date: 8/23/2022

DISCLAIMER: This map and information contained in it were developed exclusively for use by the City of New Braunfels. Any use or reliance on this map by anyone else is at that party's risk and without liability to the City of New Braunfels, its officials or employees for any discrepancies, errors, or variances which may exist.

