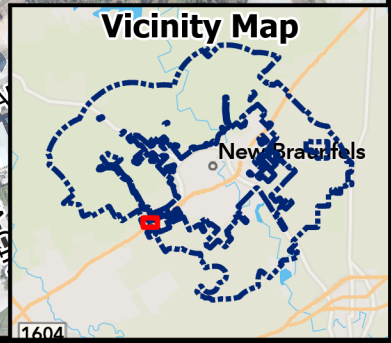




Aerial Exhibit

 Subject Property



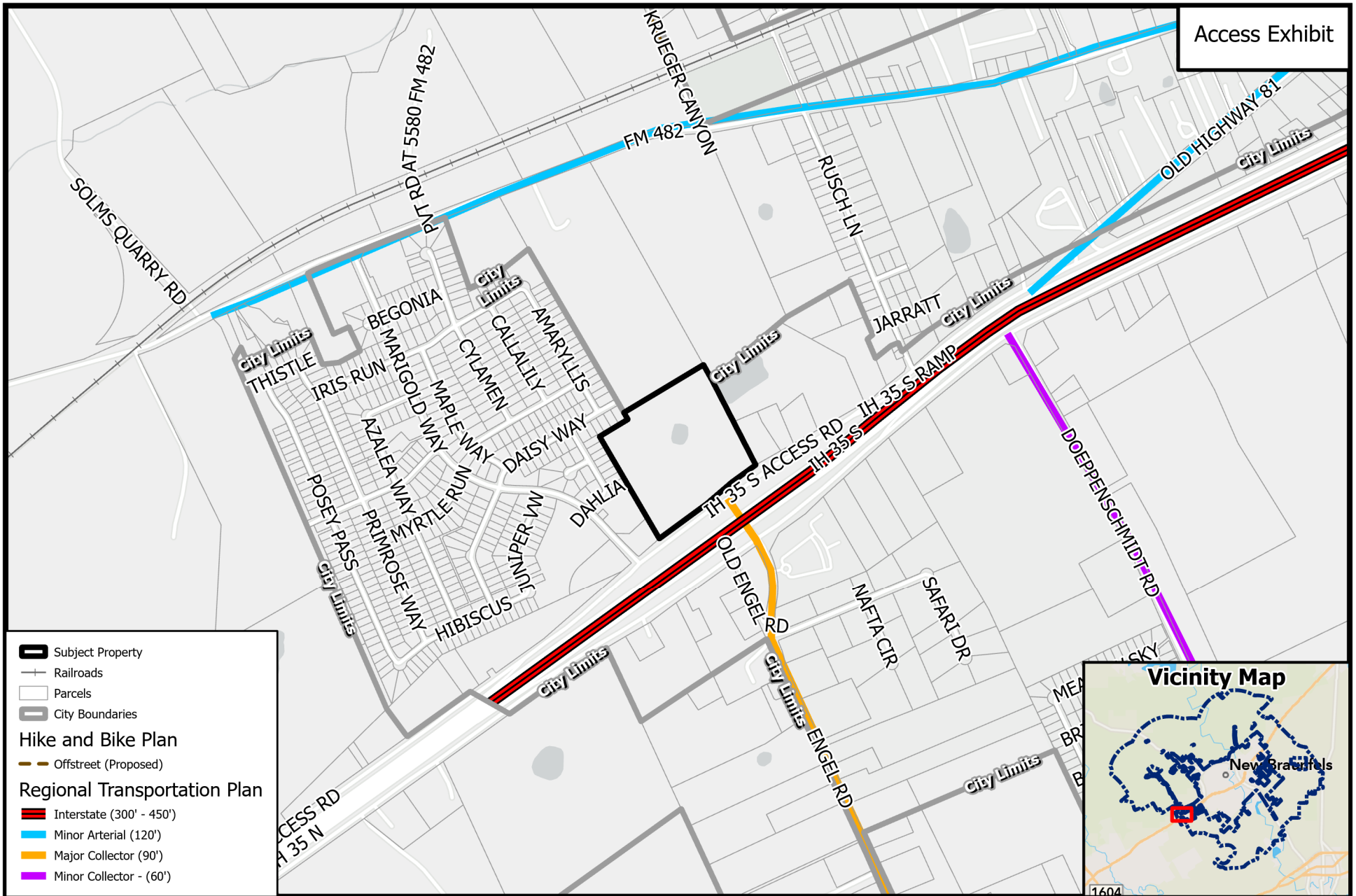
PZ24-0002
APD to M-1A

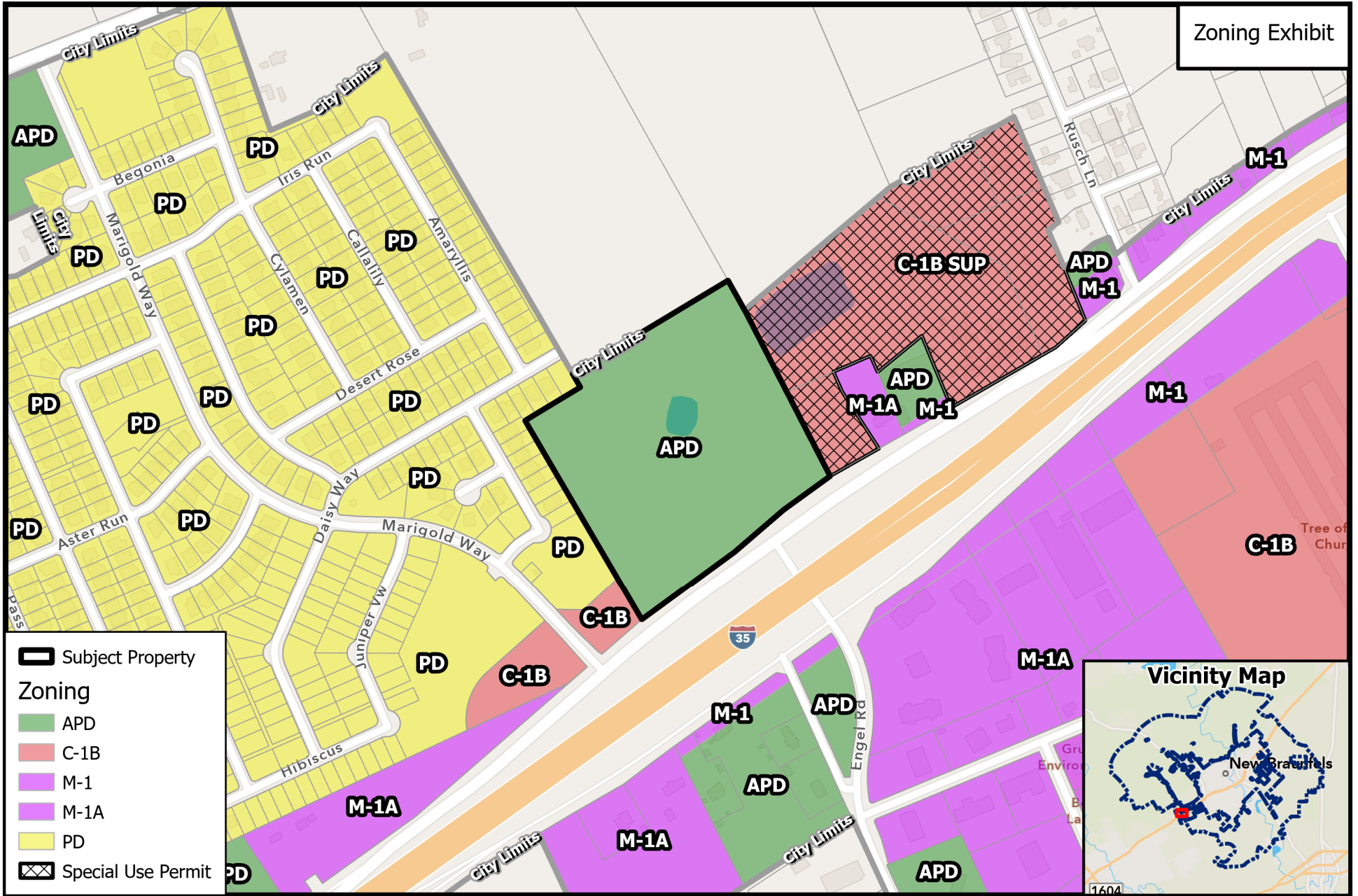


Path: B:\ZoneChange & SUPs\2024\PZ24-0002 - 5467 FM 482 (Tract 2 NBU HQ 18.1ac) - APD to

Source: City of New Braunfels Planning
Date: 1/11/2024

DISCLAIMER: This map and information contained in it were developed exclusively for use by the City of New Braunfels. Any use or reliance on this map by anyone else is at that party's risk and without liability to the City of New Braunfels, its officials or employees for any discrepancies, errors, or variances which may exist.





PZ24-0002
APD to M-1A

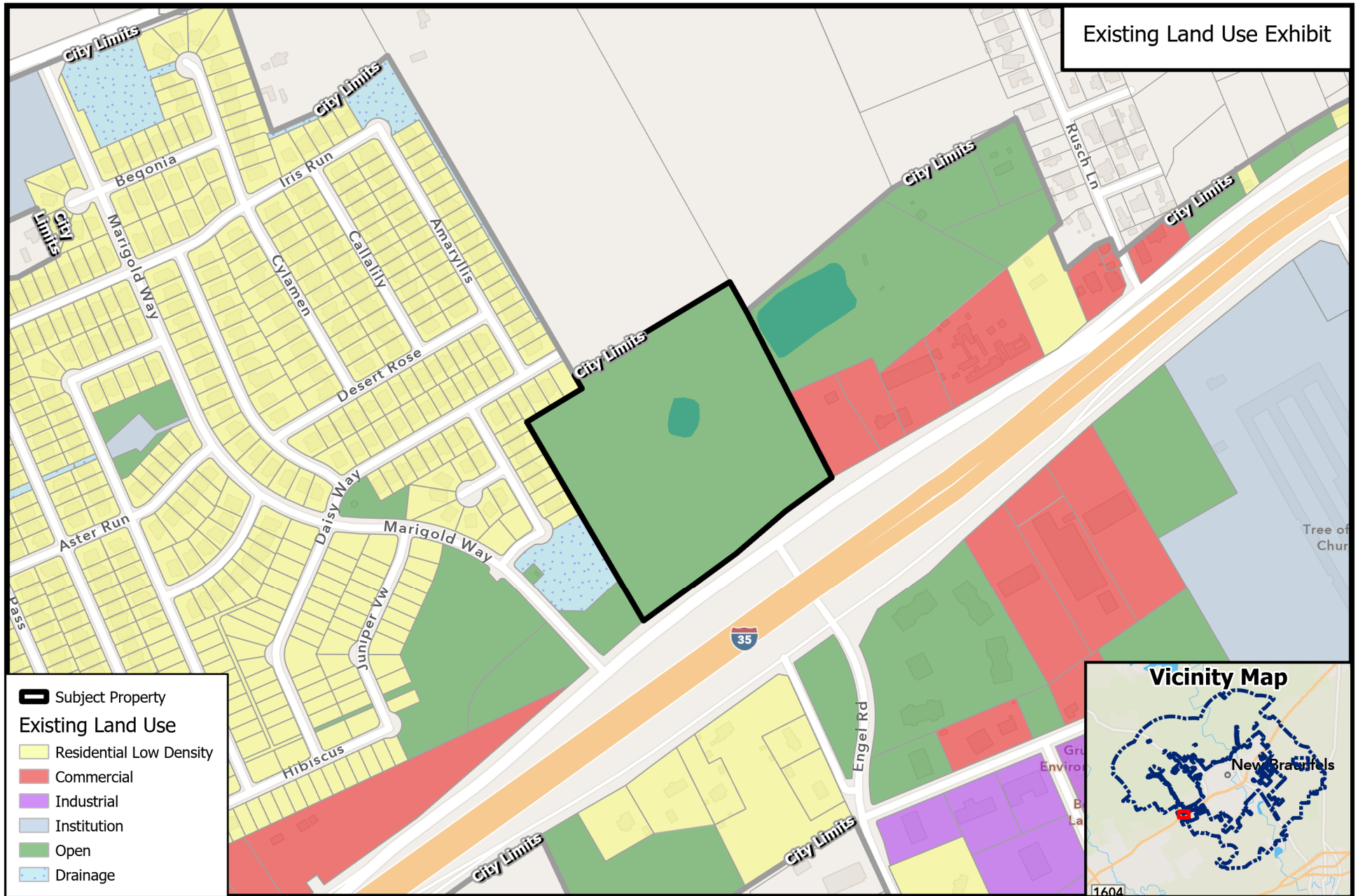
0 290 580
Feet



Path:
B:\ZoneChange & SUPs\2024\PZ24-0002 - 5467 FM 482 (Tract 2 NBU HQ 18.1ac) - APD to

Source: City of New Braunfels Planning
Date: 1/11/2024

DISCLAIMER: This map and information contained in it were developed exclusively for use by the City of New Braunfels. Any use or reliance on this map by anyone else is at that party's risk and without liability to the City of New Braunfels, its officials or employees for any discrepancies, errors, or variances which may exist.





- ◆ Located in the Oak Creek Sub-Area
- ◆ Within Transitional Mixed-Use Corridor and IH 35 Corridor
- ◆ Near existing Tourist, Civic, Education, and Employment Centers, and near proposed Market, Civic, and Employment Centers

- **Action 1.3:** Encourage balanced and fiscally responsible land use patterns.
- **Action 1.8:** Concentrate future investment in industrial and employment centers near existing and emerging hubs, such as the airport; and along existing high-capacity transportation networks, such as Interstate Highway 35.
- **Action 3.1:** Plan for healthy jobs/housing balance.