

Traffic Study Summary

Date: November 8, 2023
Request: Lower existing 30 mph speed limit in White Wing to 25 mph
Recommendation: Retain existing 30 mph speed limit in White Wing based on current speeds

Background

The statutory maximum speed limit in the City of New Braunfels is 30 miles per hour (mph) except where otherwise established by ordinance and posted by official traffic signs. White Wing is a subdivision located off the south side of Klein Road between S Walnut Avenue and FM 725. The speed limit throughout the subdivision is 30 mph, and each street has sidewalks on both sides. White Wing has direct connection to Klein Road where the posted speed limit is 30 mph.

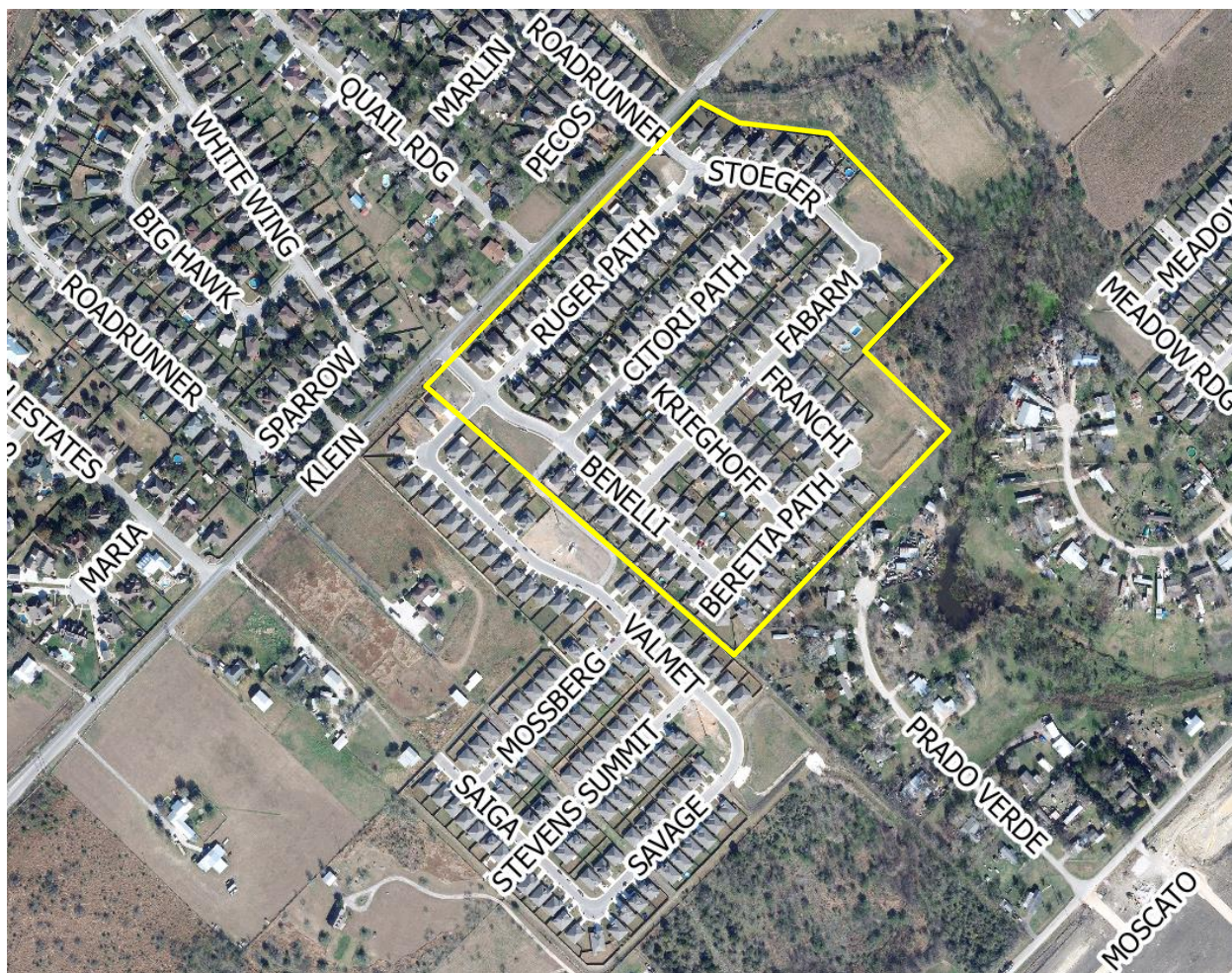


Figure 1. White Wing Subdivision

An engineering study was completed to evaluate lowering the existing speed limit on Benelli Drive from 30 mph to 25 mph. The study was completed as part of a larger request from the residents and HOA due to speeding and safety concerns near a community playground that was under construction at the time, which included investigations for speed humps and all-way stops.

Guidance

Speed limits applicable to public streets are established:

- Statutorily- a maximum speed limit applicable to a particular class of road that is established by State law; or
- As altered speed zones - based on engineering studies.

The maximum speed limits posted should be based primarily on the 85th percentile speed - the speed at or below which 85 percent of vehicles travel. Other factors that may be considered when establishing or reevaluating speed limits include the following:

- Road characteristics
- Roadside development and environment
- Parking practices and pedestrian activity
- Reported crash experience

A city may declare a lower speed limit of not less than 25 miles per hour if the governing body determines that the prima facie speed limit on the streets is unreasonable or unsafe. By State Law, a traffic engineering study is required in order for a city to lower a speed limit below 25 mph.

Site Investigation

Site investigations and a traffic study were completed for Benelli Drive in White Wing in April 2023.

Crash History

Traffic crash data for 2020 through October 2023 was found through TxDOT's Crash Records Information System. There were 0 reported crashes in the White Wing subdivision during this time. There was 1 crash reported on Benelli Drive at the intersection with Klein Road, but it was not speed related.

Data Collection

Traffic speed and volume data were collected on April 6, 2023 along Benelli Drive. The average daily traffic (ADT) was 332 vehicles per day (vpd) and the 85th percentile speed was 25 mph.

Recommendation

Based on the site investigation and collected speed data, it is recommended that the regulatory speed in White Wing be maintained at 30 mph at this time. The measured 85th percentile speed was below the posted speed limit. Posting signs with a lower speed limit would likely not affect driver behavior.