



Aerial Exhibit

Vicinity Map

New Braunfels

1604



**PZ24-0002**  
**APD to M-1A**

0 290 580  
Feet

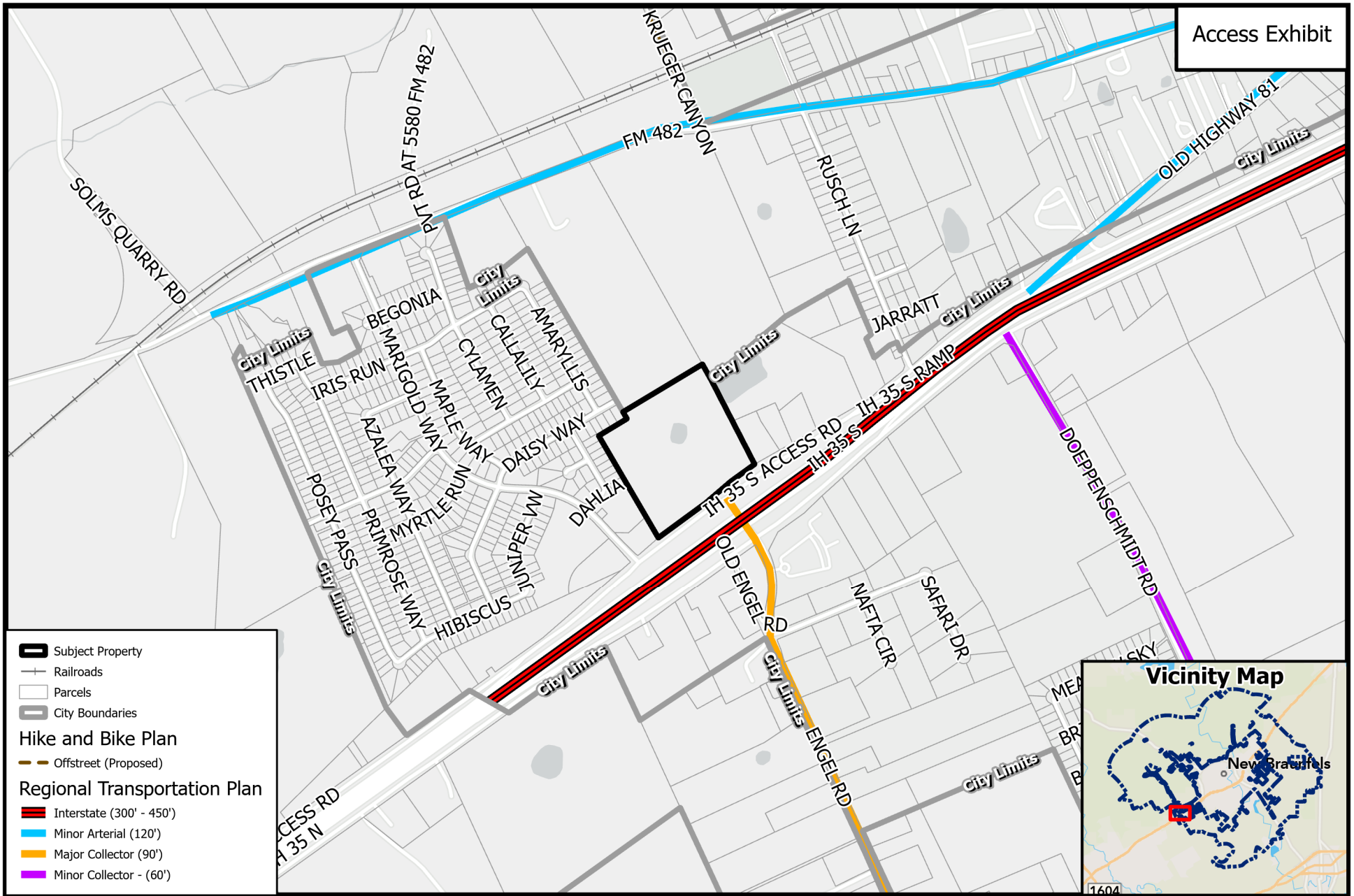


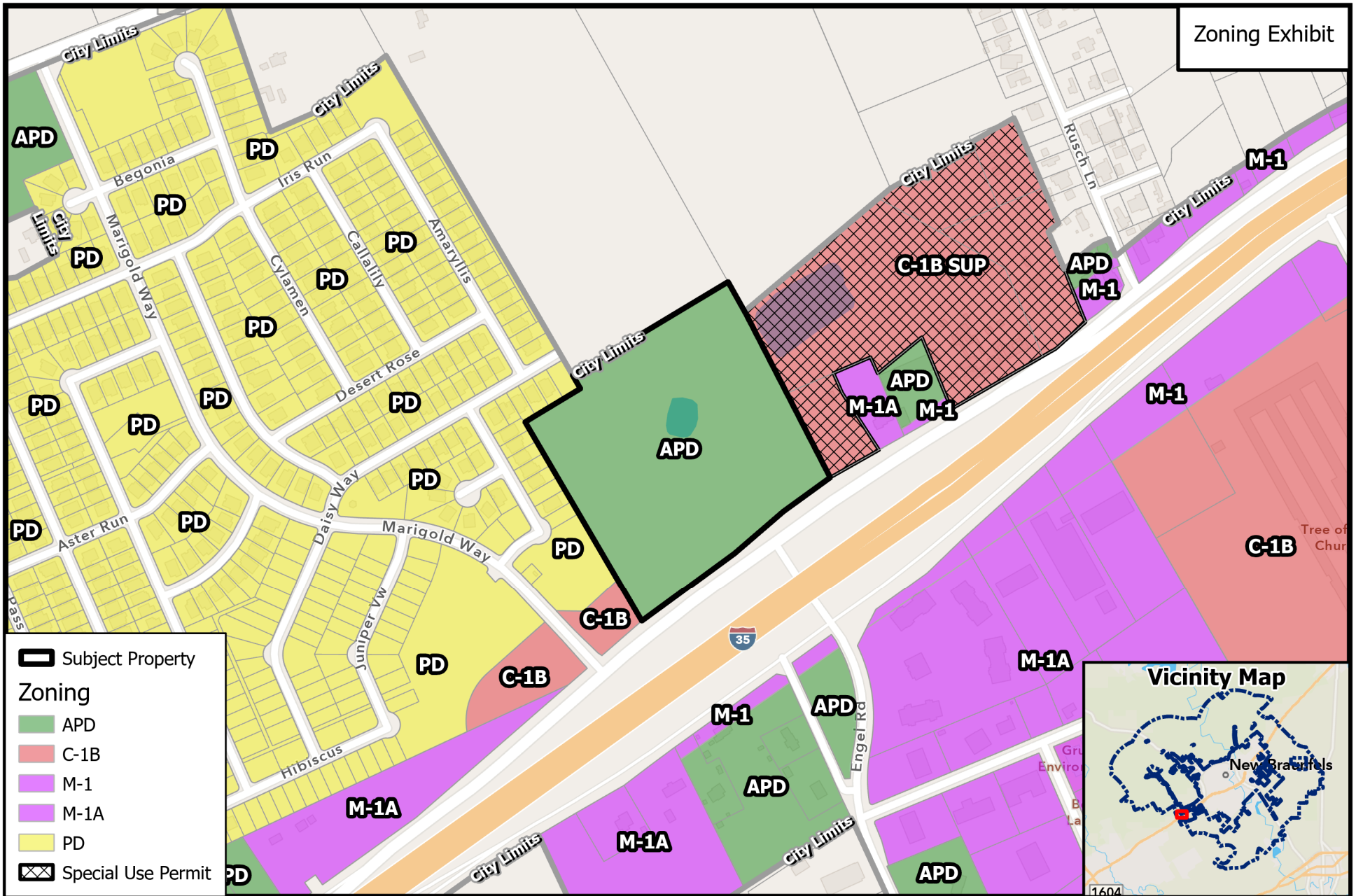
Path:  
B:\ZoneChange & SUPS\2024\PZ24-0002 - 5467 FM 482 (Tract 2 NBU HQ 18.1ac) - APD to

Source: City of New Braunfels Planning  
Date: 1/11/2024

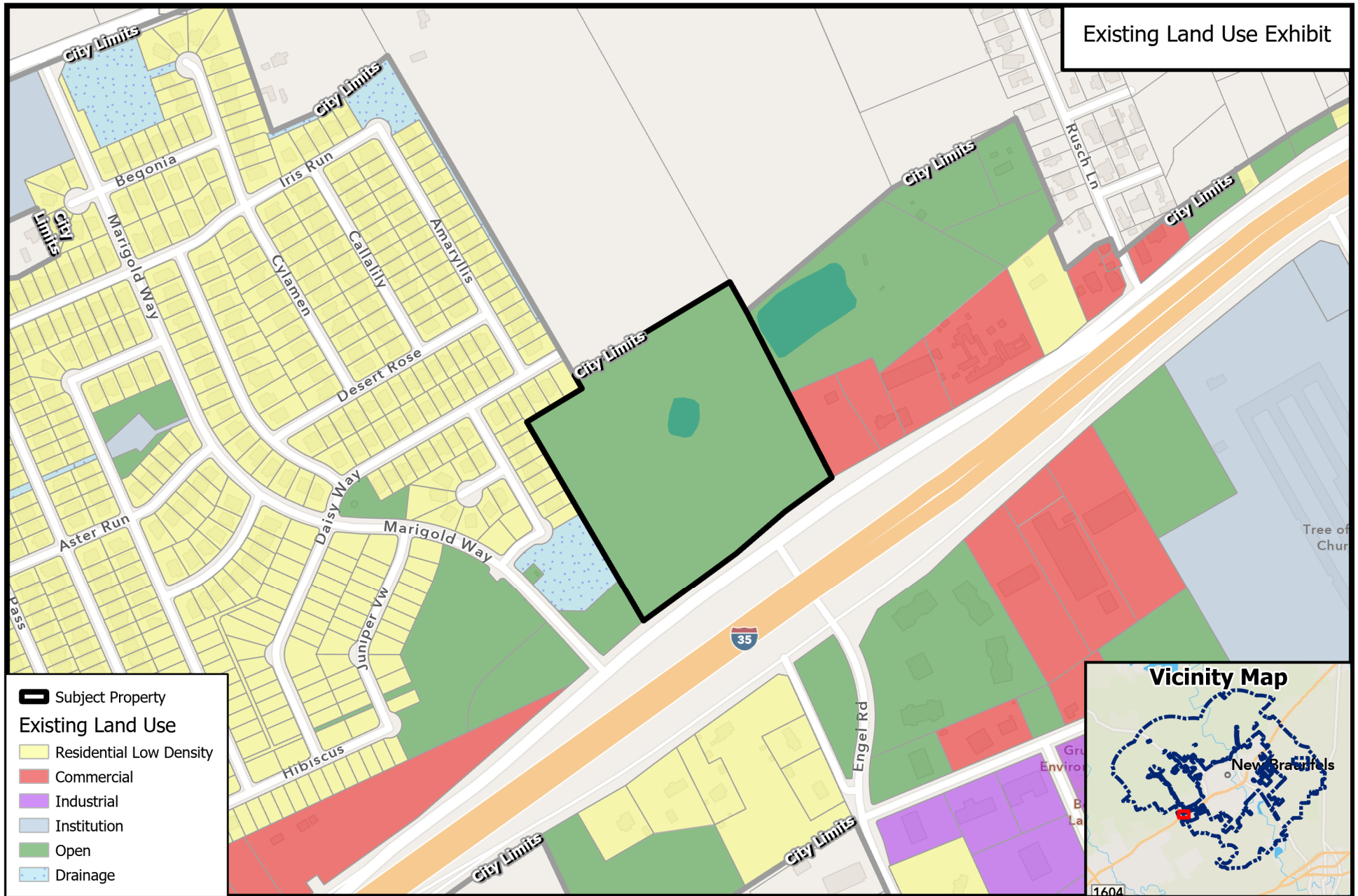
DISCLAIMER: This map and information contained in it were developed exclusively for use by the City of New Braunfels. Any use or reliance on this map by anyone else is at that party's risk and without liability to the City of New Braunfels, its officials or employees for any discrepancies, errors, or variances which may exist.















- **Action 1.3:** Encourage balanced and fiscally responsible land use patterns.
- **Action 1.8:** Concentrate future investment in industrial and employment centers near existing and emerging hubs, such as the airport; and along existing high-capacity transportation networks, such as Interstate Highway 35.
- **Action 3.1:** Plan for healthy jobs/housing balance.