

1/30/2025 10:28:27 AM \*\*\*File-02User s\*\*\*Public Works\*\*farrowDocuments\*\*layouts\*\*onstar\_School\_Zone\_001.dgn

**SCHOOL**  
**SPEED LIMIT 20**  
7:00AM-8:00AM  
3:00PM-3:50PM  
CELL PHONE USE PROHIBITED  
UP TO \$200 FINE  
EXISTING, TO BE RELOCATED

**SCHOOL**  
**SPEED LIMIT 20**  
7:00AM-8:00AM  
3:00PM-3:50PM  
CELL PHONE USE PROHIBITED  
UP TO \$200 FINE  
EXISTING, TO REMAIN

EXISTING, TO REMAIN  
**SPEED LIMIT 30**  
END SCHOOL ZONE  
NEW INSTALL S5-2aTP 24x10

**SCHOOL**  
**SPEED LIMIT 20**  
WHEN FLASHING  
CELL PHONE USE PROHIBITED  
UP TO \$200 FINE  
EXISTING, TO REMAIN

END SCHOOL ZONE  
NEW INSTALL S5-2 24x30

END SCHOOL ZONE  
NEW INSTALL S5-2 24x30

**SCHOOL**  
**SPEED LIMIT 20**  
WHEN FLASHING  
CELL PHONE USE PROHIBITED  
UP TO \$200 FINE  
EXISTING, TO REMAIN

EXISTING, TO REMAIN  
**SPEED LIMIT 30**  
END SCHOOL ZONE  
NEW INSTALL S5-2aTP 24x10

**SCHOOL**  
**SPEED LIMIT 20**  
7:00AM-8:00AM  
3:00PM-3:50PM  
CELL PHONE USE PROHIBITED  
UP TO \$200 FINE  
NEW INSTALL  
S5-1 24x48  
S4-1P 24x10  
S7-1T 24x18

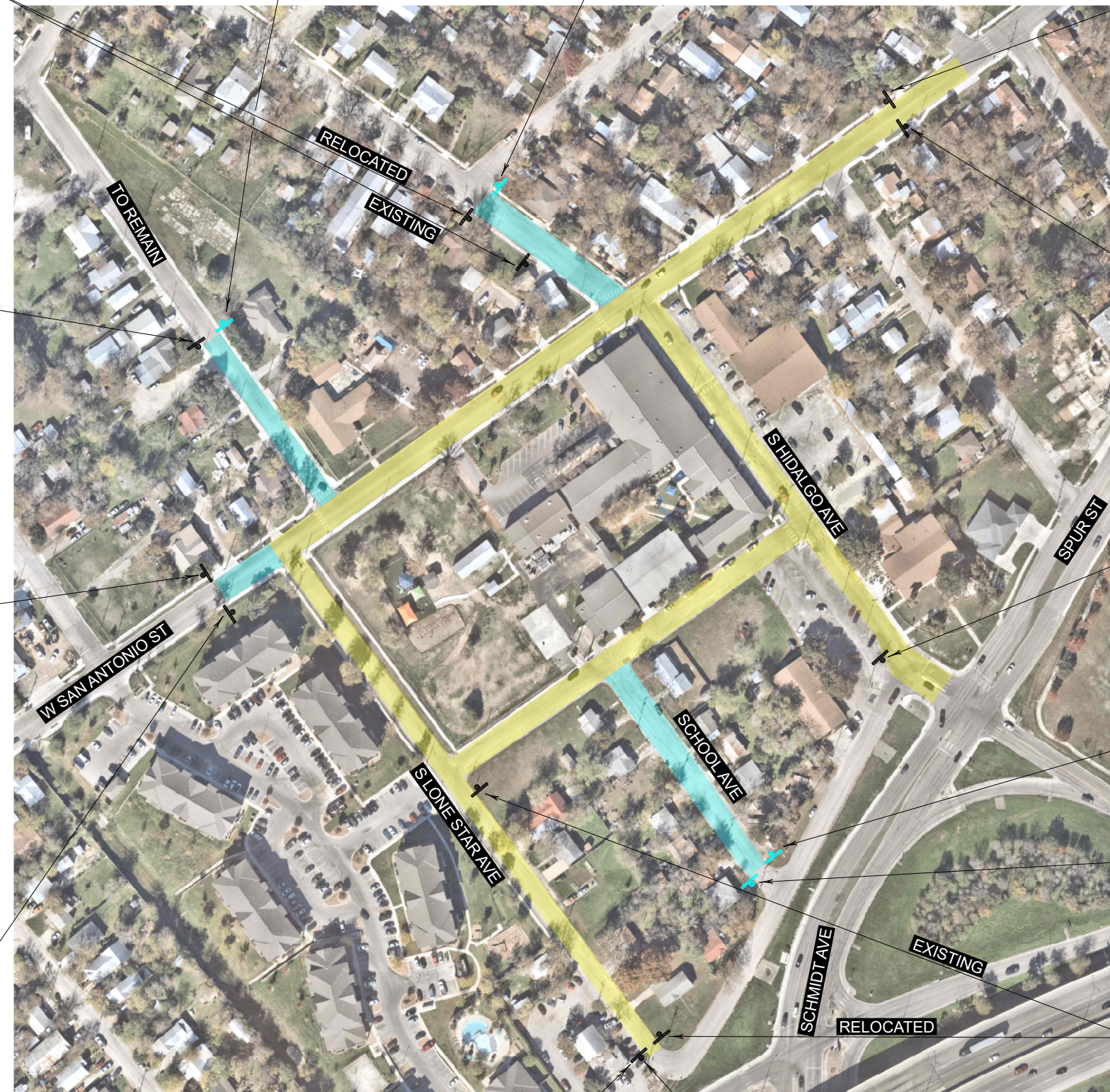
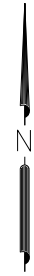
END SCHOOL ZONE  
NEW INSTALL S5-2 24x30


**SCHOOL**  
**SPEED LIMIT 20**  
7:00AM-8:00AM  
3:00PM-3:50PM  
CELL PHONE USE PROHIBITED  
UP TO \$200 FINE  
EXISTING, TO BE RELOCATED

END SCHOOL ZONE  
NEW INSTALL S5-2 24x30

**STOP**  
EXISTING, TO BE REMOVED

- = EXISTING SIGN
- = PROPOSED SIGN
- = EXISTING SCHOOL ZONE
- = PROPOSED SCHOOL ZONE



NO.	DATE	REVISION	APPROV.
 ENGINEERING DIVISION			
LONE STAR EARLY CHILDHOOD CENTER SCHOOL ZONE SIGNING LAYOUT			
SCALE: 1"=200'		SHEET: 1 OF 1	