

*Pfeuffer-Holm Co.*  
— 186 —  
NEW BRAUNFELS, TEX.



**209 W San Antonio St**  
Historic Review





Stucco added over brick in 1940's

Existing parapet detail covered up

Multiple existing anchors (used and unused)

Mural over existing stucco in early 2000's

Transom in-filled and covered in stucco

Stucco added over brick and existing windows in 1940's

Tie-back awning condition not considered structurally sound

Existing wood windows and window displays replaced in 1940's

Expose historic cast iron columns



1890's

Pfeuffer-Holm Co.  
NEW BRAUNFELS, TEX

1900's

Existing transom windows were originally covered by awning to protect from western sun

Original awning had a wood column support system, not allowed by code anymore



1920's

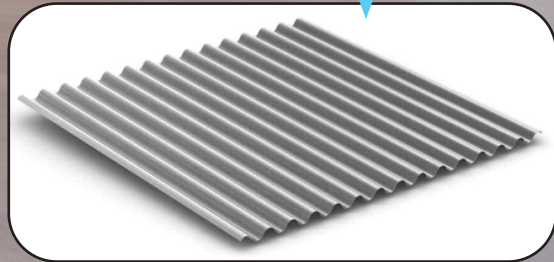


Transom exposed pre 1940's modifications



Existing mural and stucco to remain until future Castell St project is completed

Galvalume S-deck, aluminum finish roof





Small uplighting fixture mounted to canopy



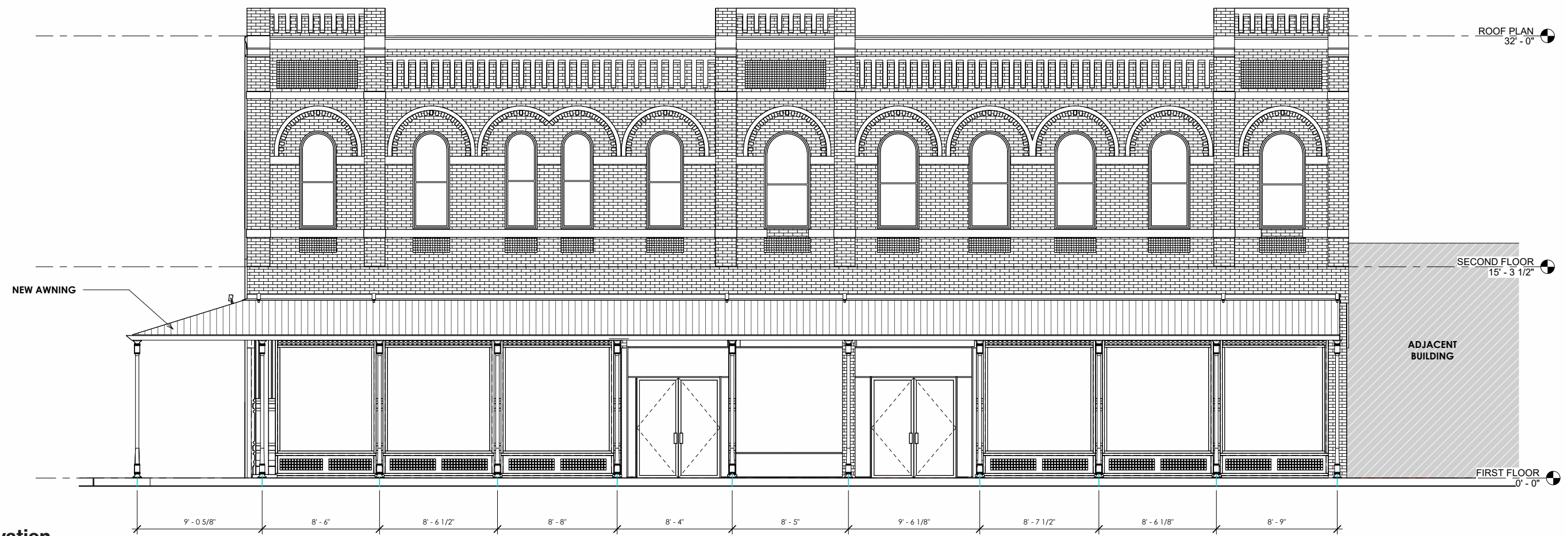


Add steel columns to support awning

Expose historic cast iron columns



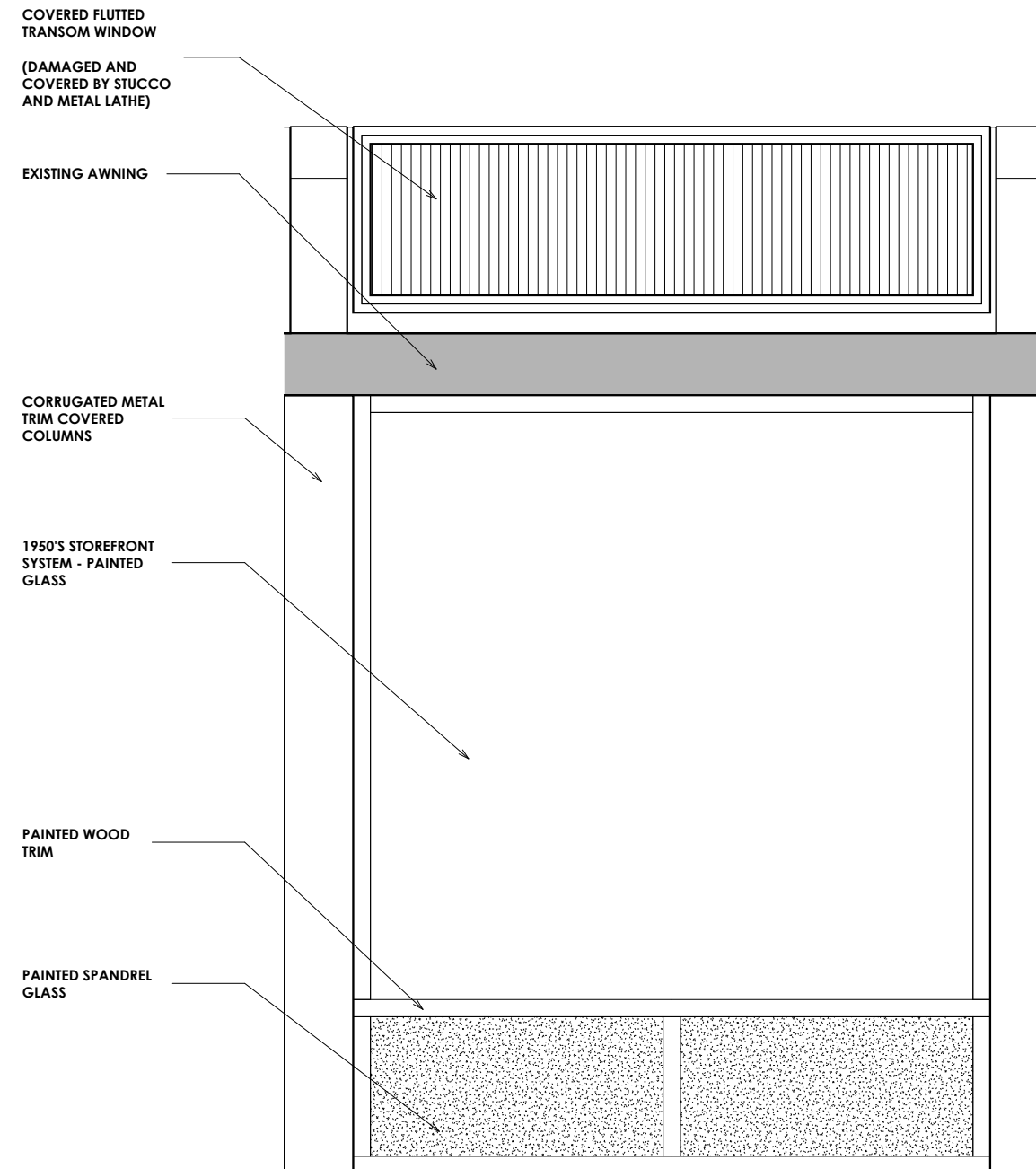
Existing Elevation



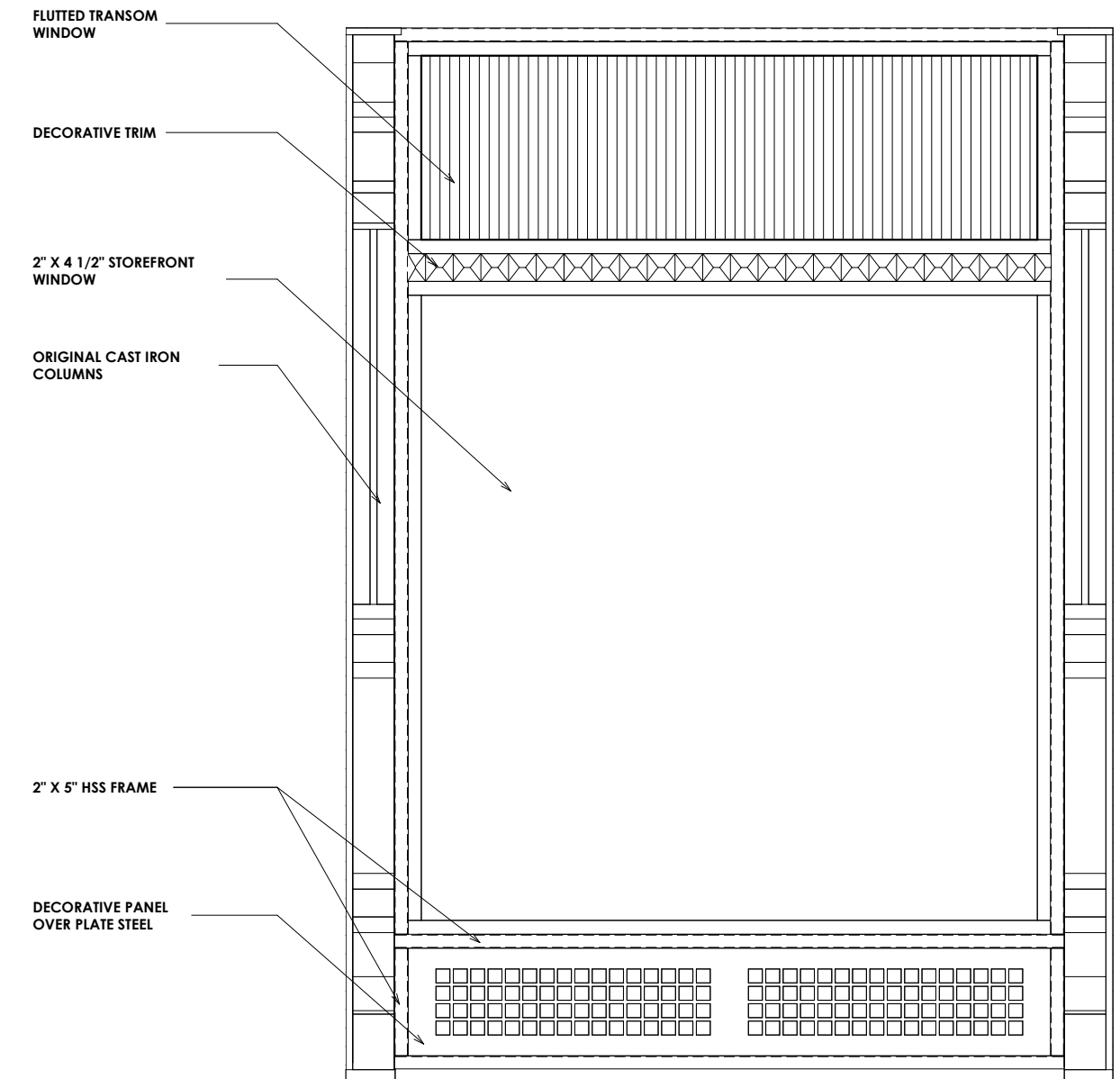
Proposed Elevation



Original Window Photo



Existing Elevation



Proposed Elevation