

SUP25-103

R-1A 6.6 AH & M-1A AH to R-3L AH SUP

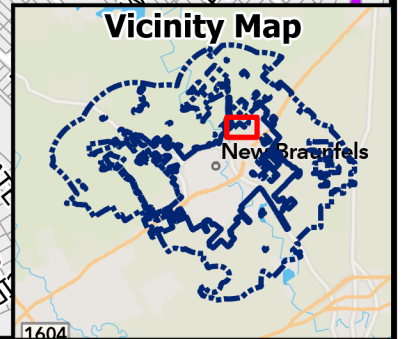
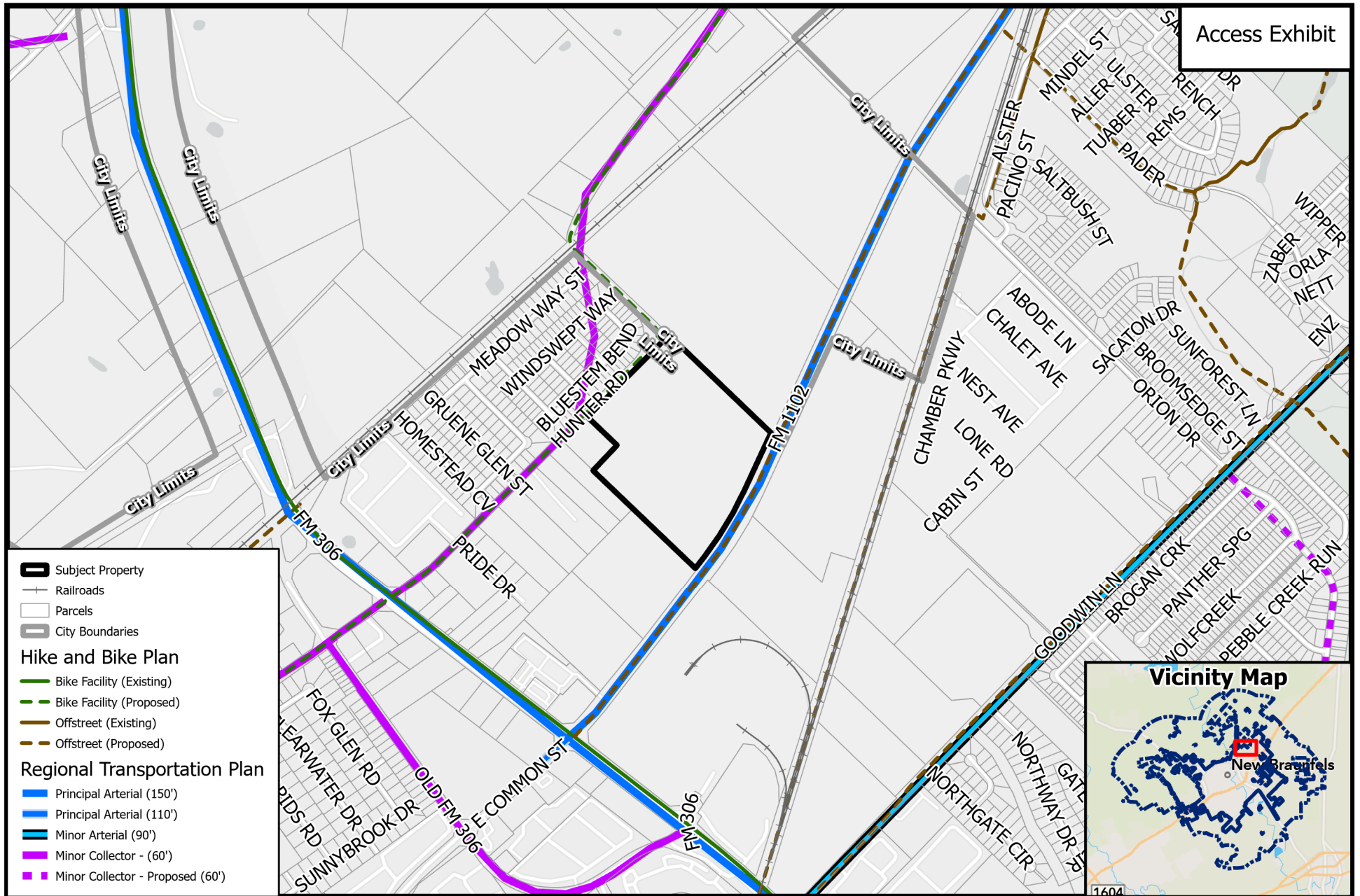
0 390 780 Feet



Path: P:\ZoneChange & SUPs\2025\SUP25-103 - Hunter Rd - R-1A-6.6 to R-3L SUP (Type

Source: City of New Braunfels Planning
Date: 4/25/2025

DISCLAIMER: This map and information contained in it were developed exclusively for use by the City of New Braunfels. Any use or reliance on this map by anyone else is at that party's risk and without liability to the City of New Braunfels, its officials or employees for any discrepancies, errors, or variances which may exist.



SUP25-103
R-1A 6.6 AH & M-1A AH to R-3L AH SUP

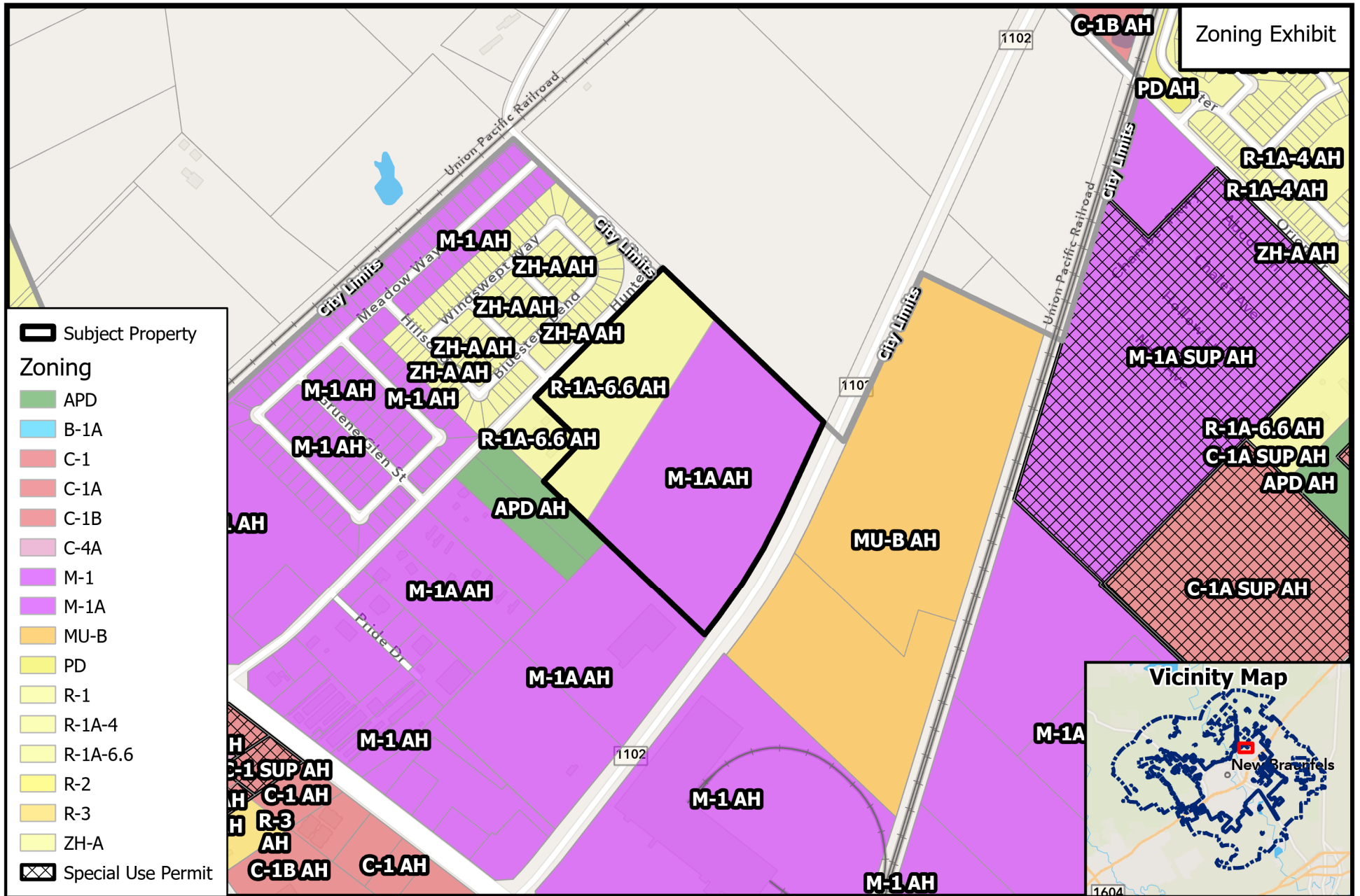
0 620 1,240
 Feet



Path: P:\ZoneChange & SUPs\2025\SUP25-103 - Hunter Rd - R-1A-6.6 to R-3L SUP (Type

Source: City of New Braunfels Planning
 Date: 4/25/2025

DISCLAIMER: This map and information contained in it were developed exclusively for use by the City of New Braunfels. Any use or reliance on this map by anyone else is at that party's risk and without liability to the City of New Braunfels, its officials or employees for any discrepancies, errors, or variances which may exist.



SUP25-103 **R-1A 6.6 AH & M-1A AH to R-3L AH SUP**

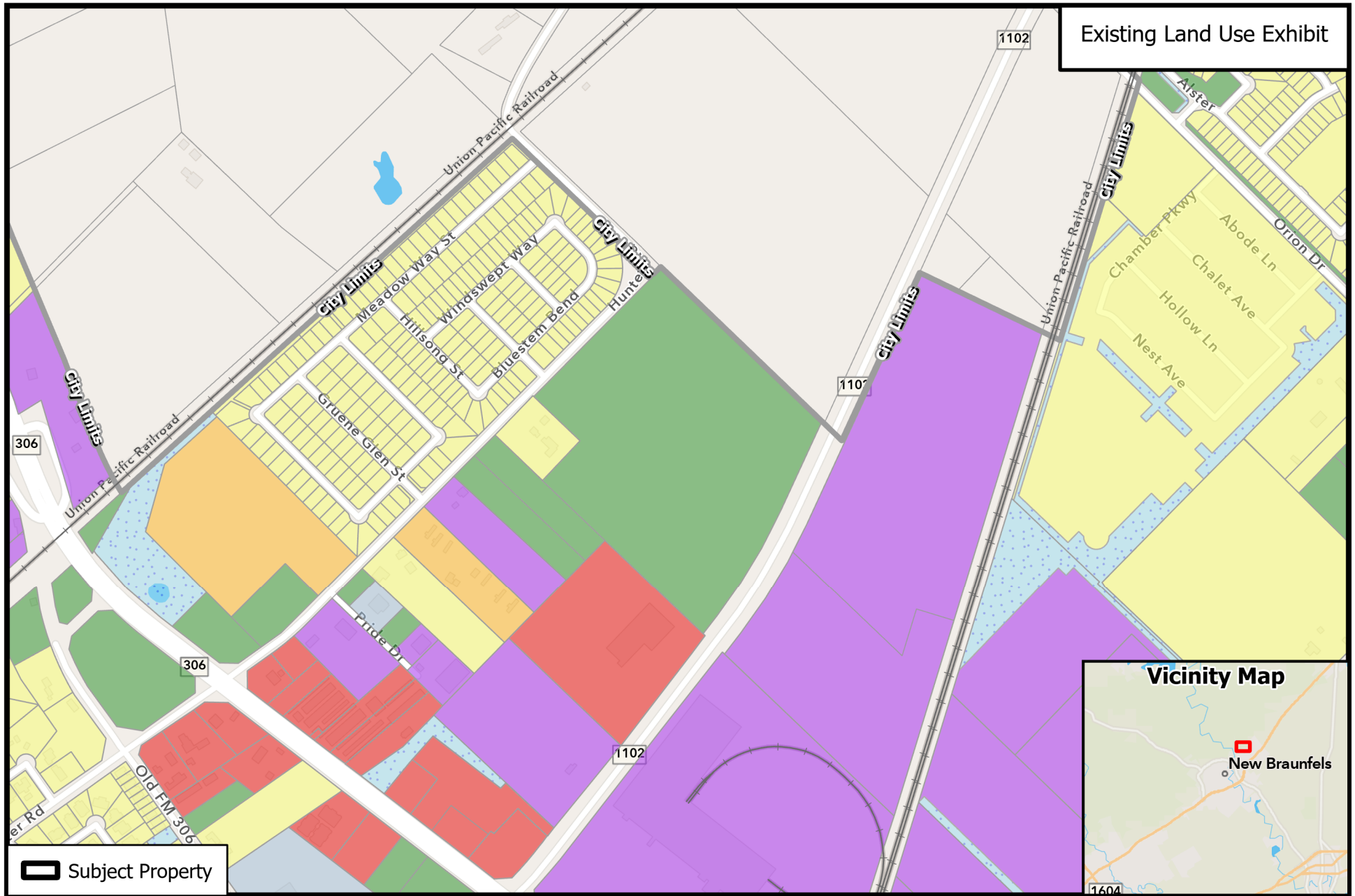
0 390 780
 Feet



Path: P:\ZoneChange & SUPs\2025\SUP25-103 - Hunter Rd - R-1A-6.6 to R-3L SUP (Type

Source: City of New Braunfels Planning
 Date: 4/25/2025

DISCLAIMER: This map and information contained in it were developed exclusively for use by the City of New Braunfels. Any use or reliance on this map by anyone else is at that party's risk and without liability to the City of New Braunfels, its officials or employees for any discrepancies, errors, or variances which may exist.



SUP25-103 R-1A 6.6 AH & M-1A AH to R-3L AH SUP

0 390 780
Feet



Path:
P:\ZoneChange & SUPs\2025\SUP25-103 - Hunter Rd - R-1A-6.6 to R-3L SUP (Type

Source: City of New Braunfels Planning
Date: 5/13/2025

DISCLAIMER: This map and information contained in it were developed exclusively for use by the City of New Braunfels. Any use or reliance on this map by anyone else is at that party's risk and without liability to the City of New Braunfels, its officials or employees for any discrepancies, errors, or variances which may exist.