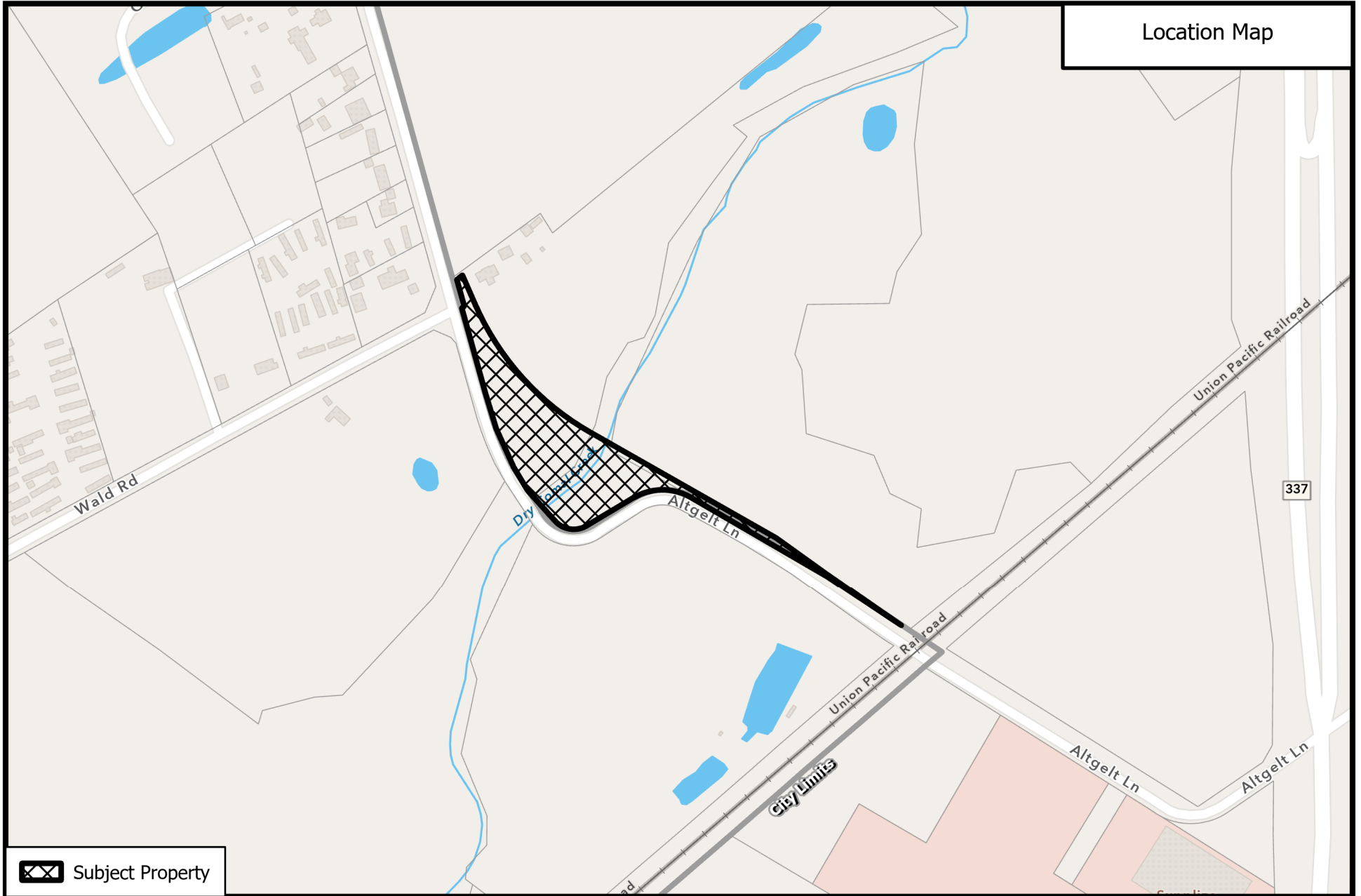


Location Map

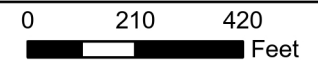


 Subject Property



**ORD24-337**

**Disannexation - Altgelt Ln**



Path: P:\Annexation\Disannexation\Altgelt Ln. - Comal County\GIS\AltgeltDisannexation.aprx


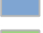

Source: City of New Braunfels Planning  
Date: 10/17/2024

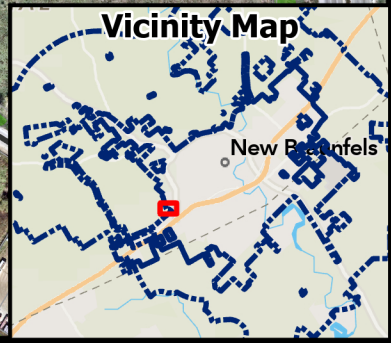
DISCLAIMER: This map and information contained in it were developed exclusively for use by the City of New Braunfels. Any use or reliance on this map by anyone else is at that party's risk and without liability to the City of New Braunfels, its officials or employees for any discrepancies, errors, or variances which may exist.



Aerial Exhibit



 Subject Property  
**Floodplain**  
 Floodway  
 1% Annual Chance Flood Hazard



**ORD24-337**  
**Disannexation - Altgelt Ln**

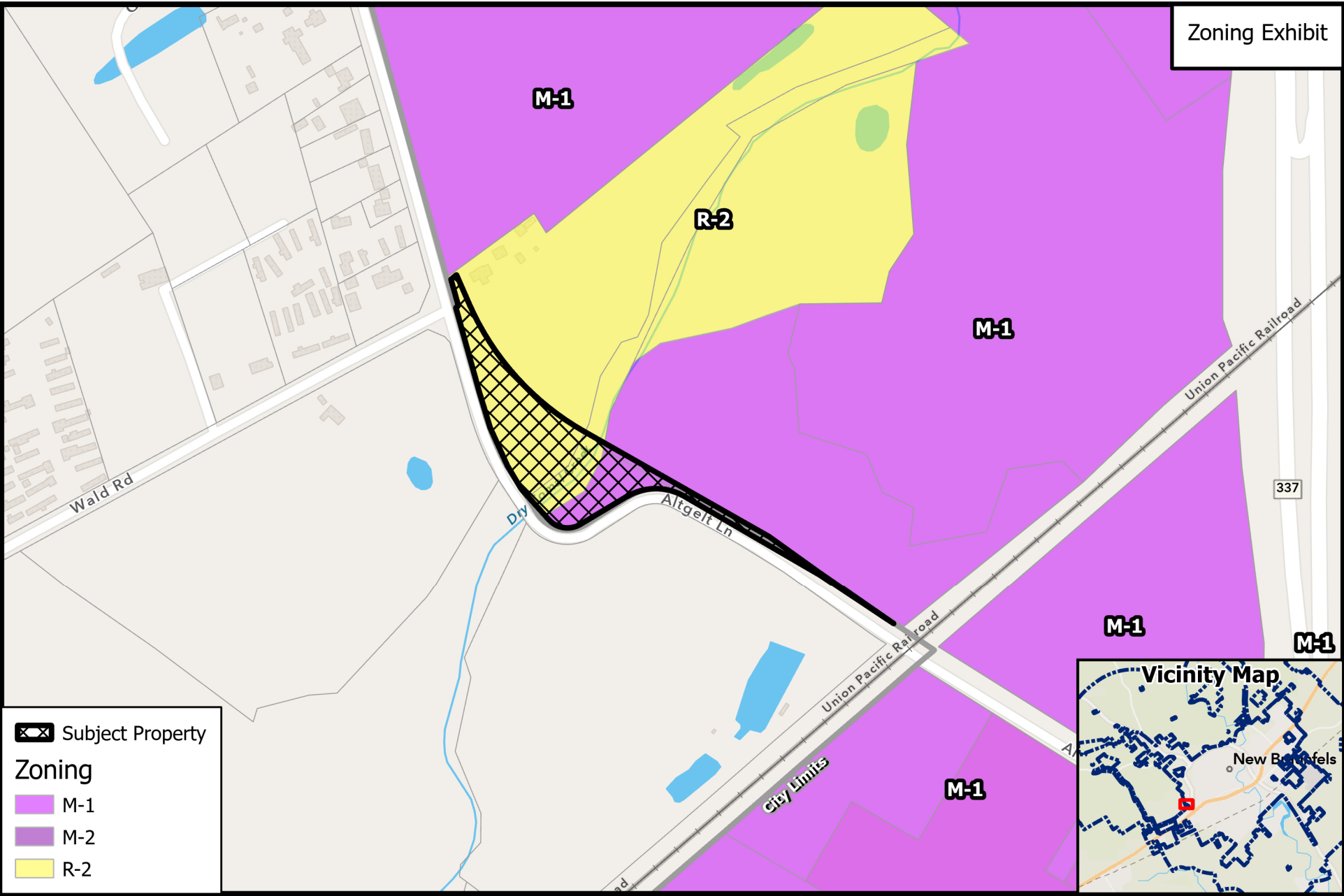


Path: P:\Annexation\Disannexation\Altgelt Ln. - Comal County\GIS\AltgeltDisannexation.aprx

Source: City of New Braunfels Planning  
 Date: 10/17/2024

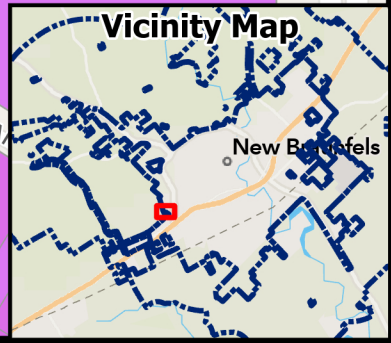
DISCLAIMER: This map and information contained in it were developed exclusively for use by the City of New Braunfels. Any use or reliance on this map by anyone else is at that party's risk and without liability to the City of New Braunfels, its officials or employees for any discrepancies, errors, or variances which may exist.





**Legend**

- Subject Property
- Zoning**
- M-1
- M-2
- R-2



**ORD24-337**  
**Disannexation - Altgelt Ln**

