

## SUP24-117 SUP for Parking Lot

0 240 480  
Feet

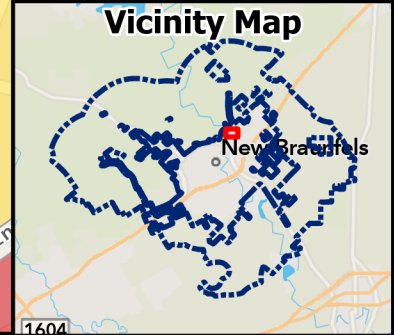
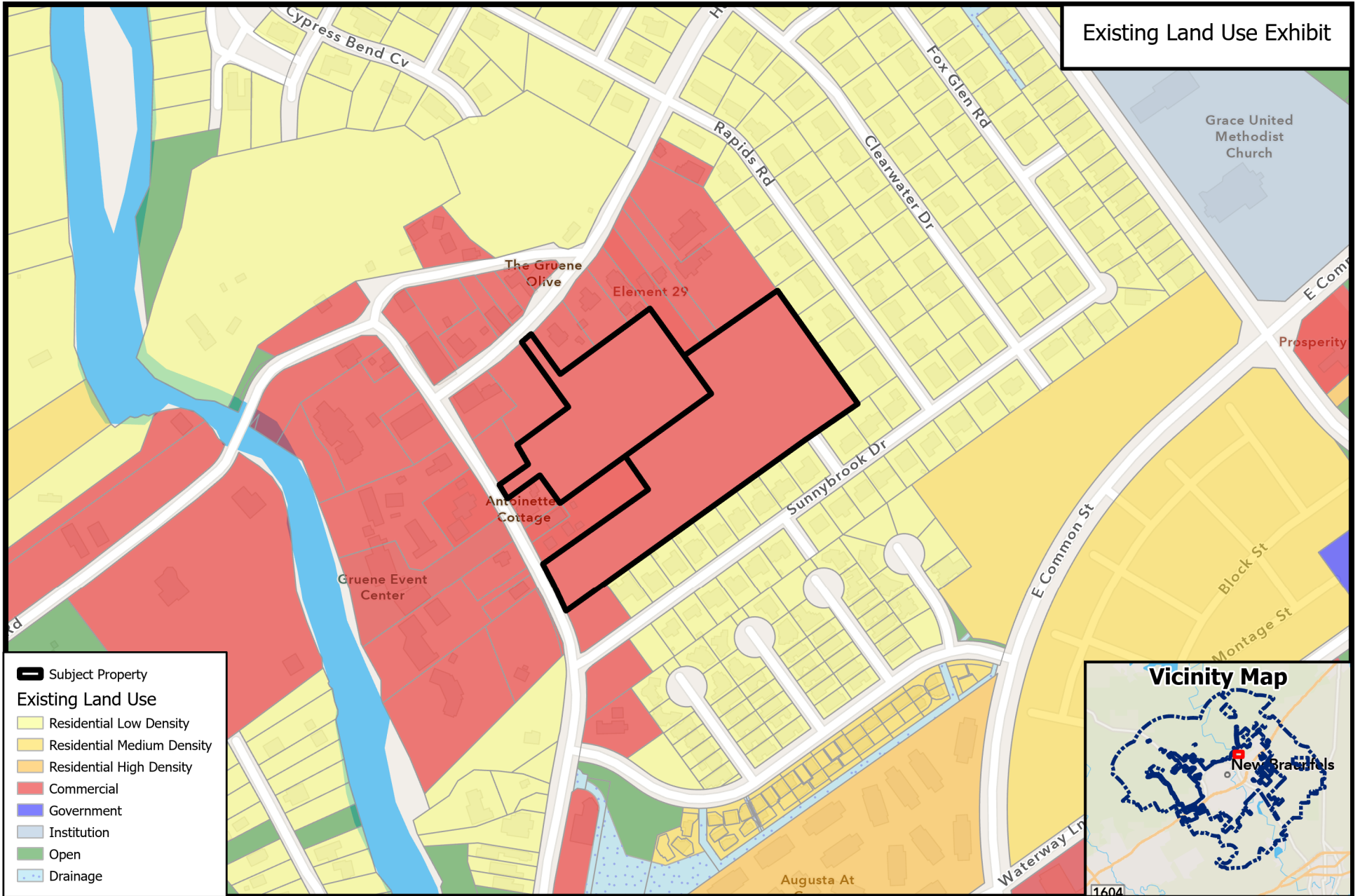


Path:  
P:\ZoneChange & SUPs\2024\SUP24-117 -Gruene Rd - SUP for Parking

Source: City of New Braunfels Planning  
Date: 4/15/2024

DISCLAIMER: This map and information contained in it were developed exclusively for use by the City of New Braunfels. Any use or reliance on this map by anyone else is at that party's risk and without liability to the City of New Braunfels, its officials or employees for any discrepancies, errors, or variances which may exist.





## SUP24-117 SUP for Parking Lot

0 240 480  
Feet



Path:  
P:\ZoneChange & SUPs\2024\SUP24-117 -Gruene Rd - SUP for Parking

Source: City of New Braunfels Planning  
Date: 4/24/2024

DISCLAIMER: This map and information contained in it were developed exclusively for use by the City of New Braunfels. Any use or reliance on this map by anyone else is at that party's risk and without liability to the City of New Braunfels, its officials or employees for any discrepancies, errors, or variances which may exist.



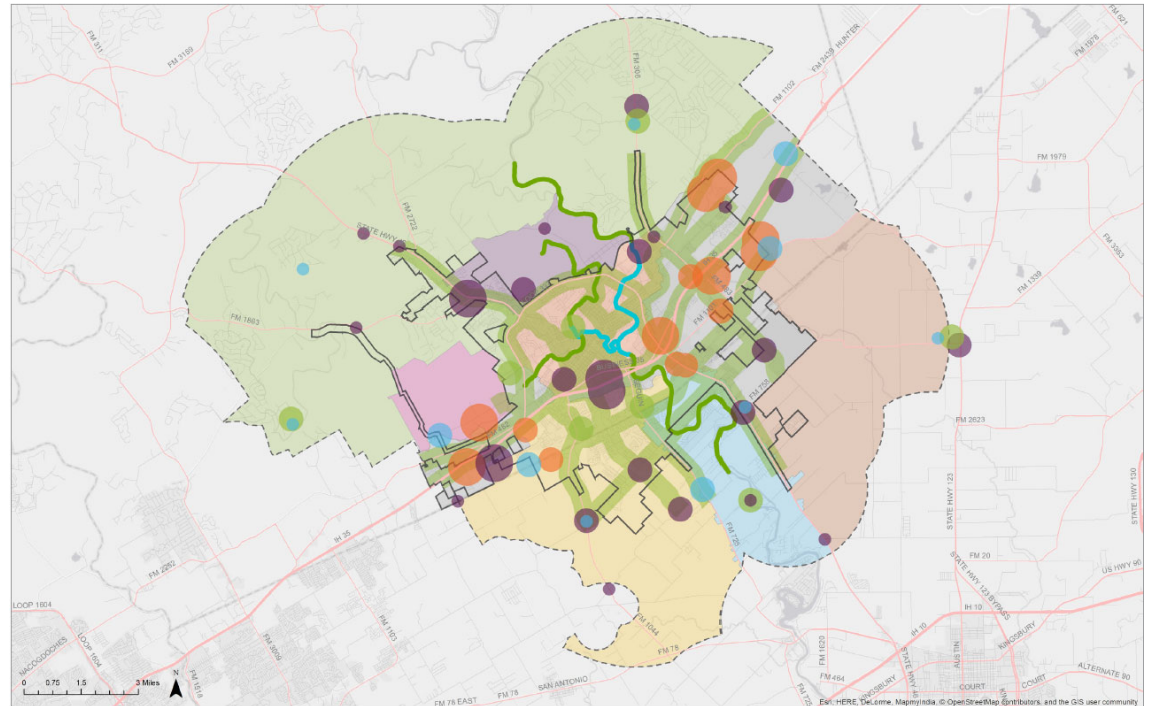


# Envision New Braunfels

A SPECIAL PLACE BY DESIGN

- ◆ Located in the New Braunfels Sub-Area
- ◆ Partially Within Transitional Mixed-Use Corridor
- ◆ Within existing Tourist/Entertainment Center and within a Future Market Center

## Future Land Use Map



- **Action 1.3:** Encourage balanced and fiscally responsible land use patterns
- **Action 1.5:** Promote economic centers by ensuring adequate parking for people to visit businesses/restaurants/shops.
- **Action 1.6:** Incentivize infill development and redevelopment to take advantage of existing infrastructure.
- **Action 3.6:** Pro-actively provide a regulatory environment that remains business and resident friendly
- **Action 3.22:** Encourage venues within walking distance of neighborhoods and schools..
- **Action 5.4:** Incentivize water use reduction and conservation.
- **Action 7.37:** Increase public parking, both for automobiles as well as bicycles.
- **Action 7.38:** Identify possible additional parking areas for Downtown, Gruene, tourist areas and high demand events such as Wurstfest.