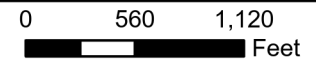
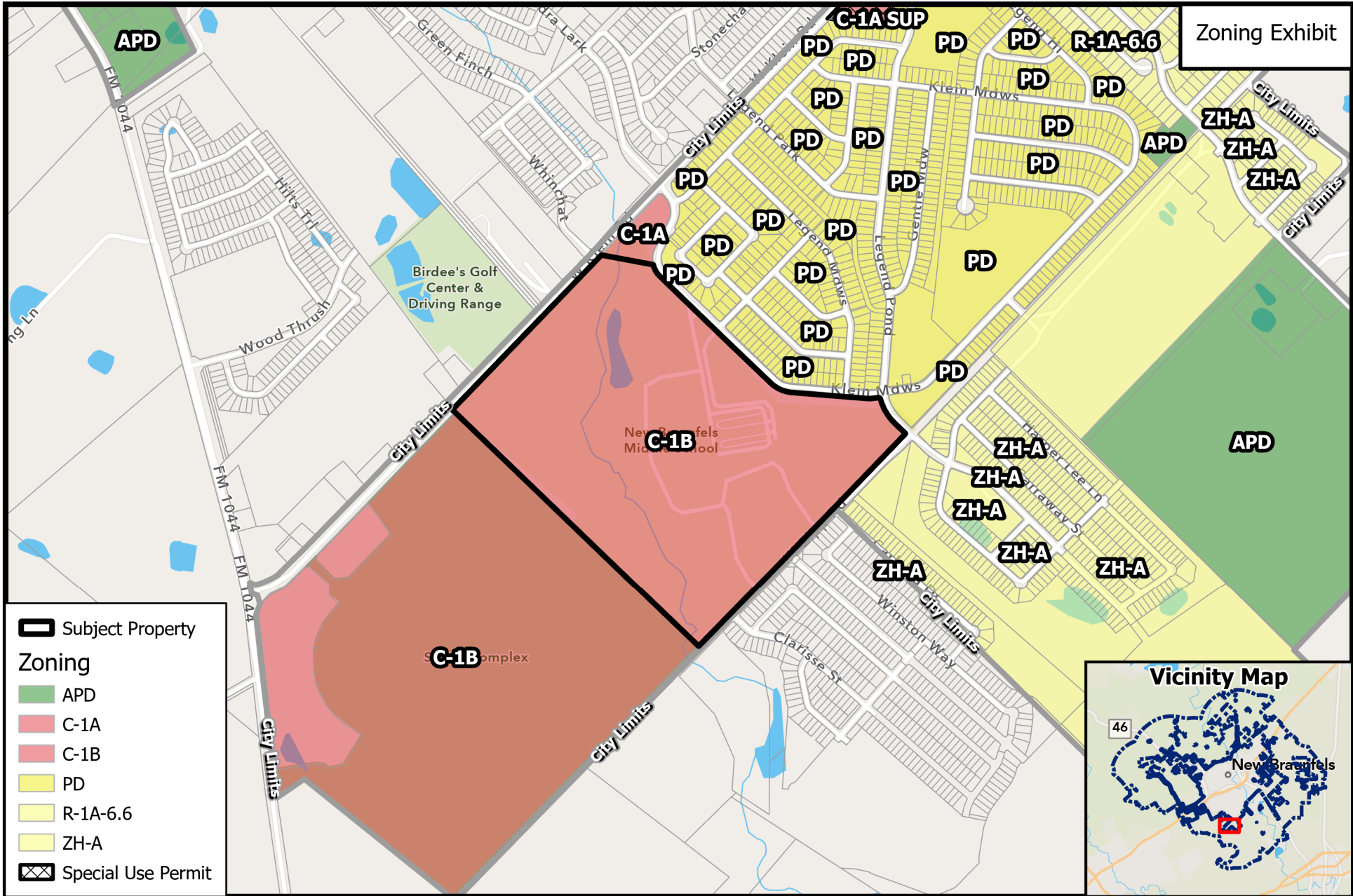


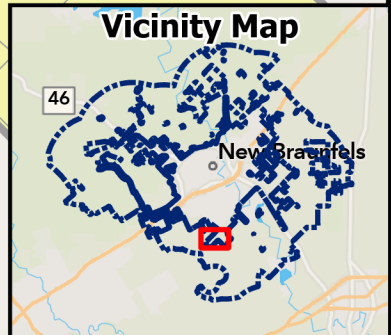
CS26-0073

Alternative Sign Plan - Long Creek High School



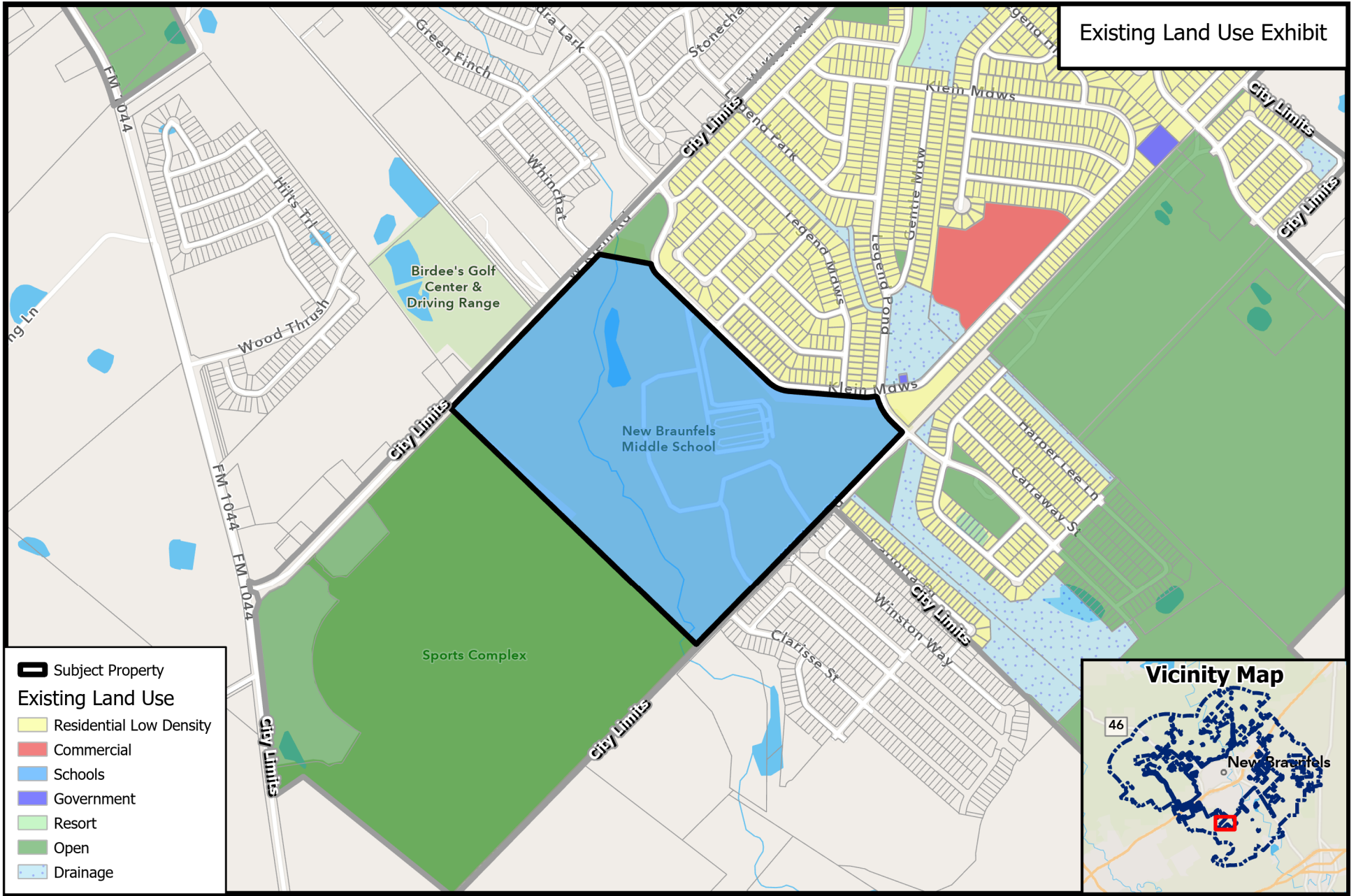


- Subject Property
- Zoning**
- APD
- C-1A
- C-1B
- PD
- R-1A-6.6
- ZH-A
- Special Use Permit



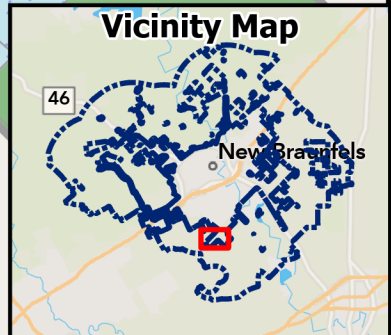
CS26-0073
Alternative Sign Plan - Long Creek High School





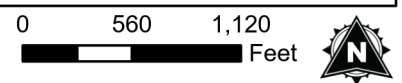
Existing Land Use Exhibit

- Subject Property
- Existing Land Use**
- Residential Low Density
- Commercial
- Schools
- Government
- Resort
- Open
- Drainage



CS26-0073

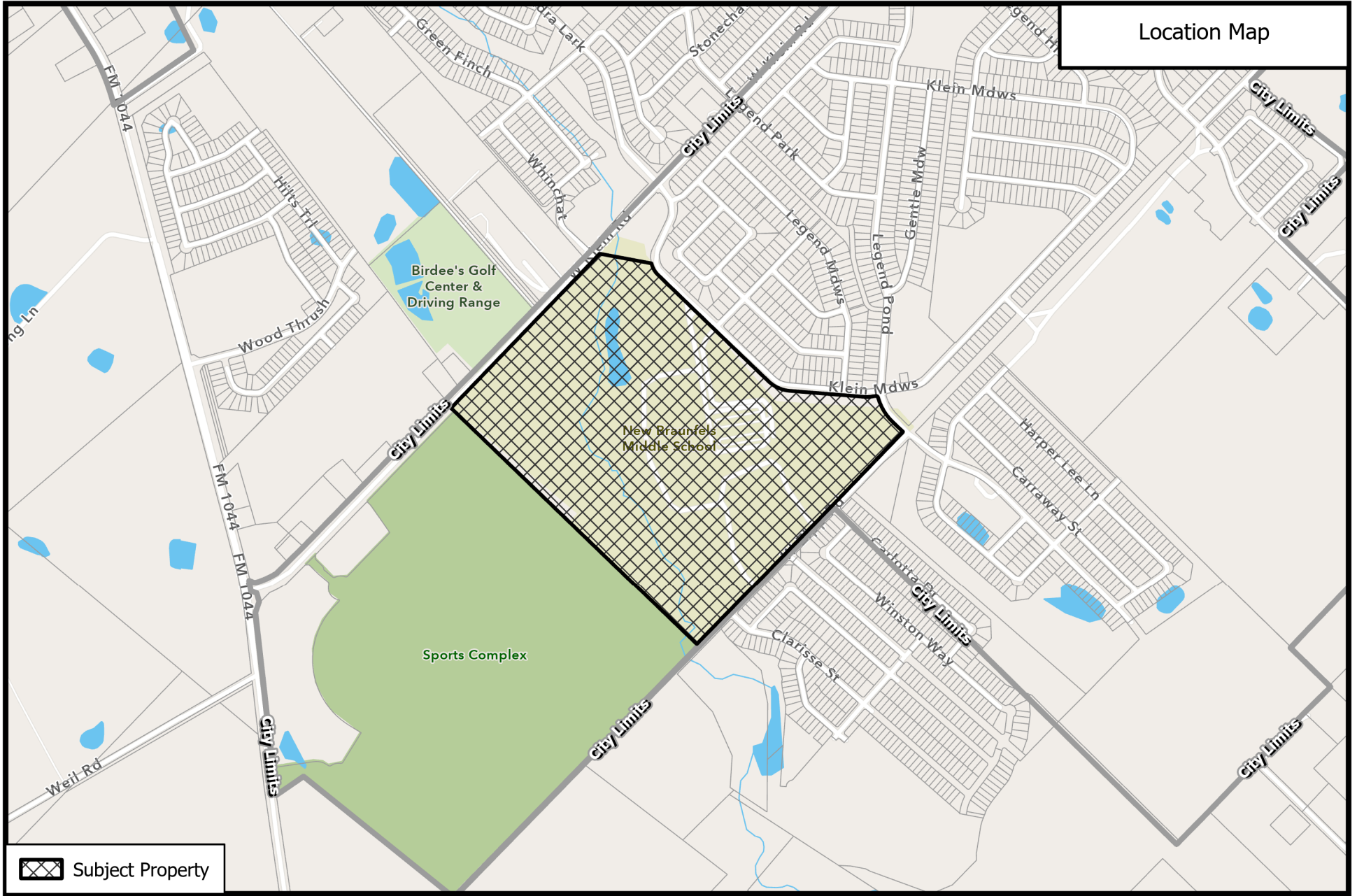
Alternative Sign Plan - Long Creek High School



Path: L:\Boards and Commissions\BOA\2026 Cases\CS26-0073 - Long Creek HS ASP\Staff

Source: City of New Braunfels Planning
Date: 4/1/2026

DISCLAIMER: This map and information contained in it were developed exclusively for use by the City of New Braunfels. Any use or reliance on this map by anyone else is at that party's risk and without liability to the City of New Braunfels, its officials or employees for any discrepancies, errors, or variances which may exist.



CS26-0073

Alternative Sign Plan - Long Creek High School

