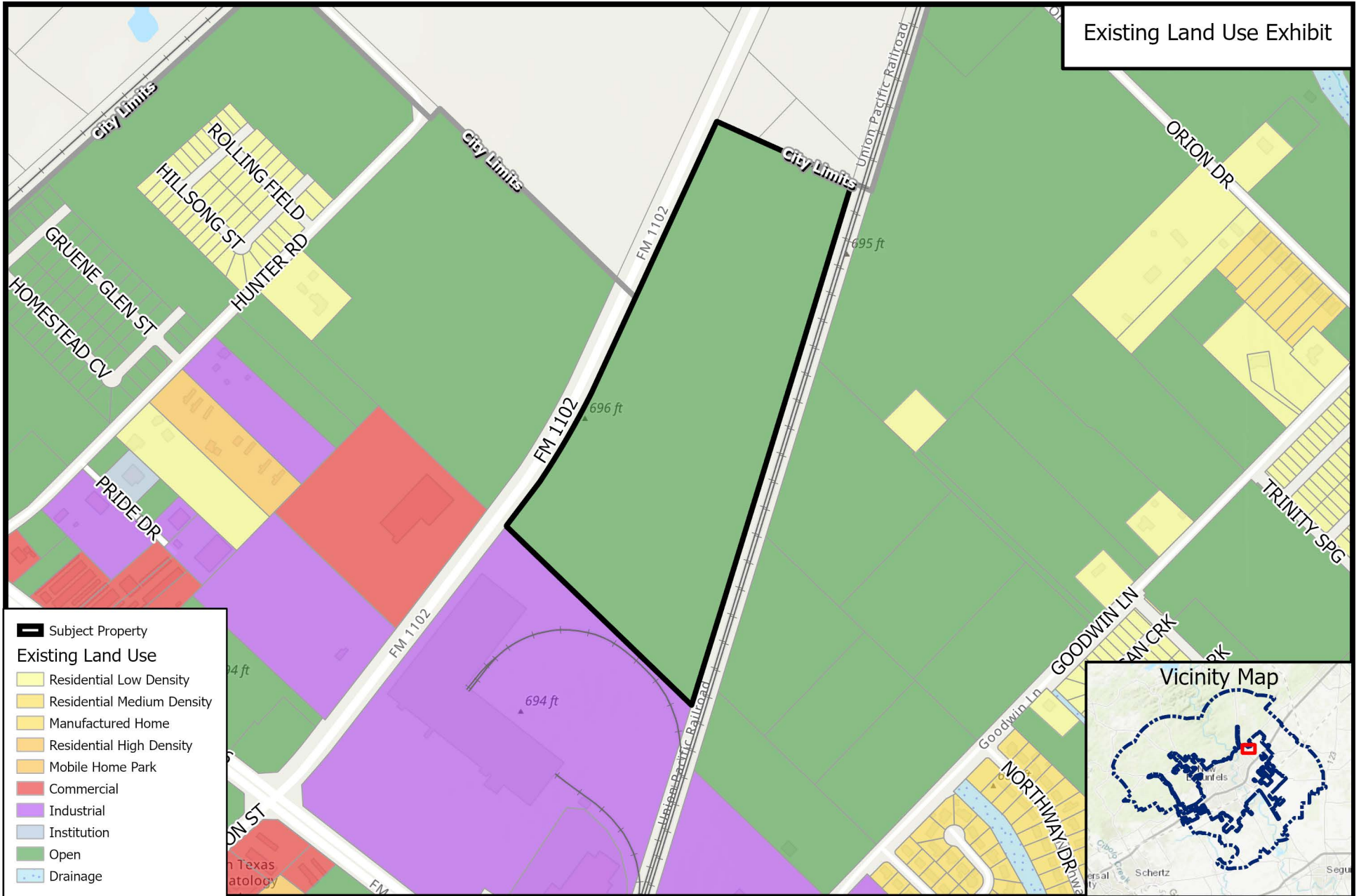


**PZ21-0082**  
**Rezoning from M-1A to MU-B**

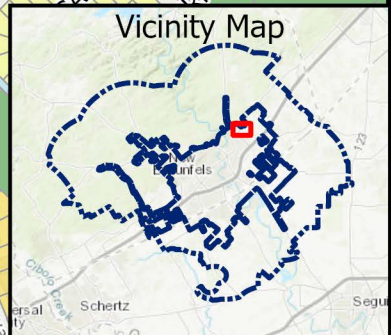




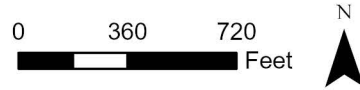


Existing Land Use Exhibit

- Subject Property
- Existing Land Use**
- Residential Low Density
- Residential Medium Density
- Manufactured Home
- Residential High Density
- Mobile Home Park
- Commercial
- Industrial
- Institution
- Open
- Drainage



**PZ21-0082**  
**Rezoning from M-1A to MU-B**



DISCLAIMER: This map and information contained in it were developed exclusively for use by the City of New Braunfels. Any use or reliance on this map by anyone else is at that party's risk and without liability to the City of New Braunfels, its officials or employees for any discrepancies, errors, or variances which may exist.

## EXISTING CENTERS

Centers are the middle, core or heart of an area. It is a point of activity and vitality. Centers come in many sizes and have different purposes or activities within. They may have endangered species habitat or aquifer recharge areas that require additional standards and consideration relating to future growth. It is envisioned that all centers be walkable, connected, and have a mix of uses. These centers must provide adequate infrastructure to support the commercial development present especially mobility and access for pedestrians, bicycles, vehicles and transit. Given the mixed-use nature of these centers, parking should be shared and not detract from the aesthetic of the area.

### EMPLOYMENT CENTER

Employment Centers are mixed-use areas centered around office or industrial uses that can support significant employment.

### MARKET CENTER

Market Centers are mixed-use areas anchored by a retail destination where surrounding residents go to get daily goods and services.

### MEDICAL CENTER

Medical Centers are mixed-use areas centered around a medical destination such as a hospital or clinic.

### CIVIC CENTER

Civic Centers are mixed-use areas centered around a civic destination such as City Hall, a library or a recreation center.

### OUTDOOR RECREATION CENTER

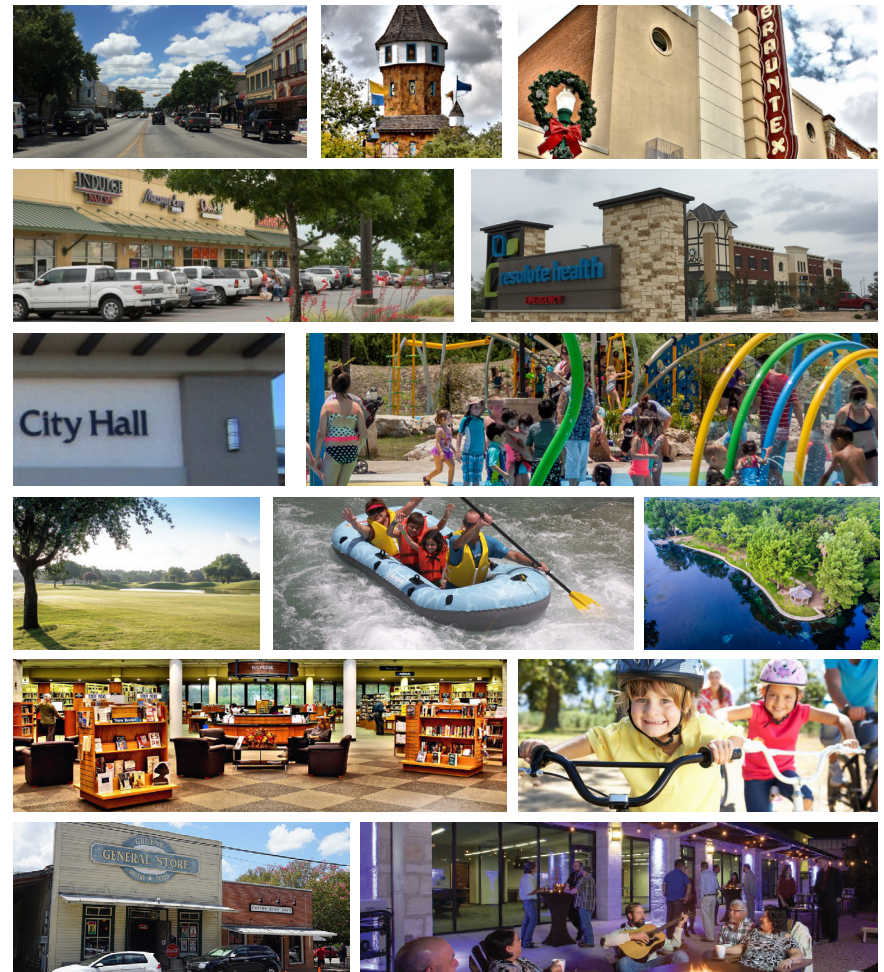
Outdoor Recreation Centers center around a public or private outdoor destination such as Landa Lake.

### EDUCATION CENTER

Education Centers are mixed-use areas centered around an educational destination such as a K-12 school or university/college.

### TOURIST/ENTERTAINMENT CENTER

Tourist/Entertainment Centers are mixed-use areas around an entertainment venue such as Gruene Hall or a tourist destination such as the Tube Chute.







# FUTURE LAND USE PLAN

A future land use plan is how land is envisioned to be. It establishes priorities for more detailed plans (sub area plans) and for detailed topical plans (such as parks and open spaces, trails and roads). It cannot be interpreted without the goals and actions of Envision New Braunfels.

## TRANSITIONAL MIXED-USE CORRIDOR

Transitional Mixed-Use Corridors express an aspiration to retrofit existing auto-dominated retail corridors with a mix of uses and a variety of travel modes over time.

## OUTDOOR RECREATION CENTER

Outdoor Recreation Centers are centered around a public or private outdoor destination like Fischer Park.

## EMPLOYMENT CENTER

Employment Centers are mixed-use areas centered around office or industrial uses that can support significant employment.

## MARKET CENTER

Market Centers are mixed-use areas anchored by a retail destination where surrounding residents go to get daily goods and services.

## CIVIC CENTER

Civic Centers are mixed-use areas centered around a civic destination such as City Hall, a library or a recreation center.

## SUB AREA 1

Sub Area 1 includes the Downtown, Gruene and the Mid-Century or older neighborhoods that surround them. It is home to the natural springs and headwaters of flowing rivers that have attracted New Braunfelsers to the town for centuries.

## SUB AREA 2

Sub Area 2 refers to the neighborhoods and residential enclaves that have grown alongside the Hill Country landscape.

## SUB AREA 3

Sub Area 3 includes a planned community offering a diversity of housing, distinct community centers and preserved Hill Country landscape features.

## SUB AREA 4

At the heart of Sub Area 4 is Fischer Park. Proximity to IH-35, downtown and neighboring communities like McQueeney makes this area highly desirable and accessible.

## SUB AREA 5

Sub Area 5 bridges together many communities east of IH-35. It includes the scenic landscape along both banks of the Guadalupe River between Highway 46 and FM 725.

## SUB AREA 6

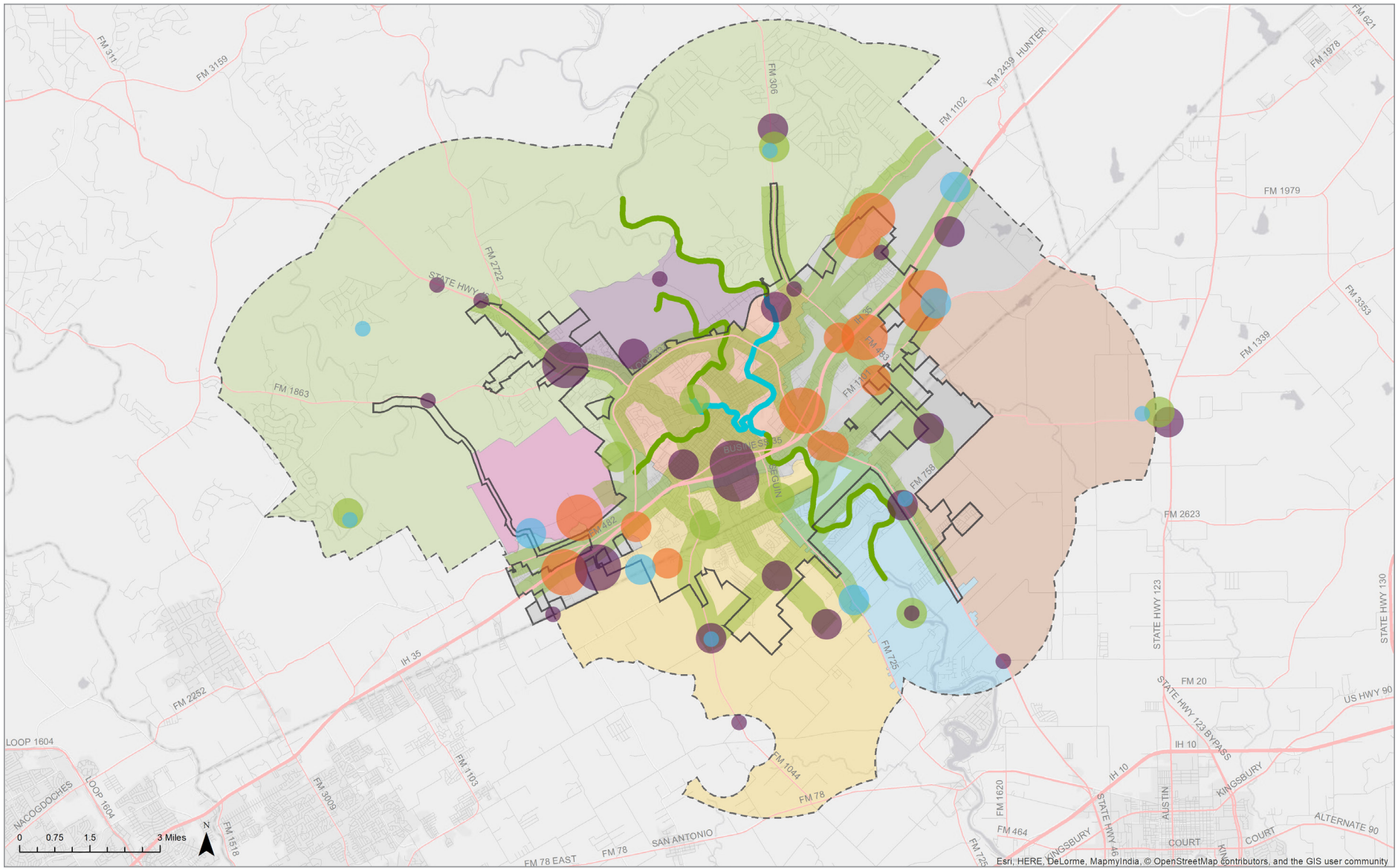
Sub Area 6 expresses an aspiration for conservation communities focused around maintaining and enhancing ecological integrity while allowing some level of development to occur.

## SUB AREA 7

Sub Area 7 includes parts of the city currently being mined for natural resources. These sites may become parks and open space, mixed-use communities or new commercial or entertainment areas in the future.

## SUB AREA 8

This fast-growing Sub Area includes many neighborhoods offering affordable places for young families to live.



A Comprehensive Plan shall not constitute zoning regulations or establish zoning district boundaries. Preferred future growth scenario combines Scenarios A and C per recommendations of the Envision New Braunfels Steering Committee (February 2018). Exact boundaries of sub areas, centers, and corridors may be [zoomed and viewed online](#).