





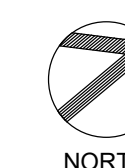


Keyed Notes

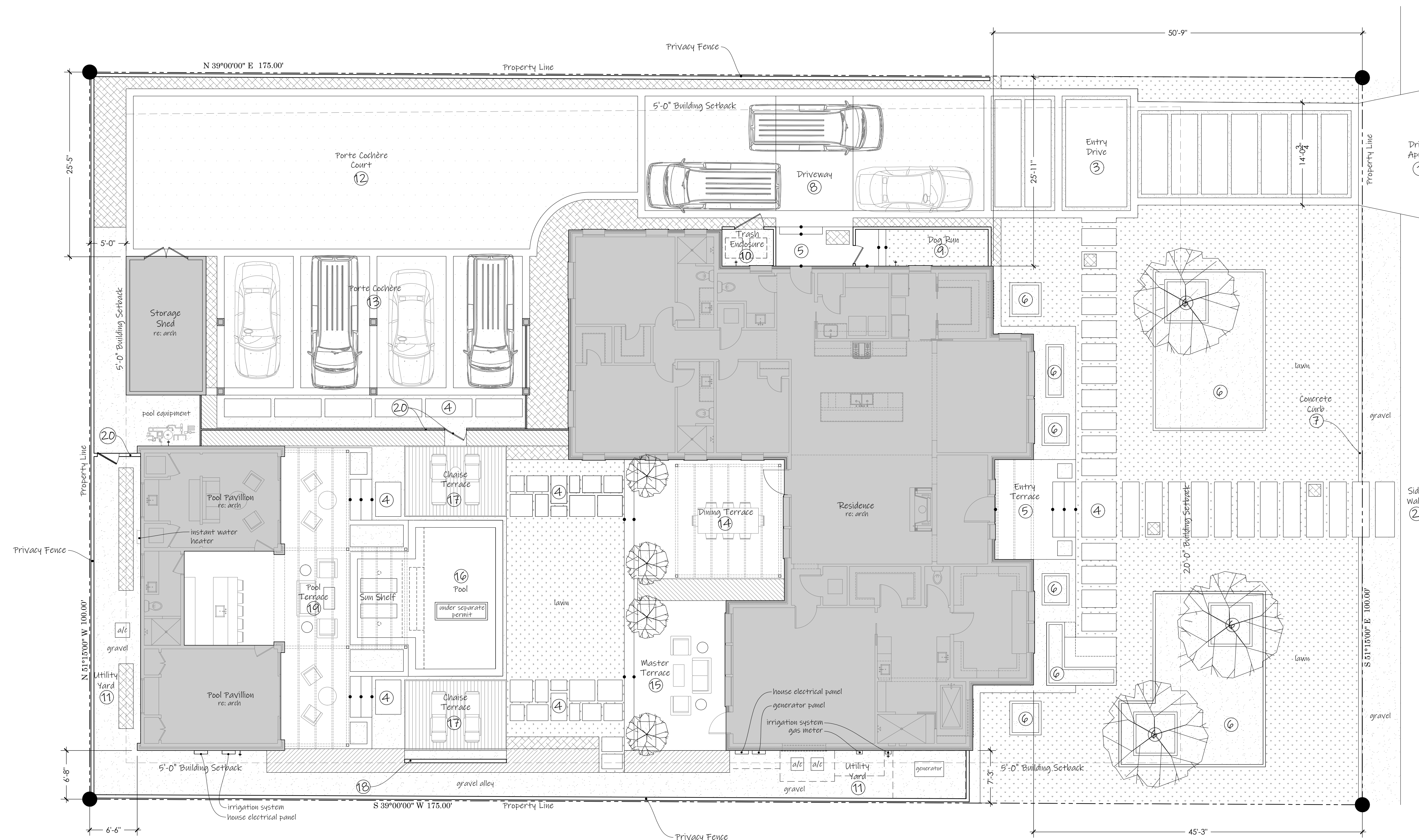
- Driveway Apron
 - Per City of New Braunfels Specifications
 - Re: 2&3/L1.00
- Side Walk
 - Per City of New Braunfels Specifications
 - Re: 2&3/L1.00
- Entry Drive
 - Reinforced Concrete Drive 5" thick with 6" gravel joints & 12" reinforced concrete border
- Stepping Pads
 - 4" thick reinforced concrete stepping pads with lawn joints
- Entry Terrace
 - 12" height reinforced concrete terrace with integral steps
- Raised Concrete Planters
 - Reinforced Board Formed Concrete Planter of varying heights
 - 4" topsoil with landscape filter fabric
 - topped with 1" decorative gravel
- Concrete Curb
 - 6" wide reinforced concrete curb
- Driveway
 - Reinforced Concrete Drive 5" thick with (2) granite crete pads (porous, stabilized decomposed granite) & 12" reinforced concrete border
- Dog Run
 - 6'-0" height fencing & gate to be determined
 - with reinforced concrete steps
 - artificial turf & gravel finish surface
- Trash Enclosure
 - 6'-0" height fencing & gate to be determined
 - with gravel finish surface
- Utility Yard
 - 6'-0" height fencing & gate to be determined
 - with gravel finish surface
- Porte Cochère Court
 - Granite Crete finish surface (porous, stabilized decomposed granite) & 12" reinforced concrete border
- Porte Cochère
 - Granite Crete finish surface (porous, stabilized decomposed granite)
- Dining Terrace
 - 12" height reinforced concrete terrace with integral steps
- Master Terrace
 - 12" height reinforced concrete terrace with integral steps
- Pool/Sun Shelf
 - Under Separate permit
- Chaise Terrace
 - Ipe deck typical deck construction
- Decorative Masonry Wall
 - To be determined
- Pool Terrace
 - 12" height reinforced concrete terrace with integral steps
- Pool Enclosure Gate & Fence
 - Height to meet pool code with self-latching, self-closing hardware

Legend

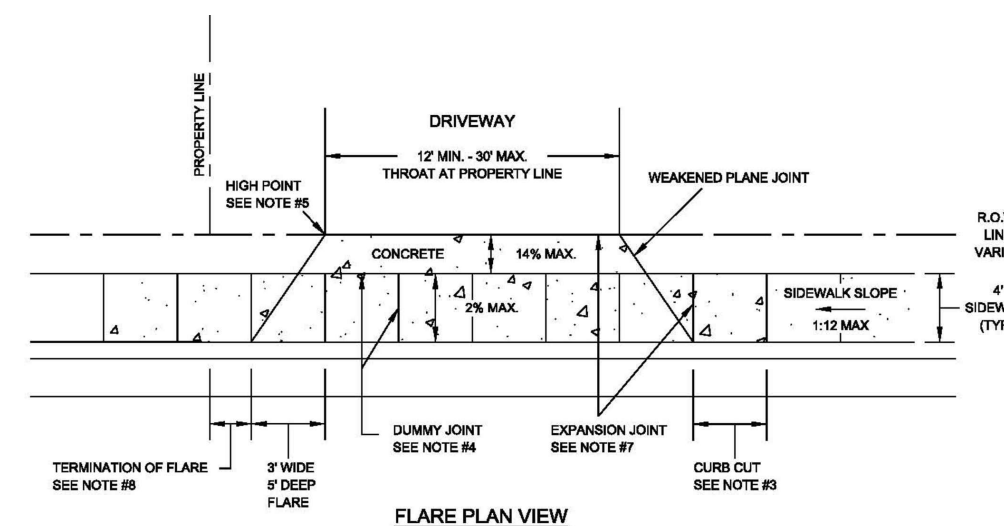
- Granite Crete
- Decorative Gravel
- Lawn/Turf
- Planting Area
- Tall Hedge
- Ornamental Tree



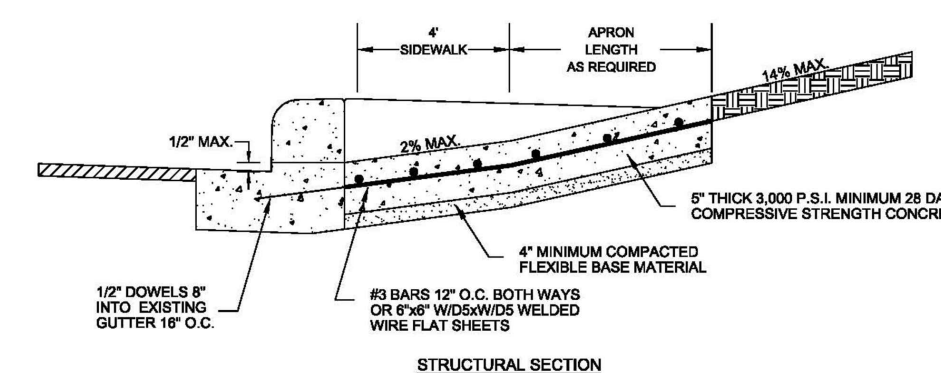
SCALE: 1/8" = 1'-0"



1 Landscape Site Plan
scale: 1/8" = 1'-0"



2 Plan at Drive Apron/Sidewalk
Per City of New Braunfels Specifications
not to scale



3 Section at Drive Apron/Sidewalk
Per City of New Braunfels Specifications
not to scale