

Aerial Exhibit

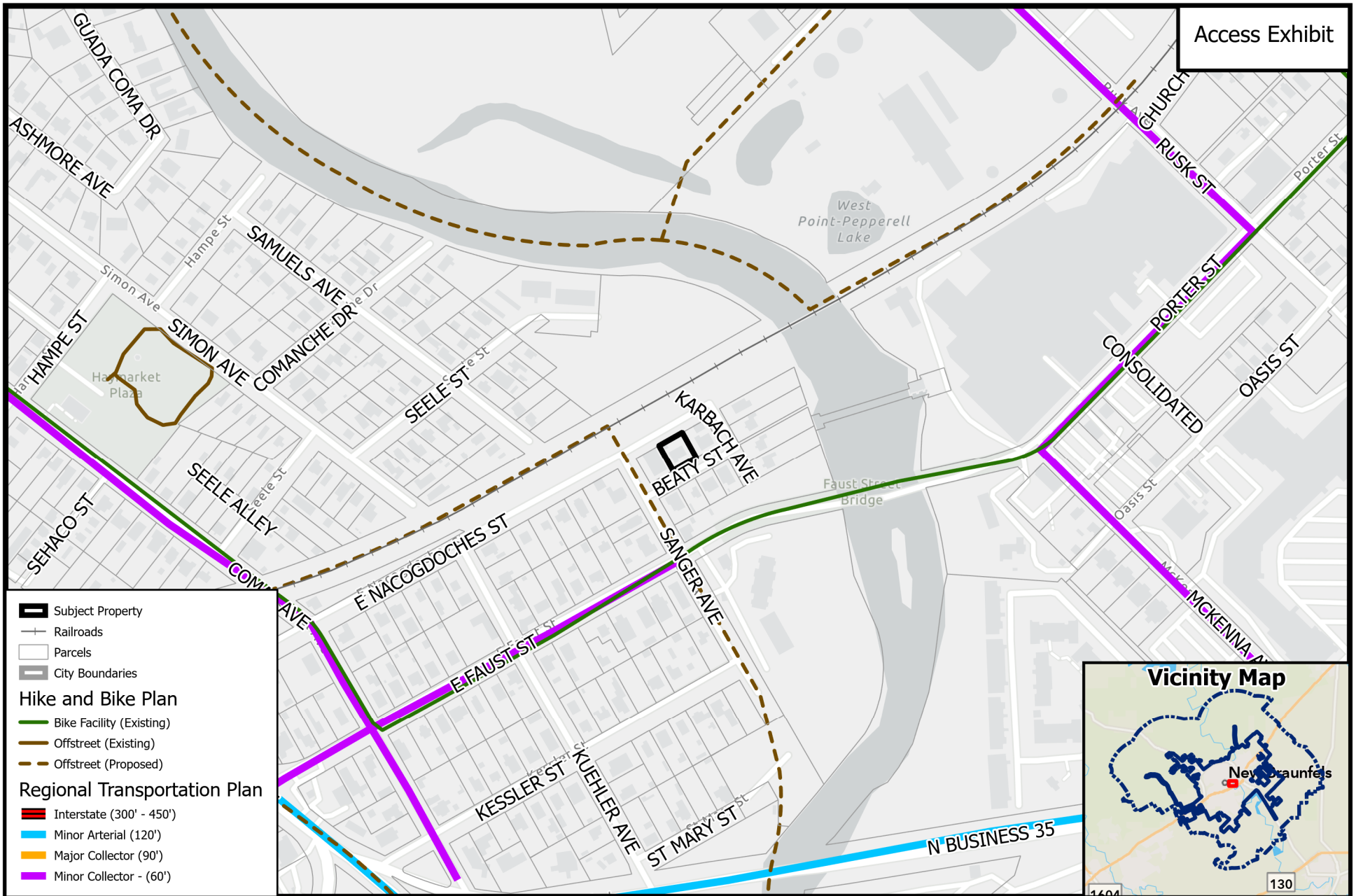


SUP22-116 SUP for STR

Path: P:\ZoneChange-SUP-Replats\2022\SUP22-116 - Gordon - 455 Beaty

Source: City of New Braunfels Planning
Date: 4/12/2022

DISCLAIMER: This map and information contained in it were developed exclusively for use by the City of New Braunfels. Any use or reliance on this map by anyone else is at that party's risk and without liability to the City of New Braunfels, its officials or employees for any discrepancies, errors, or variances which may exist.



SUP22-116 SUP for STR

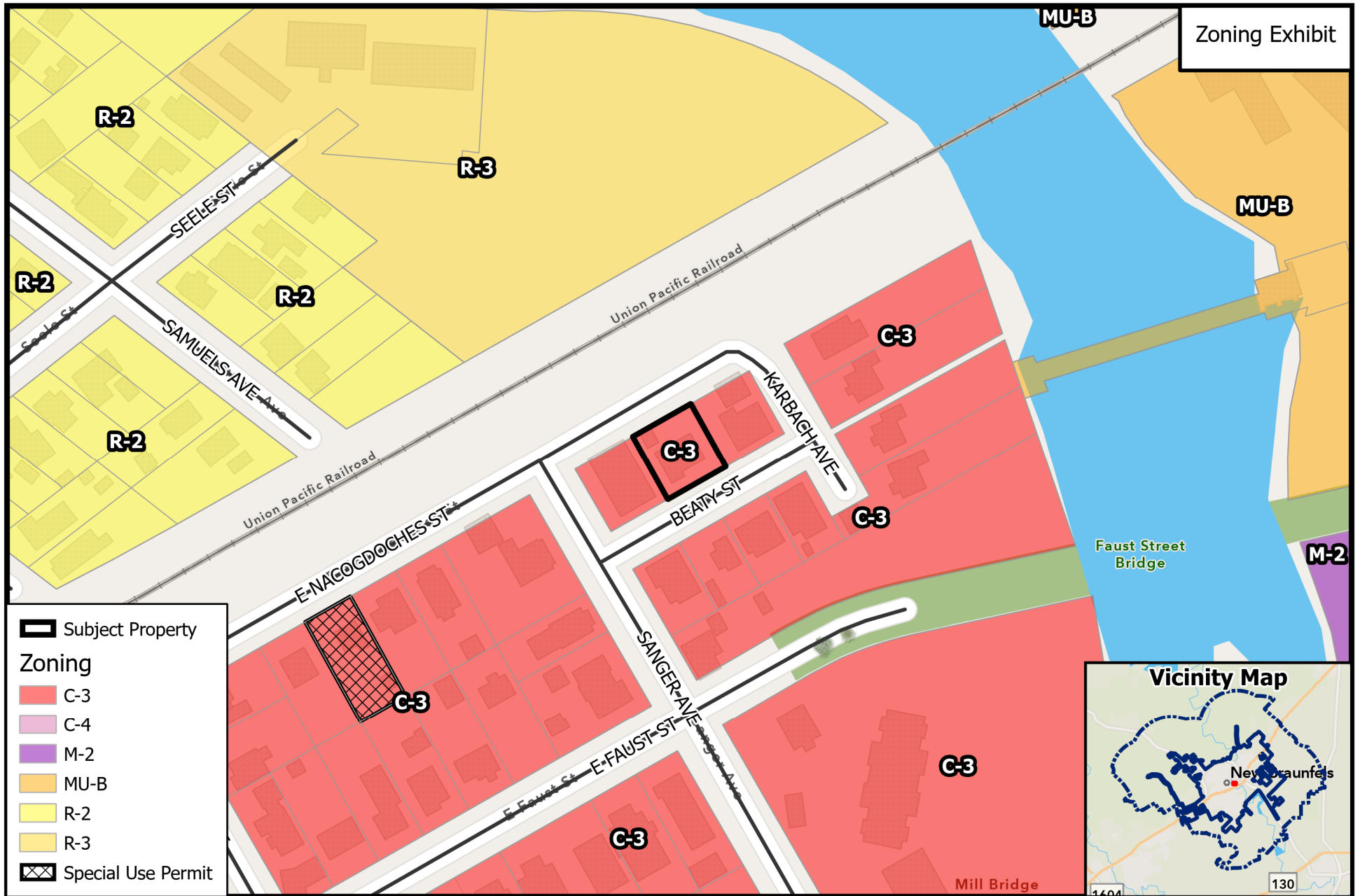
0 220 440
Feet

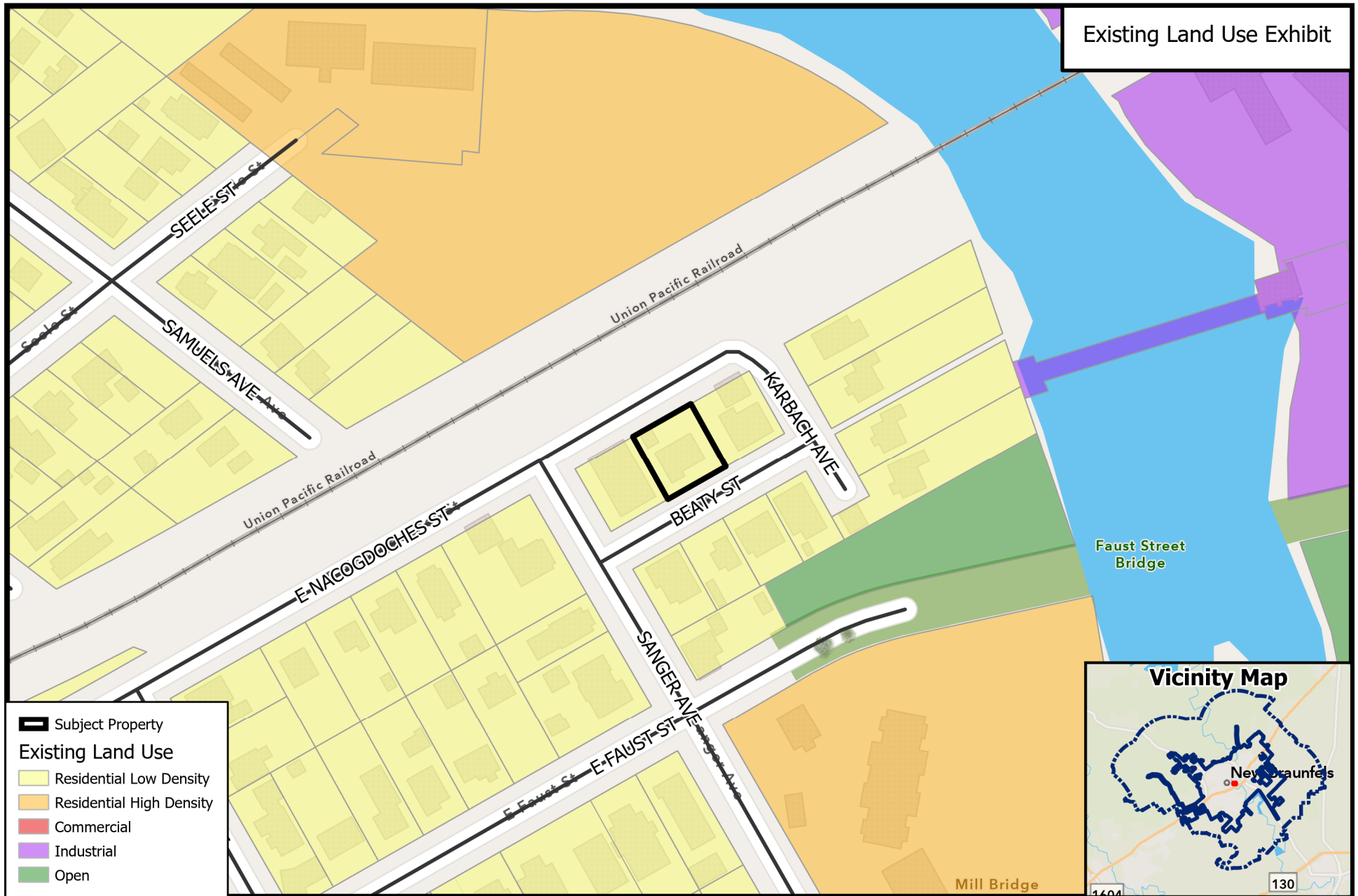


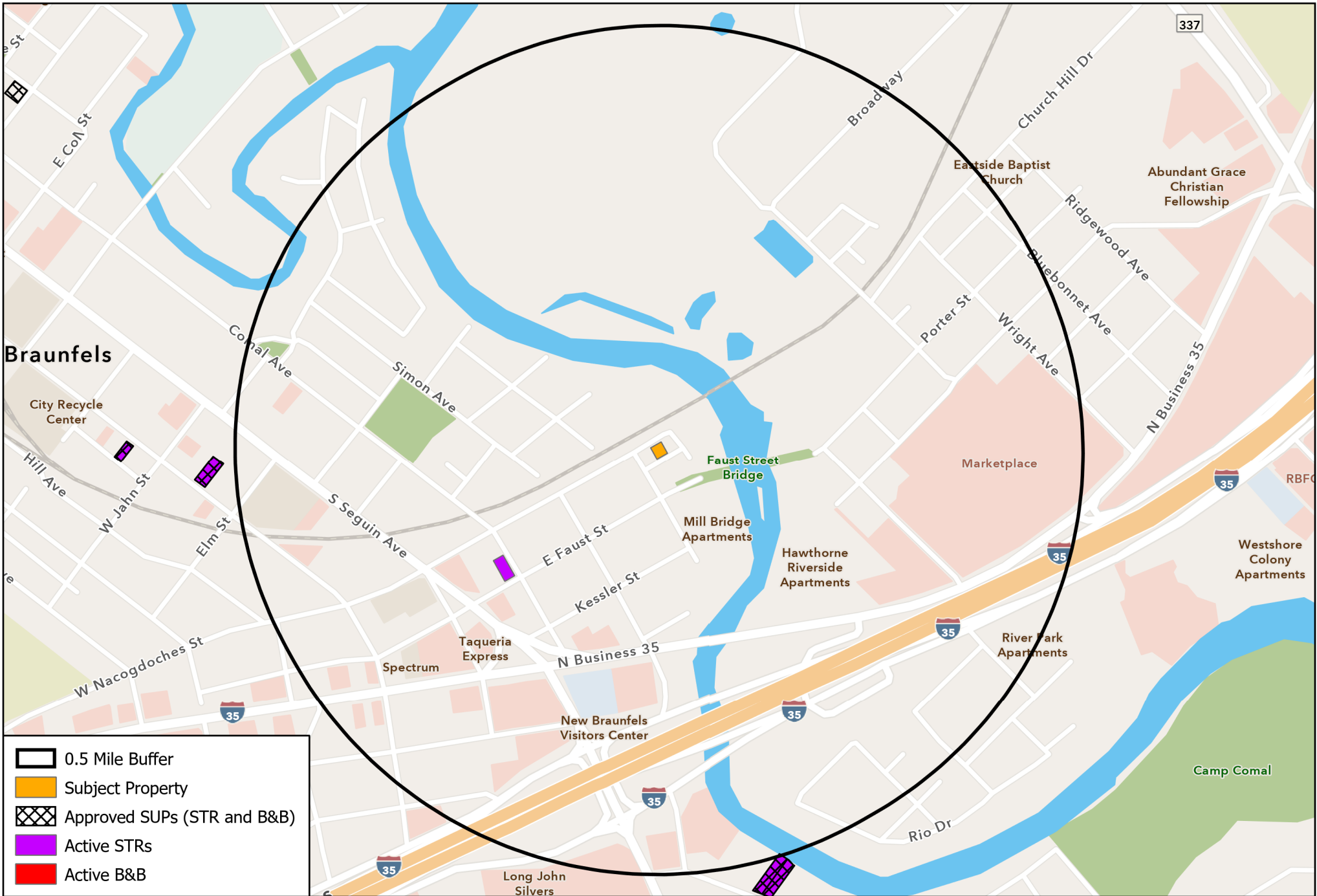
Path:
P:\ZoneChange-SUP-Replats\2022\SUP22-116 - Gordon - 455 Beaty

Source: City of New Braunfels Planning
Date: 4/12/2022

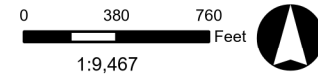
DISCLAIMER: This map and information contained in it were developed exclusively for use by the City of New Braunfels. Any use or reliance on this map by anyone else is at that party's risk and without liability to the City of New Braunfels, its officials or employees for any discrepancies, errors, or variances which may exist.







SUP22-116 SUP for STR





- Located in the New Braunfels Sub-Area
- In a Transitional Mixed-Use Corridor
- Near Existing Tourist / Entertainment, Outdoor Recreation, and Market Centers

- **Action 1.3:** Encourage balanced and fiscally responsible land use patterns.
- **Action 1.14:** Ensure regulations do not unintentionally inhibit the provisions of a variety of flexible and innovative lodging options and attractions.