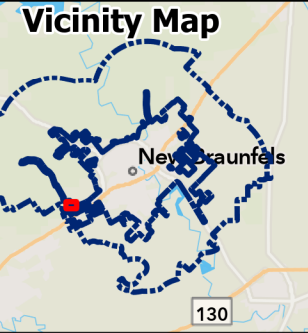
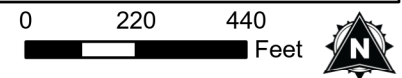


Aerial Exhibit

▭ Subject Property  
**Floodplain**  
▭ Floodway  
▭ 1% Annual Chance Flood Hazard



**PZ22-0172**  
**Zone Change: R-2 to M-2A with an SUP to Allow Outdoor Music**



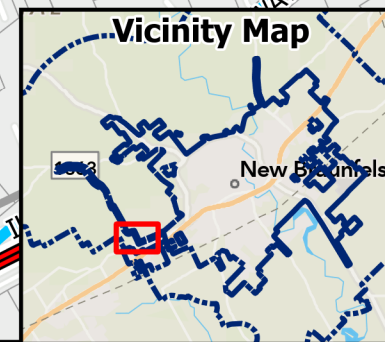
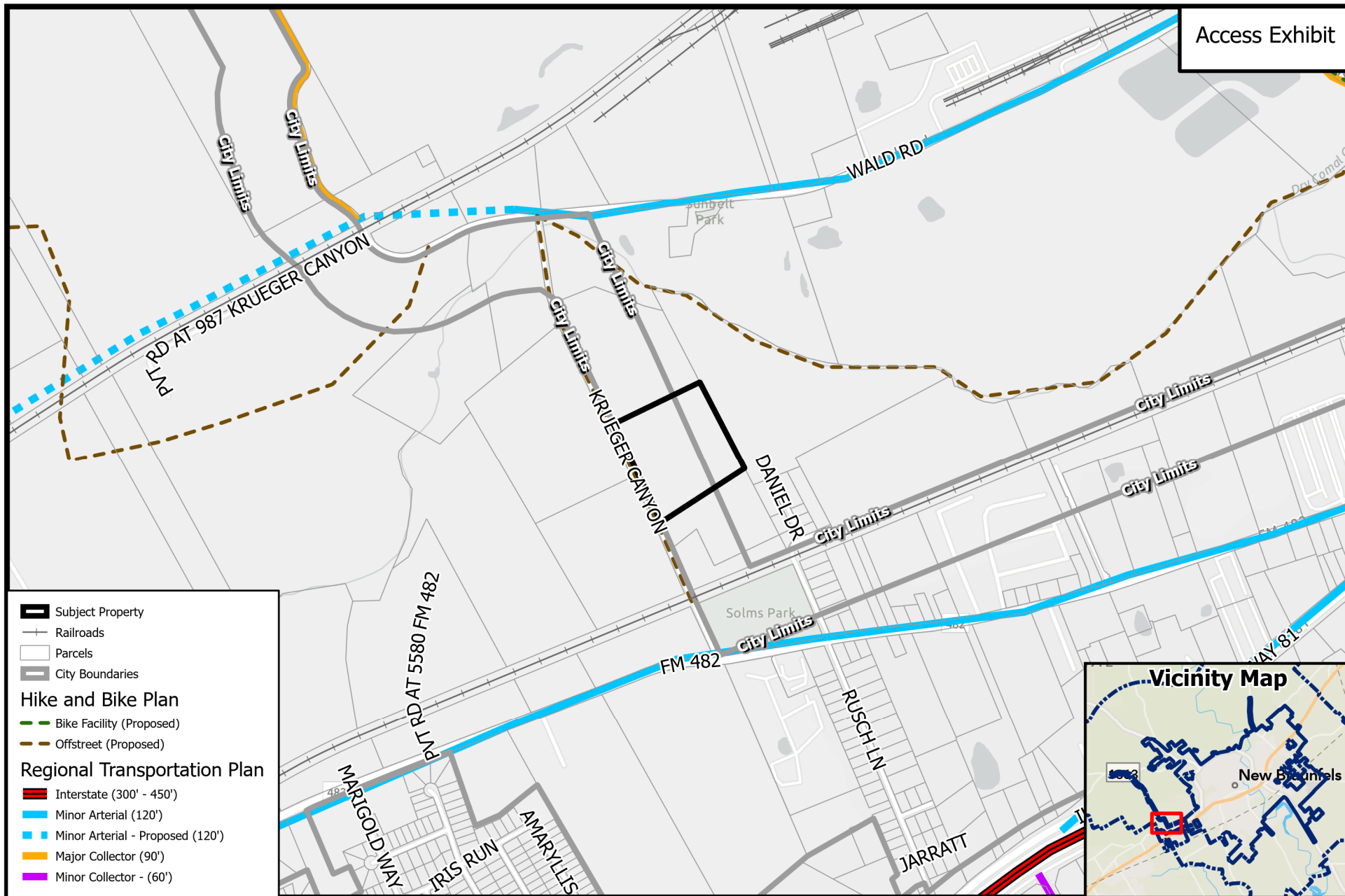
Path:  
 \\chfs-1\Departments\Planning\ZoneChange-SUP-Replats\2022\PZ22-0172 - Golden - 624

Source: City of New Braunfels Planning  
 Date: 5/20/2022

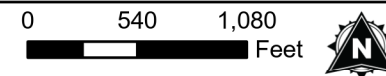
DISCLAIMER: This map and information contained in it were developed exclusively for use by the City of New Braunfels. Any use or reliance on this map by anyone else is at that party's risk and without liability to the City of New Braunfels, its officials or employees for any discrepancies, errors, or variances which may exist.



Access Exhibit



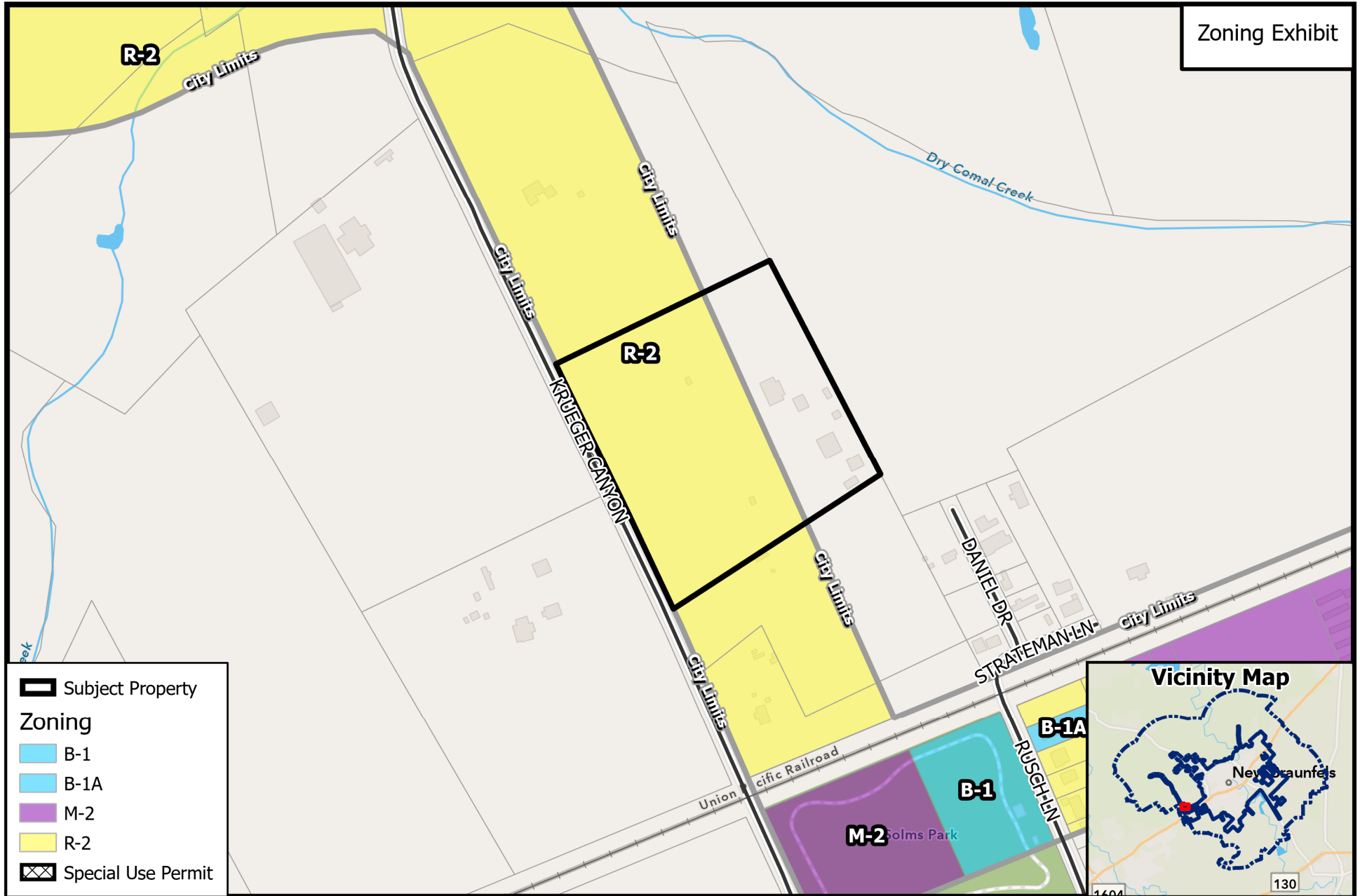
**PZ22-0172**  
**Zone Change: R-2 to M-2A with an SUP to Allow Outdoor Music**

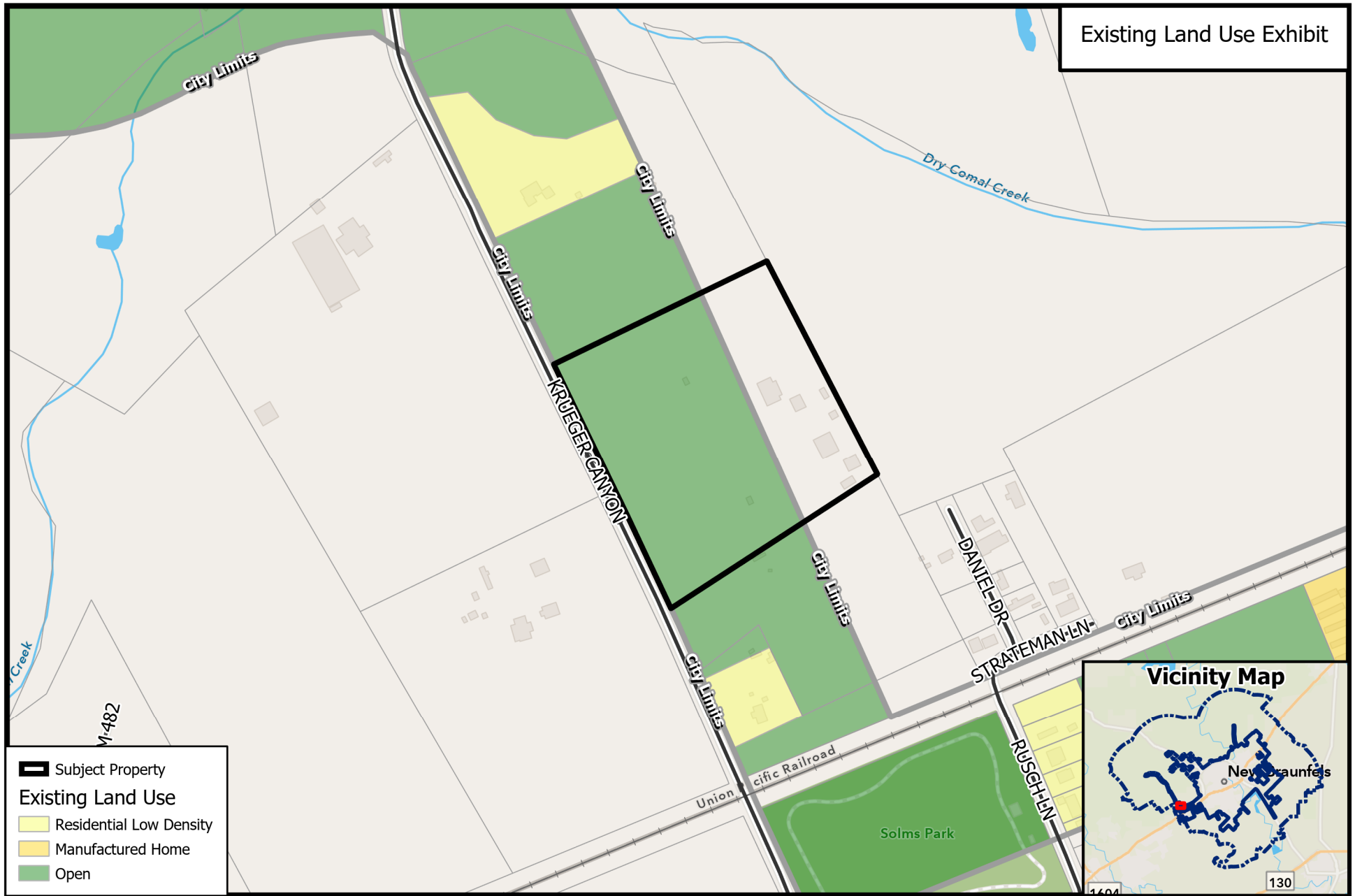


Path: \\chfs-1\Departments\Planning\ZoneChange-SUP-Replats\2022\PZ22-0172 - Golden - 624

Source: City of New Braunfels Planning  
 Date: 5/20/2022

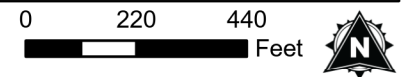
DISCLAIMER: This map and information contained in it were developed exclusively for use by the City of New Braunfels. Any use or reliance on this map by anyone else is at that party's risk and without liability to the City of New Braunfels, its officials or employees for any discrepancies, errors, or variances which may exist.





**PZ22-0172**

**Zone Change: R-2 to M-2A with an SUP to Allow Outdoor Music**



Path: \\chfs-1\Departments\Planning\ZoneChange-SUP-Replats\2022\PZ22-0172 - Golden - 624

Source: City of New Braunfels Planning  
Date: 5/20/2022

DISCLAIMER: This map and information contained in it were developed exclusively for use by the City of New Braunfels. Any use or reliance on this map by anyone else is at that party's risk and without liability to the City of New Braunfels, its officials or employees for any discrepancies, errors, or variances which may exist.





- **Action 1.3:** Encourage balanced and fiscally responsible land use patterns.
- **Action 1.8** Concentrate future investment in industrial and employment centers near existing and emerging hubs, such as the airport; and along existing high capacity transportation networks, such as Interstate Highway 35.
- **Action 3.21** Enhance local recreational venues.