

PZ22-0268

Zone Change: C-3 AH & APD AH to MU-A AH

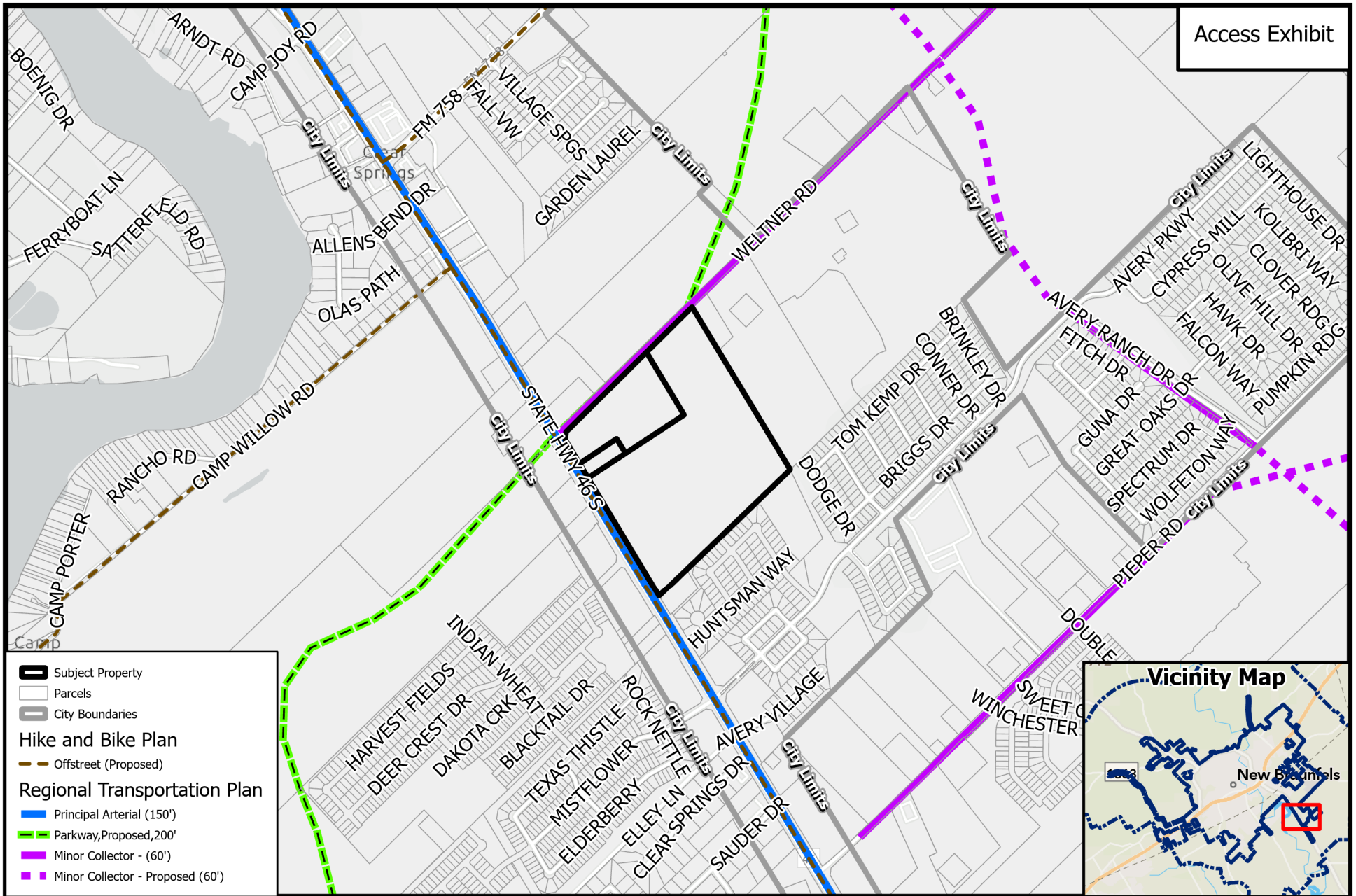
0 900 1,800
Feet



Path: P:\ZoneChange-SUP-Replats\2022\PZ22-0268 - HKEK - 1983 SH 46 S - Zone

Source: City of New Braunfels Planning
Date: 7/13/2022

DISCLAIMER: This map and information contained in it were developed exclusively for use by the City of New Braunfels. Any use or reliance on this map by anyone else is at that party's risk and without liability to the City of New Braunfels, its officials or employees for any discrepancies, errors, or variances which may exist.



PZ22-0268
Zone Change: C-3 AH & APD AH to MU-A AH

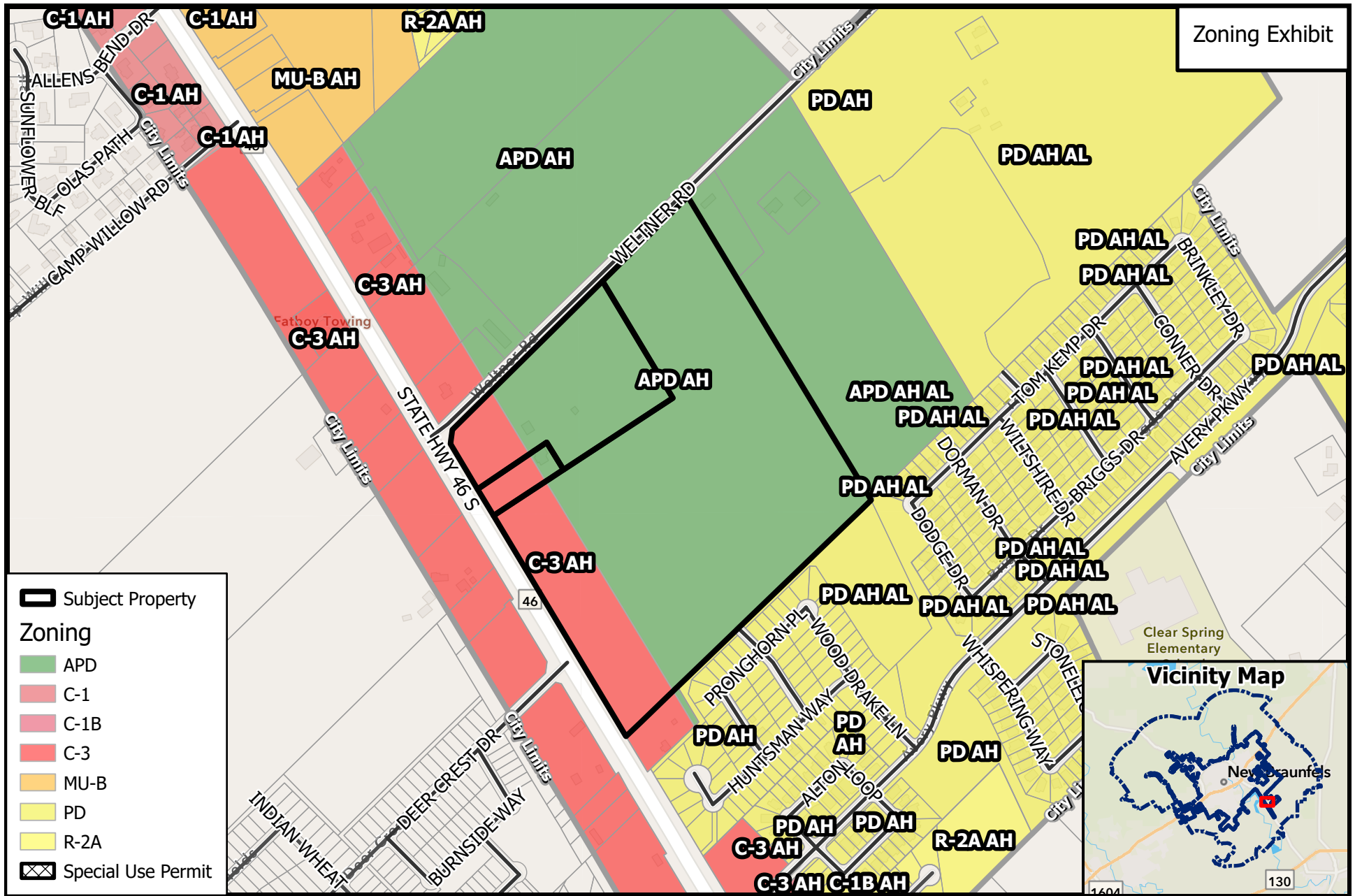
0 675 1,350
 Feet

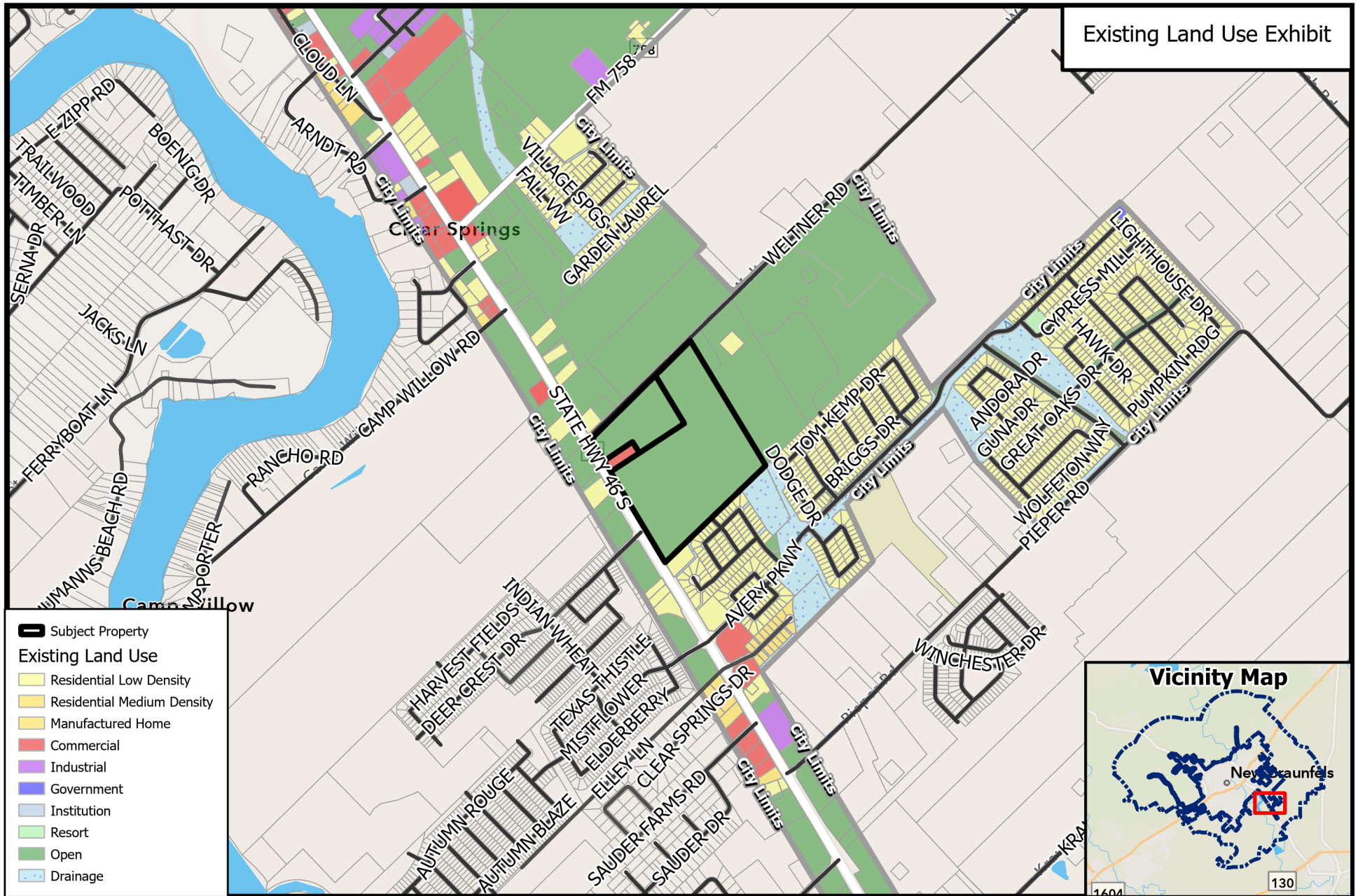


Path:
 P:\ZoneChange-SUP-Replats\2022\PZ22-0268 - HKEK - 1983 SH 46 S - Zone

Source: City of New Braunfels Planning
 Date: 7/13/2022

DISCLAIMER: This map and information contained in it were developed exclusively for use by the City of New Braunfels. Any use or reliance on this map by anyone else is at that party's risk and without liability to the City of New Braunfels, its officials or employees for any discrepancies, errors, or variances which may exist.





PZ22-0268
Zone Change: C-3 AH & APD AH to MU-A AH

0 880 1,760
 Feet



Path:
 P:\ZoneChange-SUP-Replats\2022\PZ22-0268 - HKEK - 1983 SH 46 S - Zone

Source: City of New Braunfels Planning
 Date: 7/13/2022

DISCLAIMER: This map and information contained in it were developed exclusively for use by the City of New Braunfels. Any use or reliance on this map by anyone else is at that party's risk and without liability to the City of New Braunfels, its officials or employees for any discrepancies, errors, or variances which may exist.



- **Action 1.3:** Encourage balanced and fiscally responsible land use patterns.
- **Action 1.6:** Incentivize infill development and redevelopment to take advantage of existing infrastructure.
- **Action 3.1:** Plan for healthy jobs/housing balance.
- **Action 3.21:** Enhance local recreational venues.
- **Action 3.3:** Balance commercial centers with stable neighborhoods.