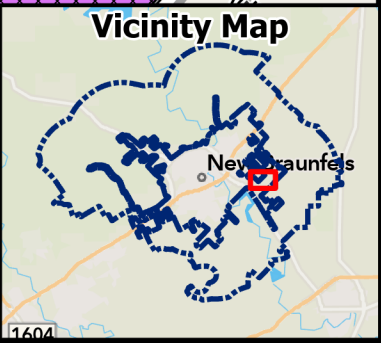


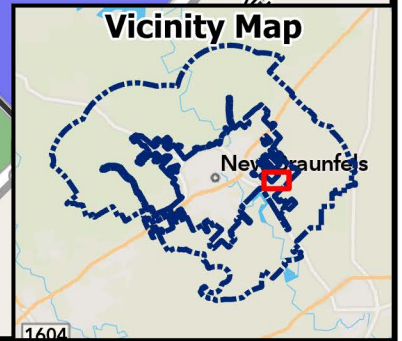
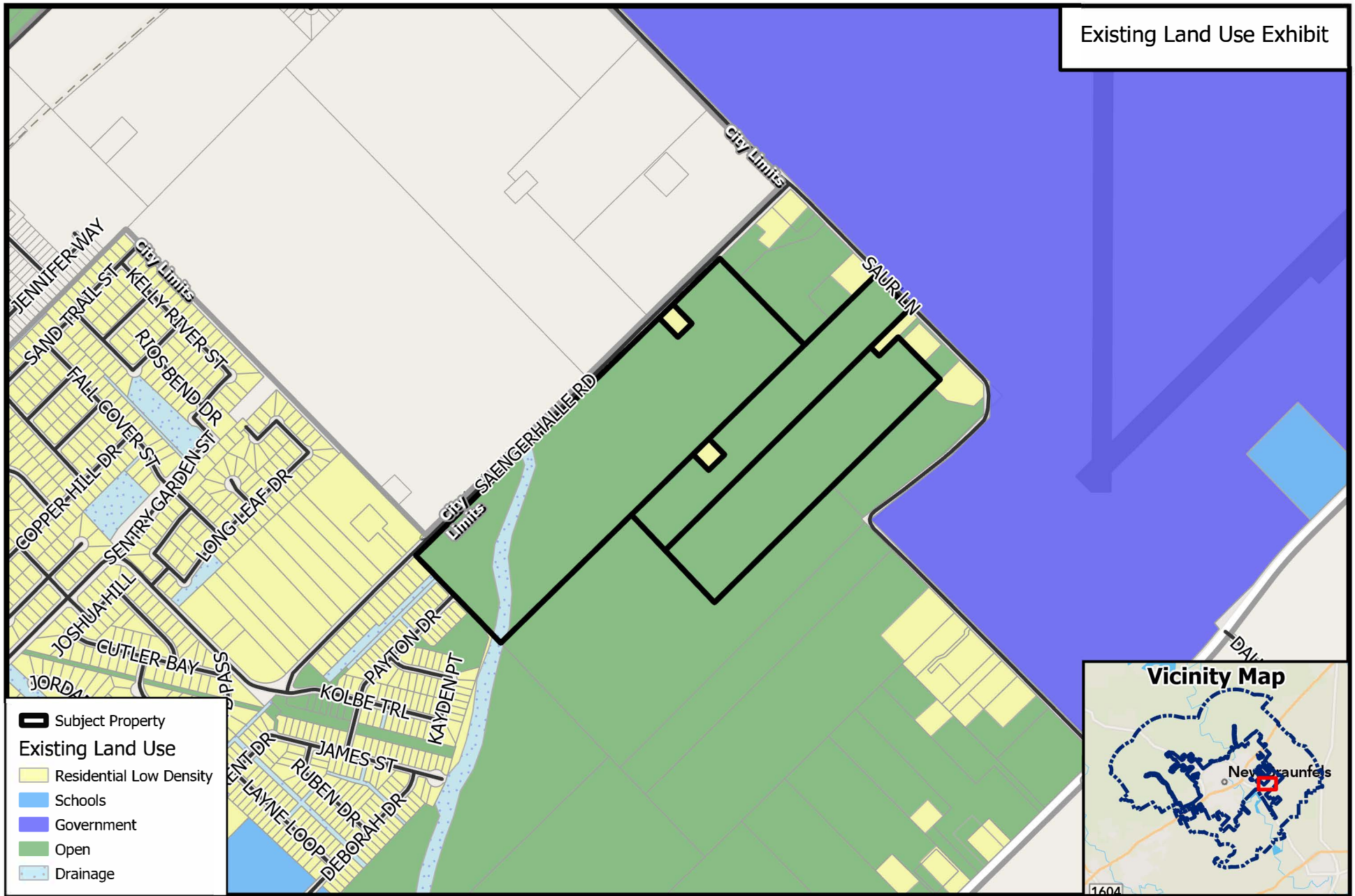
PZ23-0352
APD to R-3L & R-3H

Path: \\chfs-1\Departments\Planning\ZoneChange & SUPs\2023\PZ23-0352 - Saur Ln - APD to

Source: City of New Braunfels Planning
 Date: 10/16/2023

DISCLAIMER: This map and information contained in it were developed exclusively for use by the City of New Braunfels. Any use or reliance on this map by anyone else is at that party's risk and without liability to the City of New Braunfels, its officials or employees for any discrepancies, errors, or variances which may exist.





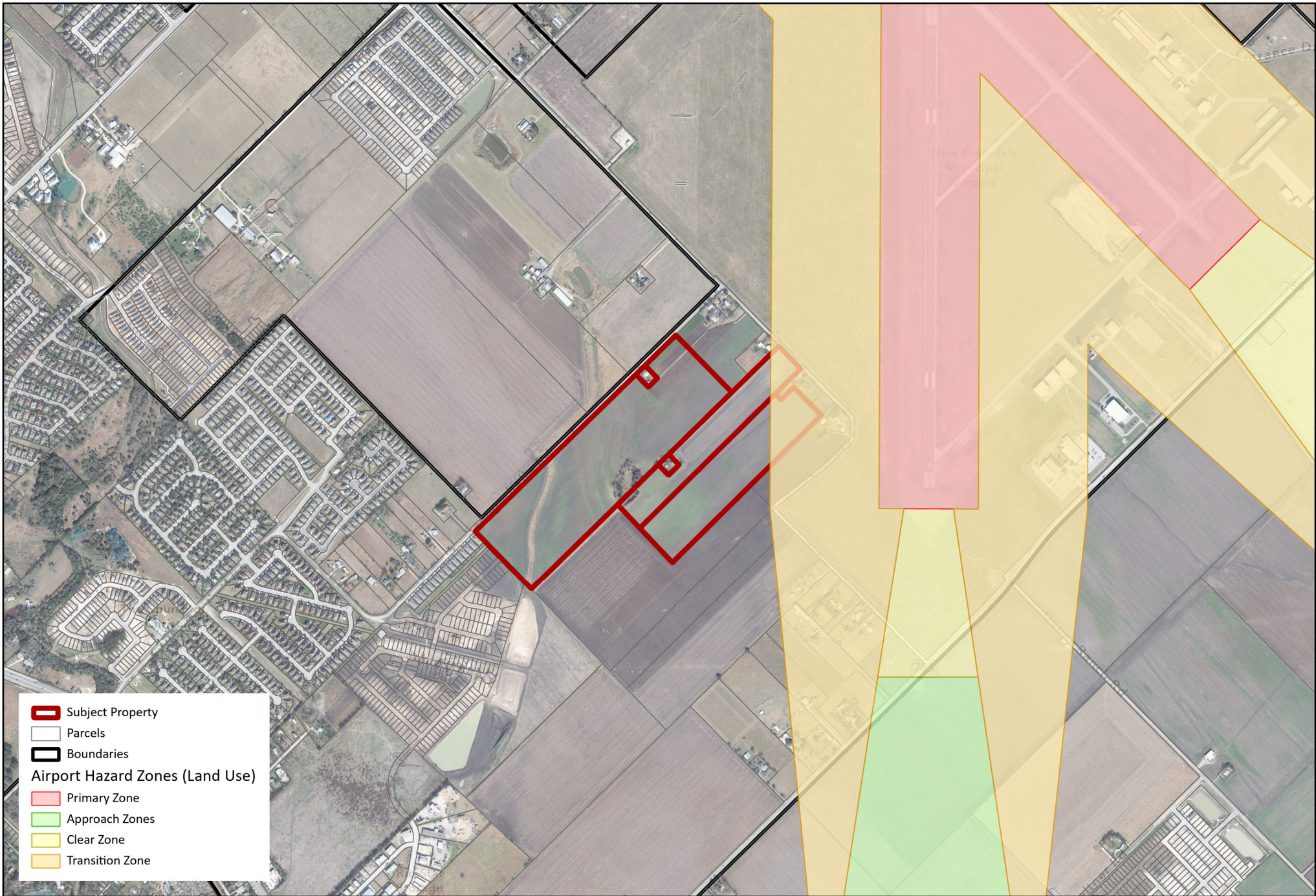
PZ23-0352
APD AH to R-3L AH & R-3H AH

0 510 1,020
Feet

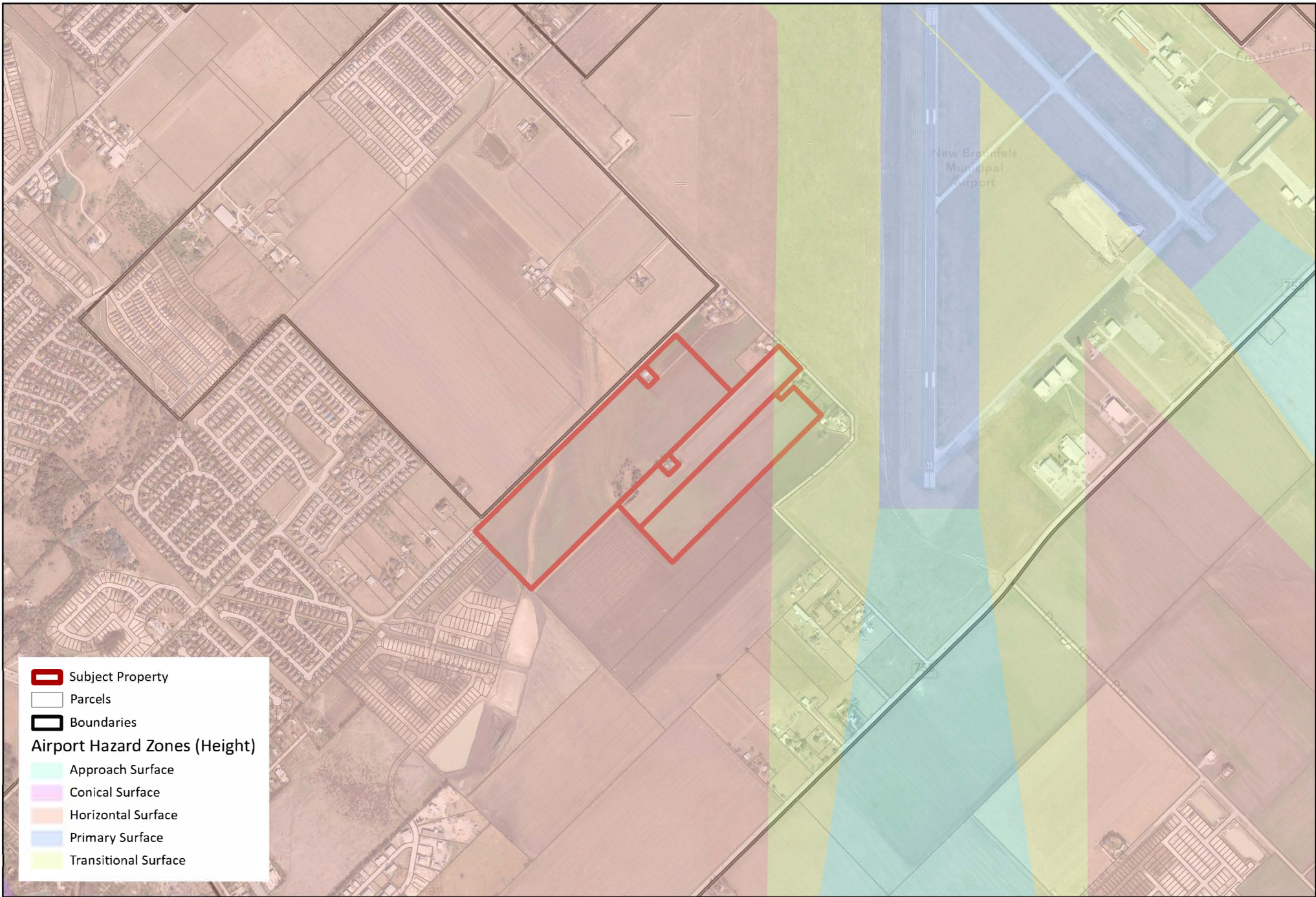


Source: City of New Braunfels Planning Date:
10/16/2023

DISCLAIMER: This map and information contained in it were developed exclusively for use by the City of New Braunfels. Any use or reliance on this map by anyone else is at that party's risk and without liability to the City of New Braunfels, its officials or employees for any discrepancies, errors, or variances which may exist.



PZ23-0352 Airport Hazard Overlay Exhibit (Land Use)



PZ23-0352

Airport Hazard Overlay Exhibit (Height)



- Action Items not supported by the requested use include:**

- **Action 1.8:** Concentrate future investment in industrial and employment centers near existing and emerging hubs, such as the airport; and along existing high-capacity transportation networks, such as Interstate Highway 35.
- **Action 6.2:** Protect the airport from incompatible land use encroachment.
- **Action 2.1:** Sustain community livability for all ages and economic backgrounds.