

All-Ability Park Amenities

A 2019 BOND PROJECT



PARKS AND RECREATION DEPARTMENT



The 7 Principles of Inclusive Playground Design

Best practices for creating meaningful
play environments for people of all
ages and abilities.

Developed in partnership with:

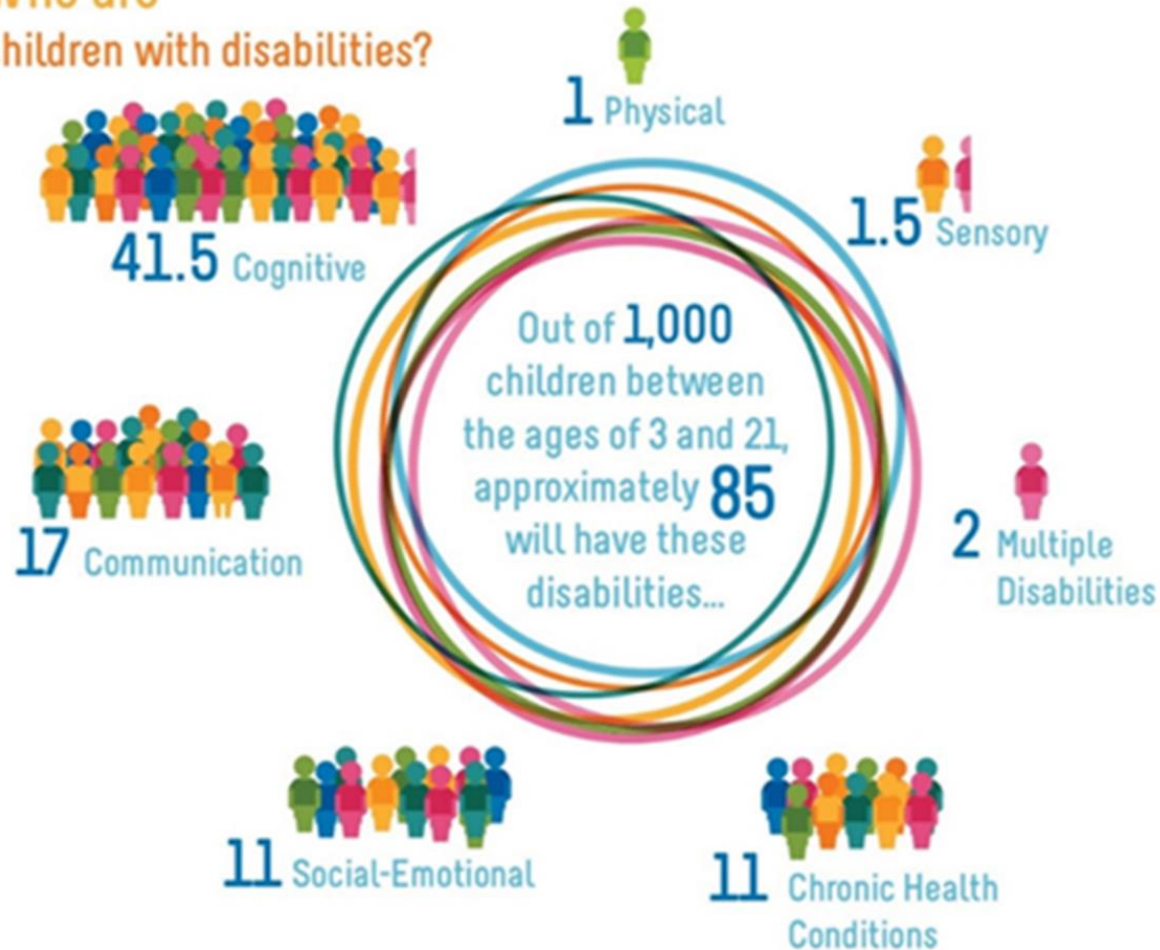


UtahStateUniversity
CENTER FOR PERSONS WITH DISABILITIES

PLAYCORE[™]

Building communities through play.

Who are
children with disabilities?

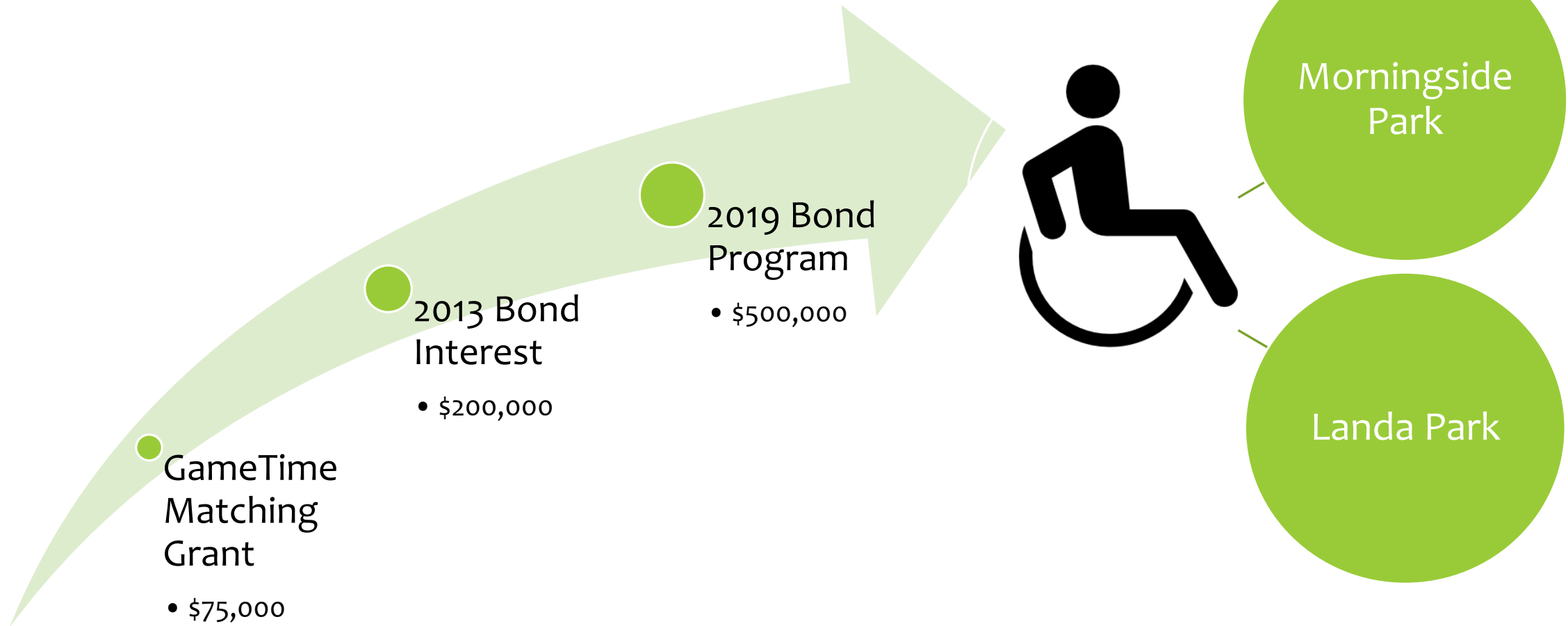


Getting the Most Play for All- Abilities

Getting More Play for More Kids

- Adding new play equipment and amenities will make parks more inclusive, but will require improved access such as walkways, enhanced fall surfacing, and adding shade
 - Using feedback from Callen's Castle public outreach process
 - Using 7 Principles of Inclusive Playground Design
- These play elements will be a substantial portion of the \$500,000 budget
 - Identified Capital Funds savings to supplement project for infrastructure needs such as sidewalks, parking spaces, surfacing, etc.
- GameTime Playground grant recipient toward playground structure
 - 1:1 match grant with minimum \$60,000 equipment purchase
 - Will be used for play structure at Morningside Park
- Staff recommends:
 - Target funding at Morningside Park & Landa Park
 - Utilize GameTime grant at Morningside
 - Seek alternative sources of funding for non-equipment needs

Budget Breakout

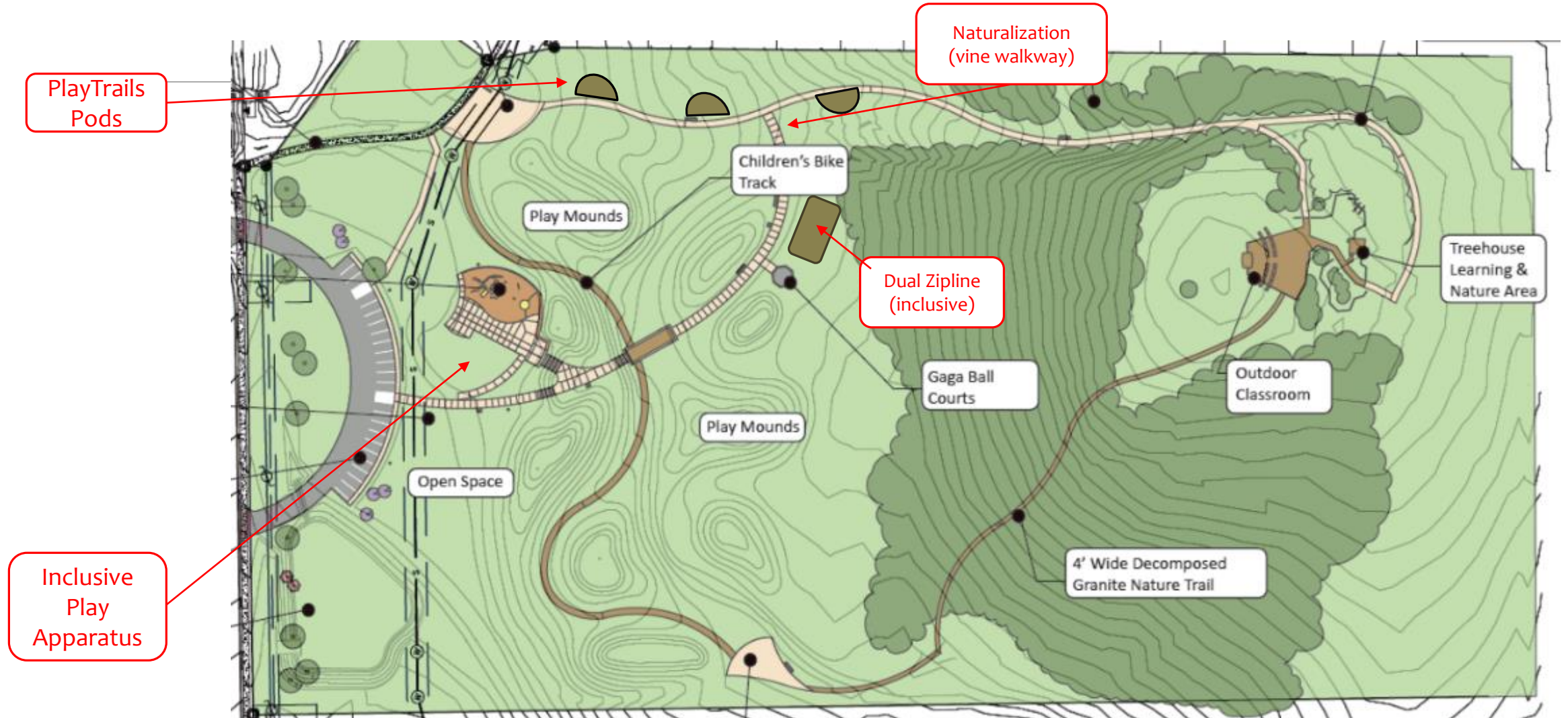




Morningside Park

- New play space with inclusive elements
 - Sensory elements – tactile, visual and audio
 - GT sensors/adaptive switch connection
 - Slide transfer station
 - Roller slide
 - 40' wide ramps at grade
- Merry-Go-All (high backs)
- Sensory Wave Spinning Seat
- New play pockets along trail and ADA route
 - Naturalization
 - Vegetated tunnels
 - Sensory relief
 - Gathering or observation spots
- Zipline with a Zero G Seat
- Poured-in-place surfacing
- Inclusive Swings i.e. “mommy and me” or Zero G seat

TRANSFORM Morningside!





Balancing



Spinning



Brachiating



Sliding



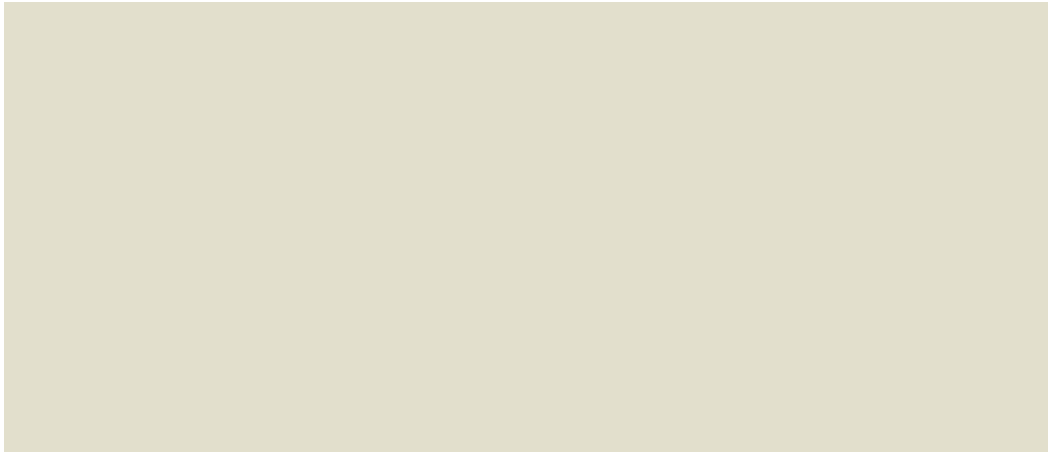
Climbing



Swinging



Sample play structure







Activated Pathways





Landa Park

- New musical play trail
 - 6' concrete pathway with connections to existing play pods and sidewalks
- Merry-Go-All (high backs)
- Inclusive Swings i.e. “mommy and me” or Zero G seat
 - Requires replacement of a bay of swings
- Naturalization and new landscaping



Existing
Playground Pods

Musical Trail Pod to
connect to existing
play areas



Google







Questions & Comments



PARKS AND RECREATION DEPARTMENT