



OVERHEAD SPEAKERS

The overhead music station and volume is set at ≤ 85 decibels (dB) by management and may not be adjusted by any other employees. Overhead music plays throughout the duration of our normal business hours.

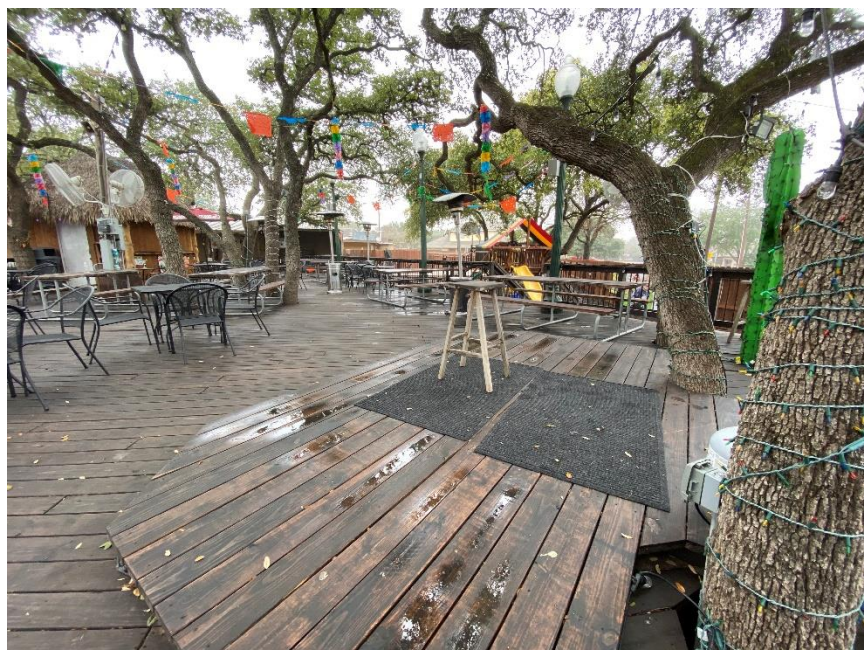
- Sunday – Thursday from 9:00AM – 9:00PM
- Friday – Saturday from 9:00AM – 10:30PM





LIVE MUSIC STAGE

BAND VIEW – faces towards the restaurant





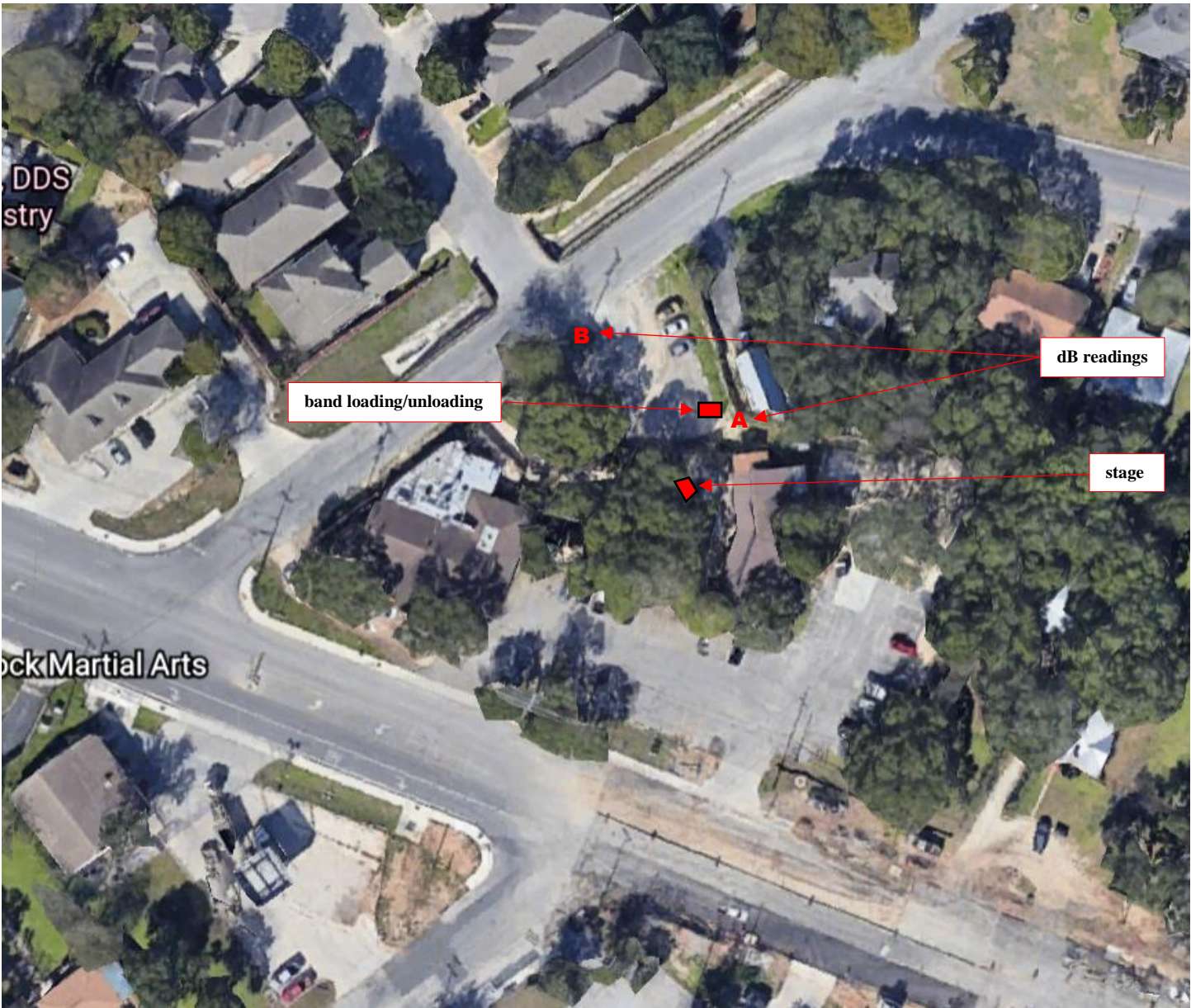
LIVE MUSIC STAGE

AUDIENCE VIEW





AERIEL VIEW





LIVE MUSIC

Live music operates within our normal business hours. Sessions are typically booked during these hours:

- Thursday & Sunday 6:00PM – 9:00PM
- Friday & Saturday 7:00PM – 10:00PM

The bands sound level will be monitored and measure on the Live Music Decibel Log (reference form below).



LIVE MUSIC DECIBEL LOG

Band Name:	
Date:	
Time:	

Instructions: The Manager must measure the sound level of the music using a sound level meter at the start of the band’s performance and at 1-hour intervals upon the initial measure. Measurements must be taken at the two identified points (A & B) along the property line as indicated on the chart. If the sound level exceeds 85 decibels (dB), the band will immediately be notified and given a first and final warning. The Manager must remeasure the dB level within 5 minutes of the warning to confirm compliance. If the dB level exceeds the max level a second time, the band will immediately be suspended.

Time	dB Level		Manager Initial
	A	B	



Acknowledgement: I understand that the band’s performance must be suspended if the sound level exceeds 85 dB after the first and final warning. Further, I understand that a band that does not abide by the City of New Braunfels noise regulations will not be allowed to perform at Herbert’s.

Herbert’s Manager:	
Band Representative:	