

Traffic Study Summary

Date: March 11, 2021
Prepared By: Carly Farmer, E.I.T., Engineer
Request: Lower existing 30 mph speed limit on River Acres Drive
Recommendation: Retain existing 30 mph speed limit on River Acres Drive

Background

The statutory maximum speed limit in the City of New Braunfels is 30 miles per hour (mph) except where otherwise established by ordinance and posted by official traffic signs. River Acres Drive is a residential street located between SL 337 and Fair Lane. It is two-way stop controlled at each end and has a posted speed limit of 30 mph. The portion of River Acres Drive from 1255 River Acres Drive to Fair Lane is a residential area with homes fronting both sides. There are existing sections of rumble strips in the residential area. The remainder of River Acres Drive up to SL 337 is a commercial area. The only existing sidewalk is in the commercial area at 1268 River Acres Drive.

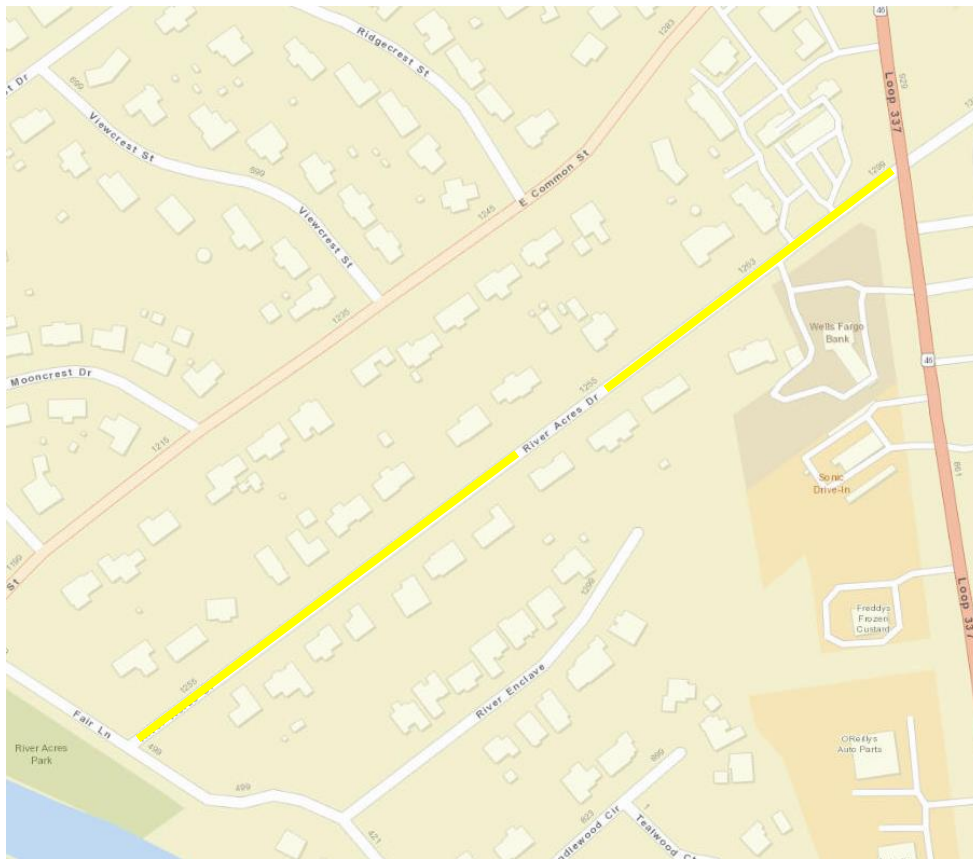


Figure 1. River Acres Drive South of SL 337

An engineering study was completed to evaluate lowering the existing 30 mph to 25 mph on River Acres Drive. The study was completed at the request of residents due to speeding and safety concerns pertaining to children playing outside.

Guidance

Speed limits applicable to public streets are established:

- Statutorily- a maximum speed limit applicable to a particular class of road that is established by State law; or
- As altered speed zones - based on engineering studies.

The maximum speed limits posted should be based primarily on the 85th percentile speed - the speed at or below which 85 percent of vehicles travel. Other factors that may be considered when establishing or reevaluating speed limits include the following:

- Road characteristics
- Roadside development and environment
- Parking practices and pedestrian activity
- Reported crash experience

A city may declare a lower speed limit of not less than 25 miles per hour if the governing body determines that the prima facie speed limit on the streets is unreasonable or unsafe. By State Law, a traffic engineering study is required in order for a city to lower a speed limit below 25 mph.

Site Investigation

A traffic study was completed for River Acres Drive in February 2021 due to concerns with safety and speeding.

Crash History

Traffic crash data for 2018 through February 2021 was found through TxDOT's Crash Records Information System. There were no reported crashes on River Acres Drive during this time.

Data Collection

Traffic speed and volume data were collected on February 10, 2021 for River Acres Drive. The average daily traffic (ADT) on River Acres Drive is 347 vehicles per day (vpd) and the 85th percentile speed is 33 mph.

Recommendation

Based on the site investigation and collected speed data, it is recommended that the regulatory speed on River Acres Drive be maintained at 30 mph at this time. Posting signs with a lower speed limit would likely not affect driver behavior.