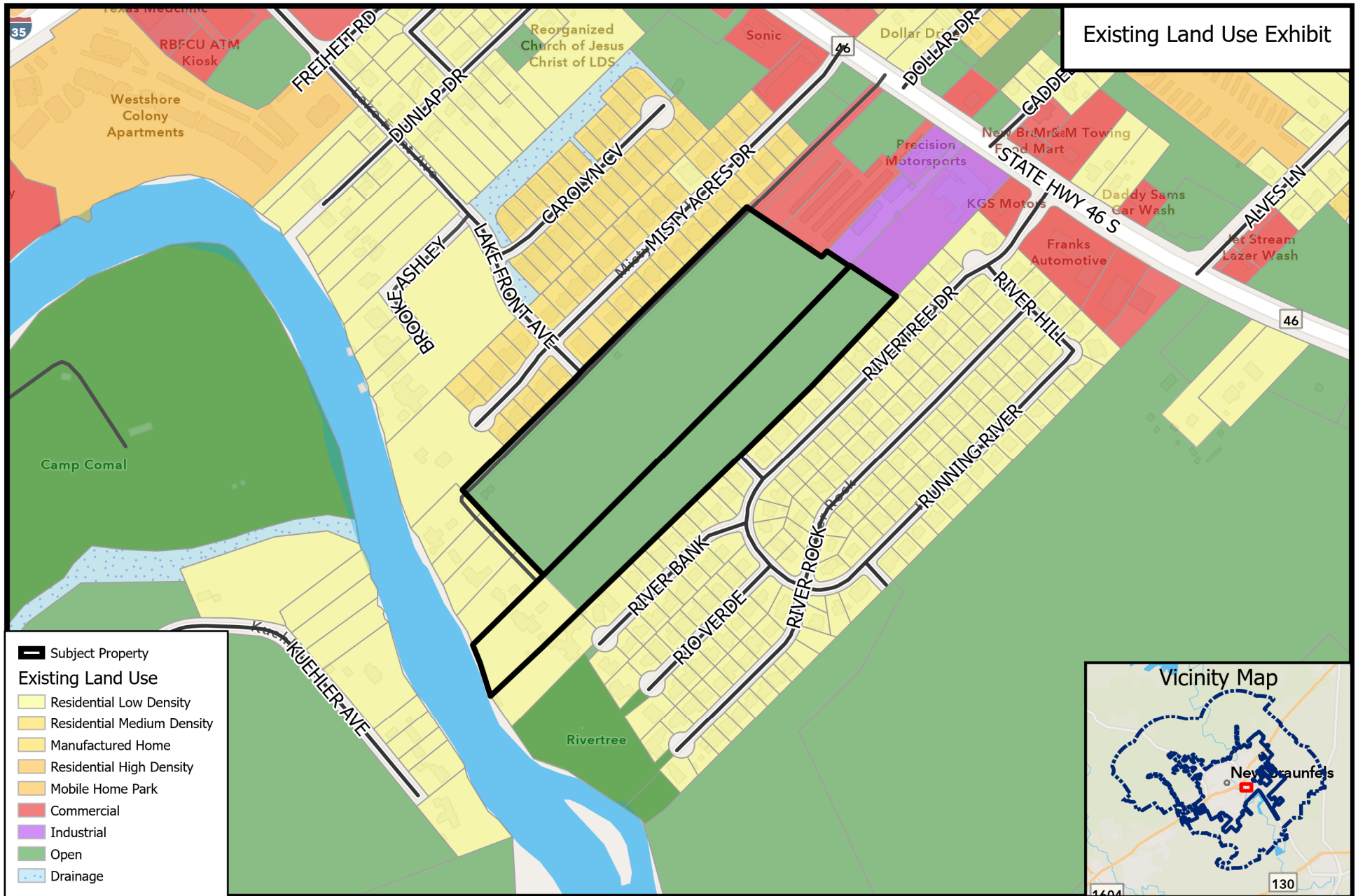


PZ21-0313
M-1 to ZH-A



Source: City of New Braunfels Planning
 Date: 9/17/2021

DISCLAIMER: This map and information contained in it were developed exclusively for use by the City of New Braunfels. Any use or reliance on this map by anyone else is at that party's risk and without liability to the City of New Braunfels, its officials or employees for any discrepancies, errors, or variances which may exist.





Map of the San Antonio area showing the distribution of 1000+ streetlights. The map is color-coded by streetlight type: green for LED, orange for high-pressure sodium, purple for low-pressure sodium, and blue for incandescent. The map also shows major roads, highways, and the city limits. A scale bar and north arrow are included in the bottom left corner.

- **Action 1.3:** Encourage balanced and fiscally responsible land use patterns.
- **Action 3.13:** Cultivate an environment where a healthy mix of different housing products at a range of sizes, affordability, densities, amenities and price points can be provided across the community as well as within individual developments.

